

Product datasheet for **RG212415**

DUX3 (NM_012148) Human Tagged ORF Clone

Product data:

Product Type: Expression Plasmids
Product Name: DUX3 (NM_012148) Human Tagged ORF Clone
Tag: TurboGFP
Symbol: DUX3
Synonyms: double homeobox, 3
Mammalian Cell Selection: Neomycin
Vector: pCMV6-AC-GFP (PS100010)
E. coli Selection: Ampicillin (100 ug/mL)
ORF Nucleotide Sequence: >RG212415 representing NM_012148
 Red=Cloning site Blue=ORF Green=Tags(s)

TTTTGTAACTACGACTCACTATAGGGCGGCCGGAATTCGTCGACTGGATCCGGTACCGAGGAGATCTGCC
 GCC**CGATCGCC**

ATGCCGGCTGAGGTGCACGGGAGCCCGCCGCTCTCTCTGCCCGTGTCCGTCCGTGAAATTCGGCCGG
 GGCTCCCTGCGATGGCCCTCCTGACAGCTTTGGACGACACCTCCCCGAGGAAGCCAGGGACCGGAAG
 GCGAATGATACTCTTTGACCCCGAGTCAAAGCGATGCCCTGCGAGCCTGCTTTGAGCGGAACCTGTAC
 CCGGGCATTGCCACCAAAGAAGAGCTGGCCAGGGCATCGACATTCGGAGCCAGGGTCCAGATTTGGT
 TTCAGAATGAGAGATCATGCCAGTTGAGGCAGCACCGGCGCAATCTCGGCCCTGGCCCGGAGACGCGA
 CCCGCAAAAAGGAGACGAAAGCGGACTGCCATCACCGGATCCCAAAACCGCCCTGCTCTCCGAGCCTTT
 GAGAAGGATCGCTTTCCAGGCATTCTGCCAGGGAAGAGCTGGCCAGAGAGACGGCCTCCCGAGTCCA
 GGATTCAGCTCTGGTTTCAGAATCGAAGAGCCAGGCACTGGGACAGTCTGGCAGGGCGCCACGAGGC
 AAGCATCCGGTGAATGCAGCCCAATTGGG

A**CGCGT**ACGCGGCGCTCGAG - GFP Tag - GTTTAA

Protein Sequence: >RG212415 representing NM_012148
 Red=Cloning site Green=Tags(s)

MPAEVHGSPPASLCPSPVKFRPGLPAMALLTALDDTLPEEAQGPGRMILLSTPSQSDALRACFERNL
 YPGIATKEQLAQGIDIPERVQIWFQNERSCQLRQHRQSRPWGRRDPQKGRKRRTAITGSQTALLLRAF
 EKDRFPGIPAREELARETGLPESRIQLWFQNRARHWGQSGRAPTQASIRCNAAPIG

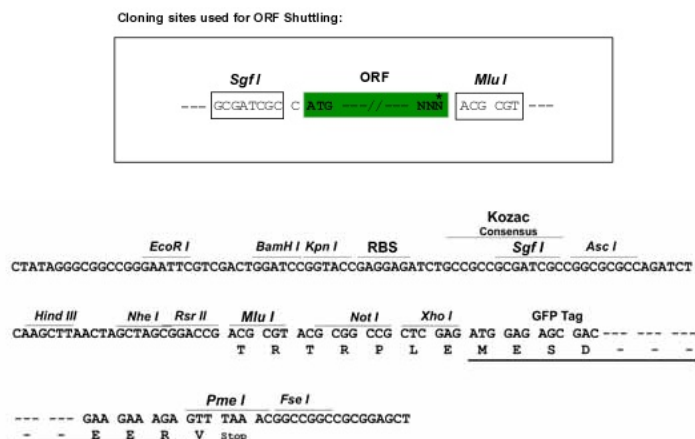
T**R**T**R**P**L**E - GFP Tag - V

Restriction Sites: SgfI-MluI



View online »

Cloning Scheme:



ACCN: NM 012148

ORF Size: 591 bp

OTI Disclaimer: The molecular sequence of this clone aligns with the gene accession number as a point of reference only. However, individual transcript sequences of the same gene can differ through naturally occurring variations (e.g. polymorphisms), each with its own valid existence. This clone is substantially in agreement with the reference, but a complete review of all prevailing variants is recommended prior to use. [More info](#)

OTI Annotation: This clone was engineered to express the complete ORF with an expression tag. Expression varies depending on the nature of the gene.

Components: The ORF clone is ion-exchange column purified and shipped in a 2D barcoded Matrix tube containing 10ug of transfection-ready, dried plasmid DNA (reconstitute with 100 ul of water).

Reconstitution Method:

1. Centrifuge at 5,000xg for 5min.
2. Carefully open the tube and add 100ul of sterile water to dissolve the DNA.
3. Close the tube and incubate for 10 minutes at room temperature.
4. Briefly vortex the tube and then do a quick spin (less than 5000xg) to concentrate the liquid at the bottom.
5. Store the suspended plasmid at -20°C. The DNA is stable for at least one year from date of shipping when stored at -20°C.

RefSeq: NM_012148.2, NP_036280.2

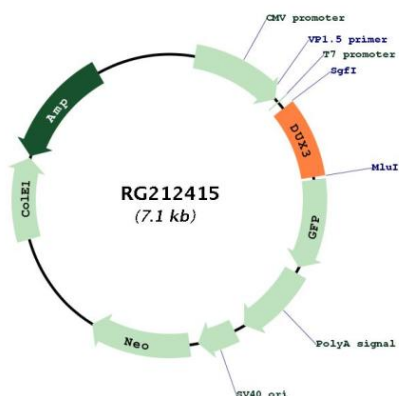
RefSeq Size: 594 bp

RefSeq ORF: 594 bp

Locus ID: 26582

Gene Summary:

The human genome contains hundreds of repeats of the 3.3-kb family in regions associated with heterochromatin. The DUX gene family, including DUX3, resides within these 3.3-kb repeated elements (Beckers et al., 2001 [PubMed 11245978]). See DUX4 (MIM 606009). [supplied by OMIM, Mar 2008]

Product images:


Circular map for RG212415