

Product datasheet for **RG212364**

WNK2 (NM_006648) Human Tagged ORF Clone

Product data:

Product Type: Expression Plasmids
Product Name: WNK2 (NM_006648) Human Tagged ORF Clone
Tag: TurboGFP
Symbol: WNK2
Synonyms: NY-CO-43; P/OKcl.13; PRKWNK2; SDCCAG43
Mammalian Cell Selection: Neomycin
Vector: pCMV6-AC-GFP (PS100010)
E. coli Selection: Ampicillin (100 ug/mL)
ORF Nucleotide Sequence: >RG212364 representing NM_006648
Red=Cloning site Blue=ORF Green=Tags(s)

TTTTGTAATACGACTCACTATAGGGCGGCCGGAATTCGTCGACTGGATCCGGTACCGAGGAGATCTGCC
 GCCCGGATCGCC

ATGGACGGCGATGGCGGCCGCCGAGACGTCCCCGGCACGCTGATGGAGCCCAGGGCGGGCGGGGCCCCG
 CGGGCATGGCGGAGCCTCGGGCGAAGGCGGCGCGCCGGGCCCCAGCGCTTCTGCGGCGCAGCGTGGT
 AGAGTCGGACAGGAGGAGCCCGGGCTTGGAGGCGAGCCGAGGCGCGGGCCCCGAGCCCCGAGCCC
 CTGACGCGCCGGGTGCTTCTGCTCTGCAAGACGCGCCGCTCATCGCGGAGCGCGCCCGGACGCCCCG
 CCGCCCCGCGCCGAGCGCTGGTAGCGAGCCGGGAGCCCCCGAGCCCCGCGGACGCCGGCCCCGA
 GCCCGTGGGCACGAGGAGCCCGGCCCGGACCCCATCGCAGCCGCTGTCGAAACCGCGCCTGCCCCGAC
 GCGCGCCCCAGGGAGGAGCGGGCGGCGACCGTGAGGAAGGAGGATGAGGGGGCGGCCGAGGCGAAGCCTG
 AGCCCCGGGCGCACTCGCCGGGACGAGCCGAAGAGGAGGAGGACGACGAGGACGACCTCAAGGCCGTGGC
 CACCTCTCTGGACGGCCGCTTCTCAAGTTCGACATCGAGCTGGGCCCGGTTCTTCAAGACGGTCTAC
 AAGGGCTGGACACGGAGACCTGGGTGGAGGTGGCCTGGTGTGAGCTGCAGGACCGGAAGCTCACCAAGC
 TTAGACTTCTGGGAGTCCAGCGCAAGGGCAAGCGGTGATTGTGCTGGTGACGGAGCTGATGACCTCA
 GGGACGCTGAAGACATACCTGAAGCGTTCAGGTGATGAAGCCCAAGGTTCTCCGAGCTGGTGCCGGC
 AGATCCTGAAGGCCTGCTGTTCTGCACACAAGGACGCCACCCATCATCCACCGAGACCTGAAATGTGA
 CAATATTTTCATCACCGACCAACTGGTCTGTGAAGATTGGCGACTTGGCCTGGCCACTCTGAAAAGA
 GCGTCAATTTGCCAAAAGTGTGATAGGTAATCCCGAGTTTCATGGCGCCGAGATGTACGAGGAGCACTACG
 ATGAGTCCGTGGACGCTATGCCTTTGGGATGTGCATGCTGGAGATGGCCACCTCGGAGTACCCCTACTC
 GGAGTGCCAGAATGCGGCCAGATCTACCAGGTCACCTGTGGTATCAAGCCGGCCAGCTTTGAGAAA
 GTGCACGATCCTGAAATCAAGGAGATTATTGGGAGTGTATCTGCAAAAACAAGGAGGAAAGGTACGAGA
 TCAAAGACCTGCTGAGCCAGCCTTCTTCGAGAGGACACAGGCGTGAGGGTGGAGCTCGCGGAGGAGGA
 CCACGGCAGGAAGTCCACCATCGCCCTGAGGCTCTGGGTGGAAGACCCCAAGAACTGAAGGAAAGCCC



AAGGACAATGGAGCCATAGAGTTCACCTTCGACCTGGAGAAGGAGACGCCGGATGAGGTGGCCCAAGAGA
 TGATTGAGTCTGGATTCTTCCACGAGAGTGACGTCAAGATCGTGGCCAAGTCCATCCGTGACCGCGTGGC
 CTTGATCCAGTGGCGGCGGGAGAGGATCTGGCCCGCGCTGCAGCCCAAGGAGCAGCAGGATGTGGGCAGC
 CCGGACAAGGCCAGGGGTCCGCCGGTGCCCTGCAGGTCCAGGTGACCTACCATGCACAGGCTGGGCAGC
 CCGGGCCACCAGAGCCGAGGAGCCGGAGGCCGACCAGCACCTCCTGCCACCTACGTTGCCGACCAGCGC
 CACCTCCCTGGCTCGGACAGCACCTTCGACAGCGGCCAGGGCTCTACCGTGTACTCAGACTCGCAGAGC
 AGCCAGCAGAGCGTGATGCTTGGCTCCCTTGGCAGCGCAGCCGCTCCCGGCCACGTTGTGTGCAGCC
 CCCTGTGAGCGAGGGGCCGCTCCTGCCGAGAGCCTGCCCTCGTGGGGCCCTACCAGCAGCCACGGC
 TGCACCTGGCTTCCCGGTGGGCTCTGTCCCGGCCCGCCTGCCCTCCGTCCCTCCAGCAGCACTTCCCG
 GATCCGGCCATGAGCTTCGCCCCCGTGCTGCCCGCCAGCACCCTCATGCCACGGGCCAGGCCAGC
 CAGCACCCCGGCCAGCAGCCTCCTCCGTGGCCAGCCGACACCCTGCCGAGGTCTGGCCCCACA
 GCCCGTGGTCCCCTCCAGCCGTTCCCCCCACCTGCCACCGTACCTGGCTCCAGCTCCAGGTGGGG
 GCCCCCGCTCAGCTGAAGCCCTCCAGATGCCACAGGCCCCCTGCAGCCGTTGCTCAAGTCCCTCCG
 AGATGCCCCCGATTCTGTGTGCCCCCATCACGCCCTGGCGGAATCGACGGCTCCCTCCGGCCCT
 CCCAGACTGCCAGCCGACTGTGCTCCCGTCCACCACTCAGTATTCTCTCCAGCCGTGATCTTG
 CCGAGCCTCGCTGCCCACTCCCCCTGCGTCCCAGCCTTGCCTCTGCAGGCTGTGAAGCTGCCCCACC
 CCCTGGGGCGCCCTGGCCATGCCCTGCCGGACATTGTGCCAAATGCACCGGCCACTATCCCCTGT
 GGCCGTAGCCCCACCGGGCGTGGCTGCCCTGTCCATTCTTCCCGTGGCCAGCTCCCAGGCCAACCT
 GTGTACCAGCGGCCCTCCACAGATGGCGCCTACTGACGTCCCTCCTTCCCCCATCACACGGTGCAGA
 ATATGAGGGCCACCCCTCCACAGCCGCACTGCCTCCACAACCCACACTGCCCCACAACCCGTGTGCC
 CCCGCAACCCAGCTGCCCTCAACCTGTGTGGCCCGCAACCCACAGGCCCCCTCAACCTGTGCTG
 CCCCCGAACCCATGCTGCCCCACAACCTGTGCTGCCCCGACCCGGCACTGCCTGTGCGCCCTGAGC
 CCCTCAGCCCCACCTTCTGAACAAGCTGCTCCAGCTGTACACCAGGGAGCCAGATTTGCTTGGCCA
 CCAGCTCCCTATGCTGTGGACGTCCCGCTCAGGTCCCACCGTGCCTGTGCCACCGGCTGCGGTCTC
 TCGCCGCTCTGCCGGAAGTGTGCTGCTGCCGCCCTGAGCTCCTGCCTCAGTTCCCCAGCTCCCTGG
 CCACGGTGTGCTCTGTGCAGAGTGTGCCACCCAGACTGCCACACTTCTGCCACCAGCAAACCCACC
 GCTGCCTGGCGGGCCGGATCGCCAGCCCTGCCCAACTGTCCAGTGCAGGTGGAACAGTCCAAGAG
 GAGCAGGCTCACAGGACAAGCCCGCCGCTCCCGCAGAGCTGTGAGAGCTATGGAGTTCTGATGTCA
 CTTCTGAAAAGAGCTGAGTGACAGCTGTGAAGGCGCTTGGAGGGGGCAGGCTGGAGGGCAGGGCAGC
 CCGAAAACACCACCGAGTCCACGCTGCGCGCTCCCGCAGGAGAGGGCCAGCCGCCCGGCTTACC
 ATCTTGAACGTGTCAACACTGGGGACAAGATGGTGGAGTGCCAGCTGGAGACGACAACCAAGATGG
 TGACCTTCAAGTTCGACTTGGACGGGACGCACCCGATGAAATTGCCACGTATATGGTGGAGCATGACTT
 TATCTGCAGGCCGAGCGGGAACGTTTATCGAGCAGATGAAGGATGTCATGGACAAGGCAGAGGACATG
 CTCAGCGAGGACACAGACGCCGACCGTGGCTCCGACCCAGGGACCCAGCCGCCACACCTCAGCACCTGCG
 GCCTGGGACCCGGGAGGAGAGCCGACAATCCCAAGCCAACGCCCCCGTGTATCAGCAGAAGCTCTGCA
 CACCGGGAAGAGTGGTTCATCATCTGTCCGGTGGCTGAGCACCCCGCCCGAGGCCCTGAATCTTCCG
 CCCCCACTTCTAAGTCCCTGCCGCCAGAAGCCAGCAAGATTACGCGCCCTATAAAGACCAGCTGT
 CCTGGAAGGAACAACCCAGCTTTCTAGCCAGTCAGCAGCTCCTGAGCCAGGCGGGCCAGCAACCTCC
 TGGGGCACCCAGCCCTTGGCCCTCCTCCCTCCTGTGACTGCTTGCCTCAAGATGGAGCAGCT
 CCAGCCACCAGCACCATGCCAGAGCCAGCGTCAGGAAGTCCAGCCAGGCAAGGGGTCCAGGGACACCTC
 AGGGGCTGACCAGTGAGCTCGAGACGTCTCAGCCACTAGCGGAGACTCACGAGGCCCGCTTGTGTGCA
 GCCCTCGTGGTGGGCTAGCACCTTGCCTCCAGCTCCAGAGGCTGCCTCAACCAGGGACGCCAGTGC
 CCAAGGGAGCCCTGCCACCTCTGCACCTGAGCCAGCCCCACAGCGGGACCCACAGCCCGCTTGG
 GTCAACCTGTCCCCTGCTTCTGCCGAGTGGGGCCGTGAGCTGGCCACCTCCAGCTCCCAAGCCC
 ACCCTGGGGCCACCGTCCCCCACAGCCACCTCGGCCCTGGAGTGGATGGGAAGGGCCGCCCC
 AGGGTGGGCTTTGTGGACAGCACCATCAAGAGCCTGGACGAGAAGCTGCGGACTCTGCTTACCAGGAGC
 ACGTGGCCACCTCCTCAGCTCAGCTGGGACCCCTGTGGAGTGGGCGACAGAGACTTACCCTGGAGCC
 CCTGAGAGGGGACAGCCCGCTCAGAGGTCTGCGGGGGGACCTGGCCCTGCCCCAGTGCCTAAGGAG
 GCGGTCTCAGGGCGTGTCCAGCTGCCCCAGCCCTTGGTGGAGAAGTCAGAACTGGCCCCACTCGAGGGG
 CCGTGTGAGCAGGGCACGTCCTCGTCAATGACAGCAGAGTCTCTCCAGGAGTATGCTAGGCTATGA
 CAGAGATGGAAGGCAGGTGGCTCAGACTCCCATGTGGTCCCCAGCGTCCCCAGGATGTACCTGCTTTT
 GTGAGACTGCACGTGTGGAGCCACAGACAGGGATGGTGGAGAAGTGGAGAAGCTCGGCAGAGCCCC

CGCCGAGTGACATGGGCACAGTGGGGGGCCAGGCTAGCCACCCCCAGACTCGGCGCTCGAGCTTTGGG
GTCCCCTCGGAAACGTCCAGAGCAGCAGGATGTCAGCTCACCAGCCAAGACTGTGGGCCGTTTCTCGGTG
GTCAGCACTCAGGACGAGTGGACCCTGGCCTCCCCCAGCCTGAGATACTCTGCCCCACCCGACGTCT
ACCTGGACGAGGCCCTCCAGCCCCGACGTGAAGCTGGCAGTGGCGGGGCGCAGACGGCCTCCTCCAT
CGAGGTCGGCGTGGGCGAGCCCGTGTCCAGCGACTCTGGGACGAGGGCCCTCGGGCGAGACCCCGGTG
CAGAAGCAGGCGTCCCTGCCCGTGAAGTGGCAGCGTGGCTGGCGACTTCGTGAAGAAGGCCACCGCTTCC
TGCAGAGGCCTTCTCGGGCCGGCTCGCTGGGCCCGAGACCCAGCAGGGTGGGCATGAAGTCCCCAC
GATCAGCGTGACCTCCTTCCATTCCAGTCGTCTACATCAGCAGCGACAATGATTCGGAGCTCGAGGAT
GCTGACATAAAGAAGGAGCTGCAGAGTCTGCGGGAGAAGCACCTGAAGGAGATCTCGGAGCTGCAGAGCC
AGCAGAAGCAGGAGATCGAAGCTCTGTACCGCCGCTGGGCAAGCCACTGCCCCAACGTGGGCTTCTT
CCACACGGCACCCCCACTGGCCGCGGAGAAAAACCAGCAAGCAAGCTGAAGGCAGGCAAGCTGCTA
AATCCCCTGGTGCAGCTCAAGGTCGTGGCCTCCAGCACAGGTCACCTGGCTGACTCCAGCAGAGGCC
CTCCCGCTAAGGACCCTGCCAAGCCAGTGTGGGGCTCACTGCAGACAGCACGGGCTGAGCGGGAAGGC
AGTGCAGACCCAGCAGCCCTGCTCCGTCCGGCCCTCCCTGTCTTCGGACATCTGCTCCGGCTTAGCCAGT
GATGGAGGCGGAGCGCGTGGCCAAGGCTGGACGGTTTACCACCAACGTCTGAGAGAGTGACCTATAAGT
CTAGTAGCAAACCTCGTGCTCGATTCTCAGTGGACCCGTATCTGTGTCCATCTGGTCTGCCTGAAGCG
TCTCTGCCTAGGCAAAGAACACAGCAGTAGGTCCTCCACCAGCAGCCTGGCCCCAGGCCCTGAGCCAGGC
CCCCAGCCCGCCTGCACGTCCAGGCGCAGGTGAACAACAGCAACAAGAAGGGTACCTTACGGACG
ACCTGCACAAGCTGGTGGACGAGTGGACGAGCAAGACGGTGGGGCCGCGCAGCTGAAGCCCACGCTCAA
CCAGCTGAAGCAGACCCAGAAGCTGCAAGACATGGAGGCCAGGCAGGCTGGGCTGCCCCGGCGAGGCG
CGGGCTATGACCGCACCTCGAGCAGGAGTGGGGATGCCACGTCTGCCCCAGCGCCCGCCCTCTGTCCA
CCACGGTCATTCCCGGAGCCGCCCGACCCTGTCCGTGCCACACCAGATCCTGAGAGTGAGAAGCCTGA
C

AGCGGACCGACGCGTACGCGGCCGCTCGAG - GFP Tag - GTTTAA

Protein Sequence: >RG212364 representing NM_006648
 Red=Cloning site Green=Tags(s)

```

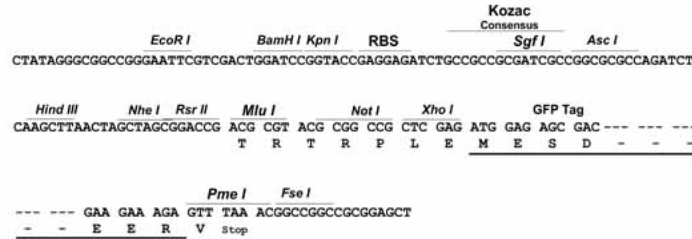
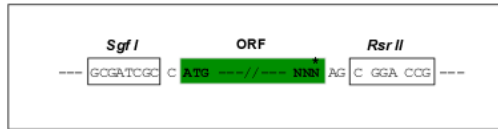
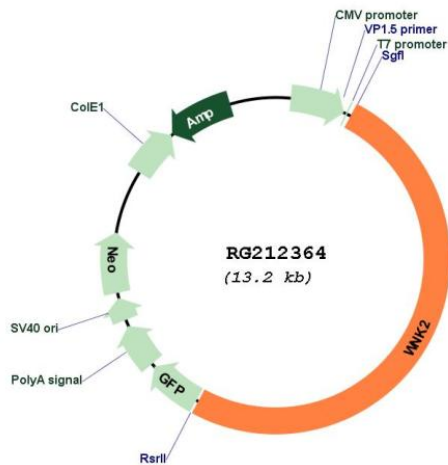
MDGDGRRDVPGLMEPGRGAGPAGMAEPRAKAARPGPQRFLRRSVVESDQEEPPGLEAAEAPGPQPQP
LQRRVLLLCKTRRLIAERARGRPAAPAPAALVAQPGAGPADAGPEPVGTQEPGPDPIAAAVETAPAPD
GGPREAAATVRKEDEGAAEAKPEPGRTRRDEPEEEEDDEDLKAVATSLDGRFLKFDIELGRGSFKTVY
KGLDTEWVEVAVCELDQRKLTCLRQRFKKEEAEMLKGLQHPNIVRFYDFWESSAKGKRCIVLVTLMTS
GTLKTYLKRKFKVMKPKVLRSWCRQILKGLLFLHTRTPPIIHRDLKCDNIFITGPTGSVKIGDLGLATLKR
ASFASVIGTPEFMAPEMYEEHYDESVDVYAFGMCMELEMATSEYPYSECQNAAQIYRKVTCGKIPASFEK
VHDPEIKEIIGECICKNKEERYEIKDLLSHAFFAEDTGVVVELAEEDHGRKSTIALRLWVEDPKKLGKPK
KDNGAIEFTFDLEKETPDEVAQEMIESGFFHESDVKIVAKSIRDVALIQWRRERIWPALQPKEQQDVGVS
PDKARGPPVPLQVQVYHAQAGQGPPEPEPEADQHLLPPTLPTSATSLASDSTFDSSGQSTVYSDSQS
SQQSVMLGSLADAAPSPAQCVCSPVSEGPVLPQSLPSLGAYQQPTAAPGLPVGSVPAPACPPSLQQHFP
DPAMSFAPVLPSTPMTGPGQPAPPGQQPPPLAQPTPLPQVLAQPVVPLQPVPHLPPYLAPASQVGV
APAQLKPLQMPQAPLQPLAQVPPQMPPIPVVPPITPLAGIDGLPPALPDLPTATVPPVPPQYFSPAAIL
PSLAAPLPPASPALPLQAVKLPHPPGAPLAMP CRTIVPNPATIPLLAVAPPGVAALSIHSAVAQLPGQP
VYPAAFPQMAPTDVPPSPHHTVQNM RATPPQPALPPQPTLPPQPVLPPQPTLPPQPVLPPQPTRPPQV
PPQMLPPQPVLPPQPALPVRPEPLQPHLPEQAAPAAATPGSQILLGHPAPYAVDVAQVPTVPVPPAAVL
SPPLPEVLLPAPELLPQFPSSLATVSASVQSVPTQTATLLPPANPLLPGGPGIASPCPTVQLTVEPVQE
EQASQDKPPGLPQSCESYGGSDVTS GKELSDSCEGAFGGGRLEGRAARKHHRSTRARSRQERASRPLT
ILNVCNTGDKMVEQCLETHNHKMTFKFDLDGDAPDEIATYMEVHDFILQAERETFEIQMKDVMKAEDM
LSEDTDADRGSDPGTSPPHLSTCGLGTGEESRQSQANAPVYQNVLHTGKRWFIIICPVAEHPAPEAPES
PPLPLSSLPEASQDSAPYKQDQLSSKEQPSFLASQQLLSQAGPSNPPGAPPAPLAPSSPPVTALPQDGAA
PATSTMPPEPASGTASQAGGPGTPQGLTSELETSQPLAETHEAPLAVQPLVVG LAPCTPAEAASTRDASA
PREPLPPAPEPSPHSGTPQPALGQPAPALLPAAVGAVSLATSQ LPSPLGPTVPPQPPSALESDGEGPPP
RVGFVDSTIKSLDEKRLTLLYQEHVPTSSASAGTPVEVGD RDTLEPLRGDQPRSEVCGDLALPPVPKE
AVSGRVQLPQPLVEKSELAPTRGAVMEQGTSSSMTAESSPRSM LGYDRDGRQVSDSHVVPSVPQDVPAF
VRPARVEPTDRDGEAGESSAEPSPDMGTGGQASHPQTLGARALGSPRKRPEQQDVSSPAKTVGRFSV
VSTQDEWTLASPHSLRYSAPPDVYLDEAPSSPDVKLAVRRAQTASSIEVGVGEPVSSDSGDEGPRARPPV
QKQASLPVSGSVAGDFVKKATAFLQRPSRAGSLGPETPSRVGMKVPTISVTSFHSQSSYISSDNDELED
ADIKKELQSLREKHLKEISELQSQQKQIEALYRRLGKPLPPNVGFFHTAPPTGRRRKT SKSKLKAGKLL
NPLV RQLKVVASSTGHLADSSRGPPAKDPAQASVGLTADSTGLSGKAVQTQQPCSVRASLSSDICSGLAS
DGGGARGQGWTVYHPTSERV TYKSSSKPRARFLSGPVSVSIWSALKRCLGKEHSSRSSTSS LAPGPEPG
PQPALHVQAQVNNNSNKKGTFTDDLHKL VDEWTSKTVGAAQLKPTLNQLKQTQKLQDMEAQAAGWAAPGEA
RAMTAPRAGVGM PRLPPAPGPLSTTVIPGAAPTL SVPTDPPESEKPD
  
```

SGP TRRRLE - GFP Tag - V

Restriction Sites: SgfI-RsrII

Cloning Scheme:

Cloning sites used for ORF Shuttling:


Plasmid Map:

ACCN: NM_006648

ORF Size: 6651 bp

OTI Disclaimer: The molecular sequence of this clone aligns with the gene accession number as a point of reference only. However, individual transcript sequences of the same gene can differ through naturally occurring variations (e.g. polymorphisms), each with its own valid existence. This clone is substantially in agreement with the reference, but a complete review of all prevailing variants is recommended prior to use. [More info](#)
OTI Annotation: This clone was engineered to express the complete ORF with an expression tag. Expression varies depending on the nature of the gene.

Components: The ORF clone is ion-exchange column purified and shipped in a 2D barcoded Matrix tube containing 10ug of transfection-ready, dried plasmid DNA (reconstitute with 100 ul of water).

Reconstitution Method:

1. Centrifuge at 5,000xg for 5min.
2. Carefully open the tube and add 100ul of sterile water to dissolve the DNA.
3. Close the tube and incubate for 10 minutes at room temperature.
4. Briefly vortex the tube and then do a quick spin (less than 5000xg) to concentrate the liquid at the bottom.
5. Store the suspended plasmid at -20°C. The DNA is stable for at least one year from date of shipping when stored at -20°C.

RefSeq: [NM_006648.3](#), [NP_006639.3](#)

RefSeq Size: 6834 bp

RefSeq ORF: 6654 bp

Locus ID: 65268

Cytogenetics: 9q22.31

Protein Families: Druggable Genome, Protein Kinase

Gene Summary: The protein encoded by this gene is a cytoplasmic serine-threonine kinase that belongs to the protein kinase superfamily. The protein plays an important role in the regulation of electrolyte homeostasis, cell signaling survival, and proliferation. Alternative splicing results in multiple transcript variants. [provided by RefSeq, Sep 2013]