

Product datasheet for **RG212357**

FAM86A (EEF2KMT) (NM_201598) Human Tagged ORF Clone

Product data:

Product Type:	Expression Plasmids
Product Name:	FAM86A (EEF2KMT) (NM_201598) Human Tagged ORF Clone
Tag:	TurboGFP
Symbol:	EEF2KMT
Synonyms:	eEF2-KMT; EFM3; FAM86A; SB153
Mammalian Cell Selection:	Neomycin
Vector:	pCMV6-AC-GFP (PS100010)
E. coli Selection:	Ampicillin (100 ug/mL)
ORF Nucleotide Sequence:	>RG212357 representing NM_201598 Red=Cloning site Blue=ORF Green=Tags(s)

TTTTGTAATACGACTCACTATAGGGCGGCCGGAATTCGTCGACTGGATCCGGTACCGAGGAGATCTGCC
GCC**CGGATCGCC**

ATGGCGCCCGAGGAGAACCGGGGACCGAACTCTTGCTGCAGAGTTTCGAGCGCCGCTTCTGGCGGCAC
GCACACTGCGCTCCTTCCCCTGGCAGAGCTTAGAAGCAAAGTTAAGAGACTCATCAGATTCTGAGCTGCT
GCGGGATATTTTGCACAAGACTGTGAAGCATCCTGTGTGTGTGAAGCACCCGCCCTCCGTCAAATATGCC
CGGTGCTTTCTCTCAGAACTCATCAAAAAGCCCTCGGGAGGCTCGGTCACTCTCCGAGAGCACGGCCA
TCATCTCTACGGTACCACAGGCCTGGTCATGGGACCGCCCTCTACCTTGCAGAATGGCCATCGA
GAACCCGGCAGTCTTCACTAACAGGACTGTCCTAGAGCTTGGCAGTGGTCTGGCCTCACAGGCCTGGCC
ATCTGCAAGATGTGCCGCCCCGGGCATACATCTTCAGCGACTGTACAGCCGGGTCTTGGAGCAGTCC
GAGGGAATGTCCTTCTCAATGGCCTCTCATTAGAGGCAGACACTGCCAAGTTAGACAGCCCCAGGGT
GACAGTGGCCAGCTGGACTGGGACGTCGCGACGGTCCATCAGCTCTCTGCCTTCCAGCCAGATGTTGTC
ATTGCAGCAGATGTGCTGATTGCCCAGAAGCCATCATGTGCTGGTGGCGCTCTGCGGAGGCTGGCTG
CCTGCCGGGAGCACCAGCGGGCTCCTGAGGTCTACGTGGCCTTTACCGTCCGCAACCCAGAGACGTGCCA
GCTGTTACCACCGAGCTAGGCCGGCCGGGATCAGATGGGAAGTGAACCTCGTCATGAGCAGAAAATG
TTCCCTACGAAGAGCACTTGGAGATGGCAATGCTGAATCTCACCCCTG

ACGCGTACGCGGCCGCTCGAG - GFP Tag - GTTTAA



[View online »](#)

Protein Sequence: >RG212357 representing NM_201598
Red=Cloning site Green=Tags(s)

MAPEENAGTELLQLSFERRFLAARTLRSFPWQSLEAKLRDSSSELLRDILHKTVKHPVCVKHPPSVKYA
 RCFLSELIKKPSGGSVTLSESTAIISYGTGLVTWDAALYLAEWAIENPAVFTNRNVLVLELGGAGLTGLA
 ICKMCRPRAYIFSDCHSRVLEQLRGNVLLNGLSLEADITAKLDSRVTVAQLDWDVATVHQLSAFQPDVV
 IAADVLYCPEAIMSLVGLRRLAACREHQRAPEVYVAFVTRNPETCQLFTTELGRAGIRWEVEPRHEQKL
 FPYEEHLEMAMLNLT

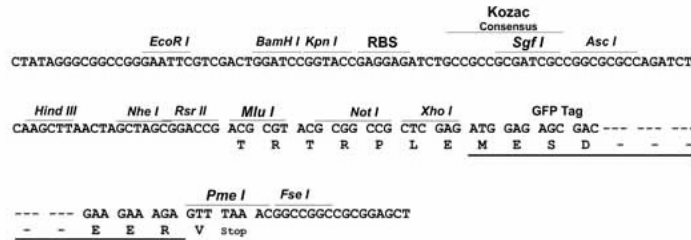
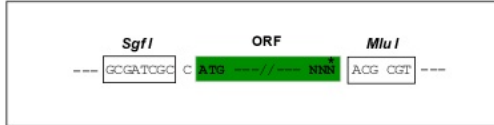
TRTRPLE - GFP Tag - V

Restriction Sites:

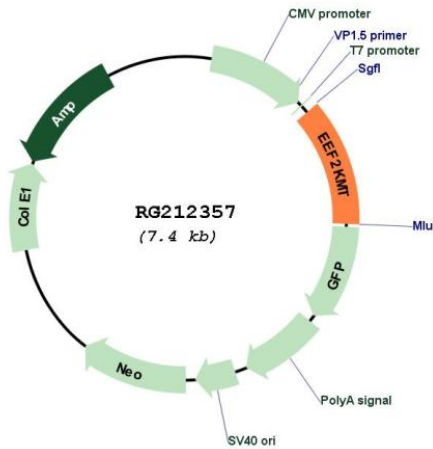
SgfI-MluI

Cloning Scheme:

Cloning sites used for ORF Shuttling:



Plasmid Map:



ACCN: NM_201598

ORF Size: 888 bp

OTI Disclaimer:	The molecular sequence of this clone aligns with the gene accession number as a point of reference only. However, individual transcript sequences of the same gene can differ through naturally occurring variations (e.g. polymorphisms), each with its own valid existence. This clone is substantially in agreement with the reference, but a complete review of all prevailing variants is recommended prior to use. More info
OTI Annotation:	This clone was engineered to express the complete ORF with an expression tag. Expression varies depending on the nature of the gene.
Components:	The ORF clone is ion-exchange column purified and shipped in a 2D barcoded Matrix tube containing 10ug of transfection-ready, dried plasmid DNA (reconstitute with 100 ul of water).
Reconstitution Method:	<ol style="list-style-type: none">1. Centrifuge at 5,000xg for 5min.2. Carefully open the tube and add 100ul of sterile water to dissolve the DNA.3. Close the tube and incubate for 10 minutes at room temperature.4. Briefly vortex the tube and then do a quick spin (less than 5000xg) to concentrate the liquid at the bottom.5. Store the suspended plasmid at -20°C. The DNA is stable for at least one year from date of shipping when stored at -20°C.
RefSeq:	NM_201598.3 , NP_963892.1
RefSeq Size:	1330 bp
RefSeq ORF:	891 bp
Locus ID:	196483
UniProt ID:	Q96G04
Cytogenetics:	16p13.3
Gene Summary:	Catalyzes the trimethylation of eukaryotic elongation factor 2 (EEF2) on 'Lys-525'. [UniProtKB/Swiss-Prot Function]