

Product datasheet for **RG212354**

MEGF9 (NM_001080497) Human Tagged ORF Clone

Product data:

Product Type:	Expression Plasmids
Product Name:	MEGF9 (NM_001080497) Human Tagged ORF Clone
Tag:	TurboGFP
Symbol:	MEGF9
Synonyms:	EGFL5
Mammalian Cell Selection:	Neomycin
Vector:	pCMV6-AC-GFP (PS100010)
E. coli Selection:	Ampicillin (100 ug/mL)



[View online »](#)

ORF Nucleotide Sequence:

>RG212354 representing NM_001080497
 Red=Cloning site Blue=ORF Green=Tags(s)

TTTTGTAATACGACTCACTATAGGGCGGCCGGAATTCGTCGACTGGATCCGGTACCGAGGAGATCTGCC
 GCC**CGCATCGCC**

ATGAGGAGCCTGCCGAGCCTGGGCGGCCTCGCCCTGTTGTGCTGCGCCGCCGCCGCCGCCGCCGCCGCC
 TCGCCTCAGCCGCTCGGCGGGGAATGTACACCGTGGCGGCGGGCCCGGGGCAGGTGGACGCGTCGCC
 GGGCCCCGGTTGCGGGGCGAGCCAGCCACCCCTCCCTAGGGCGACGGCTCCCACGGCCAGGCCCGG
 AGGACCGGGCCCCGCGCGCCACCGTCCACCGACCCCTGGCTGCGACTTCTCCAGCCAGTCCCCGGAGA
 CCACCCCTCTTTGGGCGACTGCTGGACCCTCTCCACCACCTTTCAGGCGCGCTCGGCCCTCGCCGAC
 CACCCCTCGGCGGGGAACGCACCTTCGACCACCTCTCAGGCGCCGACCAGACCCGCGCCGACCACCCCT
 TCGACGACCCTGGCCCGGCGCCGACCACCCCTGTAGCGACCACCGTACCGGCGCCACGACTCCCCGGA
 CCCCAGCCCCGATCTCCCAGCAGCAGCAACAGCAGCGTCTCCCACCCACCTGCCACCGAGGCCCC
 CTCTTCGCTCTCCAGGGCATCAGTGGCTGTGGCAAAGATGCCCAAAAGTATCTAGGAAAATATGCC
 TGTGAGAGTAACCTGAAAAGCAAGTACTTGCCCTTACACAGCCAGTCATGAATCTTAGAGTCTCAGAAG
 CTGTTAAAACGGAGTATGTATGTAACCTGCTCTGTGGTTGGAAGCCTGAATGTGAATCGCTGCAACCAGAC
 CACAGGGCAGTGTGAGTGTGGCCAGGTTATCAGGGGCTTCACTGTGAAACCTGCAAAGAGGGCTTTTAC
 CTAATTACACTTCTGGGCTCTGTGAGCCATGTGACTGTAGTCCACATGGAGCTCTCAGCATACCGTGCA
 ACAGTTCTGGGAAATGCCAGTGCAAAGTGGGTGTCATTGGCTCTATATGTGACCGATGCCAAGATGGATA
 TTATGGCTTTAGTAAGAATGGCTGCTTGCCCTGCCAATGCAATAATCGGTCTGCCAGTTGCGATGCCCTC
 ACAGGTGCTTGTAAACTGCCAGGAAAATAGCAAAGGAAATCACTGTGAAGAATGTAAGAAGGATTTT
 ATCAGAGTCCTGATGCCACTAAAGAATGCTTCGCTGCCCTTGTTCAGCAGTGACATCTACAGGACGCTG
 CTCTATAAAATCGAGTGAATTGGAACCTGAATGTGACCAGTGTAAAGATGGTTACATAGGCCCGAAGTGC
 AATAAATGTGAAAATGGCTATTACAATTTTGACAGCATCTGTAGAAAAGTCCAATGTCACGGCCATGTGG
 ACCCAGTAAAACCTCAAAGATTTGTAAGCCCGAGAGTGGTGTGATCAACTGCCTCCATAACACCAC
 TGGGTTTTGGTGTGAGAACTGCCTAGAAGTTATGTTACGACCTCGAGGGAAAATGCATCAAGAAAGAA
 GTTATTCTTCAAACCTGAAGTTCTACCATTTTGGTTTCCAATGCCTCTTTGACCACATCAGTGCCCA
 CCCCTGTATAAATAGTACTTTTACCCCTACAACCCTGCAGACTATCTTTTTCAGTAAAGCCTTCTGAAA
 CAGCACTTCACTTTAGCTGATGTATCATGGACCAATTAACATCATCATTTTTCAGTATCATCATT
 GTTGTGGTGTGTAATGGGATTTGTGGGGCTGTATATATGTACCGGAGTACCAAAACCGGAAACTCA
 ATGCCCTTTTGGACCATCGAGCTGAAAGAAGACAATATCAGTTTTCAGCAGCTACCATGACAGCATTCC
 CAATGCAGATGTTTCGGGATTTGTGGAAGATGATGGCAATGAAGTGGCTCCAATGGGCAGCTGACCCCTG
 ACGACGCCATACATAACTACAAAGCC

AG**CGGACCG**ACGCGTACGCGGCCGCTCGAG - GFP Tag - GTTTAA

Protein Sequence:

>RG212354 representing NM_001080497
 Red=Cloning site Green=Tags(s)

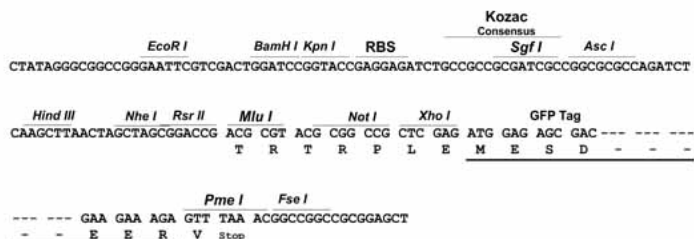
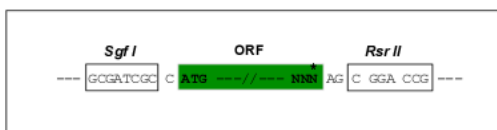
MRSLSLGLLALLCCAAAAAASASAASAGNVTGGGGAAGQVDASPGPLRGEPSPHPFRATAPTAQAP
 RTGPPRATVHRPLAATSPAQSPETTPPLWATAGPSSTTFQAPLGPSPTTPPAERTSTTSQAPTRPAPTTL
 STTTGPAPTPVATTVPAPTPRTPDLPSSSNSVLPPTPATEAPSSPPPGHQWPVAKMPQKYLKGYA
 CESNLKSKYLPLTQPMNLRVSEAVKTEYVCNCSVVGSLNVNRCNQTTGQCECRPGYQGLHCETCKEGFY
 LNYTSGLCQPCDCSPHGALSIPCNSSGKQCKVGVIGSIDRCQDGYGFSKNGLPCQCNRSASCDAL
 TGACLNQCENSKGNHCEECKEGFYQSPDATKECLRPCSAVTSTGSCSIKSSELEPECDQCKDGYIGPNC
 NKCEYNYNFDISCRKQCCHGHVDPVKTPKICKPESGECINLHNTTGFWCENCLEGYVHDLLEGNCIKKE
 VILPTPEGSTILVSNASLTTVPVPTVINSTFTPTLQTFVSVSTSENSTALADVSWTQFNIIILTVIII
 VVLLMGFVGVYMYREYQNRKLNAPFWTIELKEDNISFSSYHDSIPNADVSLLEDDGNEVAPNGQLTL
 TPIHNYKA

SGP**TRRRLE** - GFP Tag - V

Restriction Sites: SgfI-RsrII

Cloning Scheme:

Cloning sites used for ORF Shuttling:



ACCN: NM_001080497

ORF Size: 1917 bp

OTI Disclaimer: The molecular sequence of this clone aligns with the gene accession number as a point of reference only. However, individual transcript sequences of the same gene can differ through naturally occurring variations (e.g. polymorphisms), each with its own valid existence. This clone is substantially in agreement with the reference, but a complete review of all prevailing variants is recommended prior to use. [More info](#)

OTI Annotation: This clone was engineered to express the complete ORF with an expression tag. Expression varies depending on the nature of the gene.

Components: The ORF clone is ion-exchange column purified and shipped in a 2D barcoded Matrix tube containing 10ug of transfection-ready, dried plasmid DNA (reconstitute with 100 ul of water).

Reconstitution Method:

1. Centrifuge at 5,000xg for 5min.
2. Carefully open the tube and add 100ul of sterile water to dissolve the DNA.
3. Close the tube and incubate for 10 minutes at room temperature.
4. Briefly vortex the tube and then do a quick spin (less than 5000xg) to concentrate the liquid at the bottom.
5. Store the suspended plasmid at -20°C. The DNA is stable for at least one year from date of shipping when stored at -20°C.

RefSeq: [NM_001080497.1](#), [NP_001073966.1](#)

RefSeq Size: 6297 bp

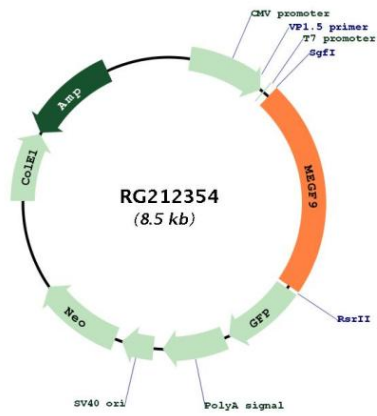
RefSeq ORF: 1809 bp

Locus ID: 1955

UniProt ID: [Q9H1U4](#)

Cytogenetics: 9q33.2

Product images:



Circular map for RG212354