

Product datasheet for **RG212345**

FUT8 (NM_178154) Human Tagged ORF Clone

Product data:

Product Type:	Expression Plasmids
Product Name:	FUT8 (NM_178154) Human Tagged ORF Clone
Tag:	TurboGFP
Symbol:	FUT8
Synonyms:	MGC26465
Mammalian Cell Selection:	Neomycin
Vector:	pCMV6-AC-GFP (PS100010)
E. coli Selection:	Ampicillin (100 ug/mL)



[View online »](#)

ORF Nucleotide Sequence:

>RG212345 representing NM_178154
 Red=Cloning site Blue=ORF Green=Tags(s)

TTTTGTAATACGACTCACTATAGGGCGGCCGGAATTCGTCGACTGGATCCGGTACCGAGGAGATCTGCC
 GCC**CGGATCGCC**

ATCGGCCATGGACTGGTTCCTGGCGTTGGATTATGCTCATTCTTTTGCCTGGGGACCTTGCTGTTTT
 ATATAGGTGGTCACTTGGTACGAGATAATGACCATCCTGATCACTCTAGCCGAGAACTGTCCAAGATTCT
 GGCAAAGCTTGAACGCTTAAAACAACAGAAATGAAGACTTGAGGCGAATGGCCGAATCTCTCCGGATACCA
 GAAGGCCCTATTGATCAGGGGCCAGCTATAGGAAGAGTACGCGTTTTAGAAGAGCAGCTTGTAAAGGCCA
 AAGAACAGATTGAAAATTACAAGAAACAGACCAGAAATGGTCTGGGGAAGGATCATGAAATCCTGAGGAG
 GAGGATTGAAAATGGAGCTAAAGAGCTCTGTTTTTCTACAGAGTGAATTGAAGAAATTAAGAACTTA
 GAAGGAAATGAACTCAAAGACATGCAGATGAATTTCTTTGGATTTAGGACATCATGAAAGGTCTATAA
 TGACGGATCTATACTACCTCAGTCAGACAGATGGAGCAGGTGATTGGCGGAAAAAGAGGCCAAAGATCT
 GACAGAACTGGTTCAGCGGAGAATAACATATCTTCAGAATCCCAAGGACTGCAGCAAAGCCAAAAAGCTG
 GTGTGTAATATCAACAAAGGCTGTGGCTATGGCTGTCAGCTCCATCATGTGGTCTACTGTTTCATGATTG
 CATATGGCACCCAGCGAACACTCATCTTGAATCTCAGAATTGGCGCTATGCTACTGGTGGATGGGAGAC
 TGTATTTAGGCCGTGAAGTGAGACATGCACAGACAGATCTGGCATCTCCACTGGACACTGGTCAGGTGAA
 GTGAAGGACAAAAATGTTCAAGTGGTCGAGCTTCCCATTTAGACAGTCTTCATCCCCGTCTCCATATT
 TACCCTTGGCTGTACCAGAAGACCTCGCAGATCGACTTGTACGAGTGCATGGTGACCCTGCAGTGTGGTG
 GGTGTCTCAGTTTGTCAAATACTTGATCCGCCACAGCCTTGGCTAGAAAAAGAAATAGAAGAAGCCACC
 AAGAAGCTTGGCTCAAACATCCAGTTATTGGAGTCCATGTCAGACGCACAGACAAAGTGGGAACAGAAG
 CTGCCTCCATCCATTGAAGAGTACATGGTGCATGTTGAAGAACATTTTCAGCTTCTTGACGCAGAAAT
 GCAAGTGGACAAAAAAGAGTGTATTTGGCCACAGATGACCCCTCTTTATTAAGGAGGCCAAAAACAAAG
 TACCCCAATTATGAATTTATTAGTGATAACTCTATTTCTGGTCACTGGACTGCACAATCGATACACAG
 AAAATTCACTTTCGTGGAGTGATCCTGGATATACATTTTCTCTCAGGCAGACTTCTAGTGTGACTTTT
 TTCATCCAGGTCTGTCGAGTTGCTTATGAAATATGCAAACACTACATCCTGATGCCTCTGCAAATTC
 CATTCTTTAGATGACATCTACTATTTTGGGGCCAGAATGCCACAATCAAATTGCCATTTATGCTCACC
 AACCCCGAACTGCAGATGAAATCCCATGGAACCTGGAGATATCATTGGTGTGGCTGGAATCATTGGGA
 TGGCTATTCTAAAGGTGTCAACAGGAAATGGGAAGGACGGCCATATCCCTCTACAAAGTTCGAGAG
 AAGATAGAAACGGTCAAGTACCCACATATCCTGAGGCTGAGAAA

AG**CGGACCG**ACGCGTACGCGGCCGCTCGAG - GFP Tag - GTTTAA

Protein Sequence:

>RG212345 representing NM_178154
 Red=Cloning site Green=Tags(s)

MRPWTGSWRWIMLILFAWGTLIFYIGGHLVRDNDHPDHSSRELSKILAKLERLQKQNEQLRRMAESLRIP
 EGPIDQGPAIGRVRVLEEQLVKAKEQIENYKQTRNGLGKDHEILRRRIENGAKELWFFLQSELKKLKNL
 EGNELQRHADEFLLDLGHHERSIMTDLYLSQTDGAGDWREKEAKDLTELVQRRITYLQNPKDCSKAKKL
 VCNINKGCGYGCQLHHVVYCFMIAYGTRTLILESQNWRYPATGGWETVFRPVSETCTDRSGISTGHWSGE
 VKDKNVQVVELPIVDSLHPRPPYLPLAVPEDLADRLVRVHGDPVWVVSQFVKYLIRPQPWLEKEIEEAT
 KKLGFKHPVIGVHVRRTDKVGTEAAFHPIEEYMHVVEEHFQLARRMQVDKRVYLATDDPSLLKEAKTK
 YPNYEFISDNSISWSAGLHNRYTENSRLGVILDIHFLSQADFLVCTFSSQVCRVAYEIMQTLHPDASANF
 HSLDDIYYFGGQNAHNQIAIYAHQPRTADEIPMEPGDIIGVAGNHWGYSKGVNRKLGRTGLYPSYKRVRE
 KIETVKYPTYPEAEK

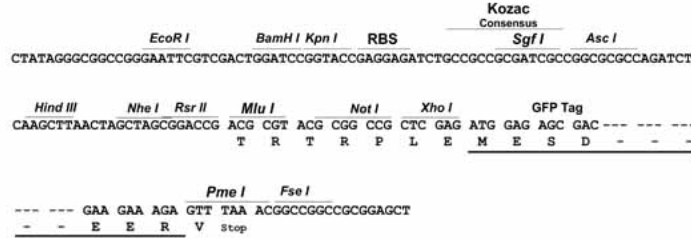
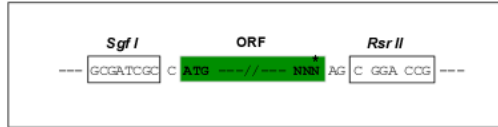
SGP**TRRRLE** - GFP Tag - V

Restriction Sites:

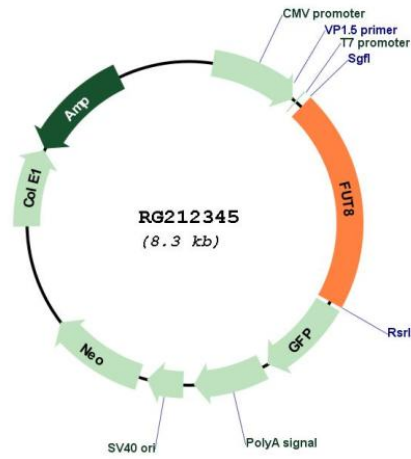
SgfI-RsrII

Cloning Scheme:

Cloning sites used for ORF Shuttling:



Plasmid Map:



ACCN: NM_178154
 ORF Size: 1725 bp

OTI Disclaimer:	The molecular sequence of this clone aligns with the gene accession number as a point of reference only. However, individual transcript sequences of the same gene can differ through naturally occurring variations (e.g. polymorphisms), each with its own valid existence. This clone is substantially in agreement with the reference, but a complete review of all prevailing variants is recommended prior to use. More info
OTI Annotation:	This clone was engineered to express the complete ORF with an expression tag. Expression varies depending on the nature of the gene.
Components:	The ORF clone is ion-exchange column purified and shipped in a 2D barcoded Matrix tube containing 10ug of transfection-ready, dried plasmid DNA (reconstitute with 100 ul of water).
Reconstitution Method:	<ol style="list-style-type: none">1. Centrifuge at 5,000xg for 5min.2. Carefully open the tube and add 100ul of sterile water to dissolve the DNA.3. Close the tube and incubate for 10 minutes at room temperature.4. Briefly vortex the tube and then do a quick spin (less than 5000xg) to concentrate the liquid at the bottom.5. Store the suspended plasmid at -20°C. The DNA is stable for at least one year from date of shipping when stored at -20°C.
RefSeq:	NM_178154.1 , NP_835367.1
RefSeq Size:	3291 bp
RefSeq ORF:	1727 bp
Locus ID:	2530
Cytogenetics:	14q23.3
Protein Families:	Transmembrane
Protein Pathways:	Keratan sulfate biosynthesis, Metabolic pathways, N-Glycan biosynthesis
Gene Summary:	This gene encodes an enzyme belonging to the family of fucosyltransferases. The product of this gene catalyzes the transfer of fucose from GDP-fucose to N-linked type complex glycopeptides. This enzyme is distinct from other fucosyltransferases which catalyze alpha1-2, alpha1-3, and alpha1-4 fucose addition. The expression of this gene may contribute to the malignancy of cancer cells and to their invasive and metastatic capabilities. Alternative splicing results in multiple transcript variants. [provided by RefSeq, May 2011]