

Product datasheet for **RG212320**

ARID2 (NM_152641) Human Tagged ORF Clone

Product data:

Product Type: Expression Plasmids
Product Name: ARID2 (NM_152641) Human Tagged ORF Clone
Tag: TurboGFP
Symbol: ARID2
Synonyms: BAF200; CSS6; p200
Mammalian Cell Selection: Neomycin
Vector: pCMV6-AC-GFP (PS100010)
E. coli Selection: Ampicillin (100 ug/mL)
ORF Nucleotide Sequence: >RG212320 representing NM_152641
Red=Cloning site Blue=ORF Green=Tags(s)

TTTTGTAATACGACTCACTATAGGGCGGCCGGAATTCGTCGACTGGATCCGGTACCGAGGAGATCTGCC
 GCCCGATCGCC

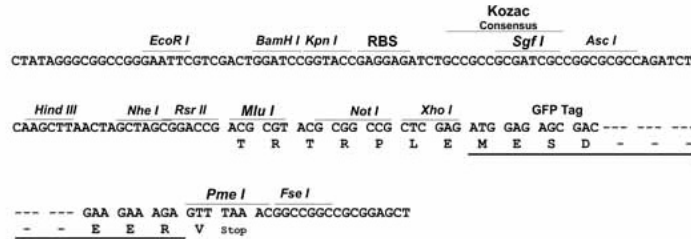
ATGGCAAACCTCGACGGGAAGGCGCCTCCGACGAGCGGAGAAAGGGACTCGCTTTCCTGGACGAGCTGC
 GGCAGTTCACCCACAGCAGAGGGTGCCTTTTAAAAAATCCCTGCGGTGGTGGGAAGGAGCTGGATCT
 TCACGGTCTCTACACCAGAGTCACTACTTTAGGCGGATTCGCGAAGGTTTCTGAGAAGAATCAGTGGGA
 GAAATTGTTGAAGAGTTCAACTTTCCAGAAGTTGTTCTAACGCTGCCTTTGCTTTAAACAGTATTACT
 TCGGTTACCTAGAAAAGTACGAGAAAGTTCATCATTTTGGGAGGATGATGATGAGTACCACCAGGCAA
 TCCAAAGCCACAGCTTCTATTGGTGAATTCCATCTTCTACAATTACCAGCAACACAGTGTGTGGAT
 TATCTGCGTCAAAGTTATGGGCTGTCCATGGACTTTAATTCGCCAAATGATTATAATAAATTGGTGCCTT
 CACTGTTATCTGGACTCCAAATGAAGTGGACTTTGCTATTAACGTATGCACTCTCCTATCAAATGAAA
 CAAGCAGTCAATGCAACTTGAAAAGATCCTAAAATCATCACTTTACTACTTGCTAATGCCGGGTGTTT
 GACGACTTTAGGATCCTTTCCACTGTATTTGGAGAAGAAATGGAAAGAGAAGACTGATAGAGACTTCG
 TTAAGTTTGGAAAGACATCGTTGATGATAATGAAGTTCGTGACCTCATTCTGACAGAAACAAGTCTCA
 TGAAGGTACATCAGGAGAATGGATTTGGGAGTCTTTATTTCCACCTCGAAAGCTGGGCATTAACGAT
 ATTGAAGGACAGCGGACTCTTCAGATTGCAGTGATTTTGGAGAAATCTTTCTTTGAGGAGGCAATGTTA
 AGCTCTTGGCAGCTAATGTACCTGTCTTCTGTTTCTTACTTTCTGCACATAGTCATTTTATTTCTTT
 AAGGCAATTAGGCCTTGACACATTAGGAAATATTGCAGCTGAGCTTTTACTGGACCCTGTTGATTTCAAA
 ACTACTCATCTGATGTTTCATACTGTTACAAAATGTCTAATGTCAAGGGATAGATTTTTAAAGATGAGAG
 GCATGGAAATTTGGGAAATCTTTGCAAAGCAGAAGATAATGGTGTTTTAAATTTGTAATATGTGGATCA
 GGATTCACAGAGAGATCATTGTGTCATCTCACTTTACCTGATGTGCTGCTTGAATCTCAACACTCGAG
 GTGCTATACATGCTCACGAAAATGGGAGATGTTGCTTGCACAAAATGCAAAGTAGAAAAGAGCATAG
 ACATGTTAGTGTGCTGTTTCTATGGATTCAGATGTTTGGCCCTGATGCACTAGCTGCGGTAACCT
 CATTGAACACCCAAGTTCAGTCATCAAATGTTATCTGAAATTAGCCACAAGCTATAGAGCAAGTCCAA



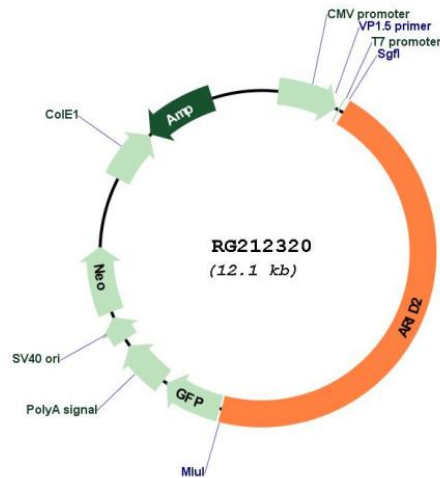
[View online >](#)

Cloning Scheme:

Cloning sites used for ORF Shutting:



Plasmid Map:



ACCN: NM_152641

ORF Size: 5505 bp

OTI Disclaimer:	Due to the inherent nature of this plasmid, standard methods to replicate additional amounts of DNA in E. coli are highly likely to result in mutations and/or rearrangements. Therefore, OriGene does not guarantee the capability to replicate this plasmid DNA. Additional amounts of DNA can be purchased from OriGene with batch-specific, full-sequence verification at a reduced cost. Please contact our customer care team at custsupport@origene.com or by calling 301.340.3188 option 3 for pricing and delivery.
	The molecular sequence of this clone aligns with the gene accession number as a point of reference only. However, individual transcript sequences of the same gene can differ through naturally occurring variations (e.g. polymorphisms), each with its own valid existence. This clone is substantially in agreement with the reference, but a complete review of all prevailing variants is recommended prior to use. More info
OTI Annotation:	This clone was engineered to express the complete ORF with an expression tag. Expression varies depending on the nature of the gene.
Components:	The ORF clone is ion-exchange column purified and shipped in a 2D barcoded Matrix tube containing 10ug of transfection-ready, dried plasmid DNA (reconstitute with 100 ul of water).
Reconstitution Method:	<ol style="list-style-type: none"> 1. Centrifuge at 5,000xg for 5min. 2. Carefully open the tube and add 100ul of sterile water to dissolve the DNA. 3. Close the tube and incubate for 10 minutes at room temperature. 4. Briefly vortex the tube and then do a quick spin (less than 5000xg) to concentrate the liquid at the bottom. 5. Store the suspended plasmid at -20°C. The DNA is stable for at least one year from date of shipping when stored at -20°C.
RefSeq:	NM_152641.4
RefSeq Size:	8466 bp
RefSeq ORF:	5508 bp
Locus ID:	196528
UniProt ID:	Q68CP9
Cytogenetics:	12q12
Protein Families:	Transcription Factors
Gene Summary:	This gene encodes a member of the AT-rich interactive domain (ARID)-containing family of DNA-binding proteins. Members of the ARID family have roles in embryonic patterning, cell lineage gene regulation, cell cycle control, transcriptional regulation and chromatin structure modification. This protein functions as a subunit of the polybromo- and BRG1-associated factor or PBAF (SWI/SNF-B) chromatin remodeling complex which facilitates ligand-dependent transcriptional activation by nuclear receptors. Mutations in this gene are associated with hepatocellular carcinomas. A pseudogene of this gene is found on chromosome1. [provided by RefSeq, Dec 2016]