

## Product datasheet for **RG212311**

### **CYP3A43 (NM\_057095) Human Tagged ORF Clone**

#### **Product data:**

Product Type:	Expression Plasmids
Product Name:	CYP3A43 (NM_057095) Human Tagged ORF Clone
Tag:	TurboGFP
Symbol:	CYP3A43
Mammalian Cell Selection:	Neomycin
Vector:	pCMV6-AC-GFP (PS100010)
E. coli Selection:	Ampicillin (100 ug/mL)



[View online »](#)

**ORF Nucleotide Sequence:**

>RG212311 representing NM\_057095  
 Red=Cloning site Blue=ORF Green=Tags(s)

TTTTGTAATACGACTCACTATAGGGCGGCCGGAATTCGTCGACTGGATCCGGTACCGAGGAGATCTGCC  
 GCC**CGGATCGCC**

ATGGATCTCATTCCAACCTTTGCCATGGAACATGGGTTCTTGTGGCTACCAGCCTGGTACTCCTCTATA  
 TTTATGGACCCATTACATAAACTTTTTAAGAAGCTGGGAATTCCTGGGCCAACCCCTCTGCCTTTTCT  
 GGGAACTATTTTGTCTACCTTAGGGTCTTTGGAATTTTGACAGAGAATGTAATGAAAAATACGGAGAA  
 ATGTGGGGCTGTATGAGGGCAACAGCCCATGCTGGTCATCATGGATCCCGACATGATCAAAACAGTGT  
 TAGTGAAGAATGTTACTCTGTCTTACAAACCAGATGCCTTTAGGTCCAATGGGATTTCTGAAAAGTGC  
 CTTAAGTTTTGCTGAAGATGAAGAATGGAAGAGAATACGAACATTGCTATCTCCAGCTTTCACCAGTGA  
 AAATCAAGGAAATGGTCCCATCATTTCCAATGTGGAGATATGTTGGTGAAGCCTGAGGCAGGAAG  
 CAGAGAACAGCAAGTCCATCAACTTGAAGATTTCTTTGGGCCCTACCCATGGATGTAATCACTGGCAC  
 ATTATTTGGAGTGAAGTGGATTCTCTCAACAATCCACAAGATCCCTTTCTGAAAAATATGAAGAAGCTT  
 TAAAAATTGGATTTTTTGGATCCCTTTTACTCTTAATATCACTCTTTCATTTCTACCCAGTTTTTTG  
 AAGCCCTAAATATCGGTTTGTTCAAAAGATGTTACCCATTTTTTAAAAAATCCATTGAAAGGATGAA  
 AGAAAGTCGCCTCAAAGATAACAAAAGCATCGAGTAGATTTCTTTCAACAGATGATCGACTCCCAGAAT  
 TCCAAAGAAACAAAGTCCATAAAGCTCTGTCTGATCTGGAGCTTGTGGCCCACTCAATTATCATCATTT  
 TTGCTGCCTATGACACAACACTAGCACCCTCTCCCTTCATTATGTATGAACTGGCCACTCACCTGATGT  
 CCAGCAGAAACTGCAGGAGGAGATTGACGCAGTTTTACCAATAAGGCACCTGTACCTACGATGCCCTG  
 GTACAGATGGAGTACCTTGACATGGTGGTGAATGAAACGCTCAGATTATCCAGTTGTTAGTAGAGTTA  
 CGAGAGTCTGCAAGAAAGATATTGAAATCAATGGAGTGTTCATTTCCAAAGGGTTAGCAGTGTGTTCC  
 AATCTATGCTCTTCAACATGACCAAAAGTACTGGACAGAGCCTGAGAAGTTCTGCCCTGAAAGGTTCA  
 AAGAAGAACAAGGACAGCATAGATCTTTACAGATACATACCTTTTGGAGCTGGACCCGAAAAGTGCATTG  
 GCATGAGGTTTGTCTCACAAACATAAACTTGTGTCTATTAGAGCACTGCAGAATTCTCCTTCAAACC  
 TTGTAAGAGACTCAGATCCCACTGAAATTAGACAATCTACCAATTCTTCAACCAGAAAAACCTATTGTT  
 CTAAGTGCCTTAAGAGATGGGATTACAAGTGGACCC

**ACGCGT**ACGCGGCCGCTCGAG - GFP Tag - GTTTAA

**Protein Sequence:**

>RG212311 representing NM\_057095  
 Red=Cloning site Green=Tags(s)

MDLIPNFAMETWVLVATSLVLLYIYGTHSHKLFKKLGIPGPTPLPFLGTLFYLRGLWNFDRECNEKYGE  
 MWGLYEGQPMLVIMDPDIKTVLVKECYSVFTNQMPGLGPMGFLKSALSFAEDEEWKIRITLLSPAFTSV  
 KFKEMVPIISQCGDMLVRSLRQEAENSKSINLKDFFGAYTMDVITGTLFGVNLDSLNNPQDPFLKNMKKL  
 LKLDLDFPFLLLISLFPFLTPVFEALNIGLFPKDVTHFLKNSIERMKESRLKDKQKHRVDFQQMIDSQN  
 SKETKSHKALSDLELVAQSIIIIIFAAAYDTTSTLTPFIMYELATHPDVQQLQEEIDAVLPNKAPVTYDAL  
 VQMEYLDMVNETLRLFPVVSrvTRVCKKIDIEINGVFI PKGLAVMVIYALHHPKYWTEPEKFCPERFS  
 KKNKDSIDLRYIPFGAGPRNCIGMRFALTNIKLAVIRALQNF SFKPKETQIPLKLDNLPILQPEKPIV  
 LKVHLRDLGITS GP

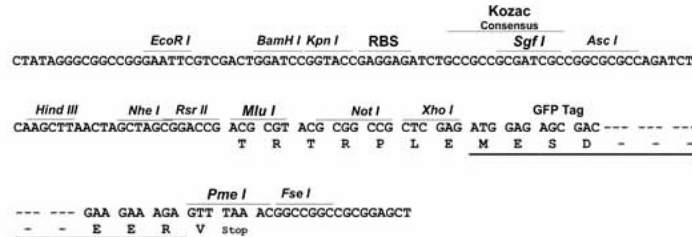
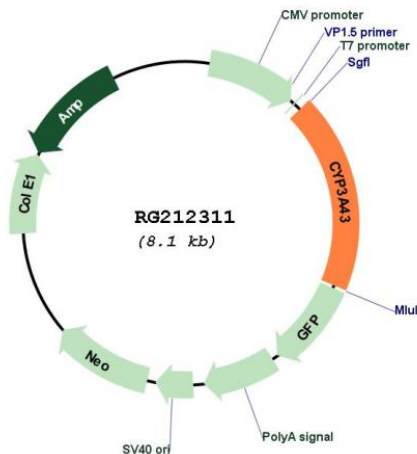
**TRTRPLE** - GFP Tag - V

**Restriction Sites:**

Sgfl-MluI

**Cloning Scheme:**

Cloning sites used for ORF Shutting:


**Plasmid Map:**

**ACCN:** NM\_057095

**ORF Size:** 1509 bp

**OTI Disclaimer:** The molecular sequence of this clone aligns with the gene accession number as a point of reference only. However, individual transcript sequences of the same gene can differ through naturally occurring variations (e.g. polymorphisms), each with its own valid existence. This clone is substantially in agreement with the reference, but a complete review of all prevailing variants is recommended prior to use. [More info](#)
**OTI Annotation:** This clone was engineered to express the complete ORF with an expression tag. Expression varies depending on the nature of the gene.

**Components:** The ORF clone is ion-exchange column purified and shipped in a 2D barcoded Matrix tube containing 10ug of transfection-ready, dried plasmid DNA (reconstitute with 100 ul of water).

<b>Reconstitution Method:</b>	<ol style="list-style-type: none"><li>1. Centrifuge at 5,000xg for 5min.</li><li>2. Carefully open the tube and add 100ul of sterile water to dissolve the DNA.</li><li>3. Close the tube and incubate for 10 minutes at room temperature.</li><li>4. Briefly vortex the tube and then do a quick spin (less than 5000xg) to concentrate the liquid at the bottom.</li><li>5. Store the suspended plasmid at -20°C. The DNA is stable for at least one year from date of shipping when stored at -20°C.</li></ol>
<b>RefSeq:</b>	<a href="#">NM_057095.3</a>
<b>RefSeq Size:</b>	2164 bp
<b>RefSeq ORF:</b>	1512 bp
<b>Locus ID:</b>	64816
<b>UniProt ID:</b>	<a href="#">Q9HB55</a>
<b>Cytogenetics:</b>	7q22.1
<b>Protein Families:</b>	Druggable Genome, Transmembrane
<b>Protein Pathways:</b>	Drug metabolism - cytochrome P450, Drug metabolism - other enzymes, Linoleic acid metabolism, Metabolic pathways, Metabolism of xenobiotics by cytochrome P450, Retinol metabolism
<b>Gene Summary:</b>	<p>This gene encodes a member of the cytochrome P450 superfamily of enzymes. The cytochrome P450 proteins are monooxygenases which catalyze many reactions involved in drug metabolism and synthesis of cholesterol, steroids and other lipids. The encoded protein has a low level of testosterone hydroxylase activity, and may play a role in aging mechanisms and cancer progression. This gene is part of a cluster of cytochrome P450 genes on chromosome 7q21.1. Alternate splicing results in multiple transcript variants encoding different isoforms. [provided by RefSeq, Jul 2013]</p>