

## Product datasheet for **RG212294**

### Desmoglein 2 (DSG2) (NM\_001943) Human Tagged ORF Clone

#### Product data:

Product Type:	Expression Plasmids
Product Name:	Desmoglein 2 (DSG2) (NM_001943) Human Tagged ORF Clone
Tag:	TurboGFP
Symbol:	Desmoglein 2
Synonyms:	CDHF5; HDGC
Mammalian Cell Selection:	Neomycin
Vector:	pCMV6-AC-GFP (PS100010)
E. coli Selection:	Ampicillin (100 ug/mL)
ORF Nucleotide Sequence:	>RG212294 representing NM_001943 Red=Cloning site Blue=ORF Green=Tags(s)

TTTTGTAATACGACTCACTATAGGGCGGCCGGAATTCGTCGACTGGATCCGGTACCGAGGAGATCTGCC  
GCC**CGATCGCC**

ATGGCGCGGAGCCCGGGACGCGCTACGCCCTGCTGCTTCTCCTGATCTGCTTTAACGTTGGAAGTGGAC  
TTCACCTACAGGTCTTAAGCACAAGAAATGAAAATAAGCTGCTTCTAAACATCCTCATTAGTGCGGCA  
AAAGCGCGCTGGATCACCGCCCCGTGGCTCTTCGGGAGGGAGAGGATCTGTCCAAGAAGAATCCAATT  
GCCAAGATACATTCTGATCTTGCAAGAAGAGGACTCAAATTACTTACAAATACACTGGAAGGGGA  
TTACAGAGCCACCTTTTGGTATATTTGTCTTTAACAAAGATACTGGAGAAGTGAATGTACCAGCATTCT  
TGATCGAGAAGAAACACCATTTTTCTGCTAACAGGTTACGCTTTGGATGCAAGAGGAAACAATGTAGAG  
AAACCCCTAGAGCTACGCATTAAGGTTCTTGATATCAATGACAACGAACCAAGTGTTCACACAGGATGCT  
TTGTTGGGTCTGTTGAAGAGTTGAGTGCAGCACATACTCTTGATGAAAATCAATGCAACAGATGCAGA  
TGAGCCCAATACCTGAATTCGAAAATTCCTATAGAATCGTATCTCTGGAGCCTGCTTATCCTCCAGTG  
TTCTACCTAAATAAGATACAGGAGAGATTTATAACAACAGTGTACCTTGACAGAGAGGAACACAGCA  
GCTACACTTTGACAGTAGAAGCAAGAGATGGCAATGGAGAAGTACAGACAAACCTGTAACAAGCTCA  
AGTTGAGATTGATTTTGGATGTCAATGACAATACCTGTAGTAGAAAATAAAGTGTGAAGGGATG  
GTTGAAGAAAATCAAGTCAAGTGAAGTTACGCGCATAAAAGTTCGATGCAGATGAAATAGGTTCTG  
ATAATTGGCTGGCAATTTTACATTTGCATCAGGAAATGAAGGAGTTATTTCCACATAGAACAGATGC  
TCAAACCTAACGAAGGAATTGTGACCCCTTATTAAGGAAGTAGATTATGAAGAAAATGAAGAATCTTGACTTC  
AGTGTTATTGTCGCTAATAAAGCAGCTTTTACAAAGTCGATTAGGAGTAAATACAAGCCTACACCCATTC  
CCATCAAGGTCAAAGTGAAAAATGTGAAAGAAGGCATTCAATTTAAAAGCAGCGTCATCTCAATTTATGT  
TAGCGAGAGCATGGATAGATCAAGCAAAGGCCAAATAATTGGAATTTTCAAGCTTTTGATGAGGACACT  
GGACTACCAGCCCATGCAAGATATGAAAATTAGAAGATAGAGATAATTGGATCTCTGTGGATTCTGTCA  
CATCTGAAATTAACCTTGCAAACTTCTGATTTTGAATCTAGATATGTTCAAAATGGCACATACACTGT  
AAAGATTGTGCCATATCAGAAGATTATCTAGAAAACCATCACTGGCAGAGTCTTATCAATGTTGAA



[View online »](#)

GACATCAACGACAACTGTCCCACACTGATAGAGCCTGTGCAGACAATCTGTCACGATGCAGAGTATGTGA  
 ATGTTACTGCAGAGGACCTGGATGGACACCCAAACAGTGGCCCTTTCAGTTTCTCCGTCATTGACAAACC  
 ACCTGGCATGGCAGAAAAATGAAAAATAGCACGCCAAGAAAGTACCAGTGTGCTGCTGCAACAAAGTGAG  
 AAAAAGCTTGGGAGAAGTGAATTCAGTTCTGATTTTCAGACAATCAGGGTTTTAGTTGTCTGAAAAGC  
 AGGTCTTACACTCACAGTTTGTGAGTGTCTGCATGGCAGCGGCTGCAGGGAAGCACAGCATGACTCCTA  
 TGTGGGCTGGGACCCGACGAATTGCGCTCATGATTTTGGCCTTCTGCTCTGCTATTGGTACCACCTT  
 TTAAGTGTGATGTCATTGCGAAAGGGCGCCAAAGGCTTACCCCATACCTGCCATTGACAGATGAGATGC  
 TGATCCCTTGAATAATGAAGGAGCACCACTGAAGACAAGGTGGTGCATCATTCTGCCAGTGGATCA  
 AGGGGGCAGTCTAGTAGGAAGAAATGGAGTAGGAGGTATGGCCAAGGAAGCCACGATGAAAGGAAGTAGC  
 TCTGTTCCATTGTCAAAGGGCAACATGAGATGTCGAGATGGATGGAAGGTGGGAAGAACAGAAAGCC  
 TGCTTTCTGGTAGAGCTACCCAGTTTACAGGGGCCACAGGCGCTATCATGACCACTGAAACCACGAAGAC  
 CGCAAGGGCCACAGGGGCTTCCAGAGACATGGCCGGAGCTCAGGCAGCTGCTGTTGCACTGAACGAAGAA  
 TTCTTAAGAAATTATTTCACTGATAAAGCGCCTCTTACACTGAGGAAGATGAAAATCACACAGCCAAAG  
 ATTGCTTCTGGTTTATCTCAGGAAGAAACTGAATCGTGAATGCTTCTATTGGTTGTTGACGTTTTAT  
 TGAAGGAGAGCTAGATGACCGCTTCTTAGATGATTTGGGACTTAAATCAAGACACTAGCTGAAGTTTGC  
 CTGGGTCAAAAAATAGATATAAATAAGGAAATTGAGCAGAGACAAAAACCTGCCACAGAAAACAAGTATGA  
 ACACAGCTTACATTCACCTCTGTGAGCAAACTATGGTTAATTCAGAGAATACCTACTCCTCTGGCAGTAG  
 CTTCCAGTTCCAAAATCTTTGCAAGAAGCCAATGCAGAGAAAGTAACTCAGAAAATAGTCACTGAAAGA  
 TCTGTGCTTCTAGGCAGGCGCAAAAGGTAGCTACACCTTCTCTGACCAATGGCTTCTAGAAATGTGA  
 TAGCAACAGAACTTCTATGTCACAGGGTCCACTATGCCACCAACCCTGTGATCCTGGGTCTAGCCA  
 GCCACAGAGCCTTATTGTGACAGAGAGGGTGTATGCTCCAGCTTCTACCTGGTAGATCAGCCTTATGCT  
 AATGAAGGTACAGTTGTGGTCACTGAAAGAGTAATACAGCCTCATGGGGTGGATCGAATCCTCTGGAAG  
 GCACTCAGCATCTCAAGATGTACCTTACGTGATGGTGAAGGAAAGAGAGAGCTTCTTCCCTCCAGCTC  
 AGGTGTGCAGCCTACTCTGGCCATGCCTAATATAGCAGTAGGACAGAAATGTGACAGTGACAGAAAGAGTT  
 CTAGCACCTGTTCCACTCTGCAATCCAGTTACCAGATCCCCTGAAAATTCTATGACGGCTAGGAACA  
 CCACGGTGTCTGGAGCTGGAGTCCCTGGCCCTCTGCCAGATTTTGGTTTAGAGGAATCTGGTCATTCTAA  
 TTCTACCATAACCACATCTTCCACCAGAGTTACCAAGCATAGCACTGTACAGCATTCTTACTCC

ACGCGTACGCGGCCGCTCGAG – GFP Tag – GTTTAA

**Protein Sequence:**

>RG212294 representing NM\_001943  
 Red=Cloning site Green=Tags(s)

MARSPGRAYALLLLLICFNVGSLHLQVLSTRNENKLLPKHPLVRQKRAWITAPVALREGEDLSKKNPI  
 AKIHSDLAEERGLKITYKYTGKITEPPFGIFVFNKDTGELNVTSLDREETPFFLLTGALDARGNNVE  
 KPLELRKVLVDINDNEPVFTQDFVGSVEELSAHTLVMKINATDAEPNTLNSKISYRIVSLEPAYPPV  
 FYLNKDTGEIYTTSVTLDREEHSSYTLTVEARDNGEVTDKPKVQAQVQIRILDVNDNIPVVENKVLGEM  
 VEENQVNVETRIKVFDADEIGSDNWLANFTFASGNEGGYFHIE TDAQTNIEGIVTLIKEVDYEEMKNLDF  
 SVIVANKAAFHKSIRSKYKPTPIPIKVKVKNVKEGIHFKSSVISIYVSESMRSSHGQIIIGNFQAFDEDT  
 GLPAHARYVKLEDRDNWISVDSVTSEIKLAKLPDFESRYVQNGTYTVKIVAISEDYPRKTIITGTVLINVE  
 DINDNCPTLIEPVQTIChDAEYVNVTAEDLDGHPNSGPF SFSVIDKPPGMAEKWKIARQUESTSVLLQQSE  
 KKLGRSEIQFLISDNQGFSCPEKQVLT TVCECLHGSGCREAQHDSYVGLGPAAIALMILAFLLLLL VPL  
 LLLMCHCGKAKGFTPIPGTIEMLHPWNNEGAPPEDKVVPSFLPVDQGGSLVGRNGVGGMAKEATMKGSS  
 SASIVKQHEMSEMDGRWEEHRSLLSGRATQFTGATGAIMTETTKTARATGASRDMAGAQAVALNEE  
 FLRNYFTDKAASYTEEDENHTAKDCLLVYSQEE TESLNASIGCCSFI EGELDDRFLDDLGLKFKTLAEVC  
 LGQKIDINKEIEQRQKPATETSMNTASHSLCEQTMVNSENTYSSGSSFPVPSLQEAANEKVTQEIVTER  
 SVSSRQAQKVATPLPDMASRNVIATETSYVTGSTMPTTVILGPSQPQLIVTERVYAPASTLVDPQPYA  
 NEGTVVYTERVIQPHGGGSNPLEGTQHLQDVPYVMVRERESFLAPSSGVQPTLAMPNIAVGQNVYTERV  
 LAPASTLQSSYQIPTENSMTARNTTVSGAGVPGPLPDFGLEESGHSNSTITTSSTRVTKHSTVQHSYS

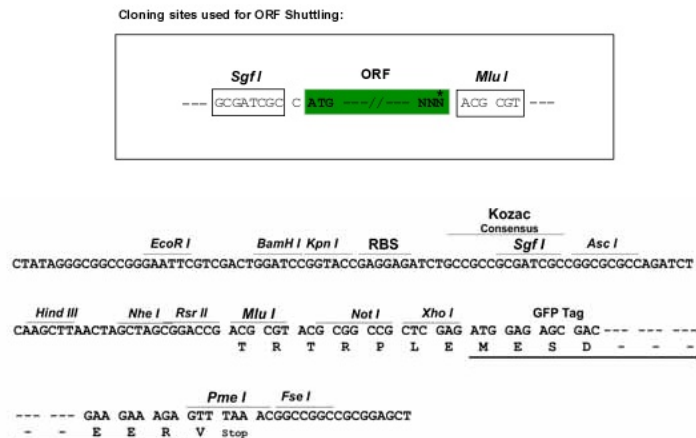
TRTRPLE – GFP Tag – V

**Chromatograms:**

[https://cdn.origene.com/chromatograms/ja2175\\_b03.zip](https://cdn.origene.com/chromatograms/ja2175_b03.zip)

**Restriction Sites:** SgfI-MluI

**Cloning Scheme:**



**ACCN:** NM\_001943

**ORF Size:** 3354 bp

**OTI Disclaimer:** Due to the inherent nature of this plasmid, standard methods to replicate additional amounts of DNA in E. coli are highly likely to result in mutations and/or rearrangements. Therefore, OriGene does not guarantee the capability to replicate this plasmid DNA. Additional amounts of DNA can be purchased from OriGene with batch-specific, full-sequence verification at a reduced cost. Please contact our customer care team at [custsupport@origene.com](mailto:custsupport@origene.com) or by calling 301.340.3188 option 3 for pricing and delivery.

The molecular sequence of this clone aligns with the gene accession number as a point of reference only. However, individual transcript sequences of the same gene can differ through naturally occurring variations (e.g. polymorphisms), each with its own valid existence. This clone is substantially in agreement with the reference, but a complete review of all prevailing variants is recommended prior to use. [More info](#)

**OTI Annotation:** This clone was engineered to express the complete ORF with an expression tag. Expression varies depending on the nature of the gene.

**Components:** The ORF clone is ion-exchange column purified and shipped in a 2D barcoded Matrix tube containing 10ug of transfection-ready, dried plasmid DNA (reconstitute with 100 ul of water).

**Reconstitution Method:**

1. Centrifuge at 5,000xg for 5min.
2. Carefully open the tube and add 100ul of sterile water to dissolve the DNA.
3. Close the tube and incubate for 10 minutes at room temperature.
4. Briefly vortex the tube and then do a quick spin (less than 5000xg) to concentrate the liquid at the bottom.
5. Store the suspended plasmid at -20°C. The DNA is stable for at least one year from date of shipping when stored at -20°C.

**RefSeq:** [NM\\_001943.5](#)

**RefSeq Size:** 3450 bp

**RefSeq ORF:** 3357 bp

**Locus ID:** 1829

**UniProt ID:** [Q14126](#)

**Cytogenetics:** 18q12.1

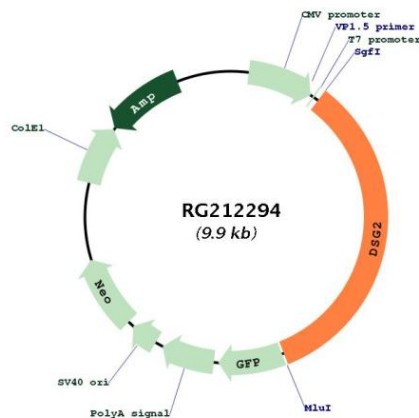
**Domains:** CA

**Protein Families:** Transmembrane

**Protein Pathways:** Arrhythmogenic right ventricular cardiomyopathy (ARVC)

**Gene Summary:** This gene encodes a member of the desmoglein family and cadherin cell adhesion molecule superfamily of proteins. Desmogleins are calcium-binding transmembrane glycoprotein components of desmosomes, cell-cell junctions between epithelial, myocardial, and other cell types. The encoded preproprotein is proteolytically processed to generate the mature glycoprotein. This gene is present in a gene cluster with other desmoglein gene family members on chromosome 18. Mutations in this gene have been associated with arrhythmogenic right ventricular dysplasia, familial, 10. [provided by RefSeq, Jan 2016]

### Product images:



Circular map for RG212294