

Product datasheet for **RG212279**

SEZ6 (NM_178860) Human Tagged ORF Clone

Product data:

Product Type:	Expression Plasmids
Product Name:	SEZ6 (NM_178860) Human Tagged ORF Clone
Tag:	TurboGFP
Symbol:	SEZ6
Synonyms:	BSRPC
Mammalian Cell Selection:	Neomycin
Vector:	pCMV6-AC-GFP (PS100010)
E. coli Selection:	Ampicillin (100 ug/mL)



[View online »](#)

ORF Nucleotide Sequence:

>RG212279 representing NM_178860.

Blue=ORF Red=Cloning site Green=Tag(s)

```

GCTCGTTTAGTGAACCGTCAGAATTTTGTAAACGACTCACTATAGGGCGGCCGGGAATTCGTGACTG
GATCCGGTACCGAGGAGATCTGCCGCCCGGATCGCC
ATGCGCCCGGTAGCCCTGCTGCTCCTGCCCTCGCTGCTGGCGCTCCTGGCTCACGGACTCTCTTTAGAG
GCCCAACCGTGGGAAAGGACAAGCCCCAGGCATCGAGGAGACAGATGGCGAGCTGACAGCAGCCCC
ACACCTGAGCAGCCAGAACGAGGCGTCCACTTTGTCAACAGCCCCACCTTGAAGCTGCTCAACCAC
CACCCGCTGCTTGAGGAATTCCTACAAGAGGGGCTGAAAAAGGGAGATGAGGAGCTGAGGCCAGCACTG
CCCTTCCAGCCTGACCCACCTGCACCCTTACCCEAAGTCCCCTTCCCGCCTGGCCAACCAGGACAGC
CGCCCTGTCTTTACCAGCCCCACTCCAGCCATGGCTGCGGTACCCACTCAGCCCCAGTCCAAGGAGGGA
CCCTGGAGTCCGGAGTCAGAGTCCCCTATGCTTCAATCACAGCTCCCCTACCTCAGGGGCCAGCATG
GCAGTGCCACCCTAGGCCAGGGGAGATGCCAGCACTACACCCCCAGCAGAGCTGGACACCAACC
CAAGAGGGTCTTGAGACATGGGAAGGCCGTGGGTTGCAGAGTTGTGTCCAGGGCGCAGGGATCGGG
ATCCAGGGGACCATCACCTCCTCCAGCTTCAGGAGATGATGAGGAGACCACCACTACCACCACCATC
ATCACCACCACCATCACACAGTCCAGACACCAGGCCCTTGTAGCTGGAATTTCTCAGGCCAGAGGGC
TCTCTGGACTCCCCTACAGACCTCAGCTCCCCACTGATGTTGGCCTGGACTGCTTCTTCTACATCTCT
GTCTACCTGGCTATGGCGTGGAAATCAAGTCCAGAATATCAGCCTCCGGGAAGGGGAGACAGTACT
GTGGAAGGCCCTGGGGGGCCTGACCCACTGCCCTGGCCAACCAGTCTTCTGCTGCGGGGCCAAGTC
ATCCGACGCCCAACCAAGCGGCCCTGAGGTTCCAGAGCCTCCCGCCACCGGCTGGCCCTGGCACC
TTCCATTTCCATTACCAAGCCTATCTCCTGAGCTGCCACTTTCCCGTCTCCAGCTTATGGAGATGTG
ACTGTACCAGCCTCCACCCAGGGGTAGTGCCCGCTTCCATTGTGCCACTGGCTACCAGCTGAAGGGC
GCCAGGCATCTCACCTGTCTCAATGCCACCCAGCCCTTCTGGGATTCAAAGGAGCCCGTCTGACTGCT
GCTTGGCGGGAGTGATCCGCAATGCCACCACCGCCGCATCGTCTCTCCAGGTTCCCGGGCAACTAC
AGCAACAACCTCACCTGTCACTGGCTGTTGAGGCTCCTGAGGGCCAGCGGCTACACCTGCACTTTGAG
AAGTTTTCCCTGGCAGAGGATGATGACAGGCTCATCATTGCAATGGGGACAACGTGGAGGCCCAACA
GTGTATGATTCTATGAGGTGGAATACCTGCCATTGAGGGCCTGCTCAGCTCTGGCAAACACTTCTTT
GTTGAGCTCAGTACTGACAGCAGCGGGCAGCTGCAGGCATGGCCCTGCGCTATGAGGCCTTCCAGCAG
GGCCATTGCTATGAGCCCTTTGCAAATACGGTAACTTCAAGCAGCAGCACACCCACCTACCCTGTGGGT
ACCACTGTGGAGTTCAGCTGCGACCCTGGCTACACCCTGGAGCAGGGCTCCATCATCATGAGTGTGT
GACCCCCAGACCCCAAGTGAATGAGACAGAGCCAGCCTGCCGAGCCGTGTGCAGCGGGGAGATCACA
GACTCGGCTGGCGTGGTACTCTCTCCAACTGGCCAGAGCCCTACGGTCTGTGGCAGGATTGTATCTGG
GGTGTGCATGTGGAAGAGGACAAGGCATCATGCTGGACATCCGAGTGTGCGCATAGGCCCTGGTGTAT
GTGCTTACCTTCTATGATGGGATGACCTGACGGCCCGGGTCTGGGCCAGTACTCAGGGCCCCGTAGC
CACTTCAAGCTCTTTACCTCCATGGCTGATGTCACCATCAGTCCAGTCCGACCCCGGGACCTCAGTG
CTGGGCTACCAGCAGGGCTTCGTCATCCACTTCTTTGAGGTGCCCGCAATGACACATGTCCGGAGCTG
CCTGAGATCCCCAATGGCTGGAAGAGCCATCGCAGCCTGAGCTAGTGCACGGCACCGTGGTCACTTAC
CAGTGTACCCCTGGCTACCAGGTAGTGGATCCAGTGTCTCATGTGCCAGTGGACCTAACTTGGAGT
GAGGACCTGCCCTCATGCCAGAGGGTACTTCTGCCACGATCCTGGAGATGTGGAGACACAGCCGACGC
CTCATATCCAGCCCCAAGTTTCCCGTGGGGGCCACCGTGCAATATATCTGTGACCAGGGTTTTGTGCTG
ATGGGCAGCTCCATCCTCACCTGCCATGATCGCCAGGCTGGCAGCCCCAAGTGGAGTGACCGGGCCCT
AAATGTCTCCTGGAACAGCTCAAGCCATGCCATGGTCTCAGTGCCCTGAGAATGGTGCCGAAAGTCTT
GAGAAGCAGCTACACCCAGCAGGGGCCACCATCCACTTCTCGTGTGCCCTGGCTATGTGCTGAAGGGC
CAGGCCAGCATCAAGTGTGTGCTGGGCACCCCTCGCATTGGAGTGACCCCCACCCATCTGTAGGGCT
GCCTCTCTGGATGGGTTCTACAACAGTCGCAGCCTGGATGTTGCCAAGGCACCTGCTGCCTCCAGCACC
CTGGATGTGCCACATTGCAGTGCCATCTTCTTCCACTGGTGGCGATGGTGTGTTGGTAGGAGGT
GTATACTTCTACTTCTCCAGGCTCCAGGAAAAAGCTCCCTGCAGCTGCCCGCCCCCGCCCCGCCCC
TACAACCGCATTACCATAGAGTCAGCGTTTGACAATCCAACCTACGAGACTGGATCTCTTCTTTGCA
GGAGACGAGAGAATA
ACGCGTACGCGGCCGCTCGAG - GFP Tag - GTTTAAAC
    
```

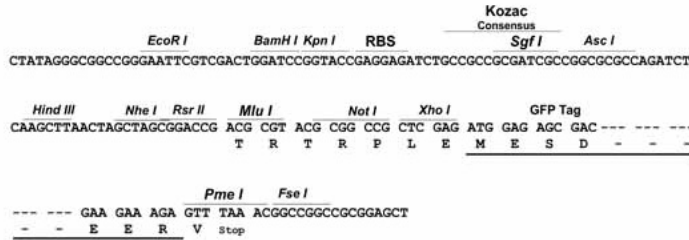
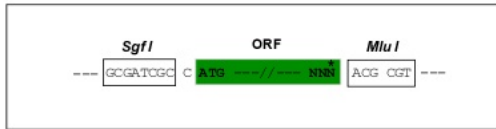
Protein Sequence: >Peptide sequence encoded by RG212279
 Blue=ORF Red=Cloning site Green=Tag(s)

MRPVALLLLPSLLALLAHLGSLLEAPTGVKQAPGIEETDGELTAAPTPEQPERGVHFVTTAPTLKLLNH
 HPLLEEFLEQGLEKGDLELRPALPFQDPPAPFTPSPLPRLANQDSRPVFTSPTPAMAAVPTQPQSKG
 PWSPESESPMLRITAPLPPGSPMAVPTLGPGEIASTTPPSRAWPTQEGPGDMGRPWVAEVSQGAGIG
 IQGTITSSSTASGDDEETTTTTTIIITTTITTVQTPGPCSWNFSGPEGLDSPTDLSSPTDVLDCFFYIS
 VYPGYGVEIKVQNISLREGETVTVVEGLGGPDPLPLANQSFLLRGQVIRSPHQAALRFQSLPPPAGPGT
 FHFHYQAYLLSCHFRRPAYGDVTVTSLHPGGSARFHCATGYQLKGARHLTCLNATQPFWDSKEPVCIA
 ACGGVIRNATTGRIVSPGFPGNYSNNLTCHWLEAPEGQRLHLHFEKVSLEAEDDRLIIRNGDNVEAPP
 VYDSYEVEYLPVIEGLLSSGKHFFVELSTDSSGAAAGMALRYEAFQQGHCEYEPFKYGNFSSSTPTYPVG
 TTVEFSCDPGYTLEQGSIIIECVDPHPQWNETEPACRAVCSGEITDSAGVVLSPNWPEPYGRGQDCIW
 GVHVEEDKRIMLDIRVLRIGPGDVLTFYDGDLDARVLGQYSGPRSHFKLFTSMADVTIQFQSDPGTSV
 LGYQQGFVIHFFEVPRNDTCPELPEIPNGWKSQPELVHGTVVTYQCYPGYQVVGSSVLMCQWDLTWS
 EDLPSCQRVTSCHDPGDVEHSRRLISSPKFPVGATVQYICDQGFVLMGSSILTCHDRQAGSPKWSDRAP
 KCLLEQLKPCCHGLSAPENGARSPEKQLHPAGATIHFSAPGYVLKGQASIKCVPGHPSHSDPPPICRA
 ASLDGFYNSRSLDVAKAPAASSTLDAAHIAAAIFLPLVAMVLLVGGVYFYFRLQKQSSQLPRRPRR
 YNRITIESAFDNPTYETGSLSFAGDERI
 TRTRPLEMESDESGLPAMEIECRITGTLNGVEFELVGGEGTPEQGRMTNKMSTKGALTFSPYLLSHV
 MGYGFYHFGTYPSGYENPFLHAINNGGYNTRIEKYEDGGVLHVSFSYRYEAGRVIGDFKVMGTGFPED
 SVIFTDKIIRSNATVEHLHPMGDNDLDGSFTRTFSLRDGGYSSVVDSHMHFKSAIHPSILQNGGPMFA
 FRRVEEDHSNTELGIVEYQHAFKTPDADAGEERV

Restriction Sites: SgfI-MluI

Cloning Scheme:

Cloning sites used for ORF Shutting:

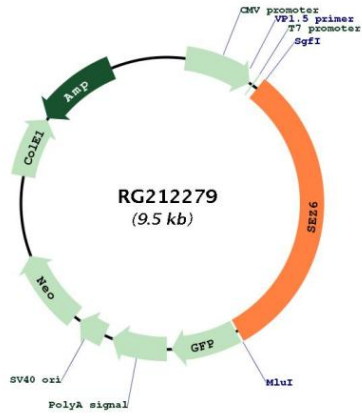


ACCN: NM_178860

ORF Size: 2982 bp

OTI Disclaimer:	The molecular sequence of this clone aligns with the gene accession number as a point of reference only. However, individual transcript sequences of the same gene can differ through naturally occurring variations (e.g. polymorphisms), each with its own valid existence. This clone is substantially in agreement with the reference, but a complete review of all prevailing variants is recommended prior to use. More info
OTI Annotation:	This clone was engineered to express the complete ORF with an expression tag. Expression varies depending on the nature of the gene.
Components:	The ORF clone is ion-exchange column purified and shipped in a 2D barcoded Matrix tube containing 10ug of transfection-ready, dried plasmid DNA (reconstitute with 100 ul of water).
Reconstitution Method:	<ol style="list-style-type: none">1. Centrifuge at 5,000xg for 5min.2. Carefully open the tube and add 100ul of sterile water to dissolve the DNA.3. Close the tube and incubate for 10 minutes at room temperature.4. Briefly vortex the tube and then do a quick spin (less than 5000xg) to concentrate the liquid at the bottom.5. Store the suspended plasmid at -20°C. The DNA is stable for at least one year from date of shipping when stored at -20°C.
RefSeq:	NM_178860.5
RefSeq Size:	4306 bp
RefSeq ORF:	2985 bp
Locus ID:	124925
UniProt ID:	Q53EL9
Cytogenetics:	17q11.2
Protein Families:	Druggable Genome, Transmembrane
MW:	107.4 kDa
Gene Summary:	The protein encoded by this gene is thought to contain five cysteine-rich motifs that are similar to sushi domains, as well as two domains similar to the amino terminal half of the CUB (for complement C1r/C1s, Uegf, Bmp1) domain. Mutations in this gene have been associated with febrile seizures. [provided by RefSeq, Jul 2016]

Product images:



Circular map for RG212279