

Product datasheet for **RG212275**

SCN3A (NM_001081677) Human Tagged ORF Clone

Product data:

Product Type:	Expression Plasmids
Product Name:	SCN3A (NM_001081677) Human Tagged ORF Clone
Tag:	TurboGFP
Symbol:	SCN3A
Synonyms:	DEE62; EIEE62; FFEVF4; NAC3; Nav1.3
Mammalian Cell Selection:	Neomycin
Vector:	pCMV6-AC-GFP (PS100010)
E. coli Selection:	Ampicillin (100 ug/mL)
ORF Nucleotide Sequence:	>RG212275 representing NM_001081677 Red=Cloning site Blue=ORF Green=Tags(s)

TTTTGTAATACGACTCACTATAGGGCGGCCGGAATTCGTCGACTGGATCCGGTACCGAGGAGATCTGCC
GCC**CGATCGCC**

ATGGCACAGGCACTGTTGGTACCCCAAGGACCTGAAAGCTTCGCCTTTTACTAGAGAATCTCTTGCTG
CTATCGAAAAACGTGCTGCAGAAGAGAAAGCAAGAAGCCAAAAAGGAACAAGATAATGATGATGAGAA
CAAACCAAGCCAAATAGTGACTTGAAGCTGGAAAGAACCTTCCATTTATTTATGGAGACATTCCTCCA
GAGATGGTGTGAGAGCCCTGGAGGACCTGGATCCCTACTATATCAATAAGAAAACCTTTTATAGTAATGA
ATAAAGGAAAGGCAATTTCCGATTCAGTGCCACCTCTGCCTGTATATTTAACTCCACTAAACCTGT
TAGGAAAATTGCTATCAAGATTTTGGTACATTCCTTATTCAGCATGCTTATCATGTGCACATTTTGACC
AACTGTGTATTTATGACCTTGAGCAACCTCCTGACTGGACAAAGAATGTAGAGTACACATTCACCTGGAA
TCTATACCTTTGAGTCACTTATAAAAACTTTGGCAAGAGGGTTTTGCTTAGAAGATTTTACGTTTCTTCG
TGATCCATGGAACCTGGCTGGATTCAGTGTCTTGTGATGGCGTATGTAACAGAAATTTGTAAGCCTAGGC
AATGTTTCAGCCCTTCGAACTTTAGAGTCTTGAGAGCTCTGAAAACCTTTCTGTAATTCAGGTTTAA
AGACCATTTGGGGGCCCTGATCCAGTCGGTAAAGAAGCTTTCTGATGTGATGATCTGACTGTGTTCTG
TCTGAGCGTGTTGCTCTCATTGGGCTGCAGCTGTTTATGGCAATCTGAGGAATAAATGTTTGCAGTGG
CCCCAAGCGATTCTGCTTTTGAACCAACACCCTTCTACTTTAATGGCACAATGGATTCAAATGGGA
CATTTGTTAATGTAACAATGAGCACATTTAACTGGAAGGATTACATTGGAGATGACAGTCACTTTTATGT
TTTGGATGGGCAAAAAGACCCTTTACTCTGTGGAATGGCTCAGATGCAGGCCAGTGTCCAGAAGGATAC
ATCTGTGTGAAGGCTGGTCGAAACCCCACTATGGCTACACAAGCTTTGACACCTTTAGCTGGGCTTTCC
TGTCTCTATTTGACTCATGACTCAAGACTACTGGGAAAATCTTACCAGTTGACATTACGTGCTGCTGG
GAAAACATACATGATATTTTTTGTCTGGTCAATTTCTTGGGCTCAATTTATTTGGTGAATTTGATCCTG
GCTGTGGTGGCCATGGCCTATGAGGAGCAGAATCAGGCCACCTTGAAGAAGCAGAACAAAAAGAGGCCG
AATTTGAGCAGATGCTCGAACAGCTTAAAAAGCAACAGGAAGAAGCTCAGGCAGTTGCGGCAGCATCAGC
TGCTTCAAGATTTAGTGAATAGTGGGTTAGGAGAGCTGTTGGAAGTTCTTCAGAAGCATCAAAG



[View online »](#)

TTGAGTTCAAAAAGTGCTAAAGAATGGAGGAACCGAAGGAAGAAAAGAAGACAGAGAGACACCTTGAAG
 GAAACAACAAAGGAGAGAGAGACAGCTTCCCAAATCCGAATCTGAAGACAGCGTCAAAGAAGCAGCTT
 CCTTTTCTCCATGGATGGAAACAGACTGACCAGTGACAAAAAATCTGCTCCCCTCATCAGTCTCTCTTG
 AGTATCCGTGGCTCCCTGTTTTCCCAAGACGCAATAGCAAAACAAGCATTTTCAGTTTCAGAGGTGGG
 CAAAGGATGTTGGATCTGAAAATGACTTTGCTGATGATGAACACAGCACATTTGAAGACAGCGAAAGCAG
 GAGAGACTCACTGTTTGTCCCGCACAGACATGGAGAGCGACGCAACAGTAACGGCACCACCACAGAAACG
 GAAGTCAGAAAGAGAAGGTTAAGCTCTTACCAGATTTCAATGGAGATGCTGGAGGATTCCTCTGGAAGGC
 AAAGAGCCGTGAGCATAGCCAGCATTCTGACCAACACAATGGAAGAACTTGAAGAATCTAGACAGAAATG
 TCCGCCATGCTGGTATAGATTTGCCAATGTGTTCTTGATCTGGGACTGCTGTGATGCATGGTTAAAAAGTA
 AAACATCTTGGAATTAATTGTTATGGATCCATTTGTTGATCTTGCCATCACTATTTGCATTGTCTTAA
 ATACCCTCTTATGGCCATGGAGCACTACCCCATGACTGAGCAATTCAGTAGTGTGTTGACTGTAGGAAA
 CCTGGTCTTTACTGGGATTTTACAGCAGAAAATGGTTCTCAAGATCATTGCCATGGATCCTTATTACTAT
 TTCCAAGAAGGCTGGAATATCTTTGATGGAATTATTGTCAGCCTCAGTTTAAATGGAGCTTGGTCTGTCAA
 ATGTGGAGGGATTGTCTGTACTGCGATCATTGAGACTGCTTAGAGTTTTCAAGTTGGCAAAATCCTGGCC
 CACACTAAATATGCTAATTAAGATCATTGGCAATTCTGTGGGGCTCTAGGAAACCTCACCTTGGTGTG
 GCCATCATCGTCTTCATTTTTGCTGTGGTGGCATGCAGCTCTTTGGTAAGAGCTACAAAGAATGTGTCT
 GCAAGATCAATGATGACTGTACGCTCCCACGGTGGCACATGAACGACTTCTTCCACTCCTTCTGATTGT
 GTTCCGCGTGCTGTGGAGAGTGGATAGAGACCATGTGGGACTGTATGGAGGTGCTGGCCAAACCATG
 TGCCTTATTGTTTTATGTTGGTTCATGGTTCATTGGAAACCTTGTGGTCTGAACCTCTTCTGGCCTTAT
 TGTGAGTTTCATTTAGCTCAGACAACCTTGCTGCTACTGATGATGACAATGAAATGAATAATCTGCAGAT
 TGCAGTAGGAAGAATGCAAAAGGGAATTGATTATGTGAAAAAAGATGCGGGAGTGTTCAAAAAGCC
 TTTTTAGAAAAGCCAAAAGTTATAGAAAATCCATGAAGCAATAAGATAGACAGCTGCATGTCCAATAATA
 CTGGAATTGAAAATAGCAAAAGAGCTTAATTATCTTAGAGATGGGAATGGAACCACCAGGTGTAGGTAT
 TGGAAAGCAGTGTGAAAAATACGTAATCGATGAAAATGATTATATGTCTTCAATAAACAACCCCGCCTC
 ACCGTCACAGTGCCAATTGCTGTTGGAGAGTCTGACTTTGAAAACCTAAATACTGAAGAGTTCAGCAGTG
 AGTCAGAACTAGAAGAAAGCAAGAGAAAATTAATGCAACCAGCTCATCTGAAGGAAGCAGATTGATGT
 TGTCTACCCCGAGAAGGTGAACAAGCTGAAACTGAACCCGAAGAAGACCTTAAACCGGAAGCTTGT
 ACTGAAGGATGTATTAAGGTTTCCATTCTGTCAAGTAAGTACAGAAGAAGGCAAAAGGGAAGATCTGGT
 GGAATCTCGAAAAACCTGCTACAGTATTGTTGAGCACAACCTGGTTTGGACTTTTATTGTTCATGAT
 CCTTCTCAGTAGTGGTGCATTGGCCTTTGAAGATATATACATTGAACAGCGAAAGACTATCAAAACCATG
 CTAGAATATGCTGACAAAGTCTTACCTATATATTCTTCTGAAATGCTTCTCAATGGGTTGCTTATG
 GATTTCAAACATATTTCACTAATGCCTGGTGTGGCTAGATTTCTTGATGTTGATGTTTCTTTGGTTAG
 CCTGGTAGCCAATGCTCTTGGCTACTCAGAACCTCGGTGCCATCAATCATTACGGACATTAAAGAGCTTTA
 AGACCTCTAAGAGCCTTATCCCGGTTTGAAGGCATGAGGGTGGTGTGAATGCTCTTGTGGAGCAATTC
 CCTCTATCATGAATGTGCTGTTGGTCTGTCTCATCTTCTGGTTGATCTTTAGCATCATGGGTGTGAATTT
 GTTTGCTGGCAAGTCTACCACTGTGTTAACATGACAACGGGTAAACATGTTTGACATTAGTGATGTTAAC
 AATTTGAGTGACTGTGAGGCTCTGGCAAGCAAGCTCGGTGAAAAACGTGAAAGTAACTTTGATAATG
 TTGGCGCTGGCTATCTTGCACTGCTTCAAGTGGCCACATTTAAAGGCTGGATGGATATTATGTATGCAGC
 TGTGATTACAGAGATGTTAAACTTCAGCCTGTATGAAGAAAATCTGTACATGATTTATACTTTGTC
 ATCTTTATCATCTTTGGGTCATTTCTTCACTCTGAATCTATTCTTGGTGTGATCATAGATAACTTCAACC
 AGCAGAAAAAGAAGTTTGGAGGTCAAGACATCTTTATGACAGAGGAACAGAAAAAATATTACAATGCAAT
 GAAGAACTTGGATCCAAGAAACCTCAGAAACCCATACCTCGCCAGCAAAACAATTCGAAGGAATGGTC
 TTTGATTTTGAACCAGACAAGTCTTTGATATCAGCATCATGATCCTCATCTGCCTCAACATGGTACCA
 TGATGGTGGAAACGGATGACCAGGGCAATACATGACCCTAGTTTTGTCCCGGATCAACCTAGTGTTCAT
 TGTTCTGTTCACTGGAGAATTTGTGCTGAAGCTCGTCTCCCTCAGACACTACTACTTCACTATAGGCTGG
 AACATCTTTGACTTTGTGGTGGTATTCTCCATTGTAGGTATGTTTCTGGCTGAGATGATAGAAAAGT
 ATTTTGTGCTCCCTACCTTGTCCGAGTATCCGTCTTGGCAGGATTGGCCGAATCTACGTCTGATCAA
 AGGAGCAAAGGGATCCGCACGCTGCTCTTTGCTTTGATGATGTCCCTTCTGCGTTGTTTAAACATCGGC
 CTCTGCTCTTCTGGTTCATGTTTATCTATGCCATCTTTGGGATGTCCAACCTTGCCTATGTTAAAAAGG
 AAGCTGGAATTGATGACATGTTCAACTTTGAGACCTTTGGCAACAGCATGATCTGCTTGTCCAAATTAC
 AACCTCTGCTGGCTGGGATGGATTGCTAGCACCTATTCTTAATAGTGCACCACCCGACTGTGACCCTGAC
 ACAATTCACCCTGGCAGCTCAGTTAAGGGAGACTGTGGGAACCCATCTGTTGGGATTTCTTTTTTGTCA

GTTACATCATCATATCCTTCCTGGTTGTGGTGAACATGTACATCGCGGTCATCCTGGAGAACTTCAGTGT
 TGCTACTGAAGAAAGTGCAGAGCCCCTGAGTGAGGATGACTTTGAGATGTTCTATGAGGTTTGGGAAAAG
 TTTGATCCCGATGCGACCCAGTTTATAGAGTCTCTAAACTCTCTGATTTTGACAGCTGCCCTGGATCCTC
 CTCTTCTCATAGCAAAACCAACAAAGTCCAGCTTATTGCCATGGATCTGCCATGGTCACTGAGTGGTACCG
 GATCCACTGTCTTGATATTTTATTTGCCTTTACAAAGCGTGTTTTGGGTGAGAGTGGAGAGATGGATGCC
 CTTCCGAATACAGATGAAGACAGGTTTATGGCATCAAACCCCTCCAAAGTCTCTTATGAGCCTATTACAA
 CCACTTTGAAACGTAACAAGAGGAGGTCTGCCGCTATCATTACGCGTAATTTTCAGATGTTATCTTTT
 AAAGCAAAGGTTAAAAAATATATCAAGTAACTATAACAAAGAGGCAATTAAGGGGAGGATTGACTTACCT
 ATAAAAACAGACATGATTATTGACAAACTAAATGGGAACTCCACTCCAGAAAAACAGATGGGAGTTCCT
 CTACCACCTCTCCTCCTTCTATGATAGTGAACAAAACAGACAAGAAAAAGTTTGAGAAAAGACAAACC
 AGAAAAAGAAAGCAAAGGAAAAGAGGTCAGAGAAAATCAAAG

ACGCGTACGCGGGCCGCTCGAG - GFP Tag - GTTTAA

Protein Sequence:

>RG212275 representing NM_001081677
 Red=Cloning site Green=Tags(s)

MAQALLVPPGPESFRLFTRESLAAIEKRAAEKAKKPKKEQDNDENKPKPNSDLEAGKNLPIYGDIPP
 EMVSEPLELDPYYINKKTFIVMNKGKAIFFRSATSALYILTPLNVRKIAIKILVHSLFSLMIMCTILT
 NCVFMTLSNPPDWTKNVEYFTFTGIYTFESLIKILARGFCLEDFTLRDPWNWLDVSVIVMAYVTEFVSLG
 NVSALRTRFRVLRALKTISVIPGLKTIVGALIQSVKKLSDVMILTVFCLSVFALIGLQLFMGNLRNKCLQW
 PPSDSAFETNTTSYFNGTMDSNFTFVNVMTSTFNWKDYIGDSSHVYVLDGQKDLLCGNGSDAGQCPEGY
 ICVKAGRPNPYGYTSFDTFSWAFSLFLRLMTQDYWENLYQLTLRAAGKTYMIFVFLVIFLGSFYLVNLI
 AVVAMAYEEQNQATLEEAQEKEAEFQQMLEQLKKQEEAQAVAAAASAASRDFSGIIGLGELESSEASK
 LSSKSAKEWRNRKRQRQREHLEGNNGERDSFPKSESEDSVKRSSFLSMDGNRLTSDKKFCSPHQSL
 SIRGSLFSPRRNSKTSIFSFRGRAKDVGSENDFADEHSTFEDSESRRDLSLVPHRHGERRNSNGTTTET
 EVRKRRLSSYQISMEDLESSGRQRAVSIASILTNTMEELEESRQKCPPCWYRFANVFLIWDCCDAWLK
 KHLVNLIVMDPFVDLAITICIVLNTLFMAMEHYPMTEQFSSVLTVGNLVFTGIFTAEMVLKIIAMPDYYY
 FQEGWNIFDGIIVSLSLMELGLSNVEGLSVLRSFRLLRVFKLAKSWPTLNMLIKIIGNSVGLGNLTLVL
 AIIVVFIFAVVGMQLFGKSYKECVCKINDDCTLRWHMNDFFHSFLIVFRVLCGEWIETMWDCEVAGQTM
 CLIVFMLVMVIGNLVVLNLFALLLSSFSSDNLAAATDDDNEMNNLQIAGGRMQKIDYVKNKMRFCQKA
 FFRKPKVIEIHEGNKIDSCSNNTGIEISKELNYLRDNGTTSVGTGSSVEKYVIDENDYMSFINNPSL
 TVTVPIAVGESDFENLNTTEEFSSSESELESKEKLNATSSSEGSTVDVVLPREGEQAETEPEEDLKPEACF
 TEGCIKKFPFCQVSTEEGKGKIWWNLRKTCYSIVEHNFETFIIVMILLSGALAFEDIYIEQRKTIKTM
 LEYADKVFTYIFILEMLLKWVAYGFQTYFTNAWCWLDLIVDVSLVSLVANALGYSELGAIKSLRTRLRAL
 RPLRALSRFEGMRVVVNLVGAIPSIMNVLVCLIFWLIFSIMGVNLFAGKFYHCVNMTTGNMFDISDVN
 NLSDCQALGKQARWKNVNFNDVNGAGYLALLQVATFKGWMDIMYAAVDSRDVKLPVVEENLYMYLYFV
 IFIIFGSFRTLNLFIGVIIDNFNQKKKFGGQDIFMTEEQKKYNNAMKLGSKKPQKPIPRPANKFQGMV
 FDFVTRQVFDISIMILICLNMVTMMVETDDQGYMTLVLSRINLVFIVLFTGEFVLKLVSLRHYYFTIGW
 NIFDFVVVILSIVGMFLAEMIEKYFVSPTLFRVIRLARIGRILRLIKGAKGIRTLFALMMSLPALFNIG
 LLLFLVMFIYAIFGMSNFAYVKEAGIDDMFNFEFTFGNSMICLFQITTSAGWDGLLAPILNSAPPDCDPD
 TIHPGSSVKGDCGNPSVGIFFFVSYIIISFLVVVNMVIAVILENFSVATEESAEPLEDDFEMFYEVEWKE
 FDPDATQFIEFSKLSDFAAALDPPLLIAPNKVQLIAMDLPMVSGDRIHCLDILFAFTKRVLGESGEMDA
 LRIQMEDRFMASNPSKVSYPEITTTLKRKQEEVSAIIQRNFRCYLLKQRLKNISSNYNKEAIKGRIDL
 IKQDMIIDKLNNGNSTPEKTDGSSSTTSPPSYDSVTKPDKEKFEKDKPEKESKGEVRENQK

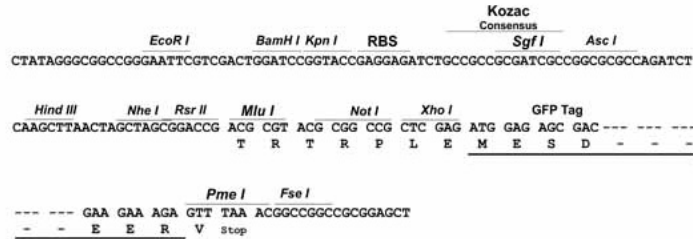
TRTRPLE - GFP Tag - V

Restriction Sites:

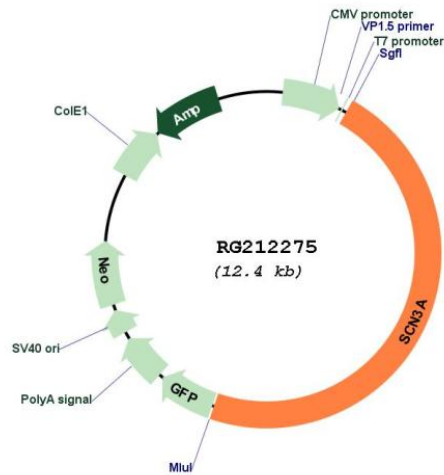
Sgfl-Mlul

Cloning Scheme:

Cloning sites used for ORF Shutting:



Plasmid Map:



ACCN: NM_001081677
 ORF Size: 5853 bp

OTI Disclaimer:	<p>Due to the inherent nature of this plasmid, standard methods to replicate additional amounts of DNA in E. coli are highly likely to result in mutations and/or rearrangements. Therefore, OriGene does not guarantee the capability to replicate this plasmid DNA. Additional amounts of DNA can be purchased from OriGene with batch-specific, full-sequence verification at a reduced cost. Please contact our customer care team at custsupport@origene.com or by calling 301.340.3188 option 3 for pricing and delivery.</p> <p>The molecular sequence of this clone aligns with the gene accession number as a point of reference only. However, individual transcript sequences of the same gene can differ through naturally occurring variations (e.g. polymorphisms), each with its own valid existence. This clone is substantially in agreement with the reference, but a complete review of all prevailing variants is recommended prior to use. More info</p>
OTI Annotation:	<p>This clone was engineered to express the complete ORF with an expression tag. Expression varies depending on the nature of the gene.</p>
Components:	<p>The ORF clone is ion-exchange column purified and shipped in a 2D barcoded Matrix tube containing 10ug of transfection-ready, dried plasmid DNA (reconstitute with 100 ul of water).</p>
Reconstitution Method:	<ol style="list-style-type: none">1. Centrifuge at 5,000xg for 5min.2. Carefully open the tube and add 100ul of sterile water to dissolve the DNA.3. Close the tube and incubate for 10 minutes at room temperature.4. Briefly vortex the tube and then do a quick spin (less than 5000xg) to concentrate the liquid at the bottom.5. Store the suspended plasmid at -20°C. The DNA is stable for at least one year from date of shipping when stored at -20°C.
RefSeq:	NM_001081677.2
RefSeq Size:	8994 bp
RefSeq ORF:	5856 bp
Locus ID:	6328
UniProt ID:	Q9NY46
Cytogenetics:	2q24.3
Protein Families:	Druggable Genome, Ion Channels: Sodium, Transmembrane
Gene Summary:	<p>Voltage-gated sodium channels are transmembrane glycoprotein complexes composed of a large alpha subunit with 24 transmembrane domains and one or more regulatory beta subunits. They are responsible for the generation and propagation of action potentials in neurons and muscle. This gene encodes one member of the sodium channel alpha subunit gene family, and is found in a cluster of five alpha subunit genes on chromosome 2. Multiple transcript variants encoding different isoforms have been found for this gene. [provided by RefSeq, Jul 2008]</p>