

## Product datasheet for **RG212231**

### SMARCA6 (HELLS) (NM\_018063) Human Tagged ORF Clone

#### Product data:

Product Type:	Expression Plasmids
Product Name:	SMARCA6 (HELLS) (NM_018063) Human Tagged ORF Clone
Tag:	TurboGFP
Symbol:	SMARCA6
Synonyms:	ICF4; LSH; Nbla10143; PASG; SMARCA6
Mammalian Cell Selection:	Neomycin
Vector:	pCMV6-AC-GFP (PS100010)
E. coli Selection:	Ampicillin (100 ug/mL)



[View online »](#)

ORF Nucleotide  
Sequence:

>RG212231 representing NM\_018063  
Red=Cloning site Blue=ORF Green=Tags(s)

TTTTGTAATACGACTCACTATAGGGCGGCCGGGAATTCGTCGACTGGATCCGGTACCGAGGAGATCTGCC  
GCC**CGGATCGCC**

ATGCCAGCGGAACGGCCCGGGCAGCGCGGCTCGGAGGCTCCAGCAATGGTTGAACAACCTGGACACTG  
CTGTGATTACCCCGGCCATGCTAGAAGAGGAAGAACAGCTTGAAGCTGCTGGACTAGAGAGAGAGCGGAA  
GATGCTGGAAAAGGCTCGCATGTCTTGGGATAGAGAGTCGACAGAAATTCGGTACCGTAGACTTCAACAT  
TTGCTTGAAAAAAGCAATATATACTCCAATTTTTATTGACGAAAATGGAACAGCAACAATTAGAGGAAC  
AGAAGAAGAAAAGAAAATTTGGAGAGAAAAAGGAGTCTTTAAAAGTTAAAAAGGGTAAAAATTC AATTGA  
TGCAAGTGAAGAGAAGCCAGTTATGAGGAAAAAAGAGGAAGAGAAGTGAATCATACAATATTTTCAGAG  
GTCATGTCAAAGAGGAAATTTGTCTGTGGCTAAAAAATAAAAAGGAGAATGAGGATGAAAACCTCT  
CCTCTACTAATCTCTGTGTGGAAGATCTTCAGAAAAATAAAGATTCGAATAGTATAATTAAGATAGATT  
GTCTGAAACGGTTAGGCAGAATACTAAATCTTTTTTTGACCCAGTCCGGAAGTGAATGGTCAGCCAGTA  
CCTTTTCAACAACCAAAGCACTTCACTGGAGGAGTGATGCGATGGTACCAAGTAGAAGGCATGGAATGGC  
TTAGGATGCTTTGGGAAAATGGAATTAATGGCATTITAGCAGATGAAATGGGATTGGGTAAGACAGTTCA  
GTGCATTGCTACTATTGCATTGATGATTCAGAGAGGAGTACCAGGACCTTTTCTGTCTGTGGCCCTTTG  
TCTACACTTCTAACTGGATGGCTGAATTCAAAAGATTTACACCAGATATCCCTACAATGTTATATCATG  
GAACCCAGGAGGAACGTCAAAAATTTGGTAAAGAAATATTTACAACGGAAGGGACTTTGCAGATTCATCC  
TGTGGTAAATCACGTCATTTGAAATAGCCATGAGAGACCGAAATGCGTTACAGCATTGCTATTGGAATAC  
TTAATAGTAGATGAAGGACACAGGATTAAGAATATGAAGTGCCGTCTAATCAGGGAGTTAAAACGATTCA  
ATGCTGATAACAACTTCTTTTGACTGGTACTCCCTTGCAAACAATTTATCAGAACTTTGGTCATTGCT  
AAACTTTTTGTTGCCAGATGATTTTGTGACTTGAAAAGCTTTGAGTCTTGGTTTGACATCACTAGTCTT  
TCTGAACTGCTGAAGATATTATTGCTAAAGAAAGAGAACAGAATGTATTGCATATGCTGCACCAGATTT  
TAACACCTTTCTATTGAGAAGACTGAAGTCTGATGTTGCTCTTGAAGTCTCTCAAACGAGAAGTAGT  
CGTTTATGCTCCACTTTCAAAGAAGCAGGAGATCTTTTATACAGCCATTGTGAACCGTACAATTGCAAAAC  
ATGTTTGGATCCAGTGAGAAAGAAACAATTGAGTTAAGTCTACTGGTCGACCAAACGACGAACTAGAA  
AATCAATAAATTACAGCAAAATAGATGATTTCCCTAATGAATTGGAAAACTGATCAGTCAAATACAGCC  
AGAGGTGGACCGAGAAAGAGCTGTTGTGGAAGTGAATATCCCTGTAGAATCTGAAGTTAATCTGAAGCTG  
CAGAATAAATGATGCTACTTCGTAATGTTGTAATCATCCATATTTGATTGAATATCCTATAGACCCTG  
TTACACAAGAATTAAGATCGATGAAGAATTGGTAACAAATCTGGGAAGTCTTGATTTTGGATCGAAT  
GCTGCCAGAACTAAAAAAGAGGTCAAGGTGCTGCTTTTTTCACAAATGACAAGCATGTTGGACATT  
TTGATGGATTACTGCCATCTCAGAGATTTCAACTTCAGCAGGCTTGATGGGTCCATGCTTACTCAGAGA  
GAGAAAAAACAATGCACAGCTTCAACACGGATCCAGAGGTGTTTATCTTCTTAGTGAGTACACGAGCTGG  
TGGCCTGGGCATTAATCTGACTGCAGCAGATACAGTTATCATTTATGATAGTGATTGGAACCCCAAGTGC  
GATCTTCAGGCCAGGATAGATGTCATAGAATTGGTCAGACAAAGCCAGTTGTTGTTTATCGCCTTGTTA  
CAGCAAACTACTATCGATCAGAAAATTTGTGGAAGAGCAGCTGCTAAAAGGAACTGGAAAAGTTGATCAT  
CCATAAAAAATCATTTCAAAGGTGGTCAGTCTGGATTAATCTGTCTAAGAATTTCTTAGATCCTAAGGAA  
TTAATGGAATTATTAATCTAGAGATTATGAAAGGGAATAAAAAGGATCAAGAGAGAAGGTCATTAGTG  
ATAAAGATCTAGAGTTGTTGTTAGATCGAAGTGTCTTATTGATCAAATGAATGCTTCAGACCAATTA  
AGAGAAGATGGGATATTCAAGATATTAGAAAATCTGAAGATTCAGTCTGAATGTTTGT

**ACCGT**ACGCGGCCGCTCGAG - GFP Tag - GTTTAA

**Protein Sequence:** >RG212231 representing NM\_018063  
 Red=Cloning site Green=Tags(s)

```

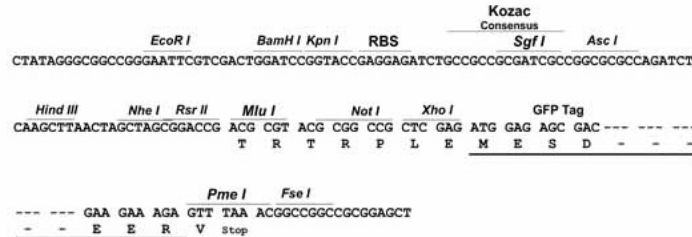
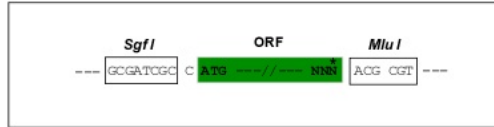
MPAERPAGSGGSEAPAMVEQLDTAVITPAMLEEEQLEAAGLERERKMLEKARMSWDRESTEIRYRRLQH
LLEKSNIYSKFLLTkMEQQLEEQKKKEKLERKKEslKvKKGKNSIDASEEKpVMRKKRGREDESYNISE
VMSKEEILSVAKKNKKENEDENSSSTNLCVEDLQKNKDSNSIIKDRLSEtVRQNTKFFFDpVRKcNGQpV
PFQqPKHFTGGVMRWYQVEGMEWLRMLWENgINGILADEMGLGKTvQCIATIALMIQRGvPGpFLVCGpL
STLPNWMAEFKRfTPDIPtMLYHGtQEERQKLVRNIYKRKGTlQIHPVVITsFEIAMRDRNALQHcYwKY
LIvDEGHRiKNMKcRLIReLKRfNADNKLLLtGTPLQNNLSELWslLNfLLPDvFDDLkSFESWfDITsL
SETAEIiIAKEREQnVLHMLHqILtPFLRRlKSDVALEvPPKREvVVyAPLsKKQeIFyTAIVNRTIAN
MFGSSEKETIElSPTGRPKRRTRKSINYSKIDDFPNELEKLISQIQPEVDRERAVVEVNIPVESEVNLKL
QNIMMLLRKCCNHPYLIEYPIDPVTQEFKIDEELVTNSGFLILDRMLPELKKRGHKVLLFSQMTSMLDI
LMDYCHLRDFNfSRLDGMSYSEREKNMHSfNTDPEVfIFLVSTRAGGLGINLTAADTVIIYDSWNPQS
DLQAQDRCHRIGQTKPVVVYRLVTANTIDQKIVERAAAKRKLEKLIiHKNHfKGGQsGLNLskNfLDPKE
LMELLKSRDYEREIKGSREKVISDKDLELLLDRSDLIDQMNASGPiKEKMGIFkILENSEDSSPECLF
  
```

TRTRPLE - GFP Tag - V

**Restriction Sites:** Sgfl-MluI

**Cloning Scheme:**

Cloning sites used for ORF Shutting:



- ACCN:** NM\_018063
- ORF Size:** 2514 bp
- OTI Disclaimer:** The molecular sequence of this clone aligns with the gene accession number as a point of reference only. However, individual transcript sequences of the same gene can differ through naturally occurring variations (e.g. polymorphisms), each with its own valid existence. This clone is substantially in agreement with the reference, but a complete review of all prevailing variants is recommended prior to use. [More info](#)
- OTI Annotation:** This clone was engineered to express the complete ORF with an expression tag. Expression varies depending on the nature of the gene.
- Components:** The ORF clone is ion-exchange column purified and shipped in a 2D barcoded Matrix tube containing 10ug of transfection-ready, dried plasmid DNA (reconstitute with 100 ul of water).

**Reconstitution Method:**

1. Centrifuge at 5,000xg for 5min.
2. Carefully open the tube and add 100ul of sterile water to dissolve the DNA.
3. Close the tube and incubate for 10 minutes at room temperature.
4. Briefly vortex the tube and then do a quick spin (less than 5000xg) to concentrate the liquid at the bottom.
5. Store the suspended plasmid at -20°C. The DNA is stable for at least one year from date of shipping when stored at -20°C.

**RefSeq:** [NM\\_018063.5](#)

**RefSeq Size:** 3165 bp

**RefSeq ORF:** 2517 bp

**Locus ID:** 3070

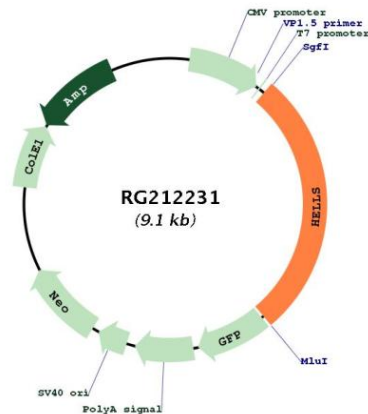
**UniProt ID:** [Q9NRZ9](#)

**Cytogenetics:** 10q23.33

**Domains:** SNF2\_N, DEAD, helicase\_C

**Gene Summary:** This gene encodes a lymphoid-specific helicase. Other helicases function in processes involving DNA strand separation, including replication, repair, recombination, and transcription. This protein is thought to be involved with cellular proliferation and may play a role in leukemogenesis. Alternatively spliced transcript variants encoding different isoforms have been identified. [provided by RefSeq, Jan 2014]

## Product images:



Circular map for RG212231