

Product datasheet for **RG212214**

CEACAM7 (NM_006890) Human Tagged ORF Clone

Product data:

Product Type:	Expression Plasmids
Product Name:	CEACAM7 (NM_006890) Human Tagged ORF Clone
Tag:	TurboGFP
Symbol:	CEACAM7
Synonyms:	CGM2
Mammalian Cell Selection:	Neomycin
Vector:	pCMV6-AC-GFP (PS100010)
E. coli Selection:	Ampicillin (100 ug/mL)
ORF Nucleotide Sequence:	>RG212214 representing NM_006890 Red=Cloning site Blue=ORF Green=Tags(s)

TTTTGTAATACGACTCACTATAGGGCGCCGGGAATTCGTCGACTGGATCCGGTACCGAGGAGATCTGCC
GCC**CGATCGCC**

ATGGGTTCCCCTTCAGCCTGTCCATACAGAGTGTGCATTCCCTGGCAGGGGCTCCTGCTCACAGCCTCGC
TTTTAACCTTCTGGAACCTGCCAAACAGTGCCAGACCAATATTGATGTCGTGCCGTTCAATGTCGCAGA
AGGGAAGGAGGTCCTTCTAGTAGTCCATAATGAGTCCCAGAATCTTTATGGCTACAACGGTACAAAGGG
GAAAGGGTGCATGCCAACTATCGAATTATAGGATATGTAAAAAATAAGTCAAGAAAATGCCCCAGGGC
CCGCACACAACGGTCGAGAGACAATATACCCCAATGGAACCTGCTGATCCAGAACGTCACCCACAATGA
CGCAGGAATCTATACCCTACACGTTATAAAGAAAATCTTGTGAATGAAGAAGTAAACAGACAATTCTAC
GTATTCTCGGAGCCACCAAGCCCTCCATCACCAGCAACAACCTCAATCCGGTGGAGAACAAGATATTG
TGGTTTTAACCTGTCAACCTGAGACTCAGAACAACCTACCTGTGGTGGTAAACAATCAGAGCCTCCT
GGTCAGTCCCAGGCTGCTGCTCTCCACTGACAACAGGACCCTCGTTCTACTCAGCGCCACAAAGAATGAC
ATAGGACCCTATGAATGTGAAATACAGAACCCAGTGGGTGCCAGCCGAGTGACCCAGTCACCCCTGAATG
TCCGCTATGAGTCAGTACAAGCAAGTTCACCTGACCTCTCAGCTGGGACCCTGTGAGCATCATGATTGG
AGTACTGGCTGGGATGGCTCTGATA

ACGCGTACGCGGCCGCTCGAG - GFP Tag - GTTTAA



[View online »](#)

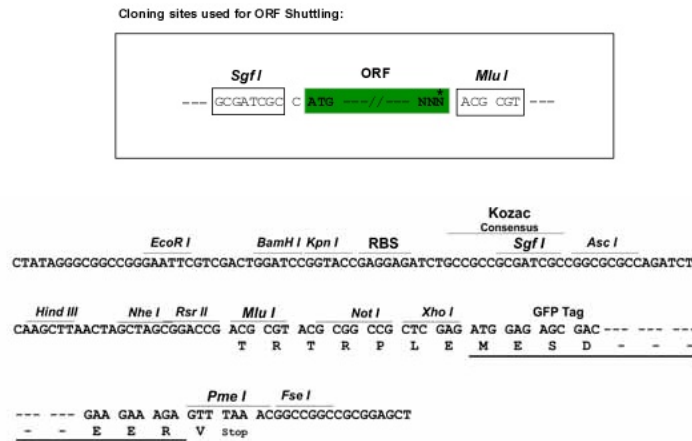
Protein Sequence: >RG212214 representing NM_006890
 Red=Cloning site Green=Tags(s)

MGSPSACPVRVCIPWQGLLLTASLLTFWNLPSAQTNIDVVPFNVAEGKEVLLVVHNESQNLGYNWKYK
 ERVHANYRIIGYVKNISQENAPGPAHNGRETIYPNGTLLIQNVTHNDAGIYTLHVIKENLVNEEVTRQFY
 VFSEPPKPSITSNNFNPVENKDIVVLTCPETQNTTYLWWWNNQSLLVSPRLLLSTDNRTLVLLSATKND
 IGPYECEIQNPVGASRSDPVTLNVRYESVQASSPDL SAGTAVSIMIGVLGAMALI

TRTRPLE - GFP Tag - V

Restriction Sites: SgfI-MluI

Cloning Scheme:



ACCN: NM_006890

ORF Size: 795 bp

OTI Disclaimer: The molecular sequence of this clone aligns with the gene accession number as a point of reference only. However, individual transcript sequences of the same gene can differ through naturally occurring variations (e.g. polymorphisms), each with its own valid existence. This clone is substantially in agreement with the reference, but a complete review of all prevailing variants is recommended prior to use. [More info](#)

OTI Annotation: This clone was engineered to express the complete ORF with an expression tag. Expression varies depending on the nature of the gene.

Components: The ORF clone is ion-exchange column purified and shipped in a 2D barcoded Matrix tube containing 10ug of transfection-ready, dried plasmid DNA (reconstitute with 100 ul of water).

Reconstitution Method:

1. Centrifuge at 5,000xg for 5min.
2. Carefully open the tube and add 100ul of sterile water to dissolve the DNA.
3. Close the tube and incubate for 10 minutes at room temperature.
4. Briefly vortex the tube and then do a quick spin (less than 5000xg) to concentrate the liquid at the bottom.
5. Store the suspended plasmid at -20°C. The DNA is stable for at least one year from date of shipping when stored at -20°C.

RefSeq: [NM_006890.5](#)

RefSeq Size: 2292 bp

RefSeq ORF: 798 bp

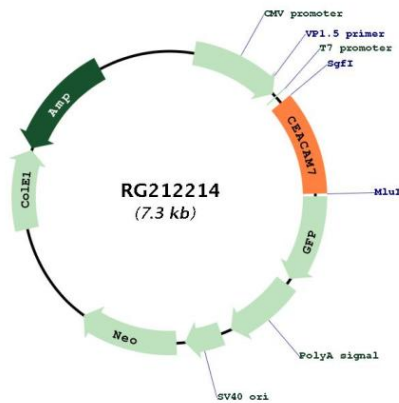
Locus ID: 1087

UniProt ID: [Q14002](#)

Cytogenetics: 19q13.2

Gene Summary: This gene encodes a cell surface glycoprotein and member of the carcinoembryonic antigen (CEA) family of proteins. Expression of this gene may be downregulated in colon and rectal cancer. Additionally, lower expression levels of this gene may be predictive of rectal cancer recurrence. This gene is present in a CEA family gene cluster on chromosome 19. Alternative splicing results in multiple transcript variants. [provided by RefSeq, Jul 2015]

Product images:



Circular map for RG212214