

Product datasheet for **RG212165**

NCOR2 (NM_001077261) Human Tagged ORF Clone

Product data:

Product Type:	Expression Plasmids
Product Name:	NCOR2 (NM_001077261) Human Tagged ORF Clone
Tag:	TurboGFP
Symbol:	NCOR2
Synonyms:	CTG26; N-CoR2; SMAP270; SMRT; SMRTE; SMRTE-tau; TNRC14; TRAC; TRAC-1; TRAC1
Mammalian Cell Selection:	Neomycin
Vector:	pCMV6-AC-GFP (PS100010)
E. coli Selection:	Ampicillin (100 ug/mL)
ORF Nucleotide Sequence:	>RG212165 representing NM_001077261 Red=Cloning site Blue=ORF Green=Tags(s)

TTTTGTAATACGACTCACTATAGGGCGGCCGGAATTCGTCGACTGGATCCGGTACCGAGGAGATCTGCC
GCC**CGATCGCC**

ATGTCGGGATCCACACAGCCTGTGGCACAGACGTGGAGGGCCACTGAGCCCCGCTACCCGCCCCACAGCC
TTTCCTACCCAGTGCAGATCGCCCGGACGCACACGGACGTGGGGCTCCTGGAGTACCAGCACCCTCCCG
CGACTATGCTCCACCTGTCGCCGGCTCCATCATCCAGCCCCAGCGGGAGGCCCTCCCTGCTGTCT
GAGTTCAGCCCCGGAATGAACGGTCCCAGGAGCTCCACCTGCGGCCAGAGTCCACTCATACTGCCCG
AGCTGGGAAGTCAGAGATGGAGTTCATTGAAAGCAAGCGCCCTCGGCTAGAGCTGCTGCCTGACCCCT
GCTGCGACCGTACCCCTGCTGGCCACGGGCCAGCCTGCGGGATCTGAAGACCTACCAAGGACCGTAGC
CTGACGGGCAAGCTGGAACCGGTGTCTCCCCAGCCCCCGCACACTGACCCTGAGCTGGAGCTGGTGC
CGCCACGGCTGTCCAAGGAGGAGCTGATCCAGAACATGGACCGCGTGGACCGAGAGATCACCATGGTAGA
GCAGCAGATCTCTAAGCTGAAGAAGAAGCAGCAACAGCTGGAGGAGGAGGCTGCCAAGCCGCCGAGCCT
GAGAAGCCCGTGTACCGCCGCCATCGAGTCGAAGCACCGCAGCCTGGTGCAGATCATCTACGACGAGA
ACCGGAAGAAGGCTGAAGCTGCACATCGGATTCTGGAAGGCTGGGGCCCCAGGTGGAGCTGCCGCTGTA
CAACCAGCCCTCCGACACCCGGCAGTATCATGAGAACATAAAAATAAACCAGGCGATCGGAAGAAGCTA
ATCTTGTACTTCAAGAGGAGGAATCACGCTCGGAACAATGGGAGCAGAAGTTCTGCCAGCGCTATGACC
AGCTCATGGAGGCTGGGAGAAGAAGTGGAGCGCATCGAGAACAACCCCGCGCGGGCCAAGGAGAG
CAAGGTGCGCGAGTACTACGAGAAGCAGTTCCTGAGATCCGCAAGCAGCGCGAGCTGCAGGAGCGCATG
CAGAGCAGGGTGGCCAGCGGGCAGTGGGCTGTCCATGTGCGCCGCCCGCAGCGAGCACGAGGTGTGAG
AGATCATCGATGGCCTCTCAGAGCAGGAGAACCTGGAGAAGCAGATGCGCCAGCTGGCCGTGATCCCGCC
CATGCTGTACGACGCTGACCAGCAGCGCATCAAGTTCATCAACATGAACGGGCTTATGGCCGACCCCATG
AAGGTGTACAAAGACCGCCAGGTCATGAACATGTGGAGTGAAGGAGGAGACCTTCCGGGAGAAGT
TCATGCAGCATCCAAGAAGTGGCCTGATCGCATATTCTGGAGAGGAAGACAGTGGCTGAGTGCCT
CCTCTATTACTACCTGACTAAGAAGAATGAGAATAAGAGCCTGGTGAAGCAGGAGCTATCGCCGCCG



[View online »](#)

TCTCGCCCCGCGAGTCTCGCTGGCACTCAACTACGCTGCGGGTCCCCGAGGCATCATCGACCTGTCCCA
AGTGCCACACCTGCCTGTGCTCGTGCSCCCGACACCAGGCACCCAGCCACCGCCATGGACCGCCTTGCC
TACCTCCCCACCGCGCCCCAGCCCTTACGACGCCGCCACAGCAGCTCCCCACTCTCCCCAGGAGGTCCAA
CACACTTGACAAAACCAACCACCACGTCTCGTCCGAGCGGGAGCGAGACCGGGATCGAGAGCGGGACCG
GGATCGGGAGCGGAAAAGTCCATCCTCACGTCCACCACGACGGTGGAGCACGCACCCATCTGGAGACCT
GGTACAGAGCAGAGCAGCGGCAGCAGCGGCAGCGGGGGGGTGGGGGAGCAGCAGCCGCCCCGCT
CCCACCTCCATGCCACCAGCACTCGCCATCTCCCTCGGACCCAGGATGCCCTCCAGCAGAGACCCAG
TGTGCTTCAACACAGGCATGAAGGGTATCATACCGCTGTGGAGCCAGCACGCCACCGTCTTGAGG
TCCACCTCCACCTCCTCACCCGTTGCGCCGGCTGCCACATTCCACCTGCCACCCACTGCCACTGGGCG
GCACCCTCGATGGGGTCTACCCTACCCTCATGGAGCCCGTCTTGCTGCCAAGGAGGCCCCCCGGGTGCG
CCGGCCAGAGCGGCCCGAGCAGACACCGGCCATGCCTTCTCGCAAGCCCCAGCCCGCTCCGGGCTG
GAGCCCGCTCTCCCCAGCAAGGGCTCGGAGCCCCGGCCCTAGTGCCTCCTGTCTTGCCACGCCA
CCATCGCCCGACCCCTGCGAAGAACCTCGCACCTACCACGCCAGCCCGGACCCCGCGGCCACCTGC
CTCGGCTCGGACCCGACCGGAAAAGACTCAAAGTAAACCCTTTTCCATCCAGGAACTGGAACCTCGT
TCTCTGGGTTACCACGGCAGCAGCTACAGCCCCGAAGGGTGGAGCCCGTACGCCCTGTGAGCTCACCA
GTCTGACCACGACAAGGGGCTCCCAAGCACCTGGAAGAGCTCGACAAGAGCCACTGGAGGGGGAGCT
GCGGCCAAGCAGCCAGGCCCGTGAAGCTTGGCGGGGAGGCCGCCACCTCCCACACCTGCGGCCGCTG
CCTGAGAGCCAGCCCTCGTCCAGCCCGTCTCCAGACCGCCCCAGGGGTCAAAGGTACCAGCGGGTGG
TCACCCTGGCCAGCACATCAGTGAGGTATCACACAGGACTACACCCGGCACCACCCACAGCAGCTCAG
CGCACCCCTGCCCGCCCCCTCTACTCCTTCCCTGGGGCCAGTGCSCCGTCTGGACCTCCGCCGCCA
CCCAGTGACCTTACTCCCGCCCCGGACCATGGTCCCCGGCCCGTGGCTCCCCCACAGCGAAGGGG
GCAAGAGGTCTCCAGAGCCAAACAAGACGTCGGTCTTGGGTGGTGGTGGAGACGGTATTGAACCTGTGTC
CCCACCGAGGGCATGACGGAGCCAGGGCACTCCCGAGTGTGTGTACCCGCTGTGTACCGGATGGG
GAACAGACGGAGCCAGCAGGATGGGCTCCAAGTCTCCAGGCAACACCAGCCAGCCAGCCAGCCTTCTCA
GCAAGCTGACCGAGAGCAACTCCGCCATGGTCAAGTCCAAGAAGCAAGAGATCAACAAGAAGCTGAACAC
CCACAACCAGGAAATGAGCCTGAATACAATATCAGCCAGCCTGGGACGGAGATCTTCAATATGCCCGCCATC
ACCGGAACAGGCCTTATGACCTATAGAAGCCAGGCGGTGCAGGAACATGCCAGCACCAACATGGGGTGG
AGGCCATAATTAGAAAGGCACTCATGGGTGGCGGCGGAAAGGCCAAGGTCTCTGGCAGACCAGCAGCCG
AAAAGCCAAGTCCCCGGCCCCGGGCTGGCATCTGGGACCGGCCACCCTCTGTCTCCTCAGTGCACCTCG
GAGGGAGACTGCAACCGCCGACCCGCTACCAACCAGCGTGTGGGAGGACAGGCCCTCGTCCGAGGTT
CCACGCCATTCCCTACAACCCCTGATCATGCGGCTGCAGGCGGGTGTATGGCTTCCCCACCCACC
GGGCTCCCCGGGCGAGCGGGCCCTCGCTGGCCCCACCAGCCTGGGACGAGGAGCCCAAGCCACTG
CTCTGCTCGCAGTACGAGACTCTCCGACAGCGAG

ACGCGTACGCGGCCGCTCGAG – GFP Tag – GTTTAA

Protein Sequence: >RG212165 representing NM_001077261
 Red=Cloning site Green=Tags(s)

```

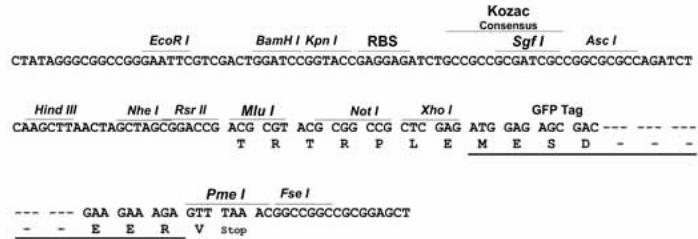
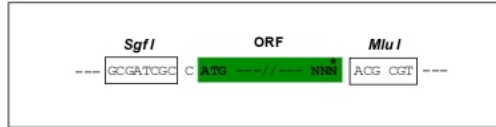
MSGSTQPVAQWTRATEPRYPHSLSYPVQIARTHTDVGLLEYQHHSRDYASHLSPGSI IQPQRRRPSLLS
EFQPGNERSQELHLRPESHSYLPELGKSEMEFIESKRPRELELLPDLLRPSPLLATGQPAGEDLTKDRS
LTGKLEPVSPSPPHTDPELELVPPRLSKEELIQNMDRVDREITMVEQQISKLKKKQQQLEEEAAKPPEP
EKPVSPPIESKHRSLVQIIYDENRKKAEAAHRIEGLGPOVELPLYNQPSDTRQYHENIKINQAMRKKL
ILYFKRRNHARKQWEQKFCQRYDQLMEAWKVERIENNRRAKESKVREYYEKQFPEIRKQRELQERM
QSRVGRGSGLSMSAARSEHEVSEIIDGLSEQENLEKQMRQLAVIPPMLYDADQQRIKF INMNGLMADPM
KVYKDRQVMNMWSEQEKETFREKFMQHPKNFGLIASFLERKTVAECVLYYYLTKKNENYKSLVRRSYRRR
GKSQQQQQQQQQQQQQQPMPRSSQEEKDEKEKEAEKEEEEKPEVENDKEDLLKEKTDGSDGNDDE
KEAVASKGRKTANSQGRKGRITRSMANEANSEEAITPQQAELASMELNESSRWTEEMETAKKGLLEH
GRNWSA IARMVGSKTVSQCKNFYFNKQRQNLDEILQQHKLKMEKERNARRKKKAPAAASEEAFPPVV
EDEEMEASGVSGNEEMVEEAEATVNNSSDTEIPSPHTEAAKDTGQNGPKPPATL GADGPPPPPTPPP
EDIPAPTEPTASEATGAPTPPPAPPSPSAPPVVPKKEEKEEETAAAPPVEEGEEQKPPAAEELAVDTGK
AEEPVKSECTEEAEEGPAKGKDAEAAEATAEGALKAEEKEGGSGRATTAKSSGAPQSDSDSATCSADEVD
EAEGGDKNRLSPRPSLLTPTGDPRANASPKPLDLKQLKQRAAIIPIQVTKVHEPPREDAAPTAPPP
APPPPQNLQPESDAPQQGSSPRGKSRSPAPPADKEAEKPVFFPAFAAEAQKLPGDPPCWT SGLPFPVPP
REVIKASPHADPSAFSYAPPGHPLPLGLHDTARPVLP RPPTISNPPPLISSAKHPSVLERQIGAISQGM
SVQLHVPYSEHAKAPVGPVTMGLPLPMDPKKLAPFSGVKQEQLSPRGQAGPPESLGVPTAQEASVLRGTA
LGSVPGGSITKGIPTSTRVPSDAITYRGSITHGTPADVL YKGTITRIIGEDSPSRLDRGREDSLPKGHVI
YEGKKGHVLSYEGGMSVTQCSKEDGRSSSGPPHETAAPKRTYDMMEGRVGRAISSASIEGLMGRAIPPER
HSPHHLKEQHHRGSIITQGI PRSYVEAQEDYL RREAKLLKREGTPPPPPSRDL TEAYKTQALGPLKLP
AHEGLVATVKEAGRSIHEIPREELRHTPELPLAPRPLKEGSITQGTPLKYDTGASTTGSKKHVRSIIGS
PGRTFPPVHPLDVMADARALERACYEESLKS RSGTASSSGGSIARGAPVIVPEL GKPRQSPLTYEDHGAP
FAGHLPRGSPVTTREPTPRLQEGSLSSSKASQDRKLTSTPREIAKSPHSTVPEHHPHPI SPYEHLLRGVS
GVDLYRSHIPLAFDPTSIPRGIPLDAAAAYLPRHLAPNPTYPHLYPPYLIRGYPDTAALENRQTIINDY
ITSQQMHHNAATAMAQRADMLRGLSPRESSALNYAAGPRGIIDL SQVPHLPVLVPPTPGTPATAMDRLA
YLPTAPQPFSSRHSSSPLSPGGPHTLTKPTTSSSERERDRDRERDREREKSILTSTTTVEHAPIWRP
GTEQSSGSSGSSGGGSSSRPASHSHAHQHSPISPR TQDALQQRPSVLHNTGMKGIITAVEPSTPTVLR
STSTSSPVRPAATFPPATHCPLGGTLDGVYPTLM EPVLLPKEAPRVARPERPRADTGHAFLAKPPARSGL
EPASSPSKGSERPLVPPVSGHATIARTPAKNLAPHASPDPPAPPASASDPHREKTQSKPFSIQELELR
SLGYHGSSYSPEGVEPVSPVSSPSLTHDKGLPKHLEELDKSHLEGELRPKQPGPVKLGGEAAHLPHLRPL
PESQSSSPLLQTAPGVKGHRVVTLAQHISEVITQDYTRHHPQQLSAPLPAPLYSFFPGASCPLDLRRP
PSDLYLPPPDHGAPARGSPHSEGGKRSPEPNKTSVLGGGEDGIEPVSPPEGMTEPGHSRSAVYPLL YRDG
EQTEPSRMGSKSPGNTSQPPAFFSKL TESNSAMVKSKKQEINKKLNTHNRNEPEYNI SQPGTEIFNMPAI
TGTGLM TYRSQAVQEHA STMGLEA IIRKALMGGGGKAKVSGRPSRKA KSPAPGLASGDRPPSVSSVHS
EGDCNRRTPLTNRVWEDRPSSAGSTFPFYNPLIMRLQAGVMASPPPPGLPAGSGPLAGPHHAWDEEPKPL
LCSQYETLSDSE
  
```

TRTRPLE - GFP Tag - V

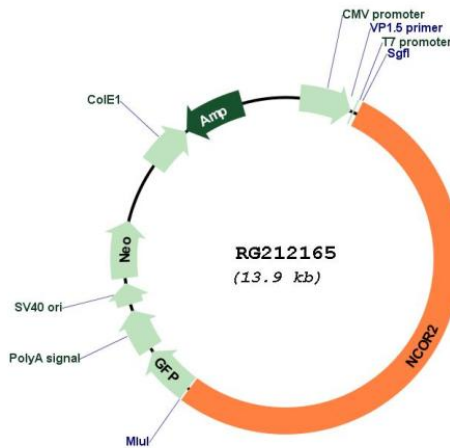
Restriction Sites: SgfI-MluI

Cloning Scheme:

Cloning sites used for ORF Shutting:



Plasmid Map:



ACCN: NM_001077261

ORF Size: 7386 bp

OTI Disclaimer:	The molecular sequence of this clone aligns with the gene accession number as a point of reference only. However, individual transcript sequences of the same gene can differ through naturally occurring variations (e.g. polymorphisms), each with its own valid existence. This clone is substantially in agreement with the reference, but a complete review of all prevailing variants is recommended prior to use. More info
OTI Annotation:	This clone was engineered to express the complete ORF with an expression tag. Expression varies depending on the nature of the gene.
Components:	The ORF clone is ion-exchange column purified and shipped in a 2D barcoded Matrix tube containing 10ug of transfection-ready, dried plasmid DNA (reconstitute with 100 ul of water).
Reconstitution Method:	<ol style="list-style-type: none"> 1. Centrifuge at 5,000xg for 5min. 2. Carefully open the tube and add 100ul of sterile water to dissolve the DNA. 3. Close the tube and incubate for 10 minutes at room temperature. 4. Briefly vortex the tube and then do a quick spin (less than 5000xg) to concentrate the liquid at the bottom. 5. Store the suspended plasmid at -20°C. The DNA is stable for at least one year from date of shipping when stored at -20°C.
RefSeq:	NM_001077261.2
RefSeq Size:	8550 bp
RefSeq ORF:	7377 bp
Locus ID:	9612
UniProt ID:	Q9Y618
Cytogenetics:	12q24.31
Protein Families:	Druggable Genome
Protein Pathways:	Notch signaling pathway
Gene Summary:	This gene encodes a nuclear receptor co-repressor that mediates transcriptional silencing of certain target genes. The encoded protein is a member of a family of thyroid hormone- and retinoic acid receptor-associated co-repressors. This protein acts as part of a multisubunit complex which includes histone deacetylases to modify chromatin structure that prevents basal transcriptional activity of target genes. Aberrant expression of this gene is associated with certain cancers. Alternate splicing results in multiple transcript variants encoding different isoforms.[provided by RefSeq, Apr 2011]