

## Product datasheet for **RG212158**

### **PHTF2 (NM\_020432) Human Tagged ORF Clone**

#### **Product data:**

Product Type:	Expression Plasmids
Product Name:	PHTF2 (NM_020432) Human Tagged ORF Clone
Tag:	TurboGFP
Symbol:	PHTF2
Mammalian Cell Selection:	Neomycin
Vector:	pCMV6-AC-GFP (PS100010)
E. coli Selection:	Ampicillin (100 ug/mL)



[View online »](#)

ORF Nucleotide  
Sequence:

>RG212158 representing NM\_020432  
Red=Cloning site Blue=ORF Green=Tags(s)

TTTTGTAATACGACTCACTATAGGGCGGCCGGGAATTCGTCGACTGGATCCGGTACCGAGGAGATCTGCC  
GCC**CGCATCGCC**

ATGGCGCCCAAAGTCACAGATGCTATAGTCTGGTATCAAAGAAGGAGTTTCTCTGTGGCCACCACCG  
CCCCAGGCCACAGCAAGTACTGCCTGGCTACTGCCAGTGTTCCTCAAGGACCAAGGGCTTTCATTCA  
GTGTTTGATTGGAGCATATGATCAACAAATATGGGAAAAATCTGTTGAACAGAGAGAAATCAAGTTATT  
AAACTGGGGCTAAGGAATAAACCAAGAAAAACAGCACATGTGAAACCAGACCTCATAGATGTTGATCTTG  
TAAGAGGGTCTGCATTTGCAAAGGCAAAGCCTGAAAGTCTTGGACTTCTCTGACCAGAAAGGGAATTGT  
TCGAGTTGATTTTTCCCTTTTTCTCCGGTGGTGGTTACAAGTAACATCAAAGTTCATTTTTCTGG  
CTTCTTGCTTTATCTTCTCAAGTTGCTGCAATAGTATTATTCTGCTCCACTTCTAGCCACACAGCA  
TACCTCTGACAGAGGTGATTGGCCGATATGGCTGATGCTGCTCCTGGAACTGTGCATTGCCAGATTGT  
TTCCACAAGAACCCAAACCTCTAAGTACAGGGGGTAAAAGAAGAAGGAAATTAAGAAAAGCAGCC  
CATTTGGAAGTACATAGGGAAGGAGATGGTTCTAGTACCACAGATAACACACAAGAGGGAGCAGTTCAGA  
ACCACGGTACAAGCACCTCTCACAGCGTTGGCACTGTCTTCAGAGATCTCTGGCATGCTGCTTTCTTTT  
ATCAGGATCAAAGAAAGCAAAGAATTCAATTGATAAATCAACTGAACTGACAATGGCTATGATCCCTT  
GATGGGAAGAAGACTGTTAAAAGCGGTGAAGATGGAATACAAAACCATGAACCTCAGTGTGAAACTATTC  
GACCAGAAGAGACAGCCTGGAACACAGGAACACTGAGGAATGGTCTAGCAAAGATACCCAAAGGACAAT  
AACAAATGTCTCTGATGAAGTCTCCAGTGAAGGTCCTGAAACAGGATACTCATTACGTCGTCATGTG  
GACAGGACTTGAAGGTGTTCTTCGGAATAGAAAGTACACCATTATAAGAAACATTACCTAATGAGG  
ACGCCCTAAATCGGGTACTAGTTGCAGCTCTCGCTGTTCAAGTCCAGACAGGATCTGAGAGTGCAG  
GCCAGAATCTGAAACAGAAAGATGTGTTATGGGAAGACTTGTTACATTGTGCAGAATGCCATTCATCTTGT  
ACCAGTGAGACAGATGTGAAAAATCATCAGATTATCCATGTGTGAAAAAAGAATATAGAGATGACCCTT  
TTCATCAGAGTCAATTTGCCCTGGCTCCATAGTCCCACCCAGGATTAGAAAAAATAAGTGTATAGTATG  
GGAAGGTAATGATTGTAAGAAAGCAGACATGTCTGTACTTGAAATCAGTGGAAATGATAATGAACAGAGTG  
AACAGCCATATACCAGGAATAGGATACCAGATTTTGGAAATGCAGTCTCTCATACTGGGTTAACTC  
CATTTGTTTTCCGACTTCTCAAGCTACAGACTGGAACAACCTCACAGCACATTCTGCTCAGAACTTTA  
TGTGATTGCATTTGGTTCTAATGAAGATGCATAGTCTTTCTATGGTTATAATAAGTTTTGTGGTTCGC  
GTGCTCTGTGTGGATTTCTTTTTTTGCTCTGTGTAGCAGAAAGAACTTATAAACAGCGATTACTTT  
TTGCAAAACTCTTTGGACATTTAACATCTGCAAGGAGGGCTCGAAAATCTGAGGTTCTCATTTCCGGTT  
GAAGAAAGTACAGAAATATAAAAATGTGGCTATCTCCTGTTCTATCTTAAGCGTCGAGGTCCTCAGCGA  
TCAGTTGATGTAATAGTTTCATCTGCTTTCTATTGACTATCTCAGTTGTATTTATCTGTTGTGCCAGC  
TACTTCATGTACAGGATCTTCCTTGATTGCTACTACAATTGGGAATGGTAATCTGGTGCATCTCGTT  
AACACTTTTTCTCCTAAGATTTGTTACCCTGGATCAGAAACAAGTAAAAAATATAGTAATACCTCAATA  
TTACTTACTGAACAGATAAACCTCTACTGAAGATGGAGAAAAACCTAACAAAAAGGAGGAACTGACAC  
TAGTGAATAATGTTTTAAACTGGCTACTAACTGCTAAAGGAGTTGGACAGTCCTTTTAGATTATATGG  
GCTTACAATGAATCCGCTGCTTTATAACATCACCCAGGTTGTTATCCTGTCAGCTGTTTCTGGTGTATC  
AGTGACTTGCTTGATTTAATTTAAAGCTATGGAAGATTAAGTCA

**ACGCGT**ACGCGGCCGCTCGAG - GFP Tag - GTTTAA

**Protein Sequence:** >RG212158 representing NM\_020432  
 Red=Cloning site Green=Tags(s)

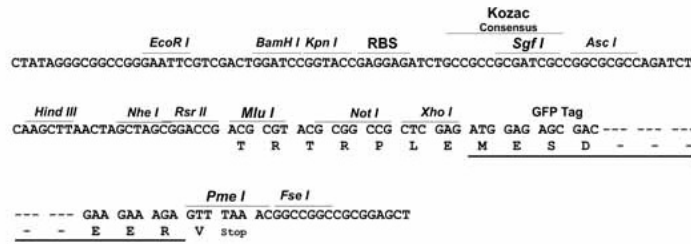
```
MAPKVTDIAIVWYQKKEFLSVATTAPGPQQVLPGYCQCSLKDQGLFIQCLIGAYDQQIWEKSVEQREIKFI
KLGLRNPKPKTAHVKPDLDVDLVRGSAFAKAKPESPWTSLTRKGI VRVVFFPFFRWWLQVTSKVIFFW
LLVLYLLQVAIIVLFCSTSSPHSIPLTEVIGPIWMLLLGTVHCQIVSTRTPKPLSTGGKRRRKLKAA
HLEVHREGDGSSTTDNTQEGAVQNHGTSTSHSVGTVFRDLWHAFFLSGSKKAKNSIDKSTETDNGYVSL
DGKKTVKSGEDGIQNHQPQCETIRPEETAWNTGTLRNGPSKDTQRTITNVSDEVSEEGPETGYSLRRHV
DRTSEGLRNRKSHHYKKHYPNEDAPKSGTSCSSRCSSSRQDSE SARPESETEDVLWEDLLHCAECHSSC
TSETDVENHQINPCVKKEYRDDPFHQSHLPWLHSSHPGLEKISAIWEGNDCKKADMSVLEISGMIMNRV
NSHIPGIGYQIFGNAVSLILGLTPFVFRLSQATDLEQLTAHSASELYVIAFGSNEDVIVLSMVIISFVVR
VSLVWIFFFLLCVAERTYKQRLLF AKLFGHLTSARRARKSEVPHFRLKKVQNIKMMWLSRSLKRRGPQR
SVDVIVSSAFLLTISVVICCAQLLHVHEIFLDCHYNWELVIWCISLTLFLLRFVTLGSETSKKYSNTSI
LLTEQINLYLKMEKKPNKKEELTLVNNVLKLATKLLKELDSPFRLYGLTMNPLL YNITQVVILSAVSGVI
SDLLGFNLKWKIKS
```

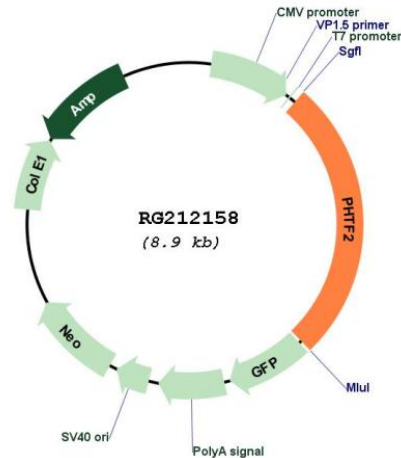
TRTRPLE - GFP Tag - V

**Restriction Sites:** SgfI-MluI

**Cloning Scheme:**

Cloning sites used for ORF Shuttling:



**Plasmid Map:**


**ACCN:** NM\_020432

**ORF Size:** 2355 bp

**OTI Disclaimer:** The molecular sequence of this clone aligns with the gene accession number as a point of reference only. However, individual transcript sequences of the same gene can differ through naturally occurring variations (e.g. polymorphisms), each with its own valid existence. This clone is substantially in agreement with the reference, but a complete review of all prevailing variants is recommended prior to use. [More info](#)

**OTI Annotation:** This clone was engineered to express the complete ORF with an expression tag. Expression varies depending on the nature of the gene.

**Components:** The ORF clone is ion-exchange column purified and shipped in a 2D barcoded Matrix tube containing 10ug of transfection-ready, dried plasmid DNA (reconstitute with 100 ul of water).

**Reconstitution Method:**

1. Centrifuge at 5,000xg for 5min.
2. Carefully open the tube and add 100ul of sterile water to dissolve the DNA.
3. Close the tube and incubate for 10 minutes at room temperature.
4. Briefly vortex the tube and then do a quick spin (less than 5000xg) to concentrate the liquid at the bottom.
5. Store the suspended plasmid at -20°C. The DNA is stable for at least one year from date of shipping when stored at -20°C.

**RefSeq:** [NM\\_020432.3](#)

**RefSeq Size:** 4802 bp

**RefSeq ORF:** 2244 bp

**Locus ID:** 57157

**UniProt ID:** [Q8N3S3](#)

**Cytogenetics:** 7q11.23-q21.11

**Protein Families:** Transcription Factors, Transmembrane

**Gene Summary:** May play a role in transcription regulation.[UniProtKB/Swiss-Prot Function]