

Product datasheet for **RG212155**

AGTRAP (NM_020350) Human Tagged ORF Clone

Product data:

Product Type: Expression Plasmids
Product Name: AGTRAP (NM_020350) Human Tagged ORF Clone
Tag: TurboGFP
Symbol: AGTRAP
Synonyms: ATRAP
Mammalian Cell Selection: Neomycin
Vector: pCMV6-AC-GFP (PS100010)
E. coli Selection: Ampicillin (100 ug/mL)
ORF Nucleotide Sequence: >RG212155 representing NM_020350
 Red=Cloning site Blue=ORF Green=Tags(s)

TTTTGTAATACGACTCACTATAGGGCGGCCGGAATTCGTCGACTGGATCCGGTACCGAGGAGATCTGCC
 GCC**CGATCGC**

ATGGAGCTGCCTGCTGTGAACCTGAAGGTGATTCTCCTAGGTCAGTGGCTGCTGACAACCTGGGGCTGCA
 TTGTATTCTCAGGCTCCTATGCCTGGGCCAACTTCACCATCCTGGCCTTGGGCGTGTGGCTGTGGCTCA
 GCGGGACTCCATCGACGCCATAAGCATGTTTCTGGGTGGCTTGTGGCCACCATCTTCTGGACATCGTG
 CACATCAGCATCTTCTACCGCGGGTCAGCCTCACGGACACGGGCCGCTTTGGCGTGGGCATGGCCATCC
 TCAGCTTGCTGCTCAAGCCGCTCTCCTGCTGCTTCGTCTACCACATGTACCGGGAGCGCGGGGTGAGCT
 CCTGGTCCACACTGGTTTCCTTGGGTCTTCTCAGGACCGTAGTGCCTACCAGACGATTGACTCAGCAGAG
 GCGCCCGCAGATCCCTTTGCAGTCCCAGAGGGCAGGAGTCAAGATGCCCGAGGGTCC

ACGCGTACGCGGCCGCTCGAG - GFP Tag - GTTTAA

Protein Sequence: >RG212155 representing NM_020350
 Red=Cloning site Green=Tags(s)

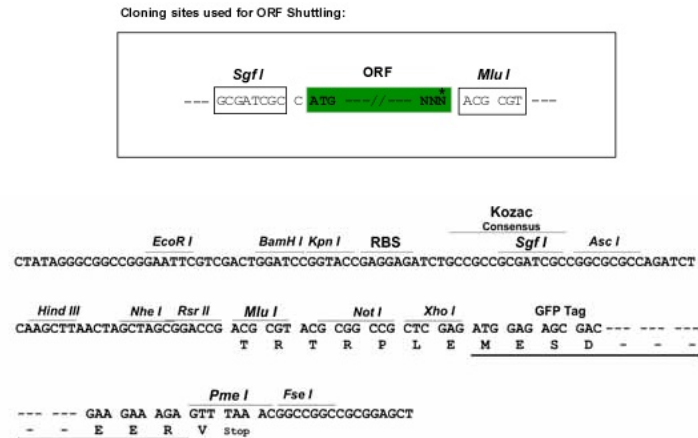
MELPAVNLIKVILLGHWLLTTWGCIVFSGSYAWANFTILALGVWAVAQRDSIDAISMFLGGLLATIFLDIV
 HISIFYPRVSLTDTGRFGVGMAILSLLLKPLSCCFVYHMYRERGGELLVHTGFLGSSQDRSAYQTIDSAE
 APADPFVPEGRSQDARGS

TRTRPLE - GFP Tag - V

Restriction Sites: SgfI-MluI



[View online »](#)

Cloning Scheme:


ACCN: NM_020350

ORF Size: 477 bp

OTI Disclaimer: The molecular sequence of this clone aligns with the gene accession number as a point of reference only. However, individual transcript sequences of the same gene can differ through naturally occurring variations (e.g. polymorphisms), each with its own valid existence. This clone is substantially in agreement with the reference, but a complete review of all prevailing variants is recommended prior to use. [More info](#)

OTI Annotation: This clone was engineered to express the complete ORF with an expression tag. Expression varies depending on the nature of the gene.

Components: The ORF clone is ion-exchange column purified and shipped in a 2D barcoded Matrix tube containing 10ug of transfection-ready, dried plasmid DNA (reconstitute with 100 ul of water).

Reconstitution Method:

1. Centrifuge at 5,000xg for 5min.
2. Carefully open the tube and add 100ul of sterile water to dissolve the DNA.
3. Close the tube and incubate for 10 minutes at room temperature.
4. Briefly vortex the tube and then do a quick spin (less than 5000xg) to concentrate the liquid at the bottom.
5. Store the suspended plasmid at -20°C. The DNA is stable for at least one year from date of shipping when stored at -20°C.

RefSeq: [NM_020350.3](#), [NP_065083.2](#)

RefSeq Size: 1108 bp

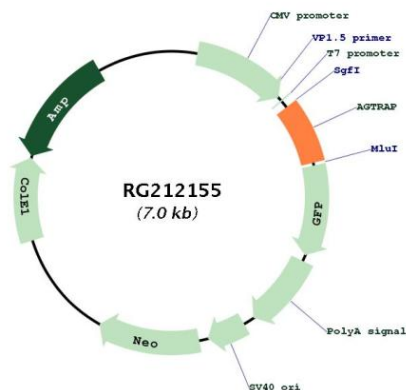
RefSeq ORF: 480 bp

Locus ID: 57085

UniProt ID: [Q6RW13](#)

Cytogenetics:	1p36.22
Protein Families:	Druggable Genome, Transmembrane
Gene Summary:	This gene encodes a transmembrane protein localized to the plasma membrane and perinuclear vesicular structures. The gene product interacts with the angiotensin II type I receptor and negatively regulates angiotensin II signaling. Alternative splicing of this gene generates multiple transcript variants encoding different isoforms. [provided by RefSeq, Jul 2008]

Product images:



Circular map for RG212155