

## Product datasheet for **RG212151**

### **SHPRH (NM\_173082) Human Tagged ORF Clone**

#### Product data:

Product Type:	Expression Plasmids
Product Name:	SHPRH (NM_173082) Human Tagged ORF Clone
Tag:	TurboGFP
Symbol:	SHPRH
Synonyms:	bA54515.2
Mammalian Cell Selection:	Neomycin
Vector:	pCMV6-AC-GFP (PS100010)
E. coli Selection:	Ampicillin (100 ug/mL)
ORF Nucleotide Sequence:	>RG212151 representing NM_173082 Red=Cloning site Blue=ORF Green=Tags(s)

TTTTGTAATACGACTCACTATAGGGCGGCCGGAATTCGTCGACTGGATCCGGTACCGAGGAGATCTGCC  
GCC**CGATCGCC**

ATGAGCAGCCGACGAAACGTGCTCCTCCAGTGAGGGTAGATGAGGAAAAGAGGCAGCAGCTTCATTGGA  
ATATGCATGAGGACAGAAGGAATGAACCTATCATCATAAGTGATGATGACGAGCAGCCCTGCCAGGTTC  
AGATACCTCTTCTGCTCATTATATCATTCTAAGTGATAGTCTAAAGGAAGAAGTGGCTCACAGAGATAAG  
AAGAGGTGTTCAAAGTGGTGAGCTTCTCAAACCAATTGAAAAAGAAGAGACTGTTGGTATTTTTTCCC  
CTTTGTCTGTAAGTTAAATATTGTGATTTCTCCCTATCATTGATAATTCCTGAAAGCATTCTAGG  
AGAATTAACCTTTCAGCTTCTTCTGCACAGAGTTAATTGAAAAATTTTCCGAAAGGAGTATTACATTG  
ATGAGTTCAGAGTCAAGCAATCAGTTCCTGATTTATGTTTCATTCAAAGGTGAAGATGTAGAGAAACAAA  
AAAAAGAACCAGTGAATTTGTGACAAGGGTATTCTGGTGGAGTCATCCTTCAGTGGTGAATGTTAGA  
AGATTTGGGGTGGCTACAAAAGAAGAGAAGAATAAACTCTATCAGAAACCAGAAGGAAATCACATTATC  
AAGGTTGGAATTTATCTTTTGAAGCTGGCCTAGCAAACTAGACTTCTTGAGTGATGCAAAATCAAGAA  
TGAAAAAGTTCAATCAGCTCATGAAGAAAGTAATGGAAAAGTTACACAATCTATTATCCAGATGTGTT  
GGAAGAGGATGAAGATGATCCGGAGAGTGAGCCAGAGGGACAAGACATTGACGAGCTGTATCACTTTGTG  
AAACAAACACATCAGCAAGAAACGCAGTCCATCCAAGTGGATGTCAGCATCCTGCATTGATCCCTGTGT  
TGAGACCCTACCAAAGAGAGGCTGTCAATTGGATGCTACAACAAGAGTGTTCAGAAGCAGTCCCTGCTAC  
TGAAAGTGCCCTGCACCTTCTATGGCGAGAGATTGTTACATCTGAGGGTCTGAAACTCTACTATAATCCA  
TATACAGGCTGCATCATTCTGTGAGTACCCAAATCTGGGCCGAGTTGCTTGGTGAATTTTAGCAGATG  
AGATGGGTCTTGGAAAGACAGTGGAGGTTTTGGCTCTGATTCTGACACATACTCGACAAGATGTCAAGCA  
AGATGCTCTCACTCTCCGAGGGAAAAGTGGTGAATTTTTATTCCGTCACATTATTTTGGAGGAAAA  
CTGAAAAAGACAGAAATCCAGAATATCGAATTTGAACCAAAAGAAAAAGTTCAATGCCCTCTACACGTG  
TGATGATACTGACAGCTGTGAAAGAAATGAATGGAAAAAAGGAGTGCCATCCTTTCCATCTATAAGTA  
TGTCAGTTCTATATAGATACGATGTTCAACGGAACAGGAGTCTTTTGAACGGATGCTGAAATGTTTA



[View online >](#)

ATTTTTGAAGGTCTCGTGAACAGATCAAAGGCCATGGTTTTCTGGGACTTTTACATTGGGAAAGAATT  
ACAAGGAAGAGGATATATGTGATAAAACAAAAAGCAGGCAGTAGGGAGTCCAAGGAAAATTCAGAAAAGA  
AACTAGAAAATCAGGGAACAAGGACACAGATTCTGAATACTTGCCATCAGACACCTCTGATGATGATGAT  
GATCCTTACTATTATTATAAGTCCAGGAGAAAATCGCAGTAAATTGAGGAAAAAGCTTGTCCATCCA  
CAAAAAAGGAAAAAGTCAACCATTTATCAATCCCATTACAAGGTCAGTGTCCAGCTACTAGCGACTC  
TGGAAACTGATGTTGCTATGTCTAAAAGTACATGTATCTCTGAATCAACCAAGAAGACGAAACAGAG  
GACTGTGCTGAATCTCTAAATCATGCTGATGTACCACCTTCTAATACCATGAGCCCTTTAACA  
CCTCTGATTACCCTTTGAGTGTATATGGTGAACCTTGATCAGATAGATCGTAAGCCTCGTGTCAATG  
CCTGAAGTGTACCTGTGGCAACATGCAAAGTGTGAATTATGATGAGAAAAATCTGAAGATCAAGCCT  
TTTTACTGCCCCACTGCCTTGTGCAATGGAACCAAGTGTCAACAAGAGCAACTCTGATCATCTCTCCAA  
GTTCCATCTGTCACCAGTGGGTGGATGAGATCAACAGGCATGTGAGGTCGTATCTCTTCGAGTCTTGGT  
ATATCAAGGAGTGAAGAAAGATGGCTTTTTACAACCTCATTTTTTGGCAGAACAGGATATAGTTATCATT  
ACCTATGATGACTGCGTTCAGAATTAATTATGTCGATATCCCACATAGCAATAGTGAGGATGGGCGTC  
GCCTACGGAACCAGAAGCGCTATATGGCTATCCCAGCCCCCTGGTAGCTGTGGAGTGGTGGAGGATCTG  
CCTTGATGAAGCTCAGATGGTTGAGTGTCCACAGTAAAAGCTGCAGAAATGGCCACGCTTTGAGTGGG  
ATTAATCGATGGTGTATCAGTGGCACTCCAGTACAGAGAGGATTAGAGGATCTTTTTGGGTTAGTGGTCT  
TTCTTGGTATTGAACCTTACTGTGTCAAACACTGGTGGGTTTCGACTTCTCTATCGGCCTTACTGCAAGAA  
GAATCCTCAGCATCTCTACAGCTTATTGCCAAGATACTGTGGAGGCTGCAAAGAAAGATGTGATTGAC  
CAAATCCAAATACCACCACAAACCGAAGAAATACACTGGCTCCACTTTTCTCCAGTGGAAAGGCATTTCT  
ATCACCCTCAGCATGAGGTGTGCTGCCAGGATGTGGTGGTAAAACCTCAGGAAGATTTCTGACTGGGCTCT  
GAAGCTCAGCAGCTAGACAGAAGGACTGTCACCTCTATCCTGTATCCATTGCTGAGGCTCAGACAGGCC  
TGCTGTCACCCACAGGCTGTTGCTGGAGAGTCTTGGCACTCAAAAAAGTTTGAACAGTCTACCTTTT  
CTTTTAGCACCATGACAATGGAAGAGCTGCTGACATCTTGCAGAAAGAAATGTGGAAGTGAATGGAAGA  
AGCACATCGACAGCTAGTTTGTGCTCTCAATGGCTTAGCAGGCATTCATATTATTAAGGTGAGTATGCC  
TTGGCAGCAGAATTGTACAGAGAAGTGTGCGCTCCTCGAGGAACACAAAGGAAAACTCAAACCTGATT  
CACTTCAAAGACTTCATGCTACCATAACTTGATGGAATTGTTGATAGCCAGGCACCCAGGGATACCACC  
TACCTTGCCTGATGGCCGACTTGAGGAAGAGGCCAAACAGCTGCGAGAGCACTACATGAGCAAGTGAAT  
ACAGAAGTTGCTGAAGCCAGCAAGCTTTATATCCTGTGCAGCAGACCATCCATGAGCTTCAAAGAAAGA  
TTCATTCTAATTCTCCTTGGTGGCTAAATGTGATCCACAGAGCAATAGAATTTACTATTGATGAGGAGCT  
AGTTCAGCGAGTGCAGAAATGAAATAACCAGCAACTACAAGCAACAACTGGCAAGCTTTCTATGTCAGAG  
AAAGTCTTCAGTCTTACTTACAACACAAATGGAAGAGCTAAATAAATGCCAGAAGCTAGTAAGAGAGG  
CTGTA AAAACCTGGAGGGACCTCCATCTCGTAATGTTATTGAGTCTGCAACAGTCTGTACCTCCGACC  
AGCCAGACTTCTCTCAACTGCTGTGCTTTTTGTAAAGCTGATGAATTGTTACAGAGTATGAATCAAAG  
CTATTTTCAAACACAGTCAAAGGCCAGACTGCAATATTTGAGGAGATGATAGAAGATGAAGAAGGACTGG  
TGGATGATCGAGCACCTACCACCACCCGGGCTCTCTGGGCAATAAGTGAGACAGAGCGATCTATGAAAGC  
AATACTATCATTGCAAATCACATAGGTTTGATGTTGAATTTGTTGATGAAGGAAGCACTTCAATGGAT  
CTCTTTGAAGCATGGAAGAAGGAATATAAGTTGCTTCAATGAATTTGGATGGCTCTGAGGAATCGTGTG  
CTGCTGTTGATGAACTTGAATGGCTACAGAACGACTAAGAGTGCCTGATCTAGGGAGCCAAAGCCTAA  
TCCGCCTGTTCTTCATATCATTGAACCACATGAGGTAGAACAAAACCGAATAAACTACTAAATGATAAA  
GCTGTTGCTACATCACAGCTTCAAAAAAACTTGGGCAGCTTCTTTACCTAACTAATTTGAGAAGTCTC  
AAGATAAAAACATCGGAGGTGTTAATCCAGAACCTTGCCCAATCTGTGCTCGACAGCTAGGAAAACAGTG  
GGCGTACTGACCTGTGGTCACTGTTTCTGTAATGAATGCATTTCTATAATTATTGAACAATACAGCGTG  
GGATCTCACAGAAGCTCCATTAAGTGTGCAATCTGCCGCCAGACCACATCTCACAAGAAATCTCGTATG  
TCTTTACCTCAGAGAAAGCAAACCAGGAGGAGGACATCCCTGTGAAGGGCAGCCATTCTACAAAAGTGA  
AGCTGTGGTCAGAACTCTGATGAAAATACAGCTTAGAGATCCAGGGGCCAAAGCACTCGTTTTCTCAACG  
TGGCAAGATGATTAGATATTATTTCAAAGCTTACTGACAACAACATGGAATTTGCACAATCAGTC  
GTGTTAAGACATTTAGGAGAACCTTTAGCATTAAACGTGATCCCAAATCAATATTTGCTGCTGCC  
CCTGCACACAGGTTCTAATGGATTAATCATTTGAAGCAACTCATGTTCTCTTGGTGGAGCCCATATTG  
AACCTGCCCATGAGCTTCAAGGCATAGGGAGGTTGCACCGAATTGGACAGACAAAACCTACTATTGTAC  
ACAGATTCTTAATTAAGCAACAATAGAAGAAAGAAATGCAGGCAATGCTGAAAACCTGCTGAGAGAAGTAT  
CTATATC

ACGCGTACGCGGCCGCTCGAG – GFP Tag – GTTTAA

**Protein Sequence:**

>RG212151 representing NM\_173082  
 Red=Cloning site Green=Tags(s)

MSSRRKRAPPVVRVDEEKRQQLHWNMHEDRRNEPIIISDDDEQPCPGSDTSSAHYIILSDSLKEEVAHRDK  
 KRCSKVVSFSKPIEKEETVGIKIFSPKLVKLNIVISPYHFDNSWKAFGLGELTLQLLPAQSLIENFSESRITL  
 MSESSENQFLIYVHSHKGEDVEKQKKEPMSICDKGILVESSFGEMLEDLGWLQKKRRIKLYQKPEGNHII  
 KVGIYLLLEAGLAKLDFLSDANSRMKKFNQMKVMEKLNHSIIPDVLEEDDEDDPESEPEGQDIDELYHFV  
 KQTHQQETQSIQVDVQHPALIPVLRPYQREAVNWMLQQEFCFRSSPATESALHFLWREIVTSEGLKLYNPN  
 YTGCIIREYPNNSGPQLLGGILADEMGLKTVLALILTHTRQDVQKDALTLPEGKVVNYFIPSHYFGGK  
 LKKEIQNIIEFEPKEKVCPPTRVMILTAVKEMNGKKGVSILSIYKYVSSIYRYDVQRNRSLLKRLMKCL  
 IFEGLVKQIKGHGFSGTFTLGKNYKEEDICDKTKKQAVGSPRKIQKETRSGNKDSDSEYLPSTSDDDD  
 DPYYIYKSRNRNRSKLRKLVSTKKGKSPFFINPDSQGHCPATSDSGITDVAMSKSTCISEFNQEHETE  
 DCAESLNHADSVPSPNTMSPFNTSDYRFECICGELDQIDRKPVRVQCLKCHLWQHAKCVNYDEKLNKIKP  
 FYCPHCLVAMEPVSTRATLIISPSISICHQWVDEINRHRVSSSLRVLYVYQGVKKGDFLQPHFLAEQDIVII  
 TYDVLRSSELNYVDIPHSNSEDGRRLRNQKRYMAIPSPLVAVEWWRICLDEAQMVECPTVKAEMAQRLSG  
 INRWICISGTPVQRGLEDLFLVFLGIEPYCVKHWVRLLYRKYCKNPQHLYSFIAKILWRSKAKDVID  
 QIQIPPQTEEIHWHFSPVERHFYHRQHEVCCQDVVVKLRKISDWALKLSSLDRTVTSTILYPLRLRQA  
 CCHPQAVRGEFLPLQKSFEQSTFSFSTMTMEELLTSLQKCGTECEEHRQLVCALNGLAGIHIKGEYA  
 LAAELYREVLRSSEEHKGLKTDLSLQRLHATHNLMELLIARHPGIPPTLRDGRLEEEAKQLREHYMSKCN  
 TEVAEAQALYPVQQTIELQRKIHSNSPWNLNVIHRAIEFTIDEELVQVRNEITSNYKQQTGKLSMSE  
 KGLQFLLTQMEELNKCQKLVREAVKNLEGPSPRVIESATVCHLRPARLPLNCCVFCKADELFTYESK  
 LFSNTVKGQTAIFEEMIEDEEGLVDDRPTTTRGLWAISETERSMKAILSFAKSHRFDVEFVDEGSTSMD  
 LFEAWKKEYKLLHEYWMALRNRVSAVDELAMATERLRVRDPREPKPNPPVLIIEPHEVEQNRIKLLNDK  
 AVATSQKQKGLQLLYLNLEKSQDKTSGGVNPEPCPCICARQLGKQWAVLTCGHCFCNECISIIIEQYSV  
 GSHRSSIKCAICRQTTSHKEISYVFTSEKANQEEDIPVKGSHSTKVEAVVRTLMKIQLRDPGAKALVFT  
 WQDVLDIISKALTDNMEFAQISRVKTFQENLSAFKRDQPINILLPLHTGSNGLTIEATHVLLVEPIL  
 NPAHELQAIGRVHRIGQTKPTIVHRFLIKATIEERMQAMLKTAERSIYI

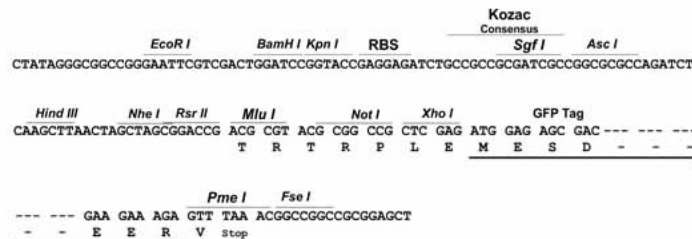
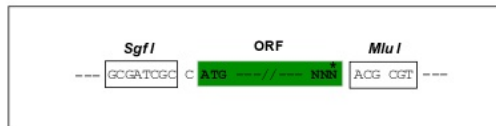
TRTRPLE – GFP Tag – V

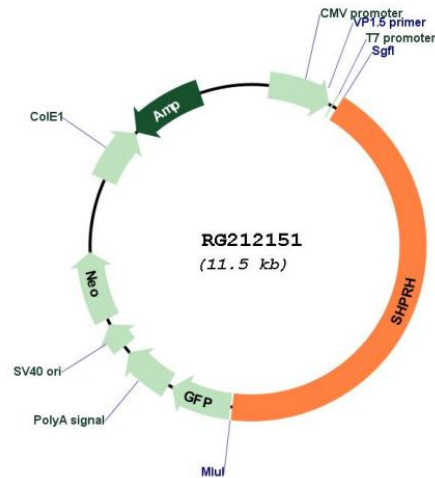
**Restriction Sites:**

Sgfl-MluI

**Cloning Scheme:**

Cloning sites used for ORF Shutting:



**Plasmid Map:**


**ACCN:** NM\_173082

**ORF Size:** 4977 bp

**OTI Disclaimer:** The molecular sequence of this clone aligns with the gene accession number as a point of reference only. However, individual transcript sequences of the same gene can differ through naturally occurring variations (e.g. polymorphisms), each with its own valid existence. This clone is substantially in agreement with the reference, but a complete review of all prevailing variants is recommended prior to use. [More info](#)

**OTI Annotation:** This clone was engineered to express the complete ORF with an expression tag. Expression varies depending on the nature of the gene.

**Components:** The ORF clone is ion-exchange column purified and shipped in a 2D barcoded Matrix tube containing 10ug of transfection-ready, dried plasmid DNA (reconstitute with 100 ul of water).

**Reconstitution Method:**

1. Centrifuge at 5,000xg for 5min.
2. Carefully open the tube and add 100ul of sterile water to dissolve the DNA.
3. Close the tube and incubate for 10 minutes at room temperature.
4. Briefly vortex the tube and then do a quick spin (less than 5000xg) to concentrate the liquid at the bottom.
5. Store the suspended plasmid at -20°C. The DNA is stable for at least one year from date of shipping when stored at -20°C.

**RefSeq:** [NM\\_173082.3](#), [NP\\_775105.1](#)

**RefSeq Size:** 7010 bp

**RefSeq ORF:** 4980 bp

**Locus ID:** 257218

<b>UniProt ID:</b>	<u>Q149N8</u>
<b>Cytogenetics:</b>	6q24.3
<b>Domains:</b>	SNF2_N, DEAD, helicase_C, RING, PHD, linker_histone
<b>Protein Families:</b>	Druggable Genome
<b>Gene Summary:</b>	SHPRH is a ubiquitously expressed protein that contains motifs characteristics of several DNA repair proteins, transcription factors, and helicases. SHPRH is a functional homolog of <i>S. cerevisiae</i> RAD5 (Unk et al., 2006 [PubMed 17108083]).[supplied by OMIM, Mar 2008]