

Product datasheet for **RG212133**

RGS4 (NM_001102445) Human Tagged ORF Clone

Product data:

Product Type: Expression Plasmids
Product Name: RGS4 (NM_001102445) Human Tagged ORF Clone
Tag: TurboGFP
Symbol: RGS4
Synonyms: RGP4; SCZD9
Mammalian Cell Selection: Neomycin
Vector: pCMV6-AC-GFP (PS100010)
E. coli Selection: Ampicillin (100 ug/mL)
ORF Nucleotide Sequence: >RG212133 representing NM_001102445
Red=Cloning site Blue=ORF Green=Tags(s)

TTTTGTAATACGACTCACTATAGGGCGGCCGGAATTCGTCGACTGGATCCGGTACCGAGGAGATCTGCC
GCC**CGATCGCC**

ATGTATAATATGATGCTTCTAATCCAAAAGAGGAAAGGCATTGGGAGTCAGCTCCTAAGGGCTGGAGAGG
CAGAGGGAGACAGAGGAGCTGGTACTGCAGAGCGGTCGTCTGATTGGCTGGACGGTCGTAGCTGGGCTAT
AAAAGAGACCCCTACAGGCTTAGCAGGAAGACGCTCAGAGGATTCTGACAATATCTTTACCGGAGAAGAG
GCAAAGTACGCTCAAAGCCGAAGCCACAGCTCCTCCTGCCGATTCTTTCTGCTTGCGAATTCGAAGC
TGTTAAATAAGATGTGCAAAGGGCTTGCAAGTCTGCCGGCTTCTTGCTTGAGGAGTGCAAAGATATGAA
ACATCGGCTAGGTTTCTGCTGCAAAAATCTGATTCTGTGAACACAATTCTCCACAACAAGAAGGAC
AAAGTGGTATTTGCCAGAGAGTGAGCCAAGAGGAAGTCAAGAAATGGGCTGAATCACTGAAAAACCTGA
TTAGTCATGAATGTGGGCTGGCAGCTTTCAAAGCTTTCTTGAAGTCTGAATATAGTGAGGAGAATATTGA
CTTCTGGATCAGCTGTGAAGAGTACAAGAAAATCAAATCACCATCTAAACTAAGTCCCAAGGCCAAAAAG
ATCTATAATGAATTCATCTCAGTCCAGGCAACCAAGAGGTGAACCTGGATTCTTGCAACAGGGAAGAGA
CAAGCCGGAACATGCTAGAGCCTACAATAACCTGCTTTGATGAGGCCAGAAGAAGATTTCAACCTGAT
GGAGAAGGATTCCTACCGCCGTTCTCAAGTCTCGATTCTATCTTGATTGGTCAACCCGTCAGCTGT
GGGGCAGAAAAGCAGAAAGGAGCCAAGATTCAGCAGACTGTGCTTCCCTGGTCCCTCAGTGTGCC

ACGCGTACGCGGCCGCTCGAG - GFP Tag - GTTTAA



[View online »](#)

Protein Sequence: >RG212133 representing NM_001102445
Red=Cloning site Green=Tags(s)

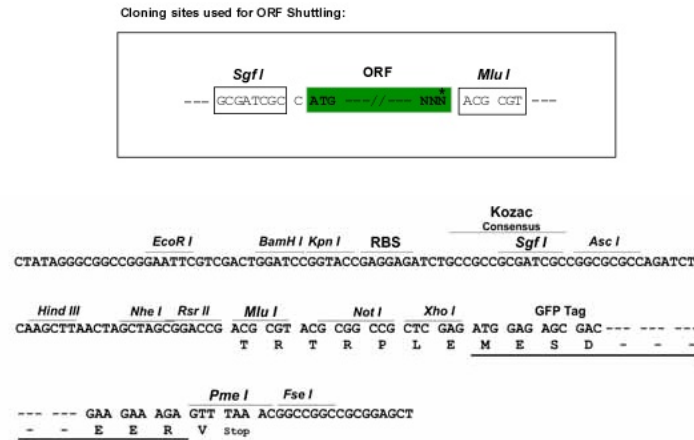
MYNMLLIQKRKIGISQLLRAGEAEGDRGAGTAERSSDWLDGRSWAIKETPTGLAGRRSESDSNIFTGEE
 AKYAQRSRSHSSSCRISFLLANSKLLNMCKGLAGLPASCLRSAKDMKHLGFLQKSDSCEHNSSHNKGD
 KVVICQRVSQEEVKKWAELENLISHECGLAAFKFLKSEYSEENIDFWISCEEYKKIKSPSKLSPKAKK
 IYNEFISVQATKEVNLDSCTREETSRNMLEPTITCFDEAQKKIFNLMKEDSYRRFLKSRFYLDLVPSSC
 GAEKQKGAQSSADCASLVPQCA

TRTRPLE - GFP Tag - V

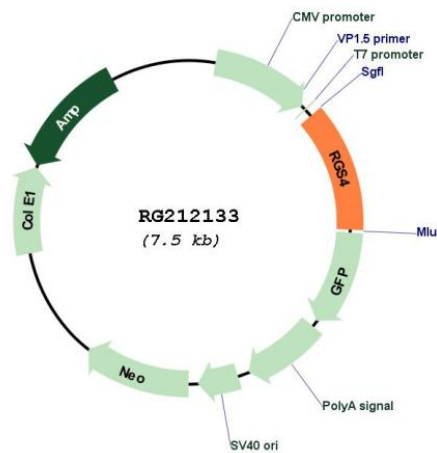
Restriction Sites:

SgfI-MluI

Cloning Scheme:



Plasmid Map:



ACCN: NM_001102445

ORF Size: 906 bp

OTI Disclaimer:	The molecular sequence of this clone aligns with the gene accession number as a point of reference only. However, individual transcript sequences of the same gene can differ through naturally occurring variations (e.g. polymorphisms), each with its own valid existence. This clone is substantially in agreement with the reference, but a complete review of all prevailing variants is recommended prior to use. More info
OTI Annotation:	This clone was engineered to express the complete ORF with an expression tag. Expression varies depending on the nature of the gene.
Components:	The ORF clone is ion-exchange column purified and shipped in a 2D barcoded Matrix tube containing 10ug of transfection-ready, dried plasmid DNA (reconstitute with 100 ul of water).
Reconstitution Method:	<ol style="list-style-type: none">1. Centrifuge at 5,000xg for 5min.2. Carefully open the tube and add 100ul of sterile water to dissolve the DNA.3. Close the tube and incubate for 10 minutes at room temperature.4. Briefly vortex the tube and then do a quick spin (less than 5000xg) to concentrate the liquid at the bottom.5. Store the suspended plasmid at -20°C. The DNA is stable for at least one year from date of shipping when stored at -20°C.
RefSeq:	NM_001102445.2 , NP_001095915.1
RefSeq Size:	3215 bp
RefSeq ORF:	909 bp
Locus ID:	5999
UniProt ID:	P49798
Cytogenetics:	1q23.3
Protein Families:	Druggable Genome
Gene Summary:	Regulator of G protein signaling (RGS) family members are regulatory molecules that act as GTPase activating proteins (GAPs) for G alpha subunits of heterotrimeric G proteins. RGS proteins are able to deactivate G protein subunits of the Gi alpha, Go alpha and Gq alpha subtypes. They drive G proteins into their inactive GDP-bound forms. Regulator of G protein signaling 4 belongs to this family. All RGS proteins share a conserved 120-amino acid sequence termed the RGS domain. Regulator of G protein signaling 4 protein is 37% identical to RGS1 and 97% identical to rat Rgs4. This protein negatively regulate signaling upstream or at the level of the heterotrimeric G protein and is localized in the cytoplasm. Alternatively spliced transcript variants have been found for this gene. [provided by RefSeq, Jul 2008]