

Product datasheet for **RG212116**

RBM12 (NM_006047) Human Tagged ORF Clone

Product data:

Product Type:	Expression Plasmids
Product Name:	RBM12 (NM_006047) Human Tagged ORF Clone
Tag:	TurboGFP
Symbol:	RBM12
Synonyms:	HRIHFB2091; SCZD19; SWAN
Mammalian Cell Selection:	Neomycin
Vector:	pCMV6-AC-GFP (PS100010)
E. coli Selection:	Ampicillin (100 ug/mL)



[View online »](#)

ORF Nucleotide Sequence:

>RG212116 representing NM_006047
 Red=Cloning site Blue=ORF Green=Tags(s)

TTTTGTAATACGACTCACTATAGGGCGGCCGGAATTCGTCGACTGGATCCGGTACCGAGGAGATCTGCC
 GCCCGCATCGCC

ATGGCTGTGGTCATCCGTTTGAAGGTCTCCCAATTGTGGCGGGGACCATGGACATTCGCCACTTCTTCT
 CTGGATTGACCATTCTGATGGGGCGTGCATATTGTAGGGGTGAAGTGGGTGAGGCTTTCATCGTTTT
 TGCCACTGATGAAGATGCAAGGCTTGGTATGATGCGCACAGGTGGTACAATTAAGGGTCAAAAAGTAACA
 CTATTGTTGAGTAGTAAGACGGAATGCAGAATATGATTGAAGTGAAGTCTAGGCGTTTTGAACTGCCA
 ACTTAGATATACCACCAGCAAAATGCCAGTAGATCAGGACCACCACCTAGCTCAGGAATGAGTAGCAGGGT
 AAAGTGGCCACAACAGTATCCAACCTTAATAATCCATCACCCAGTGTAGTTACTGCCACCACCTTCTGTT
 CATGAAAGCAACAAAACATACAGACATTTCCACAGCCAGCGTAGGAACAGCTCCTCCAATATGGGGG
 CTTCTTTGGGAGCCCAACGTTTAGCTCAACTGTTCCAAGCACAGCTCTCCAATGAACACAGTCCCGCC
 GCCACCAATTCCTCAATTCAGCGATGCCATCTCTGCCACCAATGCCATCCATTCACCAATTCAGTT
 CCTCTCCAGTACCTACATTGCCTCCTGTGCCTCCTGTGCCCCGATTCCCCAGTTCCTTCTGTGCCAC
 CCATGACCCCACTGCCACCCATGTGGGATGCCGCCCTTGAATCCGCCACCTGTGGCACCTCTACCTGC
 TGGAAATGAATGGCTCTGGAGCACCTATGAATTTGAACAATAATCTGAATCCTATGTTTCTTGGTCCGTTG
 AATCCTGTTAACCTATCCAGATGAAGTCTCAGAGCAGTGTGAAGCCACTCCCATCAACCTGATGATC
 TGTATGTCAGTGTGCATGGAATGCCCTTTCTGCAATGGAAAATGATGTCAGAGATTTTTTTCATGGGCT
 CCGTGTGATGCAGTGCATTTGTTGAAAGATCATGTAGGTCGAAAATGGAATGGATTGGTTAAGTTT
 CTCTCCCTCAAGATACATTTGAAGCTTTGAAACGAAACAGAATGCTGATGATTCACCGCTATGTTGAA
 TTAGCCCTGCCACAGAAAGACAGTGGTGTGCTGCTGGAGCCATATCACTTTTAAGCAAAAATATGGGACC
 TTCTGGACAAAACATCCCTCCTCAGACACTTCCAGGTCAAAAATCGCCAGTGGGCAGAAAAGATCA
 AGGTCAAGATCACACATGAGGCTGGTTTTTGTGTTTACTTGAAGGGCTACCATTTGAAGCAGAAAACA
 AACATGTCATTGATTTTTTAAAAAGCTGGATATTGTGGAAGATAGTATTTATATAGCTTATGGACCCAA
 TGGGAAAGCAACTGGCGAAGGCTTTGTAGAGTTCAGAAATGAGGCTGACTATAAGGCTGCTCTGTGTCGT
 CATAAACAGTACATGGGCAATCGCTTTATTCAAGTTCATCCAATTAAGAAAGGTATGCTAGAAAAGA
 TAGATATGATTCGAAAAGACTGCAGAACTTCAGCTATGACCAGAGGGAAATGATACTAAATCCAGAGGG
 GGATGTCAACTCTGCCAAAGTCTGTGCCACATAACAAAATATCCATTACAGCATTACAAAAGATGGATGTT
 CTTAGTTCTAGAAAGGAATCCAGTGGATGAAAATGCTGTACATGTTCTTGTGATAACAAATGGGCAAG
 GTCTAGGACAGGATTGGTTTCAAGTTAAAAATGAAGATGATGCAGTAAGTCTGAACGTTACACCGTAA
 AAACTTAATGGGAGAGAAGCTTTTGTTCATGTAGTTACCTAGAAGATATGAGAGAGATTGAGAAAAAT
 CCCCTGCCCAAGGAAAAAGGGATTAAGATGCCTGTGCCAGGTAATCCTGCAGTTCCAGGAATGCCCA
 ATGCGGGACTGCCGGTGTGGGACTGCCAGTGCAGGACTTCCCGGTGCAGGCTGCCAGCACAGGACT
 GCCTGGTTCAGCAATAACAGTGCAGGACTGCCTGGTGCAGGAAATGCCAGTGCAGGAATACCTAGTGCA
 GGAGGTGAAGAGCATGCCTTCTGACTGTAGGATCAAAGGAAGCAATAATGGGCTCCATTTAACTTTC
 CTGGTAATTTTGGTGGATCAAATGCCTTTGGGCCACCAATCCCTCCTCCAGGATTAGGAGCGGGGCTT
 TGGTGTGCTAGGCTGGTATGCCTTCAAGTGGAAACAGTGGTTTGCCTGGTCTAGGACTGGATGTTCCG
 GGTTTTGGAGGTGGACCAACAATTTAAGTGGCCATCGGGATTTGGAGGGGGCCCTCAGAATTTTGAA
 ATGGCCCTGGTAGCTTAGGCGGTCCCGGGGTTTGAAGTGGCCCTCCTGGTCTTGAAGTGGCCCTGG
 GCATTTGGGTGGGCCACCAGCTTTGGGCTGGCCCGGCCCGGCCCGGCCCTGGCCCAATCCATATT
 GGTGGTCCCTGGCTTTGCATCTAGTTCTGAAAACAGGACCGACAGTAATTAAGTGCAAAACATGC
 CCTTTACTGTGTCTATTGATGAGATTTAGATTTCTTTATGGCTATCAAGTAATCCAGGCTCAGTGTG
 TTTAAAATACAATGAAAAGGTATGCCACAGGTGAAGCCATGGTGGCTTTGAGTCTCGGGATGAAGCC
 ACAGCTGTCTCATTGACTTAAATGACAGGCTATAGTTCAAGAAAAGTAAAACCTGTATTAGGG

ACGCGTACGCGGCCGCTCGAG – GFP Tag – GTTTAA

Protein Sequence: >RG212116 representing NM_006047
 Red=Cloning site Green=Tags(s)

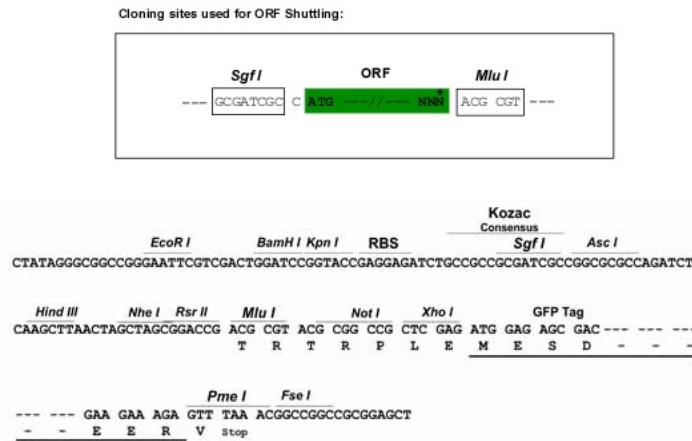
MAVVIRLQGLPIVAGTMDIRHFFSGLTIPDGGVHIVGGELGEAFIVFATDEDARLGMMRTGGTIKGSKVT
 LLLSSKTEMQNMIELSRRRFETANLDIPPANASRSGPPSSGMSSRVNLPPTVSNFNPPSPSVVTATTSV
 HESNKNIQTFSTASVGTAPPNMGASFGSPTFSSTVPTASPMNTVPPPIPPAMPPLPMPSPPIPV
 PPPVPTLPPVPPVPPIPPVPSVPPMTPLPPMSGMPLNPPPVAPLPAGMNGSGAPMNLNNLNPMFLGPL
 NPVNPIQMNSQSSVKPLPINPDDL YVSVHGMPPFSAMENDVRDFHGLRVDVHLLKDHVGRNNGNGLVKF
 LSPQDTFEALKRNRMLMIQRYVEVSPATERQVWAAGGHITFKQNMGPSGQTHPPQTLPRSKSPSGQKRS
 RSRSPHEAGFCVYLKGLPFEAENKHVIDFFKKLDIVEDSIYIAYGPNKATGEGFVEFRNEADYKAALCR
 HKQYMGNRFIQVHPITKKGMLEKIDMIRKRLQNF SYDQREMILNPEGDVNSAKVCAHITNIPFSITKMDV
 LQFLEGIPVDENAVHVLVDNNGQGLGQALVQFKNEDDARKSERLHRKKNGREAFVHVVTLEDMREIEKN
 PPAQGGKGLKMPVPGNPVPGMPNAGLPGVGLPSAGLPGAGLPSTGLPGSAITSAAGLPGAGMPSAGIPSA
 GGEEHAFLTVGSKEANNGPPFNFGNFGGSNAFGPPIPPPGLGGGAFGDARPGMPVGNGLPGLGLDVP
 FGGGGPNL SGPSGFGGGPQNFNGPGSLGGPPGFGSGPPGLGSAPGHLGGPPAFGPGPGPGPGPIHI
 GGPPGFASSSGKPGPTVIKVNMPFTVSIIDEILDFFYGYQVIPGSVCLKYNEKGMPTGEAMVAFESRDEA
 TAAVIDLNDRPIGSRKVKLVLG

TRTRPLE – GFP Tag – V

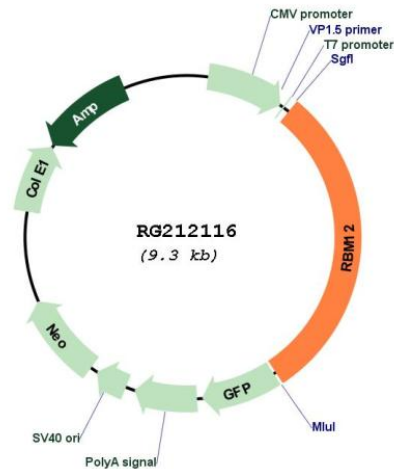
Restriction Sites:

SgfI-MluI

Cloning Scheme:



Plasmid Map:



ACCN: NM_006047

ORF Size: 2796 bp

OTI Disclaimer: The molecular sequence of this clone aligns with the gene accession number as a point of reference only. However, individual transcript sequences of the same gene can differ through naturally occurring variations (e.g. polymorphisms), each with its own valid existence. This clone is substantially in agreement with the reference, but a complete review of all prevailing variants is recommended prior to use. [More info](#)

OTI Annotation: This clone was engineered to express the complete ORF with an expression tag. Expression varies depending on the nature of the gene.

Components: The ORF clone is ion-exchange column purified and shipped in a 2D barcoded Matrix tube containing 10ug of transfection-ready, dried plasmid DNA (reconstitute with 100 ul of water).

Reconstitution Method:

1. Centrifuge at 5,000xg for 5min.
2. Carefully open the tube and add 100ul of sterile water to dissolve the DNA.
3. Close the tube and incubate for 10 minutes at room temperature.
4. Briefly vortex the tube and then do a quick spin (less than 5000xg) to concentrate the liquid at the bottom.
5. Store the suspended plasmid at -20°C. The DNA is stable for at least one year from date of shipping when stored at -20°C.

RefSeq: [NM_006047.6](#)

RefSeq Size: 6640 bp

RefSeq ORF: 2799 bp

Locus ID: 10137

UniProt ID: [Q9NTZ6](#)

Cytogenetics: 20q11.22

Domains: RRM

Gene Summary: This gene encodes a protein that contains several RNA-binding motifs, potential transmembrane domains, and proline-rich regions. This gene and the gene for copine I overlap at map location 20q11.21. Alternative splicing in the 5' UTR results in four transcript variants. All variants encode the same protein. [provided by RefSeq, Nov 2010]