

Product datasheet for **RG212113**

NCOR2 (NM_006312) Human Tagged ORF Clone

Product data:

Product Type:	Expression Plasmids
Product Name:	NCOR2 (NM_006312) Human Tagged ORF Clone
Tag:	TurboGFP
Symbol:	NCOR2
Synonyms:	CTG26; N-CoR2; SMAP270; SMRT; SMRTE; SMRTE-tau; TNRC14; TRAC; TRAC-1; TRAC1
Mammalian Cell Selection:	Neomycin
Vector:	pCMV6-AC-GFP (PS100010)
E. coli Selection:	Ampicillin (100 ug/mL)
ORF Nucleotide Sequence:	>RG212113 representing NM_006312 Red=Cloning site Blue=ORF Green=Tags(s)

TTTTGTAATACGACTCACTATAGGGCGGCCGGAATTCGTCGACTGGATCCGGTACCGAGGAGATCTGCC
GCC**CGATCGCC**

ATGTCGGGCTCCACACAGCCTGTGGCACAGACGTGGAGGGCCACTGAGCCCCGCTACCCGCCCCACAGCC
TTTCCTACCCAGTGCAGATCGCCCGGACGCACACGGACGTGGGGCTCCTGGAGTACCAGCACCCTCCCG
CGACTATGCTCCACCTGTCGCCGGCTCCATCATCCAGCCCCAGCGGGGAGGCCCTCCCTGCTGTCT
GAGTTCAGCCCCGGAATGAACGGTCCCAGGAGCTCCACCTGCGGCCAGAGTCCCACTCATACTGCCCG
AGCTGGGAAGTCAGAGATGGAGTTCATTGAAAGCAAGCGCCCTCGGCTAGAGCTGCTGCCTGACCCCT
GCTGCGACCGTACCCCTGCTGGCCACGGGCCAGCCTGCGGGATCTGAAGACCTACCAAGGACCGTAGC
CTGACGGGCAAGCTGGAACCGGTGTCTCCCCAGCCCCCGCACACTGACCCTGAGCTGGAGCTGGTGC
CGCCACGGCTGTCCAAGGAGGAGCTGATCCAGAACATGGACCGCGTGGACCGAGAGATCACCATGGTAGA
GCAGCAGATCTCTAAGCTGAAGAAGAAGCAGCAACAGCTGGAGGAGGAGGCTGCCAAGCCGCCGAGCCT
GAGAAGCCCGTGTACCGCCGCCATCGAGTCGAAGCACCGCAGCCTGGTGCAGATCATCTACGACGAGA
ACCGGAAGAAGGCTGAAGCTGCACATCGGATTCTGGAAGGCTGGGGCCCCAGGTGGAGCTGCCGCTGTA
CAACCAGCCCTCCGACACCCGGCAGTATCATGAGAACATAAAAATAAACCAGGCGATCGGAAGAAGCTA
ATCTTGTACTTCAAGAGGAGGAATCACGCTCGGAAACAATGGGAGCAGAAGTTCTGCCAGCGCTATGACC
AGCTCATGGAGGCTGGGAGAAGAAGTGGAGCGCATCGAGAACAACCCCGCGCGGGCCAAGGAGAG
CAAGGTGCGCGAGTACTACGAGAAGCAGTTCCTGAGATCCGCAAGCAGCGCGAGCTGCAGGAGCGCATG
CAGAGCAGGGTGGGCCAGCGGGCAGTGGGCTGTCCATGTGCGCCGCCCGCAGCGAGCACGAGGTGTGAG
AGATCATCGATGGCCTCTCAGAGCAGGAGAACCTGGAGAAGCAGATGCGCCAGCTGGCCGTGATCCCGCC
CATGCTGTACGACGCTGACCAGCAGCGCATCAAGTTCATCAACATGAACGGGCTTATGGCCGACCCCATG
AAGGTGTACAAAGACCGCCAGGTCATGAACATGTGGAGTGAAGGAGGAGACCTTCCGGGAGAAGT
TCATGCAGCATCCAAGAAGCTTTGGCCTGATCGCATATTCTGGAGAGGAAGACAGTGGCTGAGTGCCT
CCTCTATTACTACCTGACTAAGAAGAATGAGAATAAGAGCCTGGTGAAGCAGGAGCTATCGGCCCGCC



[View online »](#)

ACCACAACGCGGCCACCGCCATGGCCCAGCGAGCTGATATGCTGAGGGGCTCTCGCCCCGCGAGTCCTC
 GCTGGCACTCAACTACGCTGCGGGTCCCGAGGCATCATCGACCTGTCCCAAGTGCCACACCTGCCTGTG
 CTCGTGCCCCGACACCAGGCACCCAGCCACCGCCATGGACCGCTTGCTACCTCCCCACCGCGCCCC
 AGCCCTTCAGCAGCCGCCACAGCAGTCCCCACTCTCCCAGGAGGTCCAACACACTTGACAAAACCAAC
 CACCACGTCTCGTCCGAGCGGGAGCGAGACCGGGATCGAGAGCGGGACCGGGATCGGGAGCGGAAAAG
 TCCATCCTCACGTCCACCAGCAGGTGGAGCACGCCATCTGGAGACCTGGTACAGAGCAGAGCAGCG
 GCAGCAGCGGCAGCAGCGCGGGGTGGGGCAGCAGCAGCCGCCCGCCCTCCCCTCCCATGCCACCA
 GCACTCGCCCATCTCCCTCGGACCCAGGATGCCCTCCAGCAGAGACCCAGTGTGCTTCACAACACAGGC
 ATGAAGGGTATCATCACCGCTGTGGAGCCAGCACGCCACGGTCTGAGGTCCACCTCCACCTCCTCAC
 CCGTTCGCCCAGCTGCCACATCCACCTGCCACCACTGCCACTGGCGGCACCTCGATGGGGTCTA
 CCTACCTCATGGAGCCGTCTTGCTGCCAAGGAGGCCCGGGTGGCCGCGCAGAGCGGCCCGCA
 GCAGACACCGCCATGCCTTCTCGCAAGCCCCAGCCCGTCCGGGTGGAGCCCGCTCCTCCCCA
 GCAAGGGTCTGGAGCCCCGGCCCTAGTGCTCCTGTCTTGCCACGCCACCATCGCCCGACCCCTGC
 GAAGAACCTCGCACCTCACCAGCCAGCCGGACCCGGCGGCCACCTGCCTCGGCTCGGACCCGCAC
 CGGAAAAGACTCAAAGTAAACCTTTTCCATCCAGGAAGTGAAGTCCGTTCTCTGGGTACCACGGCA
 GCAGCTACAGCCCGAAGGGGTGGAGCCGTGAGCCCTGTGAGCTCACCAAGTGTGACCCACGACAGGG
 GCTCCCCAAGCACCTGGAAGAGCTCGACAAAGAGCCACCTGGAGGGGGAGCTGCGGCCAAGCAGCCAGGC
 CCCGTGAAGCTTGGCGGGGAGGCCCGCCACCTCCACACCTGCGGCCGTGCCTGAGAGCCAGCCCTCGT
 CCAGCCCGCTGCTCCAGACCGCCCCAGGGGTCAAAGGTACCAGCGGGTGGTACCCTGGCCAGACAT
 CAGTGAGGTATCACACAGGACTACACCCGGCACCACCACAGCAGCTCAGCGCACCCCTGCCCGCCCC
 CTCTACTCCTTCCTGGGGCAGCTGCCCCGTCTGGACTCCGCGCCACCCAGTGACCTTACTCTCC
 CGCCCCGGACCATGGTCCCCGGCCCGTGGCTCCCCCACAGCGAAGGGGGCAAGAGGTCTCCAGAGCC
 AAACAAGACGTCGGTCTTGGGTGGTGGTGGAGACGGTATTGAACCTGTGTCCCCACCGGAGGGCATGACG
 GAGCCAGGGCACTCCCGAGTGTGTACCCGCTGTGTACCGGATGGGGAACAGACGGAGCCAGGA
 TGGGCTCCAAGTCTCCAGGCAACACCAGCCAGCCGCGCCTTCTTACGCAAGCTGACCGAGAGCAACTC
 CGCCATGGTCAAGTCCAAGAAGCAAGAGATCAACAAGAAGCTGAACACCCACAACCGGAATGAGCTGAA
 TACAATATCAGCCAGCTGGGACGGAGATCTTCAATATGCCCGCCATCACCGGAACAGGCCTTATGACCT
 ATAGAAGCCAGGCGGTGCAGGAACATGCCAGCAACATGGGGTGGAGGCCATAATTAGAAAGGCACT
 CATGGGTAATATGACCAGTGGGAAGAGTCCCCGCGCTCAGCGCAATGCTTTTAAACCTCTGAATGCC
 AGTGCCAGCTGCCCGTGTATGCCATAAACCGCTGCTGACGGACGGAGTGACCACACACTCACCTCGC
 CAGGTGGCGGCGGAAGGCCAAGGTCTCTGGCAGACCCAGCAGCCGAAAAGCCAAGTCCCCGGCCCCGGG
 CCTGGCATCTGGGGACCGCCACCTCTGTCTCTCAGTGCACTCGGAGGGAGACTGCAACCGCCGACG
 CCGCTACCAACCGGTGTGGGAGGACAGGCCCTCGTCCGAGGTTCCACGCCATTCCCCTACAACCCCC
 TGATCATGCGGCTGCAGGCGGGTGTATGGCTTCCCCACCCACCGGGCTCCCCGCGGGCAGCGGGCC
 CCTCGTGGCCCCACCAGCCTGGGACGAGGAGCCAAAGCCACTGCTCTGCTCGCAGTACGAGACACTC
 TCCGACAGCGAG

ACGCGTACGCGGGCCGCTCGAG – GFP Tag – GTTTAA

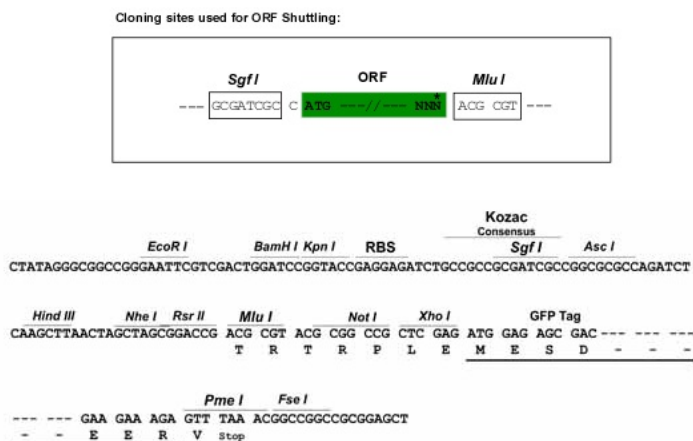
Protein Sequence: >RG212113 representing NM_006312
 Red=Cloning site Green=Tags(s)

```

MSGSTQPVAVTWRATEPRYPHSLSYPVQIARTHTDVGLLEYQHHSRDYASHLSPGSI IQPQRRRPSLLS
EFQPGNERSQELHLRPESHSYLPELGKSEMEFIESKRPRELELLPDLLRPSPLLATGQPAGEDLTKDRS
LTGKLEPVSPSPPHDPELELVPPRLSKEELIQNMDRVDREITMVEQQISKLKKKQQQLEEEAAKPPEP
EKPVSPPIESKHRSLVQIIYDENRKKAEAAHRILEGLGPOVELPLYNQPSDTRQYHENIKINQAMRKKL
ILYFKRRNHARKQWEQKFCQRYDQLMEAWKVERIENNRRAKESKVREYYEKQFPEIRKQRELQERM
QSRVGRGSGLSMSAARSEHEVSEIIDGLSEQENLEKQMRQLAVIPPMLYDADQQRIKF INMNGLMADPM
KVYKDRQVMNMWSEQEKETFREKFMQHPKNFGLIASFLERKTVAECVLYYYLTKKNENYKSLVRRSYRRR
GKSQQQQQQQQQQQQQQQMPRSSQEKEKEKEAEKEEKEPEVENDKEDLLKEKTDGSDND
EKEAVASKGRKTANSQGRKGRITRSMANEANSEEAITPQQSAELASMELNESSRWTEEMETAKKGLLE
HGRNWSAIARMVGSKTVSQCKNFYFNYKQRNLDLILQHKLMKEMERNARRKKKAPAAASEEAAFPV
VEDEEMASGVSNEEEMVEEAEALHASGNEVPRGECSPATVNNSSDTEIPSPHTEAAKDTGQNGPKP
PATLGADGPPPPPTPPPEDIPAPTEPTPASEATGAPTPPPAPPSPSAPPVVPKKEEKEETAAAPPVEE
GEEQKPPAAEELAVDTGKAEVPKSECTEEAEEGPAKGDAAEAEATAEGALKAKEKGGSGRATTAKSS
GAPQSDSSATCSADEVDEAEGGDKNRLSPRPSLLTPTGDPANASPKPLDLKQLKQRAAAIPIQVT
KVHEPPREDAAPTKPAPPAPPQNLQPEDAPQPGSSPRGKSRSPAPPADKKEKPVFFAFAAEAQKL
PGDPPCWTSGLPFPVPPREVIKASPHADPSAFSYAPPGHPLPLGLHDTARPVLPRPPTISNPPPLISSA
KHPSVLERQIGAIISQGMVQLHVPYSEHAKAPVGPVTMGLPLPMDPKKLPFSGVKQEQLSPRGQAGPE
SLGVPTAQEASVLRGTALGSPVGGSIITKGIPSTRVPSDAITYRGSITHGTPADVLKGTITRIIGEDSP
SRLDRGREDSLPKGHVIEGKKGHVLSYEGGMSVTQCSKEDGRSSSGPPHETAAPKRTYDMMEGRVGRAI
SSASIEGLMGRAIPPERHSPHHLKEQHHRGSIITQGI PRSYVEAQEDYLRREKLLKREGTTPPPPPSRD
LTEAYKTQALGPLKPKPAHEGLVATVKEAGRSIHEIPREELRHTPELPLAPRPLKEGSIITGTPLKYDTG
ASTTGSKKHDVRSLIGSPGRTFPPVHPLDVMADARALERACYEESLKSRRPGTASSSGSIIARGAPVIVPE
LGKPRQSPLTYEDHGAPFAGHLPRGSPVTTREPTPRLQEGSLSSSKASQDRKLTSTPREIAKSPHSTVPE
HHPHIISPYEHLRGSVGVLDYRSHIPLAFDPTSIPRGIPLDAAAAYLPRHLAPNPTYPHLYPPYLIRG
YPDAALENRQTIINDYITSQQMHNAATAMAQRADMLRGLSPRESSLALNYAAGPRGIIDLQVPHLPV
LVPTPTGTPATAMDRLAYLPTAPQPFSSRHSSSPLSPGGPHTLTKPTTSSSERERDRDRERDREREK
SILTSTTTVEHAPIWRPGTEQSSGSSGSSGGGGSSSRPASHSHAHQHSPISPRTDALQQRPSVLHNTG
MKGIIITAVEPSTPTVLRSTSTSSPVRPAATFPPATHCPLGGTLDGVYPTLMPEVLLPKEAPRVARPERPR
ADTGHAFLAKPPARSGLEPASSPSKGSERPLVPPVSGHATIARTPAKNLAPHHASPDPAPPASASDPH
REKTQSKPFSIQELELRSLYGHGSSYSPEGVEPVSPVSSPSLTHDKGLPKHLEELDKSHLEGELRPKQPG
PVKLGGEAAHLPHLRPLPESQSSSPLQTAGVKGHQRVVTLAQHISEVITQDYTRHHPQLSAPLPAP
LYSFPGASCPVLDLRRPPSDLYLPPPDHGAPARGSPHSEGGKRSPEPNKTSVLGGGEDGIEPVSPPEGMT
EPGHSRSVAVYPLL YRDGEQTEPRMGSKSPGNTSQPPAFFSKL TESNSAMVKSKKQEI NKLNTHNRNEPE
YNISQPGTEIFNMPAITGTGLM TYRSQAVQEHASTNMGLEA IIRKALMGKYDQWEE SPPLSANAFNPLNA
SASLPAAMPITAADGRSDHTLTPGGGGKAKVSGRPSRKA KSPAPGLASGDRPPSVSSVHSEGD CNRRT
PLTNRVWEDRPSSAGSTPFYINPLIMRLQAGVMASPPPPGLPAGSGPLAGPHHAWDEEPKPLLC SQYETL
SDSE
  
```

TRTRPLE - GFP Tag - V

Restriction Sites: SgfI-MluI

Cloning Scheme:


ACCN: NM_006312

ORF Size: 7572 bp

OTI Disclaimer: Due to the inherent nature of this plasmid, standard methods to replicate additional amounts of DNA in E. coli are highly likely to result in mutations and/or rearrangements. Therefore, OriGene does not guarantee the capability to replicate this plasmid DNA. Additional amounts of DNA can be purchased from OriGene with batch-specific, full-sequence verification at a reduced cost. Please contact our customer care team at custsupport@origene.com or by calling 301.340.3188 option 3 for pricing and delivery.

The molecular sequence of this clone aligns with the gene accession number as a point of reference only. However, individual transcript sequences of the same gene can differ through naturally occurring variations (e.g. polymorphisms), each with its own valid existence. This clone is substantially in agreement with the reference, but a complete review of all prevailing variants is recommended prior to use. [More info](#)

OTI Annotation: This clone was engineered to express the complete ORF with an expression tag. Expression varies depending on the nature of the gene.

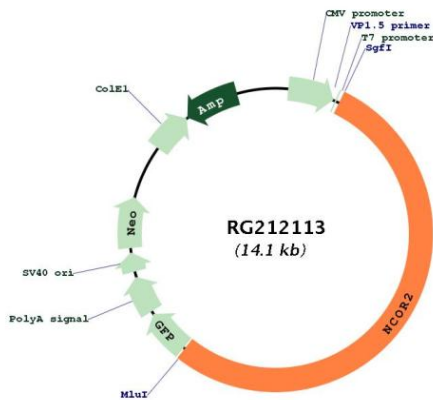
Components: The ORF clone is ion-exchange column purified and shipped in a 2D barcoded Matrix tube containing 10ug of transfection-ready, dried plasmid DNA (reconstitute with 100 ul of water).

Reconstitution Method:

1. Centrifuge at 5,000xg for 5min.
2. Carefully open the tube and add 100ul of sterile water to dissolve the DNA.
3. Close the tube and incubate for 10 minutes at room temperature.
4. Briefly vortex the tube and then do a quick spin (less than 5000xg) to concentrate the liquid at the bottom.
5. Store the suspended plasmid at -20°C. The DNA is stable for at least one year from date of shipping when stored at -20°C.

RefSeq:	NM_006312.4
RefSeq Size:	8857 bp
RefSeq ORF:	7545 bp
Locus ID:	9612
UniProt ID:	Q9Y618
Cytogenetics:	12q24.31
Protein Families:	Druggable Genome
Protein Pathways:	Notch signaling pathway
Gene Summary:	This gene encodes a nuclear receptor co-repressor that mediates transcriptional silencing of certain target genes. The encoded protein is a member of a family of thyroid hormone- and retinoic acid receptor-associated co-repressors. This protein acts as part of a multisubunit complex which includes histone deacetylases to modify chromatin structure that prevents basal transcriptional activity of target genes. Aberrant expression of this gene is associated with certain cancers. Alternate splicing results in multiple transcript variants encoding different isoforms.[provided by RefSeq, Apr 2011]

Product images:



Circular map for RG212113