

Product datasheet for **RG212106**

CAPRIN2 (NM_001002259) Human Tagged ORF Clone

Product data:

Product Type:	Expression Plasmids
Product Name:	CAPRIN2 (NM_001002259) Human Tagged ORF Clone
Tag:	TurboGFP
Symbol:	CAPRIN2
Synonyms:	C1QDC1; EEG-1; EEG1; RNG140
Mammalian Cell Selection:	Neomycin
Vector:	pCMV6-AC-GFP (PS100010)
E. coli Selection:	Ampicillin (100 ug/mL)
ORF Nucleotide Sequence:	>RG212106 representing NM_001002259 Red=Cloning site Blue=ORF Green=Tags(s)

TTTTGTAATACGACTCACTATAGGGCGGCCGGAATTCGTCGACTGGATCCGGTACCGAGGAGATCTGCC
GCC**CGATCGCC**

ATGGAAGTACAAGTATCTCAAGCATCATTGGGTTTCGAGCTCACTTCTGTGAAAAGAGTTAAGGGAGT
GGTCTAGACTTTCCAGGGAAGTTATTGCCTGGCTGTGTCCTCTAGTCCTAATTTTATACTTAACTTTCC
CCCACCTCCTCAGCCTCATCTGTTTCAATGGTCAACTCTTTTCATCCCCTTTGGTTACCAGTCACCT
TCAGGCCATTAGAGGAGAAAGAGAGGGGAATATGAAGTCAGCCAAGCCCAAGTGAACCACAGTCAGC
ATGGGAAAGCCAGCGGCCTTGAGCCCTGCAGTCTACTCTGAGTTCTGCTGCATCTCCTTCCAAGC
GTATGAGACCTATATTGAAAATGGACTCATATGCCTTAAACACAAAATTAGAAACATCGAGAAAAAGAG
CTCAAACTGGAGGATTATAAGGATCGCCTGAAAAGTGGAGAGCATCTTAATCCAGACCAGTTGGAAGCTG
TAGAGAAATATGAAGAAGTGCTACATAATTTGGAATTTGCCAAGGAGCTTCAAAAAACCTTTTCTGGGTT
GAGCCTAGATCTACTAAAAGCGCAAAAGAAGGCCAGAGAAGGGAGCACATGCTAAAACCTTGAGGCTGAG
AAGAAAAAGCTTCGAACTATACTTCAAGTTCAGTATGTATTGCAGAACTTGACACAGGAGCACGTACAAA
AAGACTTCAAAGGGGTTTGAATGGTGCAGTGTATTTGCCTTCAAAGAAGTACTACCTCATTAAAGTT
TTCAAACTGACCTGCCCTGAAAGAAATGAAAGTCTGAGTGTGAAGACCAGATGGAGCAGTCATCCTTG
TACTTTTGGACCTTTTGAAGGTAGTGAGAAAGCAGTGGTAGGAACGACATACAACACTTGAAGGAT
TACTGTCTAAATTGCTGAACTCAGGCTATTTTGAAGTATCCAGTTCCCAAAAATGCCAAGGAAAAGGA
AGTACCACTGGAGGAAGAAATGCTAATACAATCAGAGAAAAAACACAATTATCGAAGACTGAATCTGTC
AAAGAGTCAGAGTCTCTAATGGAATTTGCCAGCCAGAGATACAACCACAAGAGTTTCTTAACAGACGCT
ATATGACAGAAGTAGATTATTCAAACAACAAGGCGAAGAGCAACCTTGGGAAGCAGATTATGCTAGAAA
ACCAAATCTCCAAAACGTTGGGATATGCTTACTGAACCAGATGGTCAAGAGAAGAAACAGGAGTCCTTT
AAGTCCTGGGAGGCTTCTGGTAAGCACCAGGAGGTATCCAAGCCTGCAGTTTCTTAGAACAGAGGAAAC
AAGACACCTCAAACTCAGGTCTACTCTGCCGGAAGAGCAGAAGAAGCAGGAGATCTCCAATCCAAGCC
ATCTCCTAGCCAGTGAAGCAAGATACACCTAAATCCAAGCAGGATGTTCAAGAGGAACAAAAGAAA



[View online >](#)

CAGGAGACACCAAAGCTGTGGCCAGTTCAGCTGCAGAAAGAACAAGATCCAAAGAAGCAAACCTCAAAGT
 CTTGGACACCTTCCATGCAGAGCGAACAGAACACCACCAAGTTCATGGACCACTCCCATGTGTGAAGAACA
 GGATTCAAAACAGCCAGAGACTCCAAAATCCTGGGAAAACAATGTTGAGAGTCAAAAACACTCTTTAACA
 TCACAGTCACAGATTTCTCAAAGTCTGGGGAGTAGCTACAGCAAGCCTCATACCAAATGACCAGCTGC
 TGCCCAGGAAGTTGAACACAGAACCACAAAGATGTGCCTAAGCCTGTGCATCAGCCTGTAGTTCTTCCTC
 TACCCTTCCGAAGGATCCAGTATTGAGGAAAGAAAAACTGCAGGATCTGATGACTCAGATTCAAGGAAT
 TGTAACTTTATGCAAGAGTCTGTTCTTGACTTTGACAAACCTTCAAGTCAATTCACAGTCACAACCCGC
 CTTTCAGCTACTCCAGGTAGCCCCGTAGCATCTAAAGAACAATACTGTCCAGTCAAAGTGATTTTCTTCA
 AGAGCCGTTACAGGCTACTTCTTCTCCAGTACTTGTAGCTCAAATGCTTGCTTGGTTACTACCGATCAG
 GCTTCTTCTGGATCTGAAACAGAGTTTATGACCTCAGAGACTCCTGAGGCAGCAATCCCCCAGGCAAGC
 AACCGTCTTCACTAGCTTCTCAAATCCTCCCATGGCAAAGGGCTCTGAACAGGGCTTCCAGTCACTCC
 AGCAAGTAGTAGTTCAGTAACCATTAACACAGCACCCCTTCAAGCCATGCAGACAGTATTTAACGTTAAT
 GCACCTCTGCCTCCAGAAAAGAACAAGAAATAAAGAATCCCCTTATTCACCTGGCTACAATCAAAGTT
 TTACCACAGCAAGTACACAAACACCACCCAGTCCAAGTCCATCTATACATGTAGAACAACCTGTCCA
 TTCTCAAGAGACTGCAGCAAATTATCATCTGATGGAACATTTCAAGTAAGCAATGGTAGCCTTGCTTT
 TACCCAGCACAGCAAGTGTGTTTCCCAGACCTACTCAGCATTGTCAATAGCCGGGGATCTGTTAGAG
 GATGTAAGTTCGTTGGGAGATTAATAACCAATTCCTATCGGTCCCTGGTGGTTATAAAGGTTTTGATAC
 TTATAGAGGACTCCCTTCAATTTCCAATGGAAATTATAGCCAGCTGCAGTTCAGAGTAGAGATTTCT
 GGAGCACCTTATCCCAAAGGGATAATTTCCAGCAGTGTATAAGCGAGGAGGGACATCTGGTGGTCCAC
 GAGCAAATTCGAGAGCAGGGTGGAGTATTCTTCTCAGGTGAGCAGCCAGAAAGAGACAACGAAACCTT
 TAACAGTGGTACTCTGGACAAGGAGACTCCCAGTGCATGACCCCTGTGGATGTGCCAGTGACAAATCCA
 GCAGCCACCATACTGCCAGTACACGTCTACCCTGCCTCAGCAGATGCGAGTTGCCTTCTCAGCAGCCA
 GAACCTAATCTGGCCCTGGAACCTTAGACCAACCTATTGTGTTGATCTTCTGAAACAATTAGG
 AGAAACTTTTGTACTTTCAGCTTGGTAGATTTAATTGCCAGTGAATGGCACTTACGTTTTTCAATTTTTCAC
 ATGCTAAAGCTGGCAGTGAATGTGCCACTGTATGTCAACCTCATGAAGAATGAAGAGGTCTTGGTATCAG
 CCTATGCCAATGATGGTCTCCAGACCATGAAACTGCTAGCAATCATGCAATTCTCAGCTCTTCCAGGG
 AGACCAGATATGGTTACGTCTGCACAGGGGAGCAATTTATGGAAGTAGCTGGAAATATTCTACGTTTTCA
 GGCTATCTTCTTATCAAGAT

ACGCGTACGCGGCCGCTCGAG – GFP Tag – GTTTAA

Protein Sequence:

>RG212106 representing NM_001002259
 Red=Cloning site Green=Tags(s)

MEVQVSQASLGFELTSVEKSLREWSRLSREVIAWLCPSSPNFILNFPPPSASSVSMVQLFSSPFGYQSP
 SGHSEEREENMKSAPQVNHSHQHGESQRALSPLQSTLSSAASPSQAYETIENGLICLKHKIRNIEKKK
 LKLEDYKDRKSGEHLNPDQLEAVEKYEEVLHNLEFAKELQKTFSGLSLDLLKAQKKAQRREHMLKLEAE
 KKKLRTLILQVQYVLQNLQEHVQKDFKGLNGAVYLPKELDYLIKFSKLTCPERNESL SVEDQMEQSSL
 YFWDLLEGSEKAVVGTTYKHLKDLLSKLLNSGYFESIPVPKNAKEKEVPLEEEMLIQSEKKTQLSKTESV
 KESESLMEFAQPEIQPQEFLNRRYMTEVDYSNKQGEEQPWEADYARKPNLPKRWDMLTEPDGQEKQESF
 KSWEASGKHQEVSKPAVSLEQRKQDTSKLRSTLPEEQKKQEISKSKPSPSQWKQDTPKSKAGYVQEEQKK
 QETPKLWPVQLQKEQDPKQTPKSWTPSMQSEQNTTKSWTTPMCEEQDSKQPETPKSWENNVESQKHS
 LTSQSQISPKSWGAVATASLIPNDQLLPRKLNTEPKDVPKPVHQPVGSSSTLPKDPVLRKEKLQDLMTQIQGT
 CNFMQESVLDLDFKPSSAIPTSQPPSATPGSPVASKEQNLSSQSDFLQEPLQATSSPVTCCSNACLVTTDQ
 ASSGSETEFMTSETPEAAIPPGKQPSLASPNNPPMAKGSEQGFQSPASSSSVTINTAPFQAMQTVFNVN
 APLPPRKEQEIKESPYSPGYNQSFTTASTQTPPQCQLPSIHVEQTVHSQETAANYHPDGTIQVSNGLAF
 YPAQTNVFPRPTQPFVNSRGSVRGCTRGRLITNSYRSPGGYKGFDTYRGLPSISNGNSQLQFQAREYS
 GAPYQSQRDNFQQCYKRGSTGGPRANSRAGWSDSSQVSSPERDNETFNSGDSGQDSRSMTVPDVPVNTN
 AATILPVHVVYPLPQQMRVAFSAARTSNLAPGTLDPQIVFDLLNLLGETFDLQLGRFNCPVNGTYVYIFH
 MLKLAVNVPLVYVNLKNEEVLVSAYANDGAPDHETASNHAILQLFQGDQIWLRLHRGAIYGSWSKYSTFS
 GYLLYQD

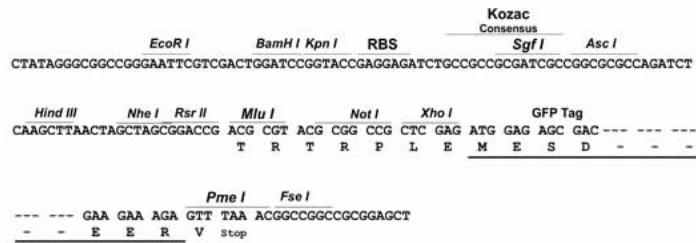
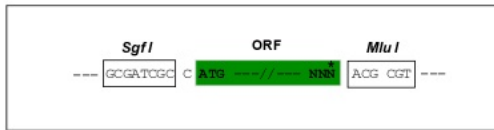
TRTRPLE – GFP Tag – V

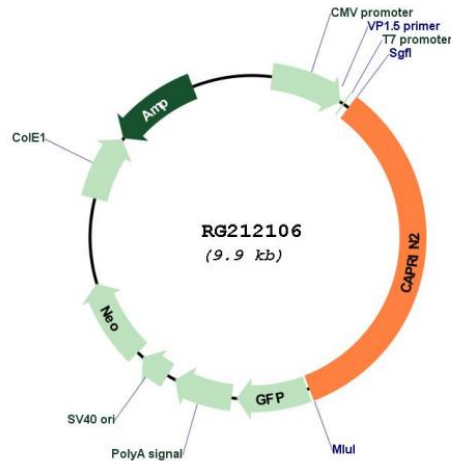
Restriction Sites:

SgfI-MluI

Cloning Scheme:

Cloning sites used for ORF Shuttling:



Plasmid Map:


ACCN: NM_001002259

ORF Size: 3381 bp

OTI Disclaimer: Due to the inherent nature of this plasmid, standard methods to replicate additional amounts of DNA in *E. coli* are highly likely to result in mutations and/or rearrangements. Therefore, OriGene does not guarantee the capability to replicate this plasmid DNA. Additional amounts of DNA can be purchased from OriGene with batch-specific, full-sequence verification at a reduced cost. Please contact our customer care team at custsupport@origene.com or by calling 301.340.3188 option 3 for pricing and delivery.

The molecular sequence of this clone aligns with the gene accession number as a point of reference only. However, individual transcript sequences of the same gene can differ through naturally occurring variations (e.g. polymorphisms), each with its own valid existence. This clone is substantially in agreement with the reference, but a complete review of all prevailing variants is recommended prior to use. [More info](#)

OTI Annotation: This clone was engineered to express the complete ORF with an expression tag. Expression varies depending on the nature of the gene.

Components: The ORF clone is ion-exchange column purified and shipped in a 2D barcoded Matrix tube containing 10ug of transfection-ready, dried plasmid DNA (reconstitute with 100 ul of water).

- Reconstitution Method:**
1. Centrifuge at 5,000xg for 5min.
 2. Carefully open the tube and add 100ul of sterile water to dissolve the DNA.
 3. Close the tube and incubate for 10 minutes at room temperature.
 4. Briefly vortex the tube and then do a quick spin (less than 5000xg) to concentrate the liquid at the bottom.
 5. Store the suspended plasmid at -20°C. The DNA is stable for at least one year from date of shipping when stored at -20°C.

RefSeq: [NM_001002259.2](#)

RefSeq Size: 4501 bp

RefSeq ORF: 3384 bp

Locus ID: 65981

UniProt ID: [Q6IMN6](#)

Cytogenetics: 12p11.21

Gene Summary: The protein encoded by this gene may regulate the transport of mRNA. It may play a role in the differentiation of erythroblasts. Multiple transcript variants encoding different isoforms have been found for this gene. [provided by RefSeq, Feb 2016]