

## Product datasheet for **RG212097**

### EPS15 (NM\_001981) Human Tagged ORF Clone

#### Product data:

Product Type:	Expression Plasmids
Product Name:	EPS15 (NM_001981) Human Tagged ORF Clone
Tag:	TurboGFP
Symbol:	EPS15
Synonyms:	AF-1P; AF1P; MLLT5
Mammalian Cell Selection:	Neomycin
Vector:	pCMV6-AC-GFP (PS100010)
E. coli Selection:	Ampicillin (100 ug/mL)



[View online »](#)

**ORF Nucleotide Sequence:**

>RG212097 representing NM\_001981  
 Red=Cloning site Blue=ORF Green=Tags(s)

TTTTGTAATACGACTCACTATAGGGCGGCCGGGAATTCGTGACTGGATCCGGTACCGAGGAGATCTGCC  
 GCC**CGCATCGCC**

ATGGCTGCGGCGGCCAGCTCTCTGACACAGTTATCAAGTGGGAATCCTGTATATGAAAAACTATA  
 GACAGGTTGATACAGGCAATACTGGAAGGGTGTGGCTTCTGATGCTGCTTTTCTGAAAAATCAGG  
 GCTTCCAGACTTGATACTTGAAAGATTTGGGATTTAGCCGACACAGATGGCAAAGGTATCCTGAACAAA  
 CAAGAATCTTTGTTGCTTTCGCTCTTGTGGCATGTGCCAGAATGGATTGGAAGTTTCACTAAGTAGTT  
 TGAACCTGGCTGTTCTCCACCAAGATTTATGATACCAGTAGTCCTTTGCTAATCAGTGGAACTCTGC  
 AGCTGAGCTCCCATGGGCTGTAACCTGAAGATAAGGCCAAATATGATGCAATATTTGATAGTTTAAAGC  
 CCAGTGAATGGATTTCTGTCTGGTGATAAAGTGAACCAAGTGTGCTCAACTCTAAGTTACCTGTGGATA  
 TCCTTGGAAAGATTTGGGAGTTGAGTGATTTGACCATGATGGAATGCTTGACAGAGATGAGTTTGCAGT  
 TGCCATGTTTTTGGTATACTGTGACTGGAGAAAGAACCTGTGCCAATGTCTTGGCTCCAGCCTTGGTG  
 CCACCATCTAAGAGAAAAACGTGGGTTGTATCCCTGCAGAAAAAGCTAAATATGATGAAATCTTCTCTGA  
 AAAGTATAAGATATGGACGGATTTGTGTCTGGATTGGAGGTCCGTGAAATATCTTGAACACAGGTTT  
 ACCTTCTACCTTACTAGCCCATATATGGTCATTATGCGACACAAAGGACTGTGGGAAGCTTTCAAAGGAT  
 CAGTTTGCCTTGGCTTTTCACTTAATCAGTCAGAAGTTAATCAAGGGCATTGATCCTCCTCACGTTCTTA  
 CTCCTGAAATGATTCCACCATCAGACAGGGCCAGTTTACAAAAGAATCATAGGATCAAGTCTGTTTGC  
 AGATTTCTCTGCTATTAAGGAAGTAGATACTCTTAACAATGAAATAGTTGACCTACAGAGGGAAAAGAA  
 AATGTGGAACAGGACCTTAAGGAGAAGGAAGATACTATTAACAGAGGACAAGTGAGGTTTCAAGTCTTC  
 AAGATGAAGTTCAAAGGAGAATACTAATCTGCAAAAACACAGGCCAGAAAACAGCAGGTACAGGAACT  
 CCTTGATGAACTGGATGAGCAGAAAAGCCAGCTGGAGGAGCAACTCAAGGAAGTCAGAAAAGAAATGTGCT  
 GAGGAGGCCCAACTGATCTCTTCTCTGAAAGCTGAATTAAGTGTAGGAAATCGCAGATCTCCACTTACG  
 AAGAAGAAATGGCAAAAGCTAGAGAAGAGCTGAGCCGTCTACAGCAAGAAACAGCAGAAATGGAGGAGAG  
 TGTAGAGTCAGGGAAGGCTCAGTTGGAACCTCTCAGCAGCACCTACAAGATTCACAACAGGAAATAGT  
 TCAATGCAAAAGAACTGATGGAATGAAAGATTTGGAAAATCATAATAGTCAGTTAAATGGTGCAGTA  
 GCCCACACAGCATTCTTGTAAACGGAGCTACAGATTATTGCAGCCTCAGCACCAGCAGCAGTGAACAGC  
 CAACCTTAATGAACATGTTGAAGGCCAGAGCAACCTAGAGTCTGAGCCCATACACCAGGAATCTCCAGCA  
 AGAAGTAGTCTGAACTACTGCCTTCTGGTGTGACTGATGAAAAAGAGGTGACTACAGCTGTTACTGAAA  
 AAGTTTGTCTGAACTCGACAATAATAGACATTCAAAGAGGAAGATCCATTTAATGTAGACTCAAGTTC  
 GCTGACAGGTCCAGTTGCAGATACAAACTTGGATTTTTTCCAGTCTGATCCTTTTGTGGCAGTATCCT  
 TTCAAGGATGATCCTTTTGGAAAATCGATCCATTTGGTGGTATCCTTTCAAAGGTTGAGATCCATTTG  
 CATCAGACTGTTTCTCAGGCAATCTACTGATCCTTTTGGCACTTCAAGCACTGACCCTTTCAGTGCAGC  
 CAACAATAGCAGTATTACATCGGTAGAAACGTTGAAGCACAATGATCCTTTTGTCTCTGGTGAACAGTT  
 GTTGCAGCAAGCGATTACGCCACAGACCCTTTGCTTCTGTTTTTGGGAATGAATCATTTGGAGGTGGAT  
 TTGCTGACTTCAGCACATTGTCAAAGGTCAACAATGAAGATCCTTTTCTGTTTCCAGCCACATCGAGCTGT  
 CAGCAACGTAGTGATTACAAAAATGTATTTGAGGAAACATCGGTCAAAGTGAAGATGAACCCCAAGCA  
 CTGCCACCAAGATCGGAACTCCAACAAGACCCTGCCCTTACCACCTGGGAAAAGATCCATCAACAAAT  
 TGGATTCTCTGATCCCTTTAAACTGAATGATCCATTTAGCCTTTCCAGGCAACGATAGCCCCAAAGA  
 AAAAGATCCTGAAATATTTGTGATCCATTCACTTCTGCTACTACCACTACCAATAAAGAGGCTGATCCA  
 AGCAATTTTGGCAACTTCAGTGTATCCCTCTGAAGAAGATATGATCGAATGGGCCAAGAGGGAAAAGTG  
 AGAGAGAGGAAGAGCAGAGGCTTGGCCGACTAAATCAGCAGGAACAAGAAGACTTAGAACTGGCTATTGC  
 ACTCAGCAAACTGAGATATCAGAAGCA

**ACGCGTACGCGGCCGCTCGAG** – GFP Tag – **GTTTAA**

Protein Sequence: >RG212097 representing NM\_001981  
 Red=Cloning site Green=Tags(s)

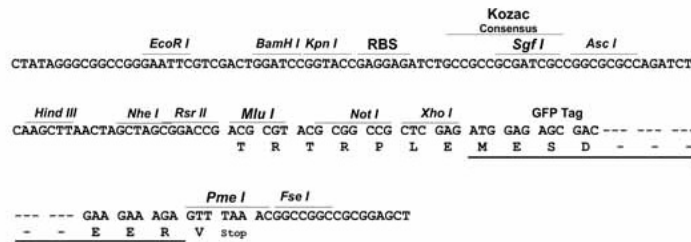
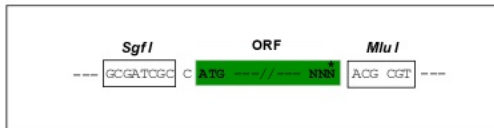
MAAAAQLSLTQLSSGNPVYEKYYRQVDTGNTGRVLASDAAAFLLKSGLPDLILGKIWDLADTDGKGILNK  
 QEFFVALRLVACAQNGLEVLSLNLAVPPPRFHDTSSPLLI SGTSAELPWAVKPEDKAKYDAIFDLSL  
 PVNGFLSGDKVKPVLLNSKLPVDILGRVWELSDIDHDGMLDRDEFAMFLVYCALEKEPVPMSLPPALV  
 PPSKRKTWVVSAPAEKAKYDEIFLKTDKMDG FVSGLEVREIFLKTGLPSTLLAHIWSLCDTKDCGKLSKD  
 QFALAFHLISQKLIKIGIDPPHVLTPMIPP SDRASLQKNIIGSSPVADFSAIKELDTLNNEIVDLQREKN  
 NVEQDLKEKEDTIKQRTSEVQDLQDEVQRENTNLQKLQAQKQQVQELDELDEQKAQLEEQLKEVRKKA  
 EEAQLISSLKAELTSQESQISTYEEELAKAREEL SRLQQETAEEESVESGKAQLEPLQQHLQDSQQEIS  
 SMQMKLMEMKDLNHNSQLNWCSSPHSILVNGATDYCSLSTSSSETANLNEHVEGQSNLESEPIHQESPA  
 RSSPELLPSGVTDENEVTTAVTEKVCSEL DNNRHSKEEDPFNVDSSSLTGPVADTNLDFQSDPFVGS  
 FKPDPFGKIDPFGGDPFKGSDPFASDCFFRQSTDPFATSSDPFSAANNSSITSVETLKHNDPFPAGGTV  
 VAASDSATDPFASVFGNESFGGGFADFSTL SKVNNEDPFRSATSSVSNVITKNVFEETS VKSEDEPPA  
 LPPKIGTPTRPCPLPPGKRSINKLDSPPFKLNDPFPFPNGDSPKEKDP EIFCDPFTSATTTTNKEADP  
 SNFANFSAYPSEEDMIEWAKRESEREEEQRLARLNQQEQEDLELAIALSKSEISEA

TRTRPLE - GFP Tag - V

Restriction Sites: SgfI-MluI

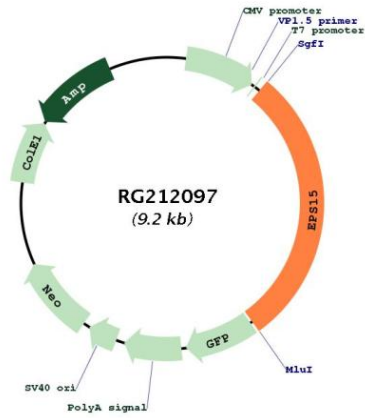
Cloning Scheme:

Cloning sites used for ORF Shuttling:



<b>ACCN:</b>	NM_001981
<b>ORF Size:</b>	2688 bp
<b>OTI Disclaimer:</b>	The molecular sequence of this clone aligns with the gene accession number as a point of reference only. However, individual transcript sequences of the same gene can differ through naturally occurring variations (e.g. polymorphisms), each with its own valid existence. This clone is substantially in agreement with the reference, but a complete review of all prevailing variants is recommended prior to use. <a href="#">More info</a>
<b>OTI Annotation:</b>	This clone was engineered to express the complete ORF with an expression tag. Expression varies depending on the nature of the gene.
<b>Components:</b>	The ORF clone is ion-exchange column purified and shipped in a 2D barcoded Matrix tube containing 10ug of transfection-ready, dried plasmid DNA (reconstitute with 100 ul of water).
<b>Reconstitution Method:</b>	<ol style="list-style-type: none"><li>1. Centrifuge at 5,000xg for 5min.</li><li>2. Carefully open the tube and add 100ul of sterile water to dissolve the DNA.</li><li>3. Close the tube and incubate for 10 minutes at room temperature.</li><li>4. Briefly vortex the tube and then do a quick spin (less than 5000xg) to concentrate the liquid at the bottom.</li><li>5. Store the suspended plasmid at -20°C. The DNA is stable for at least one year from date of shipping when stored at -20°C.</li></ol>
<b>RefSeq:</b>	<a href="#">NM_001981.3</a>
<b>RefSeq Size:</b>	5220 bp
<b>RefSeq ORF:</b>	2691 bp
<b>Locus ID:</b>	2060
<b>UniProt ID:</b>	<a href="#">P42566</a>
<b>Cytogenetics:</b>	1p32.3
<b>Domains:</b>	EH, EFh
<b>Protein Families:</b>	Druggable Genome
<b>Protein Pathways:</b>	Endocytosis
<b>Gene Summary:</b>	This gene encodes a protein that is part of the EGFR pathway. The protein is present at clatherin-coated pits and is involved in receptor-mediated endocytosis of EGF. Notably, this gene is rearranged with the HRX/ALL/MLL gene in acute myelogenous leukemias. Alternative splicing results in multiple transcript variants encoding distinct isoforms. [provided by RefSeq, May 2009]

Product images:



Circular map for RG212097