

Product datasheet for **RG212069**

HRK (NM_003806) Human Tagged ORF Clone

Product data:

Product Type: Expression Plasmids
Product Name: HRK (NM_003806) Human Tagged ORF Clone
Tag: TurboGFP
Symbol: HRK
Synonyms: DP5; HAKIRI
Mammalian Cell Selection: Neomycin
Vector: pCMV6-AC-GFP (PS100010)
E. coli Selection: Ampicillin (100 ug/mL)
ORF Nucleotide Sequence: >RG212069 representing NM_003806
Red=Cloning site Blue=ORF Green=Tags(s)

TTTGTAAATACGACTCACTATAGGGCGGCCGGAATTCGTCGACTGGATCCGGTACCGAGGAGATCTGCC
GCC**CGATCGCC**

ATGTGCCCGTGCCCCCTGCACCGCGGCCGCGCCCCCGGCCGTGTGCGCCTGCAGCGCGGGTCGCCTGG
GGCTGCGCTCGTCCGCCGCGCAGCTCACCGCGCCCGGCTCAAGGCGCTAGGCGACGAGCTGCACCGCG
CACCATGTGGCGCGCCGCGCGGAGCCGAGGGCGCCGCGCCCGGCGCGCTCCCACTACTGGCCT
TGGCTGTGCGCGCCGCGCAGGTGGCGCGCTGGCGCCTGGCTGCTCGGCAGCGGAATTG

ACGCGTACGCGGCCGCTCGAG - GFP Tag - GTTTAA

Protein Sequence: >RG212069 representing NM_003806
Red=Cloning site Green=Tags(s)

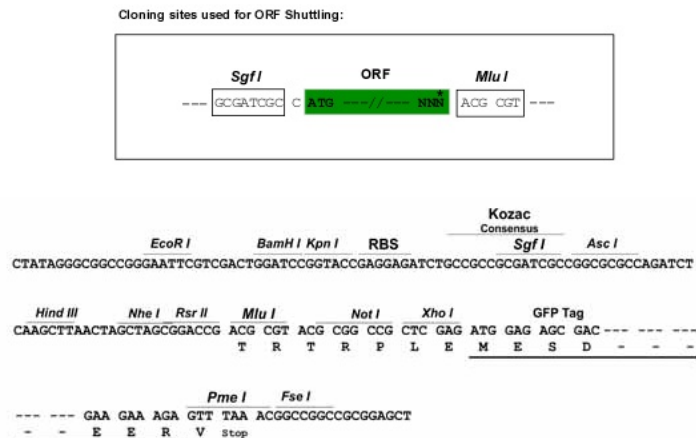
MCPCPLHRGRPPAVCACSGRLGLRSSAAQLTAARLKALGDELHQRTMWRRRARSRRAPAGALPTYWP
WLCAAAQVAALAAWLLGRRNL

TRTRPLE - GFP Tag - V

Restriction Sites: SgfI-MluI



[View online »](#)

Cloning Scheme:


ACCN: NM_003806

ORF Size: 273 bp

OTI Disclaimer: The molecular sequence of this clone aligns with the gene accession number as a point of reference only. However, individual transcript sequences of the same gene can differ through naturally occurring variations (e.g. polymorphisms), each with its own valid existence. This clone is substantially in agreement with the reference, but a complete review of all prevailing variants is recommended prior to use. [More info](#)

OTI Annotation: This clone was engineered to express the complete ORF with an expression tag. Expression varies depending on the nature of the gene.

Components: The ORF clone is ion-exchange column purified and shipped in a 2D barcoded Matrix tube containing 10ug of transfection-ready, dried plasmid DNA (reconstitute with 100 ul of water).

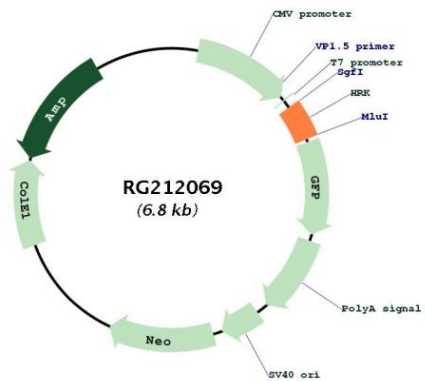
Reconstitution Method:

1. Centrifuge at 5,000xg for 5min.
2. Carefully open the tube and add 100ul of sterile water to dissolve the DNA.
3. Close the tube and incubate for 10 minutes at room temperature.
4. Briefly vortex the tube and then do a quick spin (less than 5000xg) to concentrate the liquid at the bottom.
5. Store the suspended plasmid at -20°C. The DNA is stable for at least one year from date of shipping when stored at -20°C.

Note: Plasmids are not sterile. For experiments where strict sterility is required, filtration with 0.22um filter is required.

RefSeq:	<u>NM_003806.4</u>
RefSeq Size:	716 bp
RefSeq ORF:	276 bp
Locus ID:	8739
UniProt ID:	<u>O00198</u>
Cytogenetics:	12q24.22
Protein Families:	Druggable Genome, Transmembrane
Gene Summary:	This gene encodes a member of the BCL-2 protein family. Members of this family are involved in activating or inhibiting apoptosis. The encoded protein localizes to intracellular membranes. This protein promotes apoptosis by interacting with the apoptotic inhibitors BCL-2 and BCL-X(L) via its BH3 domain. Alternate splicing results in multiple transcript variants. [provided by RefSeq, Oct 2012]

Product images:



Circular map for RG212069