

Product datasheet for **RG212055**

BCL2 (NM_000657) Human Tagged ORF Clone

Product data:

Product Type: Expression Plasmids
Product Name: BCL2 (NM_000657) Human Tagged ORF Clone
Tag: TurboGFP
Symbol: BCL2
Synonyms: Bcl-2; PPP1R50
Vector: pCMV6-AC-GFP (PS100010)
E. coli Selection: Ampicillin (100 ug/mL)
Cell Selection: Neomycin
ORF Nucleotide Sequence: >RG212055 representing NM_000657
Red=Cloning site Blue=ORF Green=Tags(s)

TTTTGTAATACGACTCACTATAGGGCGCCGGGAATTCGTCGACTGGATCCGGTACCGAGGAGATCTGCC
GCC**CGGATCGCC**

ATGGCGCACGCTGGGAGAACAGGGTACGATAACCGGGAGATAGTGATGAAGTACATCCATTATAAGCTGT
CGCAGAGGGGCTACGAGTGGGATGCGGGAGATGTGGGCGCCGCCCGCCCGGGGGCCCGCCCGCACCGGG
CATCTTCTCCTCCAGCCCGGGACACGCCCCATCCAGCCGCATCCCGGGACCCGGTCGCCAGGACCTCG
CCGCTGCAGACCCCGGCTGCCCGCGCGCCGCGGGGCTGCGCTCAGCCCGGTGCCACTGTGGTCC
ACCTGACCCTCCGCCAGGCCGGCGACGACTTCTCCCGCCGCTACCGCCGCGACTTCGCCGAGATGTCCAG
CCAGCTGCACCTGACGCCCTTACCGCGCGGGGACGCTTTGCCACGGTGGTGGAGGAGCTTTCAGGGAC
GGGGTGAAGTGGGGGAGGATTGTGGCCTTCTTTGAGTTCGGTGGGGTCAATGTGTGTGGAGAGCGTCAACC
GGGAGATGTCGCCCTGGTGGACAACATCGCCCTGTGGATGACTGAGTACCTGAACCGGCACCTGCACAC
CTGGATCCAGGATAACGGAGGCTGGGTAGGTGCACTTGGTGATGTGAGTCTGGGC

ACGCGTACGCGGCCGCTCGAG - GFP Tag - GTTTAA

Protein Sequence: >RG212055 representing NM_000657
Red=Cloning site Green=Tags(s)

MAHAGRTGYDNREIVMKYIHYKLSQRGYEWDAGDVGAAPPGAAPAPGIFSSQPGHTPHPAASRPDVARTS
PLQTPAAPGAAAGPALSPVPPVVHLTLRQAGDDFRRYRRDFAE MSSQLHLTPFTARGRFATVVEELFRD
GVNWGRIVAFEFGGVMCVESVNREMSPLVDNIALWMTEYLNRLHHTWIQDNGGWVWVWALGDVSLG

TRTRPLE - GFP Tag - V

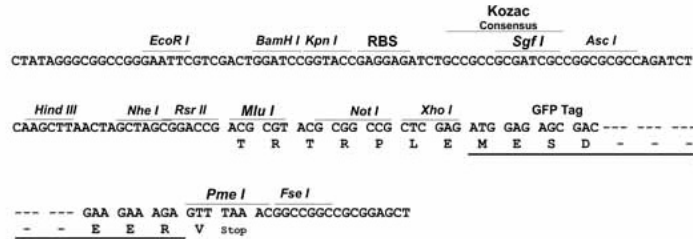
Restriction Sites: SgfI-MluI



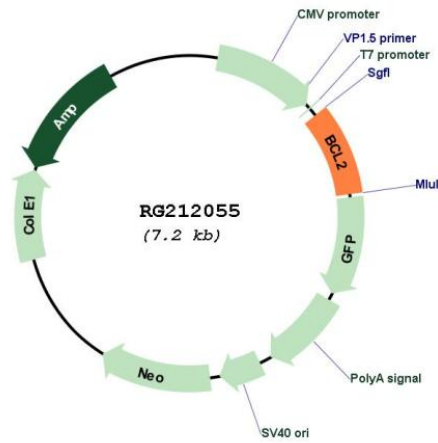
[View online »](#)

Cloning Scheme:

Cloning sites used for ORF Shutting:



Plasmid Map:



ACCN: NM_000657
 ORF Size: 615 bp

OTI Disclaimer:	<p>Due to the inherent nature of this plasmid, standard methods to replicate additional amounts of DNA in E. coli are highly likely to result in mutations and/or rearrangements. Therefore, OriGene does not guarantee the capability to replicate this plasmid DNA. Additional amounts of DNA can be purchased from OriGene with batch-specific, full-sequence verification at a reduced cost. Please contact our customer care team at custsupport@origene.com or by calling 301.340.3188 option 3 for pricing and delivery.</p> <p>The molecular sequence of this clone aligns with the gene accession number as a point of reference only. However, individual transcript sequences of the same gene can differ through naturally occurring variations (e.g. polymorphisms), each with its own valid existence. This clone is substantially in agreement with the reference, but a complete review of all prevailing variants is recommended prior to use. More info</p>
OTI Annotation:	<p>This clone was engineered to express the complete ORF with an expression tag. Expression varies depending on the nature of the gene.</p>
Components:	<p>The ORF clone is ion-exchange column purified and shipped in a 2D barcoded Matrix tube containing 10ug of transfection-ready, dried plasmid DNA (reconstitute with 100 ul of water).</p>
Reconstitution Method:	<ol style="list-style-type: none">1. Centrifuge at 5,000xg for 5min.2. Carefully open the tube and add 100ul of sterile water to dissolve the DNA.3. Close the tube and incubate for 10 minutes at room temperature.4. Briefly vortex the tube and then do a quick spin (less than 5000xg) to concentrate the liquid at the bottom.5. Store the suspended plasmid at -20°C. The DNA is stable for at least one year from date of shipping when stored at -20°C.
RefSeq:	NM_000657.3
RefSeq Size:	1207 bp
RefSeq ORF:	618 bp
Locus ID:	596
UniProt ID:	P10415
Cytogenetics:	18q21.33
Protein Families:	Druggable Genome, ES Cell Differentiation/IPS, Stem cell - Pluripotency, Transmembrane
Protein Pathways:	Amyotrophic lateral sclerosis (ALS), Apoptosis, Colorectal cancer, Focal adhesion, Neurotrophin signaling pathway, Pathways in cancer, Prostate cancer, Small cell lung cancer
Gene Summary:	<p>This gene encodes an integral outer mitochondrial membrane protein that blocks the apoptotic death of some cells such as lymphocytes. Constitutive expression of BCL2, such as in the case of translocation of BCL2 to Ig heavy chain locus, is thought to be the cause of follicular lymphoma. Alternative splicing results in multiple transcript variants. [provided by RefSeq, Feb 2016]</p>