

Product datasheet for **RG212046**

SOX6 (NM_033326) Human Tagged ORF Clone

Product data:

Product Type:	Expression Plasmids
Product Name:	SOX6 (NM_033326) Human Tagged ORF Clone
Tag:	TurboGFP
Symbol:	SOX6
Synonyms:	HSSOX6; SOXD; TOLCAS
Mammalian Cell Selection:	Neomycin
Vector:	pCMV6-AC-GFP (PS100010)
E. coli Selection:	Ampicillin (100 ug/mL)



[View online »](#)

ORF Nucleotide
Sequence:

>RG212046 representing NM_033326
Red=Cloning site Blue=ORF Green=Tags(s)

TTTTGTAATACGACTCACTATAGGGCGGCCGGAATTCGTCGACTGGATCCGGTACCGAGGAGATCTGCC
GCC**CGGATCGCC**

ATGTCTTCCAAGCAAGCCACCTCTCCATTTGCCTGTGCAGCTGATGGAGAGGATGCAATGACCCAGGATT
TAACCTCAAGGGAAAAGGAAGAGGGCAGTGATCAACATGTGGCCTCCCATCTGCCTCTGCACCCATAAT
GCACAACAAACCTCACTCTGAGGAGCTACCAACACTTGTCACTACCATTCAACAAGATGCTGACTGGGAC
AGCGTTCTGTCATCTCAGCAAAGAATGGAATCAGAGAATAATAAGTTATGTTCCCTATATTCCTTCGGAA
ATACCTCTACCTCACCACATAAGCCTGACGAAGGGAGTCGGGACCGTGAGATAATGACCAGTGTTACTTT
TGGAAACCCAGAGCGCCGAAAGGGAGTCTTCCGATGTGGTGGACACTGAAACAGAAGAAGCTTGAG
GAAATGACTCGGACTGAACAAGAGGATTCCTCCTGCATGGAAAACTACTTTCAAAGATTGGAAGGAAA
AAATGGAAAGACTAAATACCAGTGAACCTTGGAGAAAATAAAGGTACACCTGAGAGCCTGGCAGAAAA
AGAACGGCAGCTCTCCACATGATTACCCAGCTGATCAGTTTACGGGAGCAGCTACTGGCAGCGCATGAT
GAACAGAAAAAATGGCAGCGTCACAAAATTGAGAAACAACGGCAGCAAAATGGACCTTGCTCGCCAACAGC
AAGAACAGATTGCGAGACAACAGCAGCAACTTCTGCAACAGCAGCACAAAATTAATCTCCTCGAGCAACA
GATCCAGGTTTCAGGGTCACATGCCTCCGCTCATGATCCCAATTTTTCCACATGACCAGCGGACTCTGGCA
GCAGCTGCTGCTGCCAACAGGGATTCTCTTCCCCCTGGAAATAACATACAAACCAGGTGATAACTACC
CCGTACAGTTCATTCCATCAACAATGGCAGCTGCTGCTGCTTCTGGACTCAGCCCTTACAGCTCCAGAA
GGGTCACTGCTCCACCCACAAATTAACCAAAGGCTAAAGGGCCTAAGTGACCGTTTTGGCAGGAATTTG
GACACCTTTGAACATGGTGGTGGCCACTTTACAACCAACAGATTGAGCAGCTCTATGCCGCTCAGC
TGGCCAGCATGCAGGTGCACCTGGAGCAAAGATGCCATCAACTCCACAGCCACCAACACAGCAGGGAC
GGTCTCACCTACTGGGATAAAAAATGAAAAGAGAGGGACCAGCCCTGTAAGTCAAGTTAAGGATGAAGCA
GCAGCACAGCCTCTGAATCTCTCATCCCGACCCAGACAGCAGAGCCTGTAAAGTCCCAACGTCTCCCA
CCCAGAACCTTCTCCAGCCAGCAAAACCAGCCCTGTCAATCTGCCAAACAAAAGCAGCATCCCTAGCCC
CATTGGAGGAAGCCTGGGAAGAGGATCCTCTTTAGATATCCTATCTAGTCTCAACTCCCCTGCCCTTTT
GGGGATCAGGATACAGTGATGAAAGCCATTTCAGGAGGCGCGGAAGATGCGAGAGCAGATCCAGCGGGAGC
AACAGCAGCAACAGCCACATGGTGTGACGGGAACTGCTCCTCCATAAATAATATGGGGCTGAACAGCTG
CAGGAATGAAAAGGAAAGAACCGCTTTGAGAATTTGGGGCCCCAGTTAACGGGAAAGTCAAATGAAGAT
GGAAAACCTGGGCCAGGTGTCATCGACCTTACTCGGCCAGAAGATGCAGAGGGAGGTGCCACTGTGGCTG
AAGCACGAGTCTACAGGGACGCCCGCGCGCTGCCAGCAGCAGCCACACATTAAGCGACCAATGAATGC
ATTCATGGTTTGGGCAAAGGATGAGAGGAGAAAAATCCTTCAGGCCTTCCCGACATGCATAACTCCAAC
ATTAGCAAAATCTTAGGATCTCGCTGGAATCAATGTCCAACCAGGAGAAGCAACCTTATTATGAAGAGC
AGGCCCGGCTAAGCAAGATCCACTTAGAGAAGTACCCAACTATAAATACAAACCCCGACCGAAACGCAC
CTGCATTGTTGATGGCAAAAAGCTTCGGATTGGGGAGTATAAGCAACTGATGAGGTCTCGGAGACAGGAG
ATGAGGCAGTTCTTTACTGTGGGCAACAGCCTCAGATTCCAATCACCACAGGAACAGGTGTTGTGTATC
CTGGTGTATCACTATGGCAACTACCACACCATCGCCTCAGATGACATCTGACTGCTCTAGCACCTCGGC
CAGCCCCGAGCCAGCCTCCCGTCAATCCAGAGCACTTATGGTATGAAGACAGATGGCGGAAGCCTAGCT
GGAAATGAAATGATCAATGGAGAGGATGAAATGGAAATGTATGATGACTATGAAGATGACCCCAATCAG
ACTATAGCAGTGAATGAAGCCCCGGAGGCTGTCAAGTCCCAAC

ACCGTACGCGGCCGCTCGAG - GFP Tag - GTTTAA

Protein Sequence: >RG212046 representing NM_033326
 Red=Cloning site Green=Tags(s)

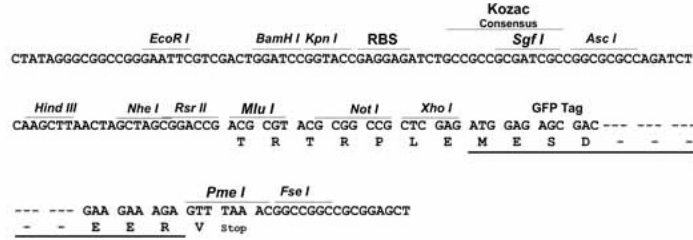
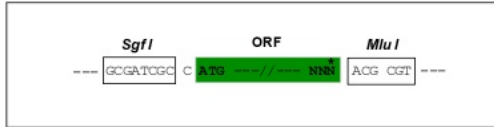
```
MSSKQATSPFACAADGEDAMTQDLTSREKEEGSDQHVASHLPLHPIMHNKPHSEELPTLVSTIQDADWD
SVLSSQQRMESENKLCSLYSFRNTSTSPHKPDEGSRDREIMTSVTFGTPERRKGLADVVDTLKQKLE
EMTRTEQEDSSCKEKLKSKDWKEKMERLNTSELLGEIKGTPESLAEKERQLSTMITQLISLREQLLAHD
EQKKLAASQIEKQRQMDLARQQEQIARQQQLLQQQHKINLLQQQIQVQGHMPPLMIPIFPHDQRTLA
AAAAAQGGFLFPPGITYKPGDNYPVQFIPSTMAAAAASGLSPLQLQKGHVSHPQINQRLKGLSDRFGRNL
DTFEHGGGHSYNHKQIEQLYAAQLASMQVSPGAKMPSTPQPNTAGTVSPTGIKNEKRGTSPTVQVDEA
AAQPLNLSSRPKTAEPVKSPTSPTQNLFPASKTSPVNLPNKSSIPSPIGGSLGRGSSLDILSSLNSPALF
GDQDVTMKAIQEARKMREIQREQQQQPHGVDGKLSSINNMGLNSCRNEKERTRFENLGPQLTGKSNED
GKLGPGVIDLTRPEDAEGGATVAEARVYRDARGRASSEPHIKRPMNAFMVWAKDERRKILQAFPMHNSN
ISKILGSRWKSMSNQEKQPYEEQARLSKIHLEKYPNYKYKPRPKRTCIVDGKCLRIGEYKQLMRSRRQE
MRQFFTVGQQPQIPITTTGTGVVYPGAIMATTTTPSQMTSDCSSTSASPEPSLPVIQSTYGMKTDGGSLA
GNEMINGEDEMEMYDDYEDDPKSDYSSENEAPEAVSAN
```

TRTRPLE - GFP Tag - V

Restriction Sites: Sgfl-Mlul

Cloning Scheme:

Cloning sites used for ORF Shutting:



ACCN: NM_033326

ORF Size: 2424 bp

OTI Disclaimer: Due to the inherent nature of this plasmid, standard methods to replicate additional amounts of DNA in E. coli are highly likely to result in mutations and/or rearrangements. Therefore, OriGene does not guarantee the capability to replicate this plasmid DNA. Additional amounts of DNA can be purchased from OriGene with batch-specific, full-sequence verification at a reduced cost. Please contact our customer care team at custsupport@origene.com or by calling 301.340.3188 option 3 for pricing and delivery.

The molecular sequence of this clone aligns with the gene accession number as a point of reference only. However, individual transcript sequences of the same gene can differ through naturally occurring variations (e.g. polymorphisms), each with its own valid existence. This clone is substantially in agreement with the reference, but a complete review of all prevailing variants is recommended prior to use. [More info](#)

OTI Annotation: This clone was engineered to express the complete ORF with an expression tag. Expression varies depending on the nature of the gene.

Components: The ORF clone is ion-exchange column purified and shipped in a 2D barcoded Matrix tube containing 10ug of transfection-ready, dried plasmid DNA (reconstitute with 100 ul of water).

Reconstitution Method:

1. Centrifuge at 5,000xg for 5min.
2. Carefully open the tube and add 100ul of sterile water to dissolve the DNA.
3. Close the tube and incubate for 10 minutes at room temperature.
4. Briefly vortex the tube and then do a quick spin (less than 5000xg) to concentrate the liquid at the bottom.
5. Store the suspended plasmid at -20°C. The DNA is stable for at least one year from date of shipping when stored at -20°C.

RefSeq: [NM_033326.3](#), [NP_201583.2](#)

RefSeq Size: 5048 bp

RefSeq ORF: 2427 bp

Locus ID: 55553

UniProt ID: [P35712](#)

Cytogenetics: 11p15.2

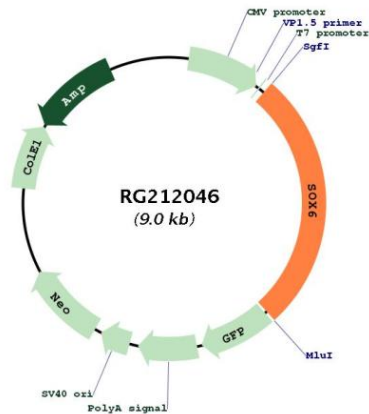
Domains: HMG

Protein Families: Transcription Factors

Gene Summary:

This gene encodes a member of the D subfamily of sex determining region y-related transcription factors that are characterized by a conserved DNA-binding domain termed the high mobility group box and by their ability to bind the minor groove of DNA. The encoded protein is a transcriptional activator that is required for normal development of the central nervous system, chondrogenesis and maintenance of cardiac and skeletal muscle cells. The encoded protein interacts with other family members to cooperatively activate gene expression. Alternative splicing results in multiple transcript variants.[provided by RefSeq, Mar 2009]

Product images:



Circular map for RG212046