

Product datasheet for **RG212019**

WIPF1 (NM_001077269) Human Tagged ORF Clone

Product data:

Product Type:	Expression Plasmids
Product Name:	WIPF1 (NM_001077269) Human Tagged ORF Clone
Tag:	TurboGFP
Symbol:	WIPF1
Synonyms:	PRPL-2; WAS2; WASPIP; WIP
Mammalian Cell Selection:	Neomycin
Vector:	pCMV6-AC-GFP (PS100010)
E. coli Selection:	Ampicillin (100 ug/mL)



[View online »](#)

ORF Nucleotide Sequence:

>RG212019 representing NM_001077269
 Red=Cloning site Blue=ORF Green=Tags(s)

TTTTGTAATACGACTCACTATAGGGCGGCCGGGAATTCGTCGACTGGATCCGGTACCGAGGAGATCTGCC
 GCC**CGGATCGCC**

ATGCCTGTCCCTCCCCCTCCAGCACCCCGCCGCCCCCGACGTTTGCCTGGCCAATACAGAGAAGCCTA
 CCTTGAATAAGACAGAGCAGGCTGGGAGAAATGCTCTCCTTTCTGATATCAGCAAAGGGAAGAACTAAA
 GAAGACGGTACCAATGACAGAAGTGCACCAACTGGACAAACCTAAAGGAGCTGGTGGTGGAGCGGT
 GGTGGTGGCTTTGGTGGAGGCGCGGATTTGGCGGAGGAGGTGGTGGCGGAGCGGTGGAAGTTTGGAG
 GGGGGCGACCTCCAGGTCTGGGAGGATTGTTCCAGGCTGGAATGCCAAGCTGAGATCCACGGCCAACAG
 GGATAATGATTCTGGAGGAAGCCGACCACCATTGTTGCCACCGGGAGGAAGATCCACATCTGCGAAACCC
 TTTTACCCCCAAGTGGCCAGGAGGTTTCTGTGCCTTCTCCAGGCCACAGAAGTGGTCCCCCAGAGC
 CTCAGAGGAACCGAATGCCGCCCAAGGCCGACGTGGGCTCAAAGCCTGATAGCATTCTCTCCAGT
 ACCTAGTACTCCAAGACCCATTCATCAAGTCCGCACAACCGGGGTCCCACCAGTGCCCGGAGGCCCC
 AGGCAGCCAGCCCCGGGCCACTCCTCCCCCTTCCCTGGAAACCGCGCACTGCTTTGGGAGGAGGCT
 CAATACGTCAGTCCCCCTTGAGCTCCTCCTCGCCCTTCTCCAACCGGCCTCCCCTGCCGCCTACCCCCAG
 CAGGGCCTTGATGACAAACCCCTCCACCACCTCCTCCAGTGGGCAACAGGCCCTCCATCCACAGGGAA
 GCGGTTCCCCCTCCTCCTCCTCAGAACAAAGCCTCCAGTGCCTTCCACTCCGCGGCCTTCGGCCTCCT
 CACAGGCCACCTCCGCGCCACTCCAGCAGGCCCGGGCCGCTCCTCTGCCTCAAAGTTCAGCGG
 CAATGACGAAACCCCAAGACTCCACAGCGAATCTGTCCCTCAGTTCGTCACGCCCCGTTACCTTCG
 CCAGGACGTTCAGTCTCTTCTCCCCGCCAGTGAAGACCCCACTCCAGTGAAGGACCCCGCAG
 GCCGATCAGGCCCTCCACCACCTCCTCCAGTAAGCAGAAACCGCAGCACATCTCGGGCCTGCCTGC
 TACCCCTCAGTTGCCATCCAGGAGTGGAGTAGACAGTCCAGGAGTGGACCCAGGCTCCCCTTCTCCT
 GATAGGCCAGTCTGGGACCTCCCCACCTCCACCATCAACATCTATTAGAAATGGCTTCAAAGACT
 CTCCATGTGAAGATGAGTGGGAAAGCAGATTCTACTTCCATCCGATTTCCGATTTGCCACCTCCAGAGCC
 ATATGTACAAACGACCAAAGTTATCCAGCAAAGTGGCAAGAAACGAAAGCCGGAGTGGATCCAACCGA
 AGAGAAAGGGGTGCTCCACCCTCCCTCCATCCCGAGG

ACGCGTACGCGGCCGCTCGAG – GFP Tag – GTTTAA

Protein Sequence:

>RG212019 representing NM_001077269
 Red=Cloning site Green=Tags(s)

MPVPPPPAPPPPTFALANTEKPTLNKTEQAGRNALLSDISKGKLLKKTVTNDRSAPILDKPKGAGAGGG
 GGGFGGGGGFGGGGGGGGSGGGGPPGLGGLFQAGMPKLRSTANRDNDSGGSRPPLLPPGGRSTSAKP
 FSPPSGRFPVPSGHRSGPPEPQRNRMPPRPDVGSKPDSIPPPVPSTPRPIQSSPHNRGSPVPVGGP
 RQPSGPTPPFPNGRGTALGGGSIHQSPSSSFP SNRPPLPPTPSRALDDKPPPPPPVGNRPSIHRE
 AVPPPPQNNKPPVPSTPRPSASSQAPPPPPSRPGPPPLPSSSGNDETPRLPQRNLSLSSSTPLPS
 PGRSGPLPPPSERPPPPVRDPPGRSGPLPPPPVSRNGSTSRALPATPQLPSRSGVDSRSPRPPLPP
 DRPSAGAPPPPPSTIRNGFQDSPCEDEWESRFYFHPISDLPPPEPVVQTTKSYPKLNRESRSGSNR
 RERGAAPLPIPR

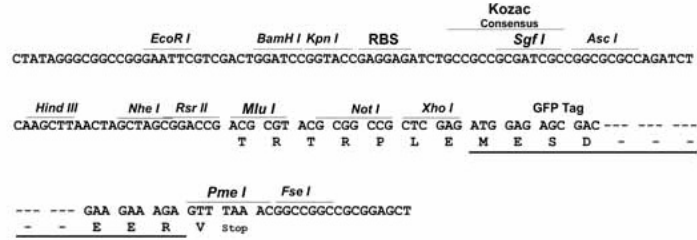
TRTRPLE – GFP Tag – V

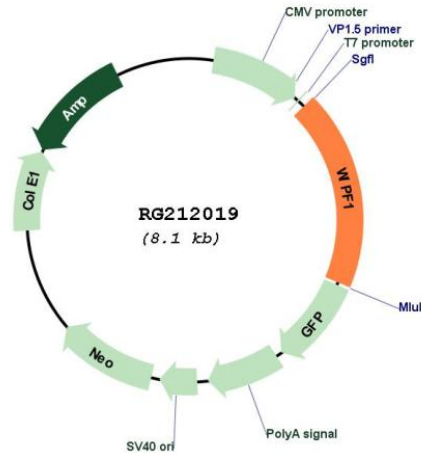
Restriction Sites:

Sgfl-MluI

Cloning Scheme:

Cloning sites used for ORF Shutting:



Plasmid Map:


ACCN:	NM_001077269
ORF Size:	1509 bp
OTI Disclaimer:	The molecular sequence of this clone aligns with the gene accession number as a point of reference only. However, individual transcript sequences of the same gene can differ through naturally occurring variations (e.g. polymorphisms), each with its own valid existence. This clone is substantially in agreement with the reference, but a complete review of all prevailing variants is recommended prior to use. More info
OTI Annotation:	This clone was engineered to express the complete ORF with an expression tag. Expression varies depending on the nature of the gene.
Components:	The ORF clone is ion-exchange column purified and shipped in a 2D barcoded Matrix tube containing 10ug of transfection-ready, dried plasmid DNA (reconstitute with 100 ul of water).

Reconstitution Method:

1. Centrifuge at 5,000xg for 5min.
2. Carefully open the tube and add 100ul of sterile water to dissolve the DNA.
3. Close the tube and incubate for 10 minutes at room temperature.
4. Briefly vortex the tube and then do a quick spin (less than 5000xg) to concentrate the liquid at the bottom.
5. Store the suspended plasmid at -20°C. The DNA is stable for at least one year from date of shipping when stored at -20°C.

RefSeq: [NM_001077269.1](#), [NP_001070737.1](#)

RefSeq Size: 4664 bp

RefSeq ORF: 1512 bp

Locus ID: 7456

UniProt ID: [O43516](#)

Cytogenetics: 2q31.1

Gene Summary: This gene encodes a protein that plays an important role in the organization of the actin cytoskeleton. The encoded protein binds to a region of Wiskott-Aldrich syndrome protein that is frequently mutated in Wiskott-Aldrich syndrome, an X-linked recessive disorder. Impairment of the interaction between these two proteins may contribute to the disease. Two transcript variants encoding the same protein have been identified for this gene. [provided by RefSeq, Jul 2008]