

## Product datasheet for **RG212017**

### **SURF5 (MED22) (NM\_133640) Human Tagged ORF Clone**

#### Product data:

**Product Type:** Expression Plasmids  
**Product Name:** SURF5 (MED22) (NM\_133640) Human Tagged ORF Clone  
**Tag:** TurboGFP  
**Symbol:** MED22  
**Synonyms:** MED24; SRB6; surf-5; SURF5  
**Mammalian Cell Selection:** Neomycin  
**Vector:** pCMV6-AC-GFP (PS100010)  
**E. coli Selection:** Ampicillin (100 ug/mL)  
**ORF Nucleotide Sequence:** >RG212017 representing NM\_133640  
Red=Cloning site Blue=ORF Green=Tags(s)

TTTTGTAATACGACTCACTATAGGGCGCCGGGAATTCGTCGACTGGATCCGGTACCGAGGAGATCTGCC  
GCC**CGATCGCC**

ATGGCCAGCAGAGAGCCCTGCCCCAGAGCAAGGAGACGCTGCTGCAGTCTACAACAAGCGGCTGAAGG  
ACGACATTAAGTCCATCATGGACAACCTCACCGAGATCATCAAGACCGCCAAGATTGAGGACGAGACGCA  
GGTGTACGGGCCACTCAGGGTGAACAGGACAATTACGAGATGCATGTGCGAGCCGCCAACATCGTCCGA  
GCCGGCGAGTCCCTGATGAAGCTGGTGTCCGACCTCAAGCAGTTCCTGATCCTCAATGACTTCCCCTCCG  
TGAAACGAGGCCATTGACCAGCGCAACCAGCAGCTGCGCACACTGCAGGAGGAGTGGACCGGAAGCTCAT  
CAGCTGCGAGACGAGATCTCCATTGACCTCTACGAGCTGGAGGAGGAGTATTACTCGTCCAGCTCAAGC  
CTTTGCGAAGCTAATGACCTGCCTCTGTGCGAAGCTTACGGGAGGCTGGACCTCGACACAGACTCTGCTG  
ATGGCCTCTCGGCCCTCTGCTGGCGTCCCGGAGCCAGTGCTGGCCCCCTACAGGTGGACGCCCTGCG  
CCACTCCCATGCTGGTGGCCCTGGCCCCACTGAGCACGCC

**ACGCGTACGCGGCCGCTCGAG** - GFP Tag - GTTTAA

**Protein Sequence:** >RG212017 representing NM\_133640  
Red=Cloning site Green=Tags(s)

MAQQRALPQSKETLLQSYNKRKDDIKSIMDNFTEIIKTAKIEDETQVSRATQGEQDNYEMHVRAANIVR  
AGESLMKLVSDLKQFLILNDFPSVNEAIDQRNQLRTLQEEDRKLITLRDEISIDLVELEEEYSSSSS  
LCEANDLPLCEAYGRLDLDTDSADGLSAPLLASPEPSAGPLQVAAPAHSHAGGPGPTEHA

**TRTRPLE** - GFP Tag - V

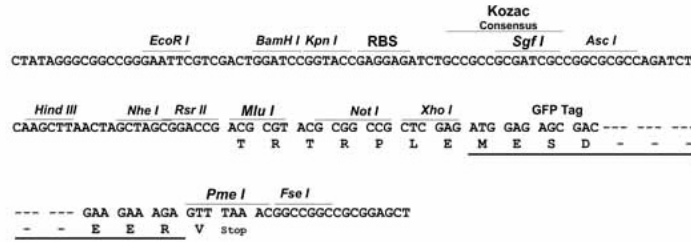
**Restriction Sites:** Sgfl-MluI



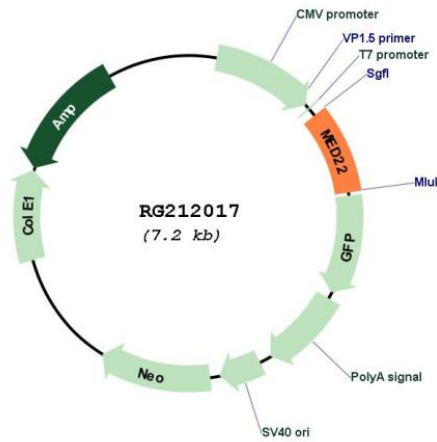
[View online »](#)

Cloning Scheme:

Cloning sites used for ORF Shutting:



Plasmid Map:



ACCN: NM\_133640  
 ORF Size: 600 bp

**OTI Disclaimer:** Due to the inherent nature of this plasmid, standard methods to replicate additional amounts of DNA in E. coli are highly likely to result in mutations and/or rearrangements. Therefore, OriGene does not guarantee the capability to replicate this plasmid DNA. Additional amounts of DNA can be purchased from OriGene with batch-specific, full-sequence verification at a reduced cost. Please contact our customer care team at [custsupport@origene.com](mailto:custsupport@origene.com) or by calling 301.340.3188 option 3 for pricing and delivery.

The molecular sequence of this clone aligns with the gene accession number as a point of reference only. However, individual transcript sequences of the same gene can differ through naturally occurring variations (e.g. polymorphisms), each with its own valid existence. This clone is substantially in agreement with the reference, but a complete review of all prevailing variants is recommended prior to use. [More info](#)

**OTI Annotation:** This clone was engineered to express the complete ORF with an expression tag. Expression varies depending on the nature of the gene.

**Components:** The ORF clone is ion-exchange column purified and shipped in a 2D barcoded Matrix tube containing 10ug of transfection-ready, dried plasmid DNA (reconstitute with 100 ul of water).

**Reconstitution Method:**

1. Centrifuge at 5,000xg for 5min.
2. Carefully open the tube and add 100ul of sterile water to dissolve the DNA.
3. Close the tube and incubate for 10 minutes at room temperature.
4. Briefly vortex the tube and then do a quick spin (less than 5000xg) to concentrate the liquid at the bottom.
5. Store the suspended plasmid at -20°C. The DNA is stable for at least one year from date of shipping when stored at -20°C.

**RefSeq:** [NM\\_133640.5](#)

**RefSeq Size:** 1448 bp

**RefSeq ORF:** 603 bp

**Locus ID:** 6837

**UniProt ID:** [Q15528](#)

**Cytogenetics:** 9q34.2

**Gene Summary:** This gene encodes a protein component of the mediator complex, which functions in the regulation of transcription by bridging interactions between gene-specific regulatory factors, RNA polymerase II, and general transcription factors. Alternatively spliced transcript variants encoding different isoforms have been observed. [provided by RefSeq, Jul 2013]