

## Product datasheet for **RG212015**

### **DISC1 (NM\_018662) Human Tagged ORF Clone**

#### **Product data:**

Product Type:	Expression Plasmids
Product Name:	DISC1 (NM_018662) Human Tagged ORF Clone
Tag:	TurboGFP
Symbol:	DISC1
Synonyms:	C1orf136; SCZD9
Mammalian Cell Selection:	Neomycin
Vector:	pCMV6-AC-GFP (PS100010)
E. coli Selection:	Ampicillin (100 ug/mL)



[View online »](#)

**ORF Nucleotide  
Sequence:**

>RG212015 representing NM\_018662  
 Red=Cloning site Blue=ORF Green=Tags(s)

TTTTGTAATACGACTCACTATAGGGCGGCCGGGAATTCGTCGACTGGATCCGGTACCGAGGAGATCTGCC  
 GCC**CGCATCGCC**

ATGCCAGGCGGGGTCTCAGGGCGCCCCAGCCGCCCGCGGCGGCGGTGAGCCACCGCGCAGGCA  
 GCCGGGATTGCTTACCACCTGCAGCGTGCCTTCGGAGGCGCGGCTGGCACGGAGGCCGGCTACATGAG  
 AAGCTCGACAGGGCCTGGGATCGGGTTCCTTCCCCAGCAGTGGGCACACTGTTCCGGTTCACAGGAGG  
 GTGTCTGGCGAGGAGTCCCACTCGGAGTCCAGGGCCAGACAGTGTGGCCTTGACTCGAGAGGCTCT  
 TGGTCCGAGCCCTGTTCCAAGAGTGCAGCAGCCCTACTGTGACCTCTGTGAGAGGAACCTCGGCGCA  
 CTTTGGGATTCAGCTCAGAGGTGGCAGCAGATTGCCTGACAGGCTTAGCTGGCCGTGTGGCCTGGGAGT  
 GCTGGGTGGCAGCAAGAGTTTGAGCCATGGATAGTTCTGAGACCCTGGACGCCAGCTGGGAGGCAGCCT  
 GCAGCGATGGAGCAAGGCGTGTCCGGGCGCAGGCTCTCTGCCATCAGCAGAGTTGAGTAGCAACAGCTG  
 CAGCCCTGGCTGTGGCCTGAGGTCCCCCAACCCCTCCTGGCTCTCACAGTGCCTTTACCTCAAGCTTT  
 AGCTTTATTTCGGCTCTCGCTTGGCTCTGCCGGGGAACGTGGAGAAGCAGAAGGCTGCCACCATCCAGAG  
 AGGCTGAGTCCCATTGCCAGAGCCCCAGGAGATGGGAGCCAAAGCTGCCAGCTTGGACGGGCTCACGA  
 GGACCCGCGATGTCTCTCTCGGCCCTTCACTCTTGGCTACACGGGTCTCTGCAGACTTGGCCAGGCC  
 GCAAGGAACAGCTCCAGGCCAGAGCGTGACATGCATTCTTACCAGACATGGACCCTGGCTCCTCCAGTT  
 CTCTGGATCCCTCACTGGCTGGCTGTGGTGGTGGTGGGAGCAGCGGCTCAGGGGATGCCACTCTTGGGA  
 CACCCTGCTCAGGAAATGGGAGCCAGTGTGCGGGACTGCCTGCTGAGAAACCGAGGCAGATGGAGGTA  
 ATATCCTTAAGATTAACCTTCAGAACTTCAGGAAGATGCAGTTGAGAAATGATGATTATGATAAAGCTG  
 AGACGTTACAACAAAGATTAGAAGACCTGGAACAAGAGAAAATCAGCCTGCACTTTCACTTCCTTCAAG  
 GCAGCCAGCTCTTAGCAGTTTCTGGGTACCTGGCAGCACAAGTCCAGGCTGCCTTGGCCGTGGGGCC  
 ACTCAGCAGGCCAGCGGAGATGACACCCACCCCCACTGAGAATGGAGCCGAGGCTGTTGGAACCCACTG  
 CTCAGGACAGCTTGACAGTGTCCATCACGAGACGAGACTGGCTTCTTCAGGAAAAGCAGCAGCTACAGAA  
 AGAAATTGAAGCTCTCAAGCAAGGATGTTTGTGCTGGAAGCCAAAGATCAACAGCTGAGAAGGGAATA  
 GAGGAGCAAGAGCAGCAACTCCAGTGGCAGGGCTGCGACCTGACCCCACTGGTGGGCCAGCTGTCCCTGG  
 GTCAGCTGCAGGAGGTGACGAAGCCTTGACAGCACCCCTGGCCTCAGCCGGTCAGATTCCTTCCATGC  
 AGAGCCACCGGAAACATAAGGAGCCTCCAGGAAAGAATAAAATCCCTCACTTGTCACTTAAAGAAATC  
 ACTACTAAGGTGTGTATGAGTGAGAAATCTGCAGCACCTGAGGAAGAAAGTTAACGATATTGAAACCC  
 AACTACCAGCCTTGCTTGAAGCCAAAATGCATGCCATATCAGGAAACCATTTCTGGACGGCTAAAGACCT  
 CACCGAGGAGATTAGATCATTAAACATCAGAGAGAGAAGGGCTGGAGGGACTCCTCAGCAAGCTGTTGGTG  
 TTGAGTTCCAGGAATGTCAAAAAGCTGGGAAGTGTAAAGAAGATTACAACAGACTGAGAAGAGAAGTGG  
 AGCACCAGGAGACTGCCTATGAAACAAGTGTGAAGGAAAATACTATGAAGTACATGGAAACACTTAAGAA  
 TAACTGTGCAGCTGCAAGTGTCCACTGCTTGGGAAAGTGTGGGAAGCTGACTTGGAAAGCTTGTGATTG  
 CTTATCCAGAGCCTACAGCTCCAGGAAGCCAGGGGAAGCCTGTCTGTAGAAGATGAGAGGCAGATGGATG  
 ACTTAGAGGGAGCTGCTCCTCTATTCCCCCAGGCTCCACTCCGAGGATAAAAGGAAGACCCCTTTGAA  
 GGTATTGGAAGAATGGAAGACTCACCTCATCCCCTCTCTGCACTGTGCTGGAGGTGAACAGAAAGAGGAA  
 TCTTACATCCTTTCTGCAGAACTTGGAGAAAAGTGTGAAGACATAGGCAAGAAGCTATTGTACTTGGAAAG  
 ATCAACTTCACACAGCAATCCACAGTCATGATGAAGATCTCATTAGTCTCTCAGGAGGGAGCTCCAGAT  
 GGTGAAGGAACTCTGCAGGCCATGATCTGCAGCTCCAGCCAGCAAGGAGGCGGGAGAAAGAGAAGCT  
 GCAGCTTCTGCATGACAGCTGGTGTCCACGAAGCACAAGCC

**ACGCGT**ACGCGGCCGCTCGAG – GFP Tag – GTTTAA

**Protein Sequence:**

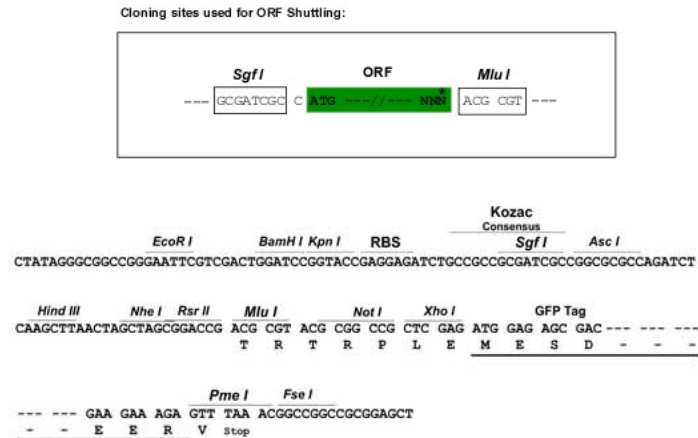
>RG212015 representing NM\_018662  
 Red=Cloning site Green=Tags(s)

MPGGGPQGAPAAAGGGGVSHRAGSRDCLPPAACFRRRLARRPGYMRSSSTGPGIGFLSPAVGTLFRFPGG  
 VSGEESHSESRARQCGLDSRGLLVRSVPVSKSAAAPTVTSVRGTSAHFGIQLRGGTRLPDRLSWPCGPGS  
 AGWQQEFAMDSSETLDASWEAACSDGARRVRAAGSLPSAELSSNSCSPGCGPEVPPTPPGSHSAFTSSF  
 SFIRLSLGSAGERGEAEGCPPSREAESHQSPQEMGAKAASLDGPHEDPRCLSRPFSLLATRVSAADLAQA  
 ARNSSRPERDMHSLPDMDPGSSSLDPSLAGCGDGS SGGDAHSWDTLLRKWEPVLRDCLLRNRQMEV  
 ISLRKLQKLQEDAVENDDYDKAETLQQRLLEDLEQEKISLHFQLPSRQPALSSFLGHAAQVQAALRRGA  
 TQQASGDDTHTPLRMEPRLLEPTAQDSLHVSITRRDWLLQEKQQLQKEIEALQARMFVLEAKDQQLRREI  
 EEQEQQQLQWQCDLTPLVGQLSLGQLQEVSKALQDTLASAGQIPFHAEPETIRSLQERIKSLNLSLKEI  
 TTKVCMSEKFCSTLRKKVNDIETQLPALLEAKMHAISGNHFWTAKDLTEEIRSLTSEREGLEGLLSKLLV  
 LSSRNVKKLGSVKEDYNRLRREVEHQETAYETSVKENTMKYMETLKNKLCCKCPLLGKVWEADLEACRL  
 LIQSLQLQEARGSLSVEDERQMDDEGAAPPIPPRLHSEDKRKTPLKVLEEWKTHLIPSLHCAGGEQKEE  
 SYILSAELGEKCEDIGKKLLYLEDQLHTAIHSHDEDLIQSLRRELQMVKETLQAMILQLQPAKEAGEREA  
 AASCMTAGVHEAQA

TRTRPLE – GFP Tag – V

**Restriction Sites:**

Sgfl-MluI

**Cloning Scheme:**


**ACCN:** NM\_018662

**ORF Size:** 2562 bp

**OTI Disclaimer:** The molecular sequence of this clone aligns with the gene accession number as a point of reference only. However, individual transcript sequences of the same gene can differ through naturally occurring variations (e.g. polymorphisms), each with its own valid existence. This clone is substantially in agreement with the reference, but a complete review of all prevailing variants is recommended prior to use. [More info](#)

**OTI Annotation:** This clone was engineered to express the complete ORF with an expression tag. Expression varies depending on the nature of the gene.

**Components:** The ORF clone is ion-exchange column purified and shipped in a 2D barcoded Matrix tube containing 10ug of transfection-ready, dried plasmid DNA (reconstitute with 100 ul of water).

**Reconstitution Method:**

1. Centrifuge at 5,000xg for 5min.
2. Carefully open the tube and add 100ul of sterile water to dissolve the DNA.
3. Close the tube and incubate for 10 minutes at room temperature.
4. Briefly vortex the tube and then do a quick spin (less than 5000xg) to concentrate the liquid at the bottom.
5. Store the suspended plasmid at -20°C. The DNA is stable for at least one year from date of shipping when stored at -20°C.

**RefSeq:** [NM\\_018662.3](#)

**RefSeq Size:** 7069 bp

**RefSeq ORF:** 2565 bp

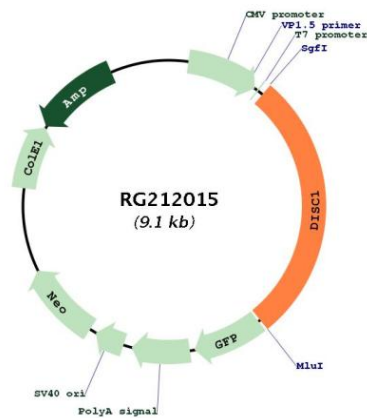
**Locus ID:** 27185

**UniProt ID:** [Q9NRI5](#)

**Cytogenetics:** 1q42.2

**Gene Summary:** This gene encodes a protein with multiple coiled coil motifs which is located in the nucleus, cytoplasm and mitochondria. The protein is involved in neurite outgrowth and cortical development through its interaction with other proteins. This gene is disrupted in a t(1;11) (q42.1;q14.3) translocation which segregates with schizophrenia and related psychiatric disorders in a large Scottish family. Alternate transcriptional splice variants, encoding different isoforms, have been characterized. [provided by RefSeq, Jul 2008]

## Product images:



Circular map for RG212015