

Product datasheet for **RG212012**

PCDH7 (NM_032456) Human Tagged ORF Clone

Product data:

Product Type:	Expression Plasmids
Product Name:	PCDH7 (NM_032456) Human Tagged ORF Clone
Tag:	TurboGFP
Symbol:	PCDH7
Synonyms:	BH-Pcdh; BHPCDH; PPP1R120
Mammalian Cell Selection:	Neomycin
Vector:	pCMV6-AC-GFP (PS100010)
E. coli Selection:	Ampicillin (100 ug/mL)
ORF Nucleotide Sequence:	>RG212012 representing NM_032456 Red=Cloning site Blue=ORF Green=Tags(s)

TTTTGTAATACGACTCACTATAGGGCGGCCGGAATTCGTCGACTGGATCCGGTACCGAGGAGATCTGCC
GCC**CGATCGCC**

ATGCTGAGGATGCGGACCGCGGGATGGGCGCGGGCTGGTGTGGGCTGCTGCCTCCTCTGCCGCTCT
CGCTCAGCCTGGCGGCCCAAGCAGCTCCTCCGGTACCGGCTGGCCGAGGAGGGCCCGCCGACGTCCG
CATCGGCAACGTGGCTTACAGCTGGGCATCGTGACCGGATCGGGTGGAGTACTTTCAGCCTGGAGTCC
GGTCCGAGTACCTGAAGATCGACAACCTCACTGGCGAGCTGAGCAGGAGCGAGCGGCATCGACCGCG
AGAAGCTGCCCCAGTGTGATGATCTTCGACGAGAACGAGTGTTCCTGGACTTCGAGGTGTCGGTGAT
CGGGCCCTCGCAGAGCTGGGTGGACCTGTTTGGAGGTCAGGTATCGTGCTTGACATCAACGACAACAGC
CCCACCTTCCCGTCGCCCCGTGCTCACGCTCACGGTGGAGGAGAATCGGCCGGTGGGCACACTTTACCTGC
TGCCACAGCCACCGACCGGACTTCGGCCGCAACGGCATCGAGCGCTACGAGCTGCTCCAGGAGCCCGG
AGGCGGCGGCGAGCGGCGGAGACCGCGCGCCGGGGCGGCGGACAGCGCCCCATCCCGGGGGCGGC
GGGAACGGCGGAGCGGCGGCGGCTCGGGAGGCTCCAAGCGGCGGCTGGACGCATCAGAGGGCGGCGGC
GCACCAACCCCGGCGGCGCAGCAGCGTGTTCGAGCTGCAGGTGGCGGACACCCCGGACGGCGAGAAGCA
GCCGACGTGATCGTGAAGGGGGCGCTGGACCGGAGCAGCGGACTCCTACGAGCTGACCTGCGAGTG
CGCGACGGCGGCGACCCGCTCGCTCCTCGCAGGCCATCCTACGGGTCTCATCCGACGTGAACGACA
ACAGCCCCGCTTCGAGAAGAGCGTGTACGAGGCGGACTTGGCTGAGAACAGCGCCCCGGGACCCCAT
CCTGCAACTGCGCGCAGCCGACTTGGACGTGGGGTCAACGGGCAGATCGAATACGTGTTGCGGGCGGCC
ACCGAGTCGGTGAGGCGGCTGCTGCGCCTTACGAGACGTCCGGCTGGCTCAGCGTCTGCACCGGATCG
ACCGGAGGAGGTGAACCAGCTGCGCTTACGGTATGGCCCGGACCGCGGCGAGCCCCCAAGACCGA
CAAGGCCACCGTGGTCTTAACATCAAAGACGAGAACGACAACGTGCCGTCCATTGAAATCCGCAAGATT
GGGCGCATCCCCCTCAAGGACGGGGTGGCAACGTGGCCGAGGACGTTCTGGTCGACACCCCATCGCTC
TGGTGCAGGTGTCGACCGAGACCAAGGCGAGAACGGGGTGGTCACTGCACCGTGGTGGCGACGTGCC
CTTCCAGCTCAAGCCAGCCAGCAGCACCAGGGCGACCGAACAAGAAAAGTACTTCTGCACACCTCG



[View online »](#)

```

ACCCCTCTGGACTATGAGGCCACCCGGGAGTTCAACGTGGTCATCGTGGCGGTGGACTCAGGCAGCCCCA
GCCTCTCGAGCAACAACCTCCCTGATTGTCAAGGTGGGAGACACCAACGACAACCCGCCATGTTCCGGCCA
GTCGGTGGTGGAGGTTTACTTCCCTGAGAACACATCCCGGGCGAGAGGGTGGCCACGGTCTGGCGACA
GACGCAGACAGCGGTAAAGACGCCGAGATCGCCTACTCGTGGACTCCTCTGTGATGGGGATCTTTGCCA
TCGATCCCGATTCTGGGGACATCCTGGTCAATACCGTGTGGACCGGAGCAGACTGACAGGTATGAGTT
TAAAGTTAACGCCAAAGACAAAGGCATCCCGTGTGCTGACAGGCAGCACTACGGTGATTGTGCAGGTGGCT
GATAAAAATGACAATGACCCTAAGTTTATGCAGGACGTCTTACCTTTTATGTGAAAGAAAATTCGAGC
CCAACAGCCCTGTGGGGATGGTACCCTGATGGATGCTGACAAGGGGCGGAATGCAGAGATGAGCCTGTA
CATAGAGGAGAACAATAACATTTTTTCTATTGAAAATGACACGGGGACATTTACTCCACAATGTCTTTT
GACCGGGAACATCAGACCACATACACTTTCAGAGTCAAGGCTGTGGATGGGGGAGATCCTCCAGATCTG
CCACAGCTACAGTCTCGCTTTTGTGATGGATGAAAATGACAATGCTCCACAGTTACCCTTCCAAAAA
CATTTCTACACTTTACTGCCACCTTCGAGTAATGTCAGGACAGTAGTAGCTACAGTGTGGCAACAGAC
AGTGATGATGGCACAATGCAGACCTGAACTACAGCATTGTGGGAGGAAATCCCTTCAAGCTGTTTGAAA
TTGATCCCACTAGTGGTGTGGTTTCTTAGTGGGAAAACACCCAAAAGCATTATGGCTTGACAGGTT
GGTGGTCAAGTGAATGACAGTGGGCGAGCCTTCCAGTCCACCAGACTCTGGTGCAGTGTGTTGCAAT
GAAAGTGTCTAATGCAACTGCGATTGACTCCCAGATAGCTAGAAGTTTGCACATCCCACTCACCCAGG
ATATAGCTGGTGACCCAAGCTATGAAATTAGCAACAGAGACTCAGTATTGTCATTGGCGTGGTGTCTGG
CATTATGACGGTGATTCTAATCATCTTAATTGTAGTGTGGCAAGGTAAGTGCAGGTCCAAAAATAAAAAT
GGCTATGAAGCCGGCAAAAAAGATCACGAAGACTTTTTTACCCCAACAGCATGACAAAATCTAAAAAGC
CTAAAAAGGACAAGAAAAACAAAAATCTAAGCAGCCTCTCTACAGCAGCATTGTCACTGTGGAGGCTTC
TAAGCCAAATGGCAGAGGTATGATAGTGTCAATGAGAAGCTGTCAGACAGCCCAAGCATGGGGCGATAC
AGGTCCGTTAATGGTGGGCCCGCAGTCTGACCTGGCAAGGCATTACAAATCTAGTTCCTTCCCAATTGCCTA
CTGTTTCAGCTTTCATCCCACTCACCAACTGCAGGAAAAAACACCAGGCCGTACAAGATCTACCACGAC
CAACACATTTGTGGGAGCAGGAGACAACATTTCAATTGGATCAGATCACTGCTCTGAGTACAGCTGTCAA
ACCAATAACAAGTACAGCAAACAGGTAAGATGTATCCCAATATATTTAATATCCCAAGGAGGGC
    
```

ACGCGTACGCGGCCGCTCGAG – GFP Tag – GTTTAA

Protein Sequence:

>RG212012 representing NM_032456

Red=Cloning site Green=Tags(s)

```

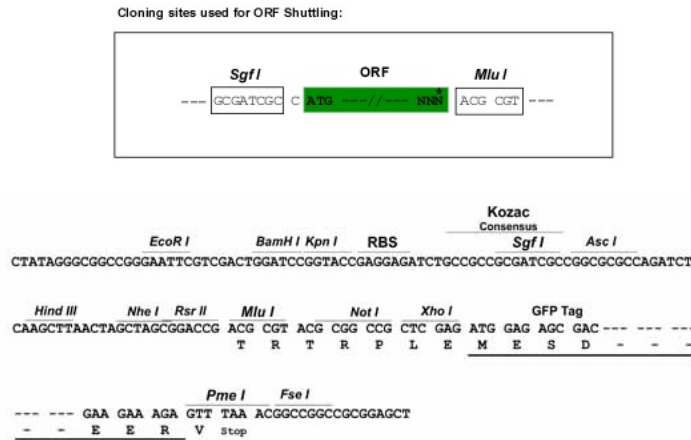
MLRMRTAGWARGWCLGCLLLLPLSLSLAAAKQLLRYRLAEEGPADVRIGNVASDLGIVTGSSEVTFSL
GSEYLIKIDNLTEGELSTERRIDREKLPQCQMIFDENECFLDFEVSIVIGPSQSWVDLFEQVIVLDINDNT
PTFPSPVLTVEENRPVGTLYLLPTATDRDFGRNGIERYELLQEPGGGGSGGESRRAGAADSAPYPGGG
GNGASGGGSGGSKRRLDASEGGGTNPGRSSVFELQVADTPDGEKQPQLIVKALDREQRDSYELTLRV
RDGGDPPRSSQAILRVLITDVNDNSPRFEKSVYEADLAENSAPGTPILQLRAADLDVGVNGQIEYVFGAA
TESVRRLLRLDETSGLSVLHRIDREEVNLRFVMDRDRGQPPKTDKATVVLNIKDENDNVPSIEIRKI
GRIPLKDGVANVAEDVLVDTPIALVQVSDRDQGENGVVCTTVVGDVFPQLKPASDTEGDQNKKKYFLHTS
TPLDYEATREFNVVIVAVDSGSPSLSSNNSLIVKVGDTNDNPPMFGQSVVEVYFPENNIPGERVATVLT
DADSGKNAEIAYSLDSSVMGIFAIDPDSGDILVNTVLDREQTDREYEFKVNADKDGIPVLQGSTTIVIVQA
DKNDNDPKFMQDVFTFYVKENLQPNSPVMVTVMADKGRNAEMSLYIEENNNIFSIENDTGTIYSTMSF
DREHQTTYTFRVKAVDGGDPPRSATATVSLFVMDENDNAPTTLVTLVTLVTLVTLVTLVTLVTLVTLV
SDDGINADLNYSIVGGNPFKLFEDPTSGVVS LVGKL TQKHYGLHRLVVQVNDSGQPSQSTTTLVHVFVN
ESVSNATAIDSQIARSLHIPLTQDIAGDPSYEISKQRLSIVIGVAGIMTVILIIILIVVMARYCRSKNKN
GYEAGKKDHEDFFTPQQHDKSKPKKDKKKNKSKQPLYSIVTVEASKPNGQRYDSVNEKLSDSPSMGRY
RSVNGGPGSPDLARHYKSSSPLPTVQLHPQSPTAGKKHQAVQDLPPANTFVGAGDNI SIGSDHCSEYSCQ
TNNKYSKQVRCIPNIFKYPRG
    
```

TRTRPLE – GFP Tag – V

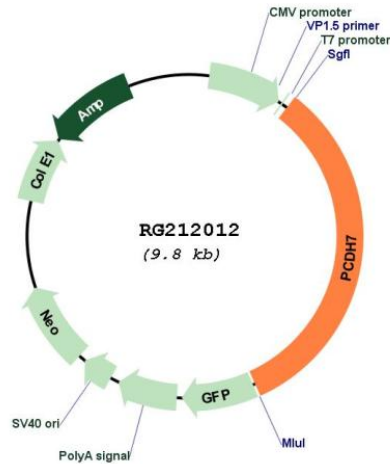
Restriction Sites:

Sgfl-MluI

Cloning Scheme:



Plasmid Map:



ACCN: NM_032456

ORF Size: 3216 bp

OTI Disclaimer: The molecular sequence of this clone aligns with the gene accession number as a point of reference only. However, individual transcript sequences of the same gene can differ through naturally occurring variations (e.g. polymorphisms), each with its own valid existence. This clone is substantially in agreement with the reference, but a complete review of all prevailing variants is recommended prior to use. [More info](#)

OTI Annotation: This clone was engineered to express the complete ORF with an expression tag. Expression varies depending on the nature of the gene.

Components:	The ORF clone is ion-exchange column purified and shipped in a 2D barcoded Matrix tube containing 10ug of transfection-ready, dried plasmid DNA (reconstitute with 100 ul of water).
Reconstitution Method:	<ol style="list-style-type: none">1. Centrifuge at 5,000xg for 5min.2. Carefully open the tube and add 100ul of sterile water to dissolve the DNA.3. Close the tube and incubate for 10 minutes at room temperature.4. Briefly vortex the tube and then do a quick spin (less than 5000xg) to concentrate the liquid at the bottom.5. Store the suspended plasmid at -20°C. The DNA is stable for at least one year from date of shipping when stored at -20°C.
RefSeq:	NM_032456.3
RefSeq Size:	4928 bp
RefSeq ORF:	3219 bp
Locus ID:	5099
UniProt ID:	O60245
Cytogenetics:	4p15.1
Domains:	CA
Protein Families:	Druggable Genome, Transmembrane
Gene Summary:	This gene belongs to the protocadherin gene family, a subfamily of the cadherin superfamily. The gene encodes a protein with an extracellular domain containing 7 cadherin repeats. The gene product is an integral membrane protein that is thought to function in cell-cell recognition and adhesion. Alternative splicing yields isoforms with unique cytoplasmic tails. [provided by RefSeq, Jul 2008]