

## Product datasheet for **RG211994**

### Nidogen 2 (NID2) (NM\_007361) Human Tagged ORF Clone

#### Product data:

Product Type:	Expression Plasmids
Product Name:	Nidogen 2 (NID2) (NM_007361) Human Tagged ORF Clone
Tag:	TurboGFP
Symbol:	NID2
Synonyms:	NID-2
Mammalian Cell Selection:	Neomycin
Vector:	pCMV6-AC-GFP (PS100010)
E. coli Selection:	Ampicillin (100 ug/mL)
ORF Nucleotide Sequence:	>RG211994 representing NM_007361 Red=Cloning site Blue=ORF Green=Tags(s)

TTTTGTAATACGACTCACTATAGGGCGGCCGGAATTCGTCGACTGGATCCGGTACCGAGGAGATCTGCC  
GCC**CGATCGCC**

ATGGAGGGGGACCGGGTGGCCGGGCGGCCGGTGTCTGTCGTTACCAGTGCTACTGCTGCTGCAGTTGC  
TAATGTTGCGGGCCGGCGCTGCACCCAGACGAGCTCTCCACACGGGGAGTCGTGGGGGACCGCT  
CCTGCAGGAAGGCGACGACGAAAGCTCAGCCGTGGTGAAGCTGGCGAATCCCCTGCATTCTACGAAGCC  
CGATTCAGCAACCTCTACGTGGGCACCAACGGCATCATCTCCACTCAGGACTTCCCAGGGAAACGCAGT  
ATGTGGACTATGATTTCCCACCGACTTCCCGCCATCGCCCTTTTCTGGCGGACATCGACACGAGCCA  
CGGCAGAGGCCGAGTCTGTACCGAGAGGACACCTCCCCCGCAGTGTGGCCTGGCCGCCGCTATGTG  
CGCGCTGGCTTCCCGCGCTCTGCGCGCTTACCCCCACCCACGCCTTCTGGCCACCTGGGAGCAGGTAG  
GCGCTTACGAGGAGGTCAAGCGCGGGGCGCTGCCTCGGGAGAGCTGAACACTTTCAGGAGTTTTGGC  
ATCTGATGGGTCTGATAGCTACGCCCTCTTTCTTATCCTGCCAACGGCCTGCAGTTCCTTGAACCCGC  
CCCAAAGAGTCTTACAATGTCCAGCTTCAGCTTCAGCTCGGGTGGGCTTCTGCCAGGGGAGGCTGATG  
ATCTGAAGTCAGAAGGACCATATTTTCAGCTTACTAGCACTGAACAGTCTGTGAAAAATCTCTATCACT  
AAGCAACCTGGGGATCCCTGGAGTGTGGGCTTTCCATATCGGCAGCACTTCCCCTGGACAATGTCAGG  
CCAGCTGCAGTTGGAGACCTTTCGCTGCCACTCTTCTGTTCCCCTGGGACGTTCCCTTACGCCATGTA  
CAGCCCTGAAAAGTGACTATAATGAGGACAATTTGGATTACTACGATGTGAATGAGGAGGAAGCTGAATA  
CCTTCCGGGTGAACCAGAGGAGGATTGAATGGCCACAGCAGCATTGATGTTTCTTCCAATCCAAAGTG  
GATACAAAGCCTTTAGAGGAATCTTCCACCTTGGATCCTCACACCAAGAAGGAACATCTCTGGGAGAGG  
TAGGGGGCCAGATTTAAAAGGCCAAGTTGAGCCCTGGGATGAGAGAGAGACCAGAAGCCAGCTCCACC  
AGAGGTAGACAGAGATTCAGTGGCTCCTTCTGGGAAACCCACCACCGTACCCGAAAACGGAAGCATC  
CAGCCCTACCCAGATGGAGGGCCAGTGCCTTCGGAAATGGATGTTCCCCAGCTCATCTGAAGAAGAAA  
TTGTTCTCGAAGTTACCCTGCTTCAGGTACACTACCCCTAAGTCGAGGGACGATGAGGTGGGACT  
GGAAGACAACATAGGTTCCAACCCGAGGTCTTACGTATAATGCTGCCAACAGGAACCTGTGAACAC



AACCACAGACAATGCTCCCGCATGCCTTCTGCACGGACTATGCCACTGGCTTCTGCTGCCACTGCCAAT  
CCAAGTTTATGGAAATGGGAAGCACTGTCTGCCTGAGGGGGCACCTCACCGAGTGAATGGGAAAGTGAG  
TGGCCACCTCCACGTGGGCCATACACCCGTGCACTTCACTGATGTGGACCTGCATGCGTATATCGTGGGC  
AATGATGGCAGAGCCTACACGGCCATCAGCCACATCCCACAGCCAGCAGCCAGGCCCTCTCCCTCA  
CACCAATTGGAGGCTGTTTGGCTGGCTCTTTGCTTTAGAAAACTGGCTCTGAGAAGGCTTCAGCCT  
CGCAGGTGCTGCCTTTACCATGACATGGAAGTTACATTCTACCCGGGAGAGGAGACGGTTCGTACT  
CAAACCTGTGAGGGACTTGACCCAGAGAACTACCTGAGCATTAAAGACCAACATTCAAGGCCAGGTGCCTT  
AGTCCCAGCAAATTTACAGCCACATCTCTCCCTACAAGGAGCTGTACCACTACTCCGACTCCACTGT  
GACCTCTACAAGTTCCAGAGACTACTCTGACTTTTGGTGAATCAACCAAACATGGTCTACCCGATC  
CACCAGAACATCACTTACCAGGTGTGCAGGCACGCCCCAGACACCCGCTCTTCCCACCACCCAGCAGC  
TGAACGTGGACCGGCTTTGCTTGTATAATGACGAAGAAAGAGTGCTTAGATTTGCTGTGACCAATCA  
AATTGGCCCGGTCAAAGAAGATTCAGACCCCACTCCGGGAATCCTTGTATGATGGGAGCCACATGTGT  
GACACAACAGCACGGTCCATCCAGGGACAGGTGTAGATTACACCTGTGAGTGCGCATCTGGGTACCAGG  
GAGATGGACGGAAGTGTGTGGATGAAAATGAATGTGCAACTGGCTTTCATCGCTGTGCCCAACTCTGT  
ATGTATCAACTTGCTGGAAGCTACAGGTGTGAGTGCCGGAGTGGTTATGAGTTTGCAGATGACCCGAT  
ACTTGCATCTTGATCACCCACCTGCCAACCCCTGTGAGGATGGCAGTCATACCTGTGCTCTGCTGGGC  
AGGCCCGGTGTGTTACCATGGAGGCAGCACGTTCACTGTGCCTGCCTGCTGTTATGCCGGCGATGG  
GCACCACTGCACTGATGTAGATGAATGCTCAGAAAACAGATGTCACCCCTGCAGCTACCTGTACAATACT  
CCTGGTTCCTTCTCTGCCGTTGTCAACCCGGATATTAAGGGATGGATTTCACTGCATACCTGACTCCA  
CCTCAAGCCTGACACCCTGTGAACAACAGCAGCGCCATGCCAGGCCAGTATGCCTACCTGGGGCCCCG  
GTTCCACATCCCCAATGCGACGAGCAGGGCAACTTCTGCCCTACAGTGTGATGGCAGCACTGGTTTC  
TGCTGGTGCCTGGACCTGATGGTCAAGTTCTGGTACCCAGACTCCACTGGCTCCACCCCGCCTC  
ACTGTGGACCATCACCAGAGCCACCCAGAGGCCCCGACCATCTGTGAGCGCTGGAGGAAAACCTGCT  
GGAGCACTACGGTGGCACCCCGGGATGACCAGTACGTGCCCCAGTGGATGACCTGGGCCAATTCATC  
CCCTGCAGTGCCACGGAAGAGCGACTTCTGCTGGTGTGGACAAAGATGGCAGAGAGGTGCAGGGCA  
CCCGCTCCAGCCAGGCACCACCCTGCGTGTATACCCACCGTCGCTCCACCCATGGTCCGGCCACGCC  
CCGGCCAGATGTGACCCCTCCATCTGTGGGCACCTTCTGCTCTATACTCAGGGCCAGCAGATTGGCTAC  
TTACCCCTCAATGGCACCAGGCTTCAGAAGGATGCAGCTAAGACCCTGCTGTCTCTGCATGGCTCCATAA  
TCGTGGGAATTGATTACGACTGCCGGGAGAGGATGGTGTACTGGACAGATGTTGCTGGACGGACAATCAG  
CCGTGCTGGTCTGGAAGTGGGAGCAGAGCCTGAGACGATCGTGAATTCAGGTCTGATAAGCCCTGAAGGA  
CTTGCCATAGACCACATCCGAGAACAATGTACTGGACGGACAGTGTCTGGATAAGATAGAGAGCGCCC  
TGCTGGATGGCTCTGAGCGCAAGTCTCTTCTACACAGATCTGGTGAATCCCCGTGCCATCGCTGTGGA  
TCCAATCCGAGGCAACTGTACTGGACAGACTGGAATAGAGAAGCTCCTAAAATTGAAACGTCATCTTTA  
GATGGAGAAAACAGAAGAATTCTGATCAATACAGACATTGGATTGCCAATGGCTTAACCTTTGACCCTT  
TCTCTAAACTGCTCTGCTGGCAGATGCAGGAACCAAAAACTGGAGTGTACACTACCTGATGGAAGTGG  
ACGGCGTGTCAATCAAACAACCTCAAGTACCCCTTCAAGCATCGTAAGCTATGCAGATCACTTCTACCAC  
ACAGACTGGAGGAGGATGGTGTGTATCAGTAAATAACATAGTGGCCAGTTTACTGATGAGTATCTCC  
CAGAACAACGATCTCACCTCTACGGGATAACTGCAGTCTACCCCTACTGCCCAACAGGAAGAAAG

ACGCGTACGCGGCCGCTCGAG – GFP Tag – GTTTAA

**Protein Sequence:** >RG211994 representing NM\_007361  
Red=Cloning site Green=Tags(s)

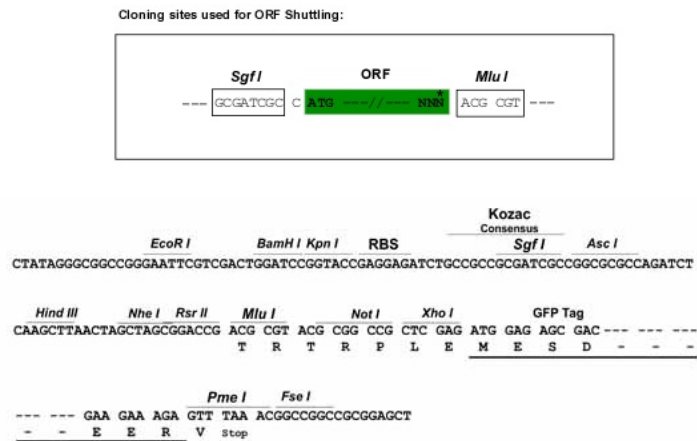
```
MEGDRVAGRPVLSLPLVLLLQLLMLRAAALHPDELFPHGESWGDQLLEGGDESSAVVKLANPLHFYEA
RFSNLVYGTNGIISTQDFPRETQYVDYDFPTDFPAIAPFLADIDTSHGRGRVLYREDTSPAVLGLAARYV
RAGFPRSARFTPTHAFLATWEQVGAYEEVKRGALPSGELNTFQAVLASDGSYSALFLYPANGLQFLGTR
PKESYNVQLQLPARVGFCRGEADDLKSEGPFYSLTSTEQSVKNLYQLSNLGIPIGVWAFHIGSTSPLDNVR
PAAVGDLSAAHSSVPLGRSF SHATALESYDNEEDLDYDYNEEEEAYLPGPEEALNGHSSIDVSFQSKV
DTKPLEESSTLDPHTKEGTSLGEVGGPDLKQVPEPWERETRSPAPPEVDRDSLAPSWETPPYPENGSI
QPYPDGGPVPSEMDVPPAHPEEEIVLRSYPASGHTTPLSRGTYEVGLEDNIGSNTTEVFTYNAANKETCEH
NHRQCSRHAFCCTDYATGFCCHCQSKFYGNKGKHLPEGAPHRVNGKVSGLHVGHTPVHFTDVLHAYIVG
NDGRAYTAISHIPQPAQAALLPLTPIGGLFGWLFALKPGSENGFSLAGAAFTHDMEVTFYPGEETVRIT
QTAEGLDPENYL SIKTNIQGVYPVPA NFTAHISPYKEL YHYSSTVTSTSSRDYSLTFGAINQTWSYRI
HQNTITYQVCRHAPRHSFPPTTQQLNVDRVFALYNDEERVLRFAVTNQIGPVKEDSDPTPGNPCYDGSHMC
DTTARCHPGTGVDYTCCEASGYQDGRNCVDENECATGFHRCGPNSVCINLPGSYRCECRSGYEFADDRH
TCILITPPANPCEDGSHTCAPAGQARC VHHGGSTFSCACLPGYAGDGHQCTDVDECESENCHPAATCYNT
PGFS SCRCQPGYYGDFQCIPDSTSSLTPCEQQQRHAQAQYAYPGARFHIQPCDEQGNFLPLQCHGSTGF
CWCVDPDGHEVPQTPTPGSTPPHCGPSPEPTQRPPTICERWRENLEHYGGTPRDDQYVPQDDLGHFI
PLQCHGKSDFCWCVDKDGREVQGTQRQPPTPACIPTVAPPMVRPTRPDVTPPSVGTFLLYTQGGQIGY
LPLNGTRLQKDAAKTLLSLHGSIIIVGIDYDCRERMVYWDVAGRTISRAGLELGAEPETIVNSGLISPEG
LAIDHIRRTMYWTDVLDKIESALLDGSERKVLFYTDLVNPRIAVDPPIRGNLYWTDWNREAPKIETSSL
DGENRRILINTDIGLPNGLTFDPFSKLLCWADAGTKKLECTLPDGTGRRVIQNNLKYPFSIVSYADHFYH
TDWRRDGVVSVNKHSGQFTDEYLPEQRSHLYGITAVVYPCPTGRK
```

TRTRPLE - GFP Tag - V

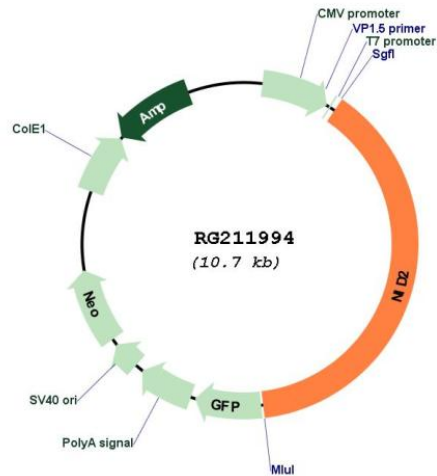
**Restriction Sites:**

SgfI-MluI

**Cloning Scheme:**



## Plasmid Map:



ACCN: NM\_007361

ORF Size: 4125 bp

**OTI Disclaimer:** The molecular sequence of this clone aligns with the gene accession number as a point of reference only. However, individual transcript sequences of the same gene can differ through naturally occurring variations (e.g. polymorphisms), each with its own valid existence. This clone is substantially in agreement with the reference, but a complete review of all prevailing variants is recommended prior to use. [More info](#)

**OTI Annotation:** This clone was engineered to express the complete ORF with an expression tag. Expression varies depending on the nature of the gene.

**Components:** The ORF clone is ion-exchange column purified and shipped in a 2D barcoded Matrix tube containing 10ug of transfection-ready, dried plasmid DNA (reconstitute with 100 ul of water).

**Reconstitution Method:**

1. Centrifuge at 5,000xg for 5min.
2. Carefully open the tube and add 100ul of sterile water to dissolve the DNA.
3. Close the tube and incubate for 10 minutes at room temperature.
4. Briefly vortex the tube and then do a quick spin (less than 5000xg) to concentrate the liquid at the bottom.
5. Store the suspended plasmid at -20°C. The DNA is stable for at least one year from date of shipping when stored at -20°C.

RefSeq: [NM\\_007361.2](#), [NP\\_031387.2](#)

RefSeq Size: 5065 bp

RefSeq ORF: 4128 bp

Locus ID: 22795

UniProt ID: [Q14112](#)

Cytogenetics: 14q22.1

<b>Domains:</b>	Idl_recept_b, thyroglobulin_1, EGF_CA, NIDO, EGF, EGF, G2F
<b>Protein Families:</b>	Druggable Genome, Secreted Protein
<b>Gene Summary:</b>	This gene encodes a member of the nidogen family of basement membrane proteins. This protein is a cell-adhesion protein that binds collagens I and IV and laminin and may be involved in maintaining the structure of the basement membrane.[provided by RefSeq, Jun 2010]