

Product datasheet for **RG211991**

PDE11A (NM_001077358) Human Tagged ORF Clone

Product data:

Product Type:	Expression Plasmids
Product Name:	PDE11A (NM_001077358) Human Tagged ORF Clone
Tag:	TurboGFP
Symbol:	PDE11A
Synonyms:	PPNAD2
Mammalian Cell Selection:	Neomycin
Vector:	pCMV6-AC-GFP (PS100010)
E. coli Selection:	Ampicillin (100 ug/mL)



[View online »](#)

ORF Nucleotide Sequence:

>RG211991 representing NM_001077358
 Red=Cloning site Blue=ORF Green=Tags(s)

TTTTGTAATACGACTCACTATAGGGCGGCCGGAATTCGTCGACTGGATCCGGTACCGAGGAGATCTGCC
 GCC**CGGATCGCC**

ATGCAGATGTATCTTCCATTTTGTGGAATCGCCATATCTAACGCTCAGCTCTTTGCTGCCTCAAGGAAAG
 AATATGAAAGAAGCAGAGCTTTGCTAGAGGTGGTTAATGACCTCTTTGAAGAACAGACTGACCTGGAGAA
 AATTGTCAAGAAAATAATGCATCGGGCCAAAACCTGCTGAAATGTGAACGCTGTTCTGTTTACTCCTA
 GAGGACATCGAATCACCAGTGGTGAATTTACCAAATCCTTTGAATTGATGTCCCAAAGTGCAGTGCTG
 ATGCTGAGAACAGTTTCAAAGAAAGCATGGAGAAATCATCACTCCGACTGGCTAATAAATAACAGCAT
 TGCTGAGCTGGTTGCTTCAACAGGCCTCCAGTGAACATCAGTGATGCCTACCAGGATCCGCGCTTTGAT
 GCAGAGGCAGACCAGATATCTGGTTTTACATAAGATCTGTTCTTTGTGTCCCTATTTGGAATAGCAACC
 ACCAAATAATTGGAGTGGCTCAAGTGTTAAACAGACTTGATGGGAAACCTTTTGTGATGCAGATCAACG
 ACTTTTTGAGGCTTTTGCATCTTTTGTGGACTTGGCATCAACAACAATTATGTATGATCAAGTGAAG
 AAGTCCTGGGCCAAGCAGTCTGTGGCTCTTGATGTGCTATCATACCATGCAACATGTTCAAAGCTGAAG
 TTGACAAGTTTAAGGCAGCCAACATCCCTCTGGTGTGAGAATTGCCATCGATGACATTCATTTTGTATGA
 CTTTTCTCTCGAGTTGATGCCATGATCACAGCTGCTCTCCGGATGTTTATGGAGCTGGGGATGGTACAG
 AAATTTAAATTTGACTATGAGACTGTGTAGGTGGCTTTTACAGTGGAGAAAACTATCGGATGGTTC
 TATACCACAACGGAGACATGCCTTCAACGTGTGTGAGCTGATGTTCCGGATGTTAACCCTGCTGGGTT
 TCAAGACATTCGACCGAGGTGGAATTTTAGCGGTGATTGTGGGATGCCTGTGTCATGACCTCGACCAC
 AGGGGAACCAACAATGCCTTCAAGCTAAGAGTGGCTCTGCCCTGGCCAACTCTATGGAACCTTGCTA
 CCTTGGAGCATCACCATTTCAACCACGCGGTGATGATCCTTCAAAGTGGGTCACAATATCTTTGCTAA
 CCTGTCTCCAAGGAATATAGTGACCTTATGCAGCTTTTGAAGCAGTCAATATTGGCAACAGACCTCAG
 CTGACTTTGAGAGGAGAACTGAATTTTGAACCTTGTGAGTAAAGGAGAATACGATTGGAACATCAAAA
 ACCATCGTGATATATTTGATCAATGTTAATGACAGCCTGTGACCTTGGAGCCGTGACCAAAACCGTGGGA
 GATCTCCAGACAGGTGGCAGAATTGTAACCAAGTGAATCTTGAACAAGGAGATCGGGAGAGATTAGAG
 CTCAAACCTCCTCAGCAATTTTGTATCGGAACCGGAAGGATGAACTGCCTCGGTTGCAACTGGAGT
 GGATTGATAGCATCTGCATGCCTTTGTATCAGGCACTGGTGAAGGTCAACGTGAACTGAAGCCGATGCT
 AGATTCAGTAGCTACAAACAGAAGTAAGTGGGAAGAGCTACACCAAAAACGACTGCTGCCCTCAACTGCC
 TCATCCTCCCCTGCCAGTGTATGGTAGCCAAGGAAGACAGGAAC

ACGCGTACGCGGCCGCTCGAG - GFP Tag - GTTTAA

Protein Sequence:

>RG211991 representing NM_001077358
 Red=Cloning site Green=Tags(s)

MQMYLPFCGIAISNAQLFAASRKEYERSRALLEVNDLFEEQTDLEKIVKIMHRAQTLLKCERCSVLLL
 EDIESPVVKFTKSFELMSPKCSADAENSFKESMEKSSYSDWLINNSIAELVASTGLPVNISDAYQDPRFD
 AEADQISGFHIRSVLCVPIWNSNHQIIGVAQVLNRLDGGKPFDDADQRLFEAFVIFCGLGINNTIMYDQVK
 KSWAKQSVLDVLSYHATCSKAEVDKFAANIPLVSELAIDDIHFDDFSLDAMDAMITAALRMFMELGMVQ
 KFKIDYETLCRWLLTVRKNYRMVLYHNWRHAFNVCQLMFAMLTAGFQDILTEVEILAVIVGCLCHDLHDH
 RGTNNAFQAKSGSALAQLYGTSALEHHHFNHAVMILQSEGHNIFANLSSKEYSDLMQLLKQSILATDLT
 LYFERRTEFFELVSKGEYDWNINKNHRDIFRSMLMTACDLGAVTKPWEISRQVAELVTSEFFEQGDRELER
 LKLTPSAIFDRNRKDELPRQLLEWIDSIEMPLYQALVKVNVKLPMLDSVATNRSKWEELHQKRLLASTA
 SSSPASVMVAKEDRN

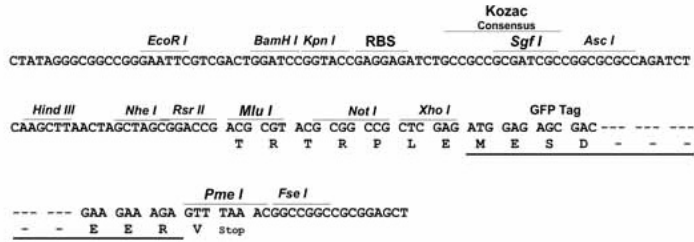
TRTRPLE - GFP Tag - V

Restriction Sites:

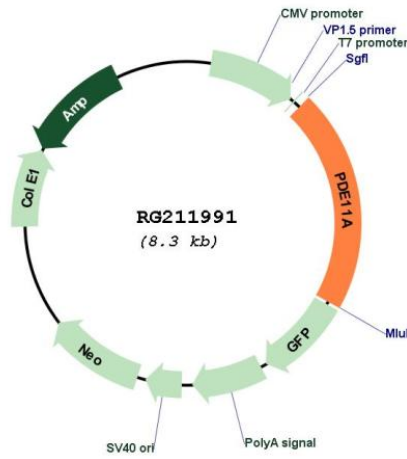
Sgfl-MluI

Cloning Scheme:

Cloning sites used for ORF Shutting:



Plasmid Map:



ACCN: NM_001077358

ORF Size: 1725 bp

OTI Disclaimer:	The molecular sequence of this clone aligns with the gene accession number as a point of reference only. However, individual transcript sequences of the same gene can differ through naturally occurring variations (e.g. polymorphisms), each with its own valid existence. This clone is substantially in agreement with the reference, but a complete review of all prevailing variants is recommended prior to use. More info
OTI Annotation:	This clone was engineered to express the complete ORF with an expression tag. Expression varies depending on the nature of the gene.
Components:	The ORF clone is ion-exchange column purified and shipped in a 2D barcoded Matrix tube containing 10ug of transfection-ready, dried plasmid DNA (reconstitute with 100 ul of water).
Reconstitution Method:	<ol style="list-style-type: none">1. Centrifuge at 5,000xg for 5min.2. Carefully open the tube and add 100ul of sterile water to dissolve the DNA.3. Close the tube and incubate for 10 minutes at room temperature.4. Briefly vortex the tube and then do a quick spin (less than 5000xg) to concentrate the liquid at the bottom.5. Store the suspended plasmid at -20°C. The DNA is stable for at least one year from date of shipping when stored at -20°C.
RefSeq:	NM_001077358.2
RefSeq Size:	1869 bp
RefSeq ORF:	1728 bp
Locus ID:	50940
UniProt ID:	Q9HCR9
Cytogenetics:	2q31.2
Protein Families:	Druggable Genome
Protein Pathways:	Progesterone-mediated oocyte maturation, Purine metabolism
Gene Summary:	The 3',5'-cyclic nucleotides cAMP and cGMP function as second messengers in a wide variety of signal transduction pathways. 3',5'-cyclic nucleotide phosphodiesterases (PDEs) catalyze the hydrolysis of cAMP and cGMP to the corresponding 5'-monophosphates and provide a mechanism to downregulate cAMP and cGMP signaling. This gene encodes a member of the PDE protein superfamily. Mutations in this gene are a cause of Cushing disease and adrenocortical hyperplasia. Multiple transcript variants encoding different isoforms have been found for this gene. [provided by RefSeq, Jul 2008]