

## Product datasheet for **RG211985**

### Plasma Kallikrein 1B (KLKB1) (NM\_000892) Human Tagged ORF Clone

#### Product data:

Product Type:	Expression Plasmids
Product Name:	Plasma Kallikrein 1B (KLKB1) (NM_000892) Human Tagged ORF Clone
Tag:	TurboGFP
Symbol:	Plasma Kallikrein 1B
Synonyms:	KLK3; PKK; PKKD; PPK
Mammalian Cell Selection:	Neomycin
Vector:	pCMV6-AC-GFP (PS100010)
E. coli Selection:	Ampicillin (100 ug/mL)



[View online »](#)

**ORF Nucleotide Sequence:**

>RG211985 representing NM\_000892  
 Red=Cloning site Blue=ORF Green=Tags(s)

TTTTGTAATACGACTCACTATAGGGCGGCCGGAATTCGTCGACTGGATCCGGTACCGAGGAGATCTGCC  
 GCCCGCATCGCC

ATGATTTTATTCAAGCAAGCAACTTATTTTCATTTCTTGTGTTGCTACAGTTTCTGTGGATGCTGACT  
 AACTCTATGAAAACGCCTTCTTCAGAGGTGGGATGTAGCTTCCATGTACACCCCAATGCCAATACTG  
 CCAGATGAGGTGCACATTCCACCAAGGTGTTGCTATTCACTTTTCTCCAGCAAGTCAATCAATGAC  
 ATGGAGAAAAGTTTGGTTGCTTCTTGAAGATAGTGTTACAGGAACCTGCCAAAAGTACATCGAACAG  
 GTGCAGTTTCTGGACATTCTTGAAGCAATGTGGTCATCAAATAAGTGCTTGCCATCGAGACATTTATAA  
 AGGAGTTGATATGAGAGGAGTCAATTTTAAATGTGTCTAAGGTTAGCAGTGTGAAGAATGCCAAAAAAGG  
 TGCACCAATAACATTCGCTGCCAGTTTTTTTCATATGCCACGCAAACATTTACAAGGCAGAGTACCGGA  
 ACAATTGCCTATTAAGTACAGTCCCGGAGGAACACCTACCGCTATAAAGGTGCTGAGTAACGTGGAATC  
 TGGATTCTCACTGAAGCCCTGTGCCCTTTCAGAAATTGGTTGCCACATGAACATCTTCCAGCATCTTGCG  
 TTCTCAGATGTGGATGTTGCCAGGGTCTCACTCCAGATGCTTTTGTGTGTCGGACCATCTGCACCTATC  
 ACCCAACTGCCTCTTCTTTACATTCTATACAAATGTATGGAAAAATCGAGTCACAAAAGAAATGTTTGCT  
 TCTTAAAACATCTGAAAGTGGCACACCAAGTTCCTCTACTCCTCAAGAAAACACCATATCTGGATATAGC  
 CTTTTAACCTGCAAAAAGAACTTTACCTGAACCTGCCATTCTAAAATTTACCCGGGAGTTGACTTTGGAG  
 GAGAAGAATTGAATGTGACTTTTGTAAAGGAGTGAATGTTTGCCAAGAGACTTGACAAAAGATGATTCCG  
 CTGTCAGTTTTTCACTTATTCTTACTCCAGAAGACTGTAAGGAAGAGAAGTGAAGTGTCTTAAAGA  
 TTATCTATGGATGTTTCTCAACTAGGATTGCGTATGGGACACAAGGGAGCTCTGGTTACTCTTTGAGAT  
 TGTGTAACACTGGGCAACTCTGTCTGCACAACAAAAACAAGCACACGCATTGTTGGAGGAACAACTC  
 TTCTTGGGGAGAGTGGCCCTGGCAGGTGAGCCTGCAGGTGAAGCTGACAGCTCAGAGGCACCTGTGTGGA  
 GGGTCACTCATAGGACACCAGTGGTCTCACTGCTGCCACTGCTTTGATGGGCTTCCCCTGCAGGATG  
 TTTGGCGCATCTATAGTGGCATTTTAAATCTGTGACAGATTACAAAAGATACACCTTTCTCACAATAAA  
 AGAGATTATTATCACCAAACTATAAAGTCTCAGAAGGGAATCATGATATCGCCTTGATAAACTCCAG  
 GCTCCTTTGAATTACACTGAATTCAAAAACCAATATGCCTACCTTCAAAGGTGACACAAGCACAATTT  
 ATACCAACTGTTGGTAACCGGATGGGGCTTCTCGAAGGAGAAAGGTGAAATCCAAAATATTCTACAAA  
 GGTAATATTCTTTGGTAACAAATGAAGAATGCCAGAAAAGATATCAAGATTATAAAATAACCCAACGG  
 ATGGTCTGTGCTGCTATAAAGAAGGGGAAAAGATGCTTGTGAAGGAGATTGAGTGGTCCCTTAGTTT  
 GCAAACACAACGGAATGTGGCGTTTGGTGGGCATCACAAGCTGGGGTGAAGGCTGTGCCCGCAGGGAGCA  
 ACCTGGTGTCTACACAAAGTCGCTGAGTACATGGACTGGATTTAGAGAAAACACAGAGCAGTGTGGA  
 AAAGCTCAGATGCAGTCACCAGCA

ACGCGTACGCGGCCGCTCGAG – GFP Tag – GTTTAA

**Protein Sequence:**

>RG211985 representing NM\_000892  
 Red=Cloning site Green=Tags(s)

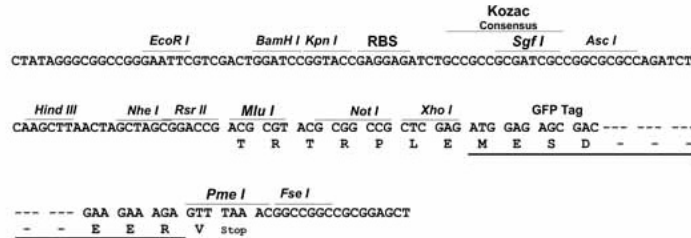
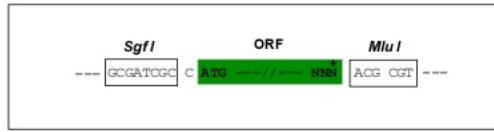
MILFKQATYFISLFATVSCGCLTQLYENAFFRGGDVASMYTPNAQYQMRCTFHPRCLLFSFLPASSIND  
 MEKRFGCFLKDSVTGTLPKVHRTGAVSGHSLKQCGHQISACHRDIYKGVDMRGVNFVSKVSSVEECQKR  
 CTNNIRCQFFSYATQTFHKAEYRNNCLLKYSPPGTPTAIKVLSNVESGFSLKPCALSEIGCHMNIFQHLA  
 FSDVDVARVLTDAFVCRITICTYHPNCLFFTFYTNVWKIESQRNVCLLKTSESGTPSSSTPQENTISGYS  
 LLTCKRTLPEPCHSKIYPGVDFGGEELNVTFVKGVNVCQETCTKMIRCQFFTYSLLPEDCKEEKCKCFRLR  
 LMSDGSPTRIAYGTQSSGYSRLCNTGDNSVCTTKTSTRIVGGTNSWGEWPWQVSLQVKLTAQRHLCG  
 GSLIGHQWVLTAAHCFDGLPLQDVWRIYSGILNLSDITKDTFQSQIKEIITHQNYKVSEGNHDIALIKLQ  
 APLNYTEFQKPICLPSKGDSTIYTNVWVTGWGFSKEKGEIQNILQKVNIPVLTNEECQKRYQDYKITQR  
 MVCAGYKEGGKACKGDSGGPLVCKHNGMWRLVGITSWGEGCARREQPGVYTKVAEYMDWILEKTQSSDG  
 KAQMQSPA

TRTRPLE – GFP Tag – V

Restriction Sites: Sgfl-MluI

Cloning Scheme:

Cloning sites used for ORF Shutting:



ACCN: NM\_000892

ORF Size: 1914 bp

OTI Disclaimer: The molecular sequence of this clone aligns with the gene accession number as a point of reference only. However, individual transcript sequences of the same gene can differ through naturally occurring variations (e.g. polymorphisms), each with its own valid existence. This clone is substantially in agreement with the reference, but a complete review of all prevailing variants is recommended prior to use. [More info](#)

OTI Annotation: This clone was engineered to express the complete ORF with an expression tag. Expression varies depending on the nature of the gene.

Components: The ORF clone is ion-exchange column purified and shipped in a 2D barcoded Matrix tube containing 10ug of transfection-ready, dried plasmid DNA (reconstitute with 100 ul of water).

Reconstitution Method:

1. Centrifuge at 5,000xg for 5min.
2. Carefully open the tube and add 100ul of sterile water to dissolve the DNA.
3. Close the tube and incubate for 10 minutes at room temperature.
4. Briefly vortex the tube and then do a quick spin (less than 5000xg) to concentrate the liquid at the bottom.
5. Store the suspended plasmid at -20°C. The DNA is stable for at least one year from date of shipping when stored at -20°C.

RefSeq: [NM\\_000892.2](#), [NP\\_000883.1](#)

RefSeq Size: 2245 bp

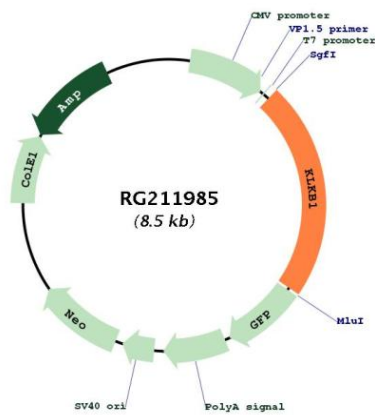
RefSeq ORF: 1917 bp

Locus ID: 3818

UniProt ID: [P03952](#)

**Cytogenetics:** 4q35.2  
**Domains:** APPLE, Tryp\_SpC, PAN  
**Protein Families:** Druggable Genome, Protease  
**Protein Pathways:** Complement and coagulation cascades  
**Gene Summary:** This gene encodes a glycoprotein that participates in the surface-dependent activation of blood coagulation, fibrinolysis, kinin generation and inflammation. The encoded preproprotein present in plasma as a non-covalent complex with high molecular weight kininogen undergoes proteolytic processing mediated by activated coagulation factor XII to generate a disulfide-linked, heterodimeric serine protease comprised of heavy and light chains. Certain mutations in this gene cause prekallikrein deficiency. Alternative splicing results in multiple transcript variants encoding different isoforms. [provided by RefSeq, Jan 2016]

**Product images:**



Circular map for RG211985