

Product datasheet for **RG211961**

ROBO1 (NM_133631) Human Tagged ORF Clone

Product data:

Product Type: Expression Plasmids
Product Name: ROBO1 (NM_133631) Human Tagged ORF Clone
Tag: TurboGFP
Symbol: ROBO1
Synonyms: DUTT1; SAX3
Mammalian Cell Selection: Neomycin
Vector: pCMV6-AC-GFP (PS100010)
E. coli Selection: Ampicillin (100 ug/mL)
ORF Nucleotide Sequence: >RG211961 representing NM_133631
Red=Cloning site Blue=ORF Green=Tags(s)

TTTTGTAATACGACTCACTATAGGGCGGCCGGAATTCGTCGACTGGATCCGGTACCGAGGAGATCTGCC
GCC**CGATCGCC**

ATGATTGCGGAGCCCGCTCACTTTTACCTGTTTGGATTAATATGTCTCTGTTTCAGGCTCCCGTCTTCGTC
AGGAAGATTTTCCACCTCGCATTGTTGAACACCCTTCAGACCTGATTGTCTCAAAGGAGAACCTGCAAC
TTTGAAGTCAAAGCTGAAGGCCGCCACACCCACTATTGAATGGTACAAAGGGGGAGAGAGAGTGGAG
ACAGACAAAGATGACCCTCGCTCACACCGAATGTTGCTGCCGAGTGGATCTTTATTTTTCTTACGTATAG
TACATGGACGGAAAAGTAGACCTGATGAAGGAGTCTATGTCTGTGTAGCAAGGAATTACCTTGGAGAGGC
TGTGAGCCACAATGCATCGCTGGAAGTAGCCATACTTCGGGATGACTTCAGACAAAACCTTCGGATGTC
ATGGTTGCAGTAGGAGAGCCTGCAGTAATGGAATGCCAACCTCCACGAGGCCATCCTGAGCCCACCATTT
CATGGAAGAAAGATGGCTCTCCACTGGATGATAAAGATGAAAGAATAACTATACGAGGAGGAAAGCTCAT
GATCACTTACACCCGTAAGAGTGACGCTGGCAAAATGTTTGTGTTGGTACCAATATGGTTGGGGAACGT
GAGAGTGAAGTAGCCGAGCTGACTGTCTTAGAGAGACCATCATTTGTGAAGAGACCCAGTAACTTGGCAG
TAACTGTGGATGACAGTGCAGAATTTAAATGTGAGGCCGAGGTGACCCTGTACCTACAGTACGATGGAG
GAAAGATGATGGAGAGCTGCCAAATCCAGATATGAAATCCGAGATGATCATACCTTGAAAATTAGGAAG
GTGACAGCTGGTACATGGGTTTACACTTGTGTTGCAGAAAATATGGTGGGCAAGCTGAAGCATCTG
CTACTGACTGTTCAAGTTGGGTCTGAACCTCCACATTTTGTGTGAAACCCCGTACCAGGTTGTTGC
TTTGGGACGACTGTAACTTTTCACTGTGAAGCAACCGAAATCCTCAACCAGCTATTTTTCTGGAGGAGA
GAAGGGAGTCAGAATCTACTTTTCTCATATCAACCACCACAGTATCCAGCCGATTTTCACTCTCCAGA
CTGGCGACCTCACAATTACTAATGTCCAGCGATCTGATGTTGGTTATTACATCTGCCAGACTTTAAATGT
TGCTGGAAGCATCATCACAAGGCATATTTGGAAGTTACAGATGTGATTGCAGATCGGCCTCCCCAGTT
ATTCGACAAGGTCCTGTGAATCAGACTGTAGCCGTGGATGGCACTTCGTCCTCAGCTGTGTGGCCACAG
GCAGTCCAGTGCCACCATTTCTGTGGAGAAAGGATGGAGTCTCGTTTCAACCAAGACTCTCGAATCAA
ACAGTTGGAGAATGGAGTACTGCAGATCCGATATGCTAAGCTGGGTGATACTGGTCCGTACACCTGCATT



GCATCAACCCCACTGGTGAAGCAACATGGAGTGCTTACATTGAAGTTCAAGAATTTGGAGTTCCAGTTC
 AGCCTCCAAGACCTACTGACCCAAATTTAATCCCTAGTGCCCATCAAAACCTGAAGTGACAGATGTCAG
 CAGAAATACAGTCACATTATCGTGGCAACCAATTTGAATTCAGGAGCAACTCCAACATCTTATATTATA
 GAAGCCTTCAGCCATGCATCTGGTAGCAGCTGGCAGACCGTAGCAGAGAAATGTGAAAACAGAAACATCTG
 CCATTAAGGACTCAAACCTAATGCAATTTACCTTTTCTGTGAGGGCAGCTAATGCATATGGAATTAG
 TGATCCAAGCCAAATATCAGATCCAGTGAACACAAGATGTCTACCAACAAGTCAGGGGTGGACCAC
 AAGCAGGTCCAGAGAGAGCTGGGAAATGCTGTTCTGCACCTCCACAACCCACCGTCTTTCTCTCTT
 CCATCGAAGTGCACTGGACAGTAGATCAACAGTCTCAGTATATACAAGGATATAAAAATTTCTATCGGCC
 ATCTGGAGCCAACCCAGGAGAATCAGACTGTTAGTTTTTGAAGTGAGGACGCCAGCCAAAAACAGTGTG
 GTAATCCCTGATCTCAGAAAGGGAGTCAACTATGAAATTAAGGCTCGCCCTTTTTTAATGAATTTCAAG
 GAGCAGATAGTGAATCAAGTTTGCCAAAACCTGGAAGAAGCACCCAGTGCCCAACCCAAAGGTGTAAC
 TGTATCCAAGAATGATGGAACGGAACTGCAATTTAGTTAGTTGGCAGCCACCTCCAGAAGACTCAA
 AATGGAATGGTCCAAGAGTATAAGGTTTGGTGTCTGGCAATGAACTCGATACCACATCAAAAAACAG
 TGGATGGTTCACCTTTCCGTGGTTCCTTTCTTGTTCCTGGAATCCGATACAGTGTGGAAGTGGC
 AGCCAGCACTGGGCTGGTCTGGGTAAGAGTGAGCCTCAGTTCATCCAGCTGGATGCCATGGAAC
 CCTGTGTACCTGAGGACCAAGTCAGCCTCGCTCAGCAGATTTAGATGTGGTGAAGCAGCCGGCCTTCA
 TAGCAGGTATTGGAGCAGCCTGTTGGATCATCCTCATGGTCTTCAGCATCTGGCTTTATCGACACCGCAA
 GAAGAGAAACGGACTTACTAGTACCTACGCGGGTATCAGAAAAGTCCCCTTTTTACCTTACACCAACA
 GTAACCTACCAGAGAGGAGGCGAAGCTGTGAGCAGTGGAGGGAGGCTGGACTTCTCAACATCAGTGAAC
 CTGCCGCGCAGCCATGGTGGCAGACAGTGGCCTAATACTGGCAACAACCACAATGACTGCTCCATCAG
 CTGCTGCACGGCAGGCAATGGAACAGCGACAGCAACCTCACTACCTACAGTCGCCAGCTGATTGTATA
 GCAAAATATAACAACCAACTGGATAACAACAACAACAACTGATGCTCCCTGAGTCAACTGTTTATGGTG
 ATGTGGACCTTAGTAACAAAATCAATGAGATGAAAACCTTCAATAGCCCAATCTGAAGGATGGCCGTTT
 TGTCAATCCATCAGGGCAGCCTACTCTTACGCCACCAGTCACTCAGCTCATCCAGTCAAACCTCAGCAACA
 ATGAACAATGGCAGCGGGGACTCTGGCAGAAAGCACTGGAACCACTGGGACAGCAGAAAACAAGAGTGG
 CACCAGTTCAGTACAACATCGTGGAGCAAAAACAAGCTGAACAAAGATTATCGAGCAATGACACAGTTC
 TCCAACATCCCATAACAACATCATACGACCAGAACACAGGAGGATCCTACAACAGCTCAGACCGGGGC
 AGTAGTACATCTGGGAGTCAAGGGCACAAGAAAGGGCAAGAACCCCAAGGTACCAAAACAGGGTGGCA
 TGAAGTGGCAGACCTGCTTCTCCTCCCCAGCACATCCTCCTCCACACAGCAATAGCGAAGAGTACAA
 CATTCTGTAGATGAAAGCTATGACCAAGAAATGCCATGTCCCGTGCCACCAGCAAGGATGATTTGCAA
 CAAGATGAATTAGAAGAGGAGGAAGATGAACGAGGCCCACTCCCCTGTTCCGGGAGCAGCTTCTTCTC
 CAGCTGCCGTGTCTATAGCCATCAGTCCACTGCCACTGACTCCCTCCCACAGGAAGAACTCCAGCC
 CATGTTACAGGATTGTCCAGAGGAGACTGGCCACATGCAGCACCAGCCGACAGGAGACGGCAGCCTGTG
 AGTCTCTCCACCACCAGGCCGATCTCCCCTCCACATACCTATGGCTACATTTAGGACCCCTGGTCT
 CAGATATGGATACGGATGCGCCAGAAGAGGAAGAAGACGAAGCCGACATGGAGGTAGCCAAGATGCAAA
 CAGAAGGCTTTTGTACGTGGGCTTGAGCAGACACCTGCCTCCAGTGTGGGGACCTGGAGAGCTGTGC
 ACGGGTCCATGATCAACGGCTGGGCTCAGCCTCAGAGGAGGACAACATTTCCAGCGGACGCTCCAGTG
 TTAGTTCTCGGACGGCTCCTTTTCACTGATGCTGACTTTGCCAGGCACTCGCAGCAGCGCAGAGTA
 TGCTGGTCTGAAAGTAGCAGCAGCGGCAATGCAGGATGCTGTGGCCGTCGACATTTTTCATGCGTCTCAG
 TGCCCTAGGCCCAAGTCCCCTGTCTACAGACAGCAACATGAGTGCCCGCTAATGCAGAAAACAGAC
 CAGCCAAGAACTGAAACACCAGCCAGGACATCTGCGCAGAGAACTACACAGATGATCTTCCACCACC
 TCCTGTGCCGCCACCTGTATAAAGTCACTACTGCCAATCCAAGACACAGCTGGAAGTACGACCTGTA
 GTGGTGCCAAAACCTCCTTCTATGGATGCAAGAACAGACAGATCATCAGACAGAAAAGGAAGCAGTTACA
 AGGGGAGAGAAGTGTGGATGGAAGACAGGTTGTTGACATGCGAACAATCCAGGTGATCCAGAGAAGC
 ACAGGAACAGCAAAATGACGGGAAAGGACGTGGAACAAGGCAGCAAAACGAGACCTTCCACCAGCAAAG
 ACTCATCTCATCAAGAGGATATTCTACCTTATTGTAGACCTACTTTTCCAACATCAAATAATCCCAGAG
 ATCCCAGTTCCTCAAGCTCAATGTCATCAAGAGGATCAGGAAGCAGACAAAGAGAACAAGCAAATGTAGG
 TCGAAGAAATATTGCAGAAATGCAGGACTTGGAGGATATGAAAGAGGAGAAGATAATAATGAAGAATTA
 GAGGAACTGAAAGC

ACGCGTACGCGGCCGCTCGAG – GFP Tag – GTTTAA

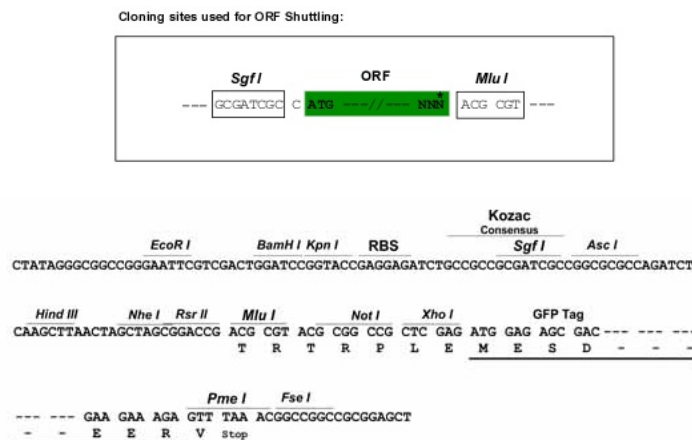
Protein Sequence: >RG211961 representing NM_133631
 Red=Cloning site Green=Tags(s)

MIAEPAHFYLFGLICLCSGSRRLRQEDFPPRIVEHPSDLIVSKGEPATLNCKAEGRPPTPTIEWYKGGERVE
 TDKDDPRSHRMLLPSGSLFFLRIVHGRKSRPDEGVYVCVARNYLGEAVSHNASLEVAILRDDFRQNPSDV
 MVAVGEPAVMECQPPRGHPEPTISWKKDGSPLDDKDERITIRGGKLMITYTRKSDAGKYVCVGTNMVGER
 ESEVAELTVLERPSFVKRPSNLAVTVDDSAEFKCEARGDPVPTVRWRKDDGELPKSRYEIRDHTLKIRK
 VTAGDMGSYTCVAENMVGKAEASATLTVQVGSEPPHFVVKPRDQVVALGRTVTFQCEATGNPQPAIFWRR
 EGSQNLFFSYQPQSSSRFSVSQTGDLTITNVQRSDVGYIICQTLNVAGSIITKAYLEVTDVIADRPVV
 IRQGPVNTVAVDGTFVLSVCVATGSPVPTILWRKDGVLVSTQDSRIKQLENGVLQIRYAKLGDTRGYTCI
 ASTPSGEATWSAYIEVQEFVGPVQPPRPTDNLIPSAPSKPEVTDVSRNTVTLVSWQPNLNSGATPTSII
 EAFSHASGSSWQVAENVKTETSIAIKGLKPNAIYFLVRAANAYGISDPSQISDPVKTQDVLPTSQGV
 KQVQRELGNVHLHNPVLSSSSIEVHWTVDQSQYIQGYKILYRPSGANHGSDWLVFEVRTPAKNSV
 VIPDLRKGVNYEIKARPFNEFQADSEIKFAKLEEAPSAPPQVTVSKNDGNGTAILVSWQPPPEDTQ
 NGMVQYKVVWCLGNETRYHINKTVDGSTFSVVIPLVPGIRYSVEVAASTGAGSGVKSEPFQIQLDAHGN
 PVPSPEDQVSLAQQISDVVKQPAFIAGIGAACWILMVFSIWLYRHRKRNGLTSTYAGIRKVPSTFTPT
 VTYQRGGEAVSSGGRPGLLNISEPAAPWLADTWPNTGNHNDCSI SCCTAGNGNSDSLTTYSRPADCI
 ANYNNQLDNKQTNLMLPESTVYGDVLDL SNKINEMKTFNSPNLKDGRFVNPSGQPTPYATTQLIQSNL
 SNNMNGSGDSEKHWKPLGQKQEVAPVQYNI VEQNLNKDYRANDTVPPTIPYNQSYDQNTGGSYNSSDRG
 SSTSGSQGHKKGARTPKVVKQGGMNWADLLPPPAHPPPHSNSEEYNI SVDESYDQEMPCVPPARMYLQ
 QDELEEEEDERGPTPPVGAASSPAAVSYSHQSTATLTPSPQEELQPMLQDCPEETGHMQHPDRRRQPV
 SPPPPRPISPPHTYGYISGPLVSDMDTDAPEEEEDMEVAKMQTRRLLLRGLEQTPASSVGDLESSV
 TGSMINGWSASEEDNIISSGRSSVSSSDGSFFTDADFAQAVAAAAYAGLKVARRQMQDAAGRHHFHASQ
 CPRPTSPVSTDSNMSAAVMQKTRPAKLLKHQPGHLRRETYDLDLPPPPVPPPAIKSPTAQSKTQLEVRPV
 VVPKLPMSDARTDRSSDRKSSYKGREVL DGRQVDMRTNPGDPREAEQQNDGKGRGNKAAKRDLP
 PPAKTHLIQEDILPYCRPTFPTSNPRDPSSSSSMSSRSGSRQREANVGRNIAEMQVLGGYERGEDNNEEL
 EETES

TRTRPLE - GFP Tag - V

Restriction Sites: SgfI-MluI

Cloning Scheme:

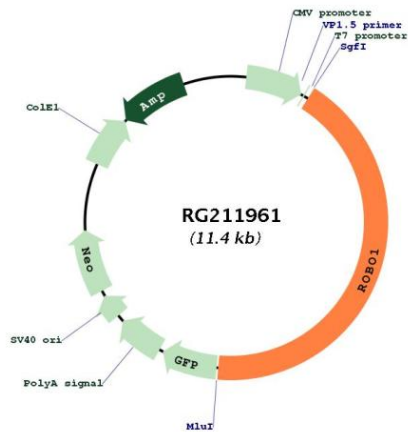


ACCN: NM_133631

ORF Size:	4845 bp
OTI Disclaimer:	<p>Due to the inherent nature of this plasmid, standard methods to replicate additional amounts of DNA in E. coli are highly likely to result in mutations and/or rearrangements. Therefore, OriGene does not guarantee the capability to replicate this plasmid DNA. Additional amounts of DNA can be purchased from OriGene with batch-specific, full-sequence verification at a reduced cost. Please contact our customer care team at custsupport@origene.com or by calling 301.340.3188 option 3 for pricing and delivery.</p> <p>The molecular sequence of this clone aligns with the gene accession number as a point of reference only. However, individual transcript sequences of the same gene can differ through naturally occurring variations (e.g. polymorphisms), each with its own valid existence. This clone is substantially in agreement with the reference, but a complete review of all prevailing variants is recommended prior to use. More info</p>
OTI Annotation:	This clone was engineered to express the complete ORF with an expression tag. Expression varies depending on the nature of the gene.
Components:	The ORF clone is ion-exchange column purified and shipped in a 2D barcoded Matrix tube containing 10ug of transfection-ready, dried plasmid DNA (reconstitute with 100 ul of water).
Reconstitution Method:	<ol style="list-style-type: none">1. Centrifuge at 5,000xg for 5min.2. Carefully open the tube and add 100ul of sterile water to dissolve the DNA.3. Close the tube and incubate for 10 minutes at room temperature.4. Briefly vortex the tube and then do a quick spin (less than 5000xg) to concentrate the liquid at the bottom.5. Store the suspended plasmid at -20°C. The DNA is stable for at least one year from date of shipping when stored at -20°C.
RefSeq:	NM_133631.2
RefSeq Size:	7475 bp
RefSeq ORF:	4821 bp
Locus ID:	6091
UniProt ID:	Q9Y6N7
Cytogenetics:	3p12.3
Domains:	ig, FN3
Protein Families:	Druggable Genome
Protein Pathways:	Axon guidance

Gene Summary:

Bilateral symmetric nervous systems have special midline structures that establish a partition between the two mirror image halves. Some axons project toward and across the midline in response to long-range chemoattractants emanating from the midline. The product of this gene is a member of the immunoglobulin gene superfamily and encodes an integral membrane protein that functions in axon guidance and neuronal precursor cell migration. This receptor is activated by SLIT-family proteins, resulting in a repulsive effect on glioma cell guidance in the developing brain. A related gene is located at an adjacent region on chromosome 3. Multiple transcript variants encoding different isoforms have been found for this gene. [provided by RefSeq, Mar 2009]

Product images:

Circular map for RG211961