

Product datasheet for **RG211943**

ABCA10 (NM_080282) Human Tagged ORF Clone

Product data:

Product Type:	Expression Plasmids
Product Name:	ABCA10 (NM_080282) Human Tagged ORF Clone
Tag:	TurboGFP
Symbol:	ABCA10
Synonyms:	EST698739
Mammalian Cell Selection:	Neomycin
Vector:	pCMV6-AC-GFP (PS100010)
E. coli Selection:	Ampicillin (100 ug/mL)
ORF Nucleotide Sequence:	>RG211943 representing NM_080282 Red=Cloning site Blue=ORF Green=Tags(s)

TTTTGTAATACGACTCACTATAGGGCGCCGGGAATTCGTCGACTGGATCCGGTACCGAGGAGATCTGCC
GCC**CGATCGCC**

ATGAATAAGATGGCCTTGGCTTCTTTATGAAAGGAAGAACAGTCATTGGGACACCAGATGAAGAGACCA
TGGATATAGAACTTCCAAAAAATACCATGAAATGGTGGGAGTTATTTAGTGATACTTCTCATATCG
CCTGAAGTTAATTGGGGATATAGAATCCCAGTTATAAAGGAGCACTCTGAATACACAGAACACTGTTGG
GCCATGCATGGTAAATTTTTGTTACTTGGCAAAGTACTGGCTAAAAGGTTTGTAGCTTTTCAAGCTG
CAATTAATGCTGCAATTATAGAAGTCACAACAAATCATTCTGTAATGGAGGAGTTGACATCAGTTATTGG
AATAAATATGAAGATACCACCTTTCATTTCTAAGGGAGAAATTATGAATGAATGGTTTCATTTACTTGC
TTAGTTTCTTTCTTCTTTTATATACTTTGCATCATTAAATGTTGCAAGGAAAAGAGGAAAATTTAAGA
AACTGATGACAGTGATGGGTCTCCGAGAGTCAGCATTCTGGCTCTCCTGGGGATTGACATACATTTGCTT
CATCTTCATTATGTCCATTTTTATGGCTCTGGTCATAACATCAATCCCAATTGTATTTTCATACTGGCTTC
ATGGTGATATTCACACTCTATAGCTTATATGGCCTTCTTTGATAGCATTGGCTTTCCTCATGAGTGTTT
TAATAAGGAAACCTATGCTCGTGGTTTGGCTGGATTTCTTCTACTGTATTTGGGGATGTCTGGGATT
CACTGTGTTATATAGACAACCTTCTTTATCTTTGGGATGGGATTAAGTCTTCTTAGCCCTTTTGCCTTC
ACTGCTGGAATGGCCCAGGTTACACACCTGGATAATTACTTAAGTGGTGTATTTTCTGATCCCTCTG
GGATTCATACAAAATGATAGCCACTTTTTTCATTTTGGCAATTTGATACTTTTTCTATTTGATATTTCAC
ATTATATTTTGAGCGAGTTTTACCTGATAAAGATGGCCATGGGGATTCTCCATTATTTTTCTTAAGTCC
TCATTTTGGTCCAAACATCAAAATACTCATCATGAAATCTTTGAGAATGAAATAAATCCTGAGCATTCTT
CTGATGATTCTTTGAACCGGTGTCTCCAGAATTCATGGAAAAGAAGCCATAAGAATCAGAAATGTTAT
AAAAGAATATAATGAAAAGACTGGAAAAGTAGAAGCATTGCAAGGCATATTTTTTACATATATGAAGGA
CAGATCACTGCAATACTTGGGCATAATGGAGCTGGTAAATCAACACTGCTAAACATTCTTAGTGGATTGT
CTGTTTCTACAGAAGGATCAGCCACTATTTATAACTCAACTCTCTGAAATAACTGACATGGAAGAAAT
TAGAAAGAATATTGGATTTGTCCACAGTTCAATTTTCAATTTGACTTCTCACTGTGAGAGAAAACCTC



[View online »](#)

AGGGTATTTGCTAAAATAAAAGGGATTCAGCCAAAGGAAGTGAACAAGAGGTAAAAAGAATTATAATGG
 AATTAGACATGCAAAGCATTCAAGACATTATTGCTAAAAAATTAAGTGGTGGCAGAAGAGAAAACCTAAC
 ACTAGGGATTGCCATCTTAGGAGATCCTCAGGTTTTGCTGCTAGATGAACCAACTGCTGGATTGGATCCC
 TTTTCAAGACACCGAGTGTGGAGCCTCCTGAAGGAGCATAAAGTAGACCGACTTATCCTCTTCAGTACCC
 AATTCATGGATGAGGCTGACATCTTGGCTGATAGGAAAGTATTTCTGTCTAATGGGAAGTTGAAATGTGC
 AGGATCATCTTTGTTTCTGAAGCGAAAGTGGGGTATTGGATATCATTTAAGTTTACACAGGAATGAAATG
 TGTGACACAGAAAAATCACATCCCTTATTAAGCAGCACATTCCCTGATGCCAAGTTAACACAGAAAGTG
 AAGAAAAACTTGTATATAGTTTGCTTTGGAAAAACGAACAAATTTCCAGATCTTTACAGTGACCTTGA
 TAAGTGTCTGACCAGGGCATAAGGAATTATGCTGTTTCAGTGACATCTCTGAATGAAGTATTCTTGAAC
 CTAGAAGGAAAAATCAGCAATTGATGAACAGATTTTGACATTGGGAAACAAGAGAAAAATACATGTGACAA
 GAAATACTGGAGATGAGTCTGAAATGGAACAGGTTCTTTGTTCTCTTCTGAAACAAGAAAGGCTGTGAG
 TAGTGCAGCTCTCTGGAGACGACAAATCTATGCAGTGGCAACACTTCGCTTCTTAAAGTTAAGGCGTGAA
 AGGAGAGCTCTTTGTGTTTGTACTAGTACTTGAATTGCTTTTATCCCATCATTCTAGAGAAGATAA
 TGTATAAAGTAACTCGTAAACTCATTGTTGGGAGTTTTACCCAGTATGATTTTCTTTCTCTGGAACA
 AATCCCGAAGACGCTCTTACCAGCCTGTTAATCGTTAATAATACAGGATCAAATATTGAAGACCTCGTG
 CATTCACTGAAGTGTGAGGATATAGTTTGGAAATAGATGACTTTAGAAACAGAAATGGCTCAGATTATC
 CCTCTACAATGGAGCCATCATAGTGTCTGGTGACCAGAAGGATTACAGATTTTCTGTTGCGTGAATAC
 CAAGAAATGAATTGTTTTCTGTTCTTATGGGAATTGTTAGCAATGCCCTTATGGGAATTTTAACTTC
 ACGGAGCTTATTCAAATGGAGAGCACTTCATTTCTCGTGATGACATAGTGTGGATCTTGGTTTTATAG
 ATGGGTCCATATTTTGTGTTGATCACAACTGCGTTTTCTCTTTTATCGGCATGAGCAGCATCAGCGA
 TTATAAAAAAATGTTCAATCCCAGTTATGGATTTGAGCCTCTGGCCTTCACTACTGGTGTGGACAG
 GCTCTGGTGGACATTCCATTACTTCTTGATTCTTTTTCAATACATTTAATTTACTACTCATATTTCT
 TGGGATCCAGCTTTTATGGGAAGTCTGTTTGTGTTTGGTGGTATGCATAATTGGTTGTGAGTTTCTCT
 TATATTCCTCACATATGTGCTTTTCATTCATCTTTTCGCAAGTGGAGAAAAATAATGGCTTTTGGTCTTT
 GGCTTTTTTATTATCTTAAATATGTGATCCACAATTATGGTATCAACTCAATATGAAAACTCAACTTAA
 TTTTGTGCATGATTTTCATACCTTCTTCACTTTGCTGGGGTATGTCATGTTATTGATCCAGCTCGACTT
 TATGAGAACTTGGACAGTCTGGACAATAGAATAAATGAAGTCAATAAAACCATCTTTTAAACCTTAA
 ATACCATACCTTCAAGTGTATTTTCTTTTGTGATAAGGTGTCTGGAATGAAGTATGGAAATGAAA
 TAATGAATAAAGACCCAGTTTTTCAAGTCTCTCCACGGAGTAGAGAACTCATCCCAATCCGGAAGAGCC
 CGAAGAAGAAGATGAAGATGTTCAAGCTGAAAGAGTCCAAGCAGCAAATGCACTCACTGCTCCAACTTG
 GAGGAGGAACCAAGTCACTAAGTCAAGCTGTTTACACAAGGAATATTATGAGACAAAGAAAAGTTGCTTTT
 CAACAAGAAAGAAGAAAATAGCCATCAGAAATGTTTCTTTTGTGTTAAAAAAGGTGAAGTTTTGGGATT
 ACTAGGACACAATGGAGCTGGTAAAAGTACTTCCATTAATGATAACTGGGTGCACAAAGCCAAGTGC
 GGAGTGGTGGTGTACAAGGCAGCAGAGCATCAGTAAGGCAACAGCATGACAACAGCCTCAAGTTCTTGG
 GGTACTGCCCTCAGGAGAACTCACTGTGGCCCAAGCTTACAATGAAAGAGCACTTGGAGTTGATGCAGC
 TGTGAAAGGACTGGGCAAGAAGATGCTGCTCTCAGTATTTACAGATTGGTGGAGCTCTTAAGTCCAG
 GAACAACCTAAGGCTCCTGTGAAAACCTATCAGAGGGAATAAAGAGAAAGCTGTGCTTTGTGCTGAGCA
 TCCTGGGGAACCCATCAGTGGTCTTCTAGATGAGCCGTTACCCGGATGGACCCGAGGGGCAGCAGCA
 AATGTGGCAGATACTTCAAGCTACCGTTAAAAACAAGGAGAGGGGCACCCTCTTGACCACCCATTACATG
 TCAGAGGCTGAGGCTGTGTGACCGTATGGCCATGATGGTGTGAGGAAAGCTAAGGTGATTGGTTCCA
 TTCAACATCTGAAAAACAAGTTTGGTAGAGATTATTTACTAGAAATAAAAAATGAAAGAACCTACCCAGT
 GGAAGCTCTCCACACAGAGATTTTGAAGCTTTTCCACAGGCTGCTTGGCAGGAAAGATATTCTCTTTA
 ATGGCGTATAAGTTACCTGTGGAGGATGTCCACCCTCTATCTCGGCCTTTTTCAAGTTAGAGGCGATGA
 AACAGACCTTCAACCTGGAGGAATACAGCCTCTCTCAGGCTACCTTGGAGCAGGATTCTTAGAACTCTG
 TAAAGAGCAGGAGCTGGGAAATGTTGATGATAAAATTGATACAACAGTTGAATGGAACTTCTCCACAG
 GAAGACCT

ACGCGTACGCGGCCGCTCGAG - GFP Tag - GTTTAA

Protein Sequence: >RG211943 representing NM_080282
 Red=Cloning site Green=Tags(s)

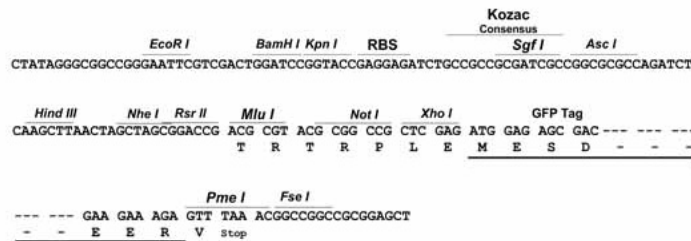
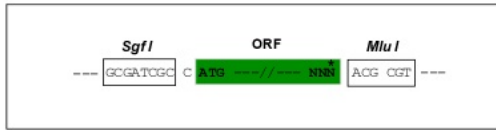
MNKMALASFMKGRVTIGTPDEETMDIELPKKYHEMVGIVFSDTFSYRLKFNWGYRIPVIKEHSEYTEHCW
 AMHGEIFCYLAKYWLKGFVAFQAAINAAIEVTTNHSVMEELTSVIGINMKIPPFISKGEIMNEWFHFTC
 LVSFSSFIYFASLNVARERGGKFKKLMVTVMGLRESAFWLSWGLTYICFIFIMSIFMALVITSPIVIFHTGF
 MVIFTLYSLYGLSLIALAFLMSVLIRKPLAGLAGFLFTVFWGCLGFTVLYRQLPLSLGWVLSLLSPFAF
 TAGMAQVTHLDNYLSGVIFPDPSGDSYKMIATFFILAFDTLFYLIFTLYFERVLPDKDGHGDSPLFFLKS
 SFWSKHQNTHEIFENEINPEHSSDDSFEPVSPEFHGKEAIRIRNVIKEYNGKTGKVEALQGIFFDIYEG
 QITAILGHNGAGKSTLLNILSGLSVSTEGSATIYNTQLSEITDMEEIRKNI GFCPQNFQDFLTVRENL
 RVFAKIKGIQPKVEVEQVKRIIMELDMQSIQDIIAKKLSGGQKRKLTGLIAILGDPQVLLDEPTAGLDP
 FSRHRVWVLSLKEHKVDRLILFSTQFMDEADILADRKFVLSNGKLCAGSSLFLKRKRWGIGYHLSLHRNEM
 CDTEKITSLIKQHIPDAKLTTSESEKLVYSLPLEKTNKFPDLYSDLKDCSDQIRNYAVSVTSLNEVFLN
 LEGKSAIDEPDFDIGKQEKIHVTRNTGDESEMEQVLCSLPETRKAVSSAALWRRQIYAVATLRFLLKRRR
 RRALLCLLLVLGIAFIPILILEKIMYKVTRETHCWEFSPSMYFLSLEQIPKPTLSLLIVNNTGSNIEDLV
 HSLKCCQDIVLEIDDFRNRNGSDDPSYNGAIIIVSGDQKDYRFVACNTKKNCFVPLMGIVSNALMGIFNF
 TELIQMESTSFSRDDIVLDLGFIDGSI FLLLITNCVSPFIMGSSI SDYKKNVQS QLWISGLWPSAYWCGQ
 ALVDIPLYFLILFSIHLIYFIFLGFQLSWELMFVLVVCII GCAVSLIFLTYVLSFIFRKRWRKNGFWSF
 GFFIILICVSTIMVSTQYEKLNILCMIFIPSFTLLGYVMLLIQLDFMRNLDLSDNRINEVNKTILLTTL
 IPYLQSVIFL FVIRCLEMKYGNEMNKDPVFRISPRSRETHPNPEEPEEDEDVQAERVQAANAL TAPNL
 EEEPVITASCLHKEYYETKKSCFSTRKKKIAIRNVSFVCKKGEVLLGHLGHNGAGKSTS IKMITGCTKPTA
 GVVVLQGSRASVRQHDNSL KFLGYCPQENSLWPKL TMKEHLEL YAAVKLGKEDAAL SISRLVEALKLQ
 EQLKAPVKTLSEGIKRKLCFVLSILGNPSVLLDEPFTGMDPEGQQMQWQILQATVKNKERGTLTTHYM
 SEAEAVCDRMAMMVSGTLRCIGSIQHLKNKFGRDYLLLEIKMKEPTQVEALHTEILKLPQAAWQERYSSL
 MAYKLPVEDVHPLSRAFFKLEAMKQTFNL EEYSLSQATLEQVFLLELCKEQELGNVDDKIDTTVEWKLLPQ
 EDP

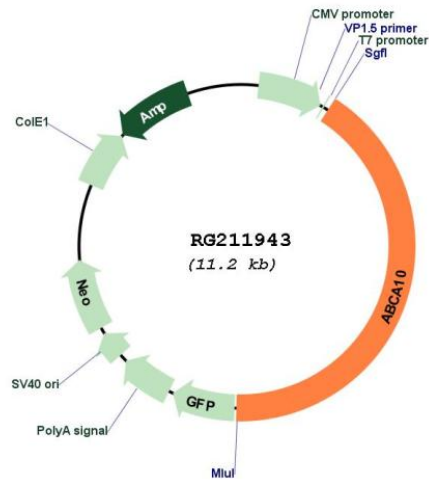
TRTRPLE - GFP Tag - V

Restriction Sites: SgfI-MluI

Cloning Scheme:

Cloning sites used for ORF Shutting:



Plasmid Map:


ACCN: NM_080282

ORF Size: 4629 bp

OTI Disclaimer: The molecular sequence of this clone aligns with the gene accession number as a point of reference only. However, individual transcript sequences of the same gene can differ through naturally occurring variations (e.g. polymorphisms), each with its own valid existence. This clone is substantially in agreement with the reference, but a complete review of all prevailing variants is recommended prior to use. [More info](#)

OTI Annotation: This clone was engineered to express the complete ORF with an expression tag. Expression varies depending on the nature of the gene.

Components: The ORF clone is ion-exchange column purified and shipped in a 2D barcoded Matrix tube containing 10ug of transfection-ready, dried plasmid DNA (reconstitute with 100 ul of water).

Reconstitution Method:

1. Centrifuge at 5,000xg for 5min.
2. Carefully open the tube and add 100ul of sterile water to dissolve the DNA.
3. Close the tube and incubate for 10 minutes at room temperature.
4. Briefly vortex the tube and then do a quick spin (less than 5000xg) to concentrate the liquid at the bottom.
5. Store the suspended plasmid at -20°C. The DNA is stable for at least one year from date of shipping when stored at -20°C.

RefSeq:	NM_080282.2 , NP_525021.2
RefSeq Size:	6348 bp
RefSeq ORF:	4632 bp
Locus ID:	10349
UniProt ID:	Q8WWZ4
Cytogenetics:	17q24.3
Protein Families:	Druggable Genome, Transmembrane
Protein Pathways:	ABC transporters
Gene Summary:	<p>The membrane-associated protein encoded by this gene is a member of the superfamily of ATP-binding cassette (ABC) transporters. ABC proteins transport various molecules across extra- and intracellular membranes. ABC genes are divided into seven distinct subfamilies (ABC1, MDR/TAP, MRP, ALD, OABP, GCN20, and White). This encoded protein is a member of the ABC1 subfamily. Members of the ABC1 subfamily comprise the only major ABC subfamily found exclusively in multicellular eukaryotes. This gene is clustered among 4 other ABC1 family members on 17q24, but neither the substrate nor the function of this gene is known. [provided by RefSeq, Jul 2008]</p>