

Product datasheet for **RG211900**

INPP4A (NM_004027) Human Tagged ORF Clone

Product data:

Product Type:	Expression Plasmids
Product Name:	INPP4A (NM_004027) Human Tagged ORF Clone
Tag:	TurboGFP
Symbol:	INPP4A
Synonyms:	INPP4; TVAS1
Mammalian Cell Selection:	Neomycin
Vector:	pCMV6-AC-GFP (PS100010)
E. coli Selection:	Ampicillin (100 ug/mL)



[View online »](#)

ORF Nucleotide Sequence:

>RG211900 representing NM_004027
 Red=Cloning site Blue=ORF Green=Tags(s)

TTTTGTAATACGACTCACTATAGGGCGGCCGGAATTCGTCGACTGGATCCGGTACCGAGGAGATCTGCC
 GCC**CGCATCGCC**

ATGACAGCAAGAGAGCACAGCCCTCGCCATGGTGCCAGGGCCCGTGAATGCAGCGGGCTTCCACCATCG
 ACGTGGCGGCCGACATGCTGGCCCTCTCTCTGGCAGGAAATATACAAGACCCAGATGAGCCATTTTAGA
 ATTTAGCTTAGCTTGCACTGAGCTGCATACTCCATCGCTAGATCGAAAGCCAAATAGTTTTGTTGCGGTG
 AGTGTCAACACCCTCTCAGGCATTCTGGACGAAGCATGCACAGACGGAGATCATTGAGGGAACCAACA
 ATCCTATATTTCTAAGCAGTATTGCCTTTTCAAGACTCTTTATCAATCAGATGACACAAGTCAAACCT
 CTCCGTGTATGATGTCAAAGATAGATCTCAGGGAACAATGATTTACTGGGCTCTGGAACGTTTATTGTC
 AAAGATCTGCTCCAGGACAGGCATCATAGGTTGCATTTAACTAAGGTCTGCAGAGAGTGACCGTGTAG
 GTAACATCACCGTATTGGCTGGCAGATGGAGGAGAAGTCAGACCAACGGCCCCCTGTACCCGGTCTGT
 GGACACTGTCAATGGGAGGATGGTTCTTCTGTGATGAGAGCTTGACGGAGGCGTTAGGAATCCGATCC
 AAATACGTTTATTGCGAAAGGACACTTTGCTGAAATCGGTGTTCCGGTGGTGCATCTGCCGCATGTACC
 GTTTTCCAACCACTGATGGTAACCAATTTGCGGATCCTGGAGCAGATGGCAGAGAGCGTGCTCCCTGCA
 CGTGCCCCGGCAGTTCTGGAAGCTCTACTAGAGGAAGATGCAGCCAGAGTGTGTGAGCTGGAGGAGCTG
 GGAGAGCTGTCCCTTGTGGGAGAGCCTCCGGCGCAAATTTGCACCCAGTACCAGACCATCATCTCA
 CATACCAGGAGAACCTGACCGACCTCCATCAGTACAGAGGGCCCTCGTTTAAAGCAAGCAGTTTAAAGC
 AGATAAAAAGTTAGAATTTGTTCCCAAACTTGACATACAAAGGATGAGAGTTCAAGACGATGGAGGA
 TCAGATCAGAACTACGACATCGTACCATTGGGGCGCCAGCAGCACACTGCCAAGGTTTTAAGTCAGGAG
 GTCTCCGCAAAAAGCTGCACAAATTTGAAGAGACCAAGAAACATTTTGGAGAGTGTGTACATCATCTGG
 CTGCCAGTCCATAATCTACATACCCAGGATGTTGTGTCAGAGCCAAGGAGATCATGCCCCAGATCAACACC
 CTGAAAACCCAAGTGAGTTACTACGCAGAGCGGCTGTCAAGGGCAGCAAGGACAGGTCTGCCACTGGCC
 TTGAGAGGACACTCGCCATCTTGGCAGACAAGACACGGCAGCTGGTACCGGTCTGCGACTGCAAGCTCCT
 GGCCAACCTCCATCCATGGGCTGAACGCTGCACGGCCTGACTACATTGCCTCCAAGGCCTCTCCACTTCC
 ACTGAGGAGGAGCAGGTGATGCTTAGAAATGACCAGGACACCCTCATGGCCCGTGGACAGGAGAAACA
 GCCGATCTTCCCTGCAGGTGGACTGGCACGAGGAGGAGTGGGAGAAAGTGTGGCTGAACGTGGACAAGAG
 CCTAGAGTGCATCATTACGCGTGTGGACAAGCTGCTGCAGAAGGAGCGGCTGCATGGCGAGGCTGTGAG
 GATGTCTTCCCTGTGCAGGCAGCTGCACCAGCAAGAAAGATTGCAGTCCCCTCTGAAGAGTCCAGCC
 CAGGTGAATGGAGTGGAGCCCTTACCCTGCTGACCCTCTCACCCAGTGCCTGGCCATGATGAGTGA
 CAAGGCCAAGAAGGCCATGGTATTCCTGCTCATGCAGGACAGCGGCCACCATAGCCACCTACCTGAGC
 CTGCACTACCGCCGTGACGTGGTCTTCTGCCAGACGCTGACCGCCCTCATCTGCGGCTTTCATTAAGC
 TGAGGAACTGCCTGCATGACGACGGCTTCTGCGCCAGCTTACACCATCGGGCTGCTGGCCAGTTCGA
 GAGCCTGCTGAGCACCTACGGGGAGGAGCTGGCAATGCTGGAGGACATGAGCCTTGGGATCATGGACTTG
 AGGAACGTGACCTTCAAAGTCACTCAGGCCACTTCCAGCGCTCCGACAGATGCTGCCCGTTCATCACAG
 GAAATCGCGACGGGTTAACGTGCGGGTCCCTCTGCCGGGCCGCTGTTTGAAGCCTTCCCGGGGAGAT
 CCAGAGTGGCATGCTGCTGCGAGTGCAGCCCTCTTCAACGTGGGCATCAATGAGCAGCAGACACTG
 GCCGAGAGGTTTGGCGATACGTCTTTACAAGAAGTCATCAACGTGGAGAGTTTGGTGGGTTAAATTCCT
 ACTTTGAGCAGTTTAAAGGAAGTTTTGCCTGAGGATTGCCTGCCTCGTCTCGCAGTCAGAGCTGCCTGCC
 AGAGCTGCTGCGGTTTCTGGGTGAGAACGTGCATGCCCGAAGAATAAGAAGCTCGACATTTCTGGCAA
 GCTGCTGAGATCTGCCGCCCTTAATGGGGTCCGGTTCACCAGCTGCAAGAGCGCTAAGGACCGTACAG
 CCATGTCGGTGACACTGGAGCAGTGCCTGATCCTGCAACACGAGCATGGCATGGCCCCGAGGTCTTAC
 CCAGGCCCTGGAGTGCATGCGCAGTGGGGTGTGCAAGAGAAAATACAATGAAGAATGTTGGAAGTCGC
 AAATATGCATTTAATTCCTGCAGCTGAAGGCTTCCCAAGCATTACAGGCCTCCGAAGGACTTACG
 GAAAAGTTGAAACG

ACGCGTACGCGGCCGCTCGAG - GFP Tag - GTTTAA

Protein Sequence: >RG211900 representing NM_004027
Red=Cloning site Green=Tags(s)

```

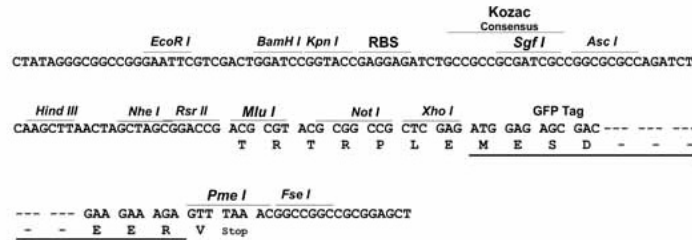
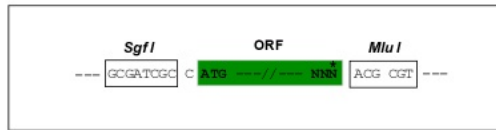
MTAREHSPRHGARARAMQRASTIDVAADMLGLSLAGNIQDPDEPILEFSLACSELHTPSLDRKPNFVAV
SVTTPPQAFWTKHAQTEIEGTNNPIFLSSIAFFQDSLINQMTQVKLSVYDVKDRSQGTMYLKSGTFIV
KDLLQDRHHLHLTLRSAESDRVGNITVIGWQMEEKSDQRPPVTRSVDTVNGRMVLPVDESLEALGIRS
KYASLRKDTLLKSVFGGAI CRM YRFP TTDGNHLRILEQMAESVLSLHVPRQFVKLLLEEDAARVCELEEL
GELSPCWESLRRQIVTQYQTIILTYQENLTDLHQYRGPSFKASSLKADKKLEFVPTNLHIQRMRVQDDGG
SDQNYDITVIGAPAAHCQGFKSGGLRKKLHKFEETKKHFEECCTSSGCQSIYIPQDVVRAKEIIAQINT
LKTQVSYAERLSRAAKDRSATGLERTLAAILADKTRQLVTVCDCKLLANSIHGLNAARPDYIASKASPTS
TEEEQVMLRNDQDTLMARWTGRNSRSSLQVDWHEEEWEK V WLNVDKSL E C I I Q R V D K L L Q K E R L H G E G C E
DVFP C A G S C T S K K D C S P P P E S S P G E W S E A L Y P L L T T L T D C V A M M S D K A K K A M V F L L M Q D S A P T I A T Y L S
L Q Y R R D V V F C Q T L T A L I C G F I I K L R N C L H D D G F L R Q L Y T I G L L A Q F E S L L S T Y G E E L A M L E D M S L G I M D L
R N V T F K V T Q A T S S A S A D M L P V I T G N R D G F N V R V P L P G L P F D A L P R E I Q S G M L L R V Q P V L F N V G I N E Q Q T L
A E R F G D T S L Q E V I N V E S L V R L N S Y F E Q F K E V L P E D C L P R S R S Q T C L P E L L R F L G Q N V H A R K N K N V D I L W Q
A A E I C R R L N G V R F T S C K S A K D R T A M S V T L E Q C L I L Q H E H G M A P Q V F T Q A L E C M R S E G C R R E N T M K N V G S R
K Y A F N S L Q L K A F P K H Y R P P E G T Y G K V E T
    
```

TRTRPLE - GFP Tag - V

Restriction Sites: SgfI-MluI

Cloning Scheme:

Cloning sites used for ORF Shuttling:

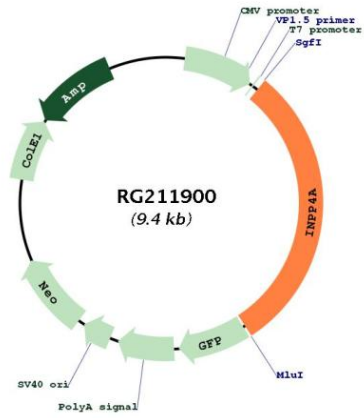


ACCN: NM_004027

ORF Size: 2814 bp

OTI Disclaimer:	The molecular sequence of this clone aligns with the gene accession number as a point of reference only. However, individual transcript sequences of the same gene can differ through naturally occurring variations (e.g. polymorphisms), each with its own valid existence. This clone is substantially in agreement with the reference, but a complete review of all prevailing variants is recommended prior to use. More info
OTI Annotation:	This clone was engineered to express the complete ORF with an expression tag. Expression varies depending on the nature of the gene.
Components:	The ORF clone is ion-exchange column purified and shipped in a 2D barcoded Matrix tube containing 10ug of transfection-ready, dried plasmid DNA (reconstitute with 100 ul of water).
Reconstitution Method:	<ol style="list-style-type: none">1. Centrifuge at 5,000xg for 5min.2. Carefully open the tube and add 100ul of sterile water to dissolve the DNA.3. Close the tube and incubate for 10 minutes at room temperature.4. Briefly vortex the tube and then do a quick spin (less than 5000xg) to concentrate the liquid at the bottom.5. Store the suspended plasmid at -20°C. The DNA is stable for at least one year from date of shipping when stored at -20°C.
RefSeq:	NM_004027.3
RefSeq Size:	3217 bp
RefSeq ORF:	2817 bp
Locus ID:	3631
UniProt ID:	Q96PE3
Cytogenetics:	2q11.2
Protein Families:	Transmembrane
Protein Pathways:	Inositol phosphate metabolism, Metabolic pathways, Phosphatidylinositol signaling system
Gene Summary:	This gene encodes an Mg ⁺⁺ independent enzyme that hydrolyzes the 4-position phosphate from the inositol ring of phosphatidylinositol 3,4-bisphosphate, inositol 1,3,4-trisphosphate, and inositol 3,4-bisphosphate. Multiple transcript variants encoding distinct isoforms have been described. [provided by RefSeq, Aug 2008]

Product images:



Circular map for RG211900