

## Product datasheet for **RG211886**

### Rho GTPase activating protein 24 (ARHGAP24) (NM\_001042669) Human Tagged ORF Clone

#### Product data:

Product Type:	Expression Plasmids
Product Name:	Rho GTPase activating protein 24 (ARHGAP24) (NM_001042669) Human Tagged ORF Clone
Tag:	TurboGFP
Symbol:	ARHGAP24
Synonyms:	FILGAP; p73; p73RhoGAP; RC-GAP72; RCGAP72
Mammalian Cell Selection:	Neomycin
Vector:	pCMV6-AC-GFP (PS100010)
E. coli Selection:	Ampicillin (100 ug/mL)



[View online »](#)

**ORF Nucleotide Sequence:**

>RG211886 representing NM\_001042669  
 Red=Cloning site Blue=ORF Green=Tags(s)

TTTTGTAATACGACTCACTATAGGGCGGCCGGAATTCGTCGACTGGATCCGGTACCGAGGAGATCTGCC  
 GCCCGCATCGCC

ATGACAGCAAATCATGAAAGCTACCTCCTCATGGCAAGCACCCAGAATGATATGGAAGACTGGTGAAGT  
 CAATCCGCCGAGTCATATGGGGACCTTTTCGGAGGAGGCATTTTTGGACAGAACTGGAGGATACTGTTCG  
 TTATGAGAAGAGATATGGGAACCGTCTGGCTCCGATGTTGGTGGAGCAGTGCCTGGACTTTATCCGACAA  
 AGGGGGCTGAAAGAAGAGGGTCTCTTCGACTGCCAGGCCAGGCTAATCTTGTTAAGGAGCTCCAAGATG  
 CCTTTGACTGTGGGGAGAAGCCATCATTGACAGCAACACAGATGTACACACGGTGGCATCACTTCTTAA  
 GCTGTACCTCCGAGAACTCCAGAACCAGTTATTCCTTATGCGAAGTATGAAGATTTTTGTGTCATGTGCC  
 AAAGTCTCAGCAAGGAAGGAAGCAGGTGTTAAGGAATTAGCAAAGCAGGTGAAGAGTTTCCAGTGG  
 TAAATTACAACCTCCTCAAGTATATTTGCAGATCTTGGATGAAGTACAGTCTACTCGGGAGTTAACAA  
 AATGAGTGTGCAGAACTGGCAACGGTCTTTGGTCTAATATCCTGCGCCCAAAGTGAAGATCCCTTTG  
 ACTATCATGGAGGCACTGTGGTGGTCCAGCAGTTGATGTCAGTATGATTAGCAAACATGATTGCCTCT  
 TTCCCAAAGATGCAGAACTACAAAGCAAGCCCAAGATGGAGTGAGCAACAACAATGAAATTCAGAAGAA  
 AGCCACCATGGGGCAGTTACAGAACAAGGAGAACAATAACACCAAGGACAGCCCTAGTAGGCAGTGTCC  
 TGGGACAAGTCTGAGTCAACCCAGAGAAGCAGCATGAACAATGGATCCCCACAGCTCTATCAGGCAGCA  
 AAACCAACAGCCCAAAGAACAGTGTTCACAAGCTAGATGTGTCTAGAAGCCCCCTCTCATGGTCAAAAA  
 GAACCCAGCCTTAATAAGGGTAGTGGGATAGTTACCAATGGGTCCTTCAGCAGCAGTAAATGCAGAAGGT  
 CTTGAGAAAACCCAAACACCCCAATGGGAGCCTACAGGCCAGAAGGAGCTCTTCACTGAAGGTATCTG  
 GTACCAAAATGGGCACGACAGTGTACAGAATGGAACGGTGCATGGCATTGTAACAGCCGACACACT  
 CGGGAACCCACAAATGTTGAAACATGAGCTGGCTGCCAAATGGCTATGTGACCCCTGAGGGATAACAAG  
 CAGAAAAGAACAAGCTGGAGAGTTAGGCCAGCACACAGACTGTCCACCTATGATAATGTCCATCAACAGT  
 TCTCCATGATGAACCTTGTGACAAGCAGAGCATTGACAGTGTACCTGGTCCACTTCTCTGTGAAAT  
 CTCCCTCCCTGAGAACTCCAACCTCTGTGCTCTTCTACCACCCTGCCAGAGCAAGACTTTTTTGGG  
 GGGAACTTTGAGGACCCTGTTTTGGATGGGCCCCCGCAGGACGACCTTCCACCCAGGGACTATGAAA  
 GCAAAAGTGACCACAGGAGTGTGGGAGGTGCAAGTAGTCGTGCCACCAGTACAGTGACAACAGTGAAGC  
 ATTTGTGGGCAACAGCAGCAGCAACCACAGTGCCTGCACAGTTAGTTTCCAGCCTGAAACAGGAAATG  
 ACCAAACAGAAGATAGAGTATGAGTCCAGGATAAAGAGCTTAGAACAGCGAAACTTGACTTTGGAACAG  
 AAATGATGAGCCTCCATGATGAACTGGATCAGGAGAGGAAAAAGTTACCAATGATAGAAATAAAAATGCG  
 AAATGCCGAGCGAGCAAAAGAAGATGCCGAGAAAAGAAATGACATGCTACAGAAAAGAAATGGAGCAGTT  
 TTTTCCACGTTTGGAGAAGTACAGTGGAAACCCAGGAGAACCCAGAGAGGAAACACAATATGGATTACG

ACGCGTACGCGGCCGCTCGAG - GFP Tag - GTTTAA

**Protein Sequence:**

>RG211886 representing NM\_001042669  
 Red=Cloning site Green=Tags(s)

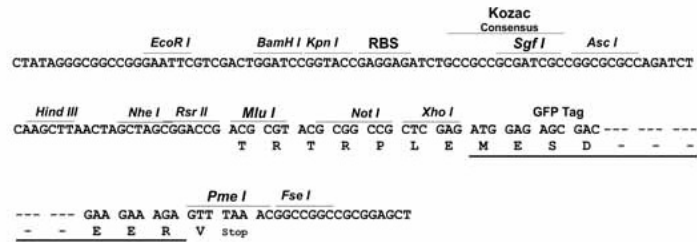
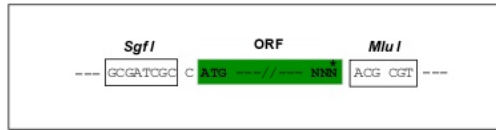
MTANHESYLLMASTQNDMEDWVKSIRRWIWPFGGGIFGQKLEDTVRYEKRYGNRLAPMLVEQCVDFIRQ  
 RGLKEEGLFRLPGQANLVKELQDAFDCGEKPSFDSNTDVHTVASLLKLYLRELPEPVIPIYAKYEDFLSCA  
 KLLSKEEEAGVKELAKQVKSPLVVNYNLLKYICRFLDEVQSYSGVNKMSVQNLATVFGPNILRPKVEDPL  
 TIMEGTVVVQQLMSVMIKHDCLFPKDAELQSKPQDGVSNNEIQKKATMGQLQNKENNTKDSPSRQCS  
 WDKSESPQRSSMNGSPTALSGSKTNSPKNSVHKLDVSRSPPLMVKKNPAFNKGSIVTNGSFSSSNAEG  
 LEKTQTPNGSLQARRSSSLKVSQTKMGTHSVQNGTVRMGILNSDTLGNPTNVRNMSWL PNGYVTLRDNK  
 QKEQAGELGQHNRLSTYDNVHQFQFSMMNLDDKQSIDSATWSTSSCEISLPENSNSCRSSTTTCPEDFFG  
 GNFDLPVLDGPPQDDLSPRDYESSKSDHRSVGGRRSRATSSSDNSETFVGNSSSNHLSLHSLVSSLKQEM  
 TKQKIEYESRIKSLEQRNL TLETEMMSLHDELQERKKFTMIEIKMRNAERAKEDA EAKRNDMLQKEME QF  
 FSTFGELTVEPRRTERGNTIWIQ

TRTRPLE - GFP Tag - V

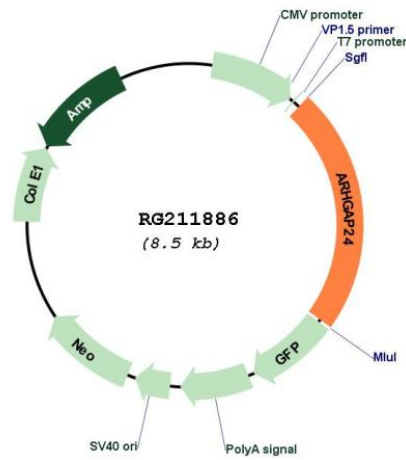
Restriction Sites: SgfI-MluI

Cloning Scheme:

Cloning sites used for ORF Shutting:



Plasmid Map:



ACCN: NM\_001042669

ORF Size: 1959 bp

<b>OTI Disclaimer:</b>	The molecular sequence of this clone aligns with the gene accession number as a point of reference only. However, individual transcript sequences of the same gene can differ through naturally occurring variations (e.g. polymorphisms), each with its own valid existence. This clone is substantially in agreement with the reference, but a complete review of all prevailing variants is recommended prior to use. <a href="#">More info</a>
<b>OTI Annotation:</b>	This clone was engineered to express the complete ORF with an expression tag. Expression varies depending on the nature of the gene.
<b>Components:</b>	The ORF clone is ion-exchange column purified and shipped in a 2D barcoded Matrix tube containing 10ug of transfection-ready, dried plasmid DNA (reconstitute with 100 ul of water).
<b>Reconstitution Method:</b>	<ol style="list-style-type: none"> <li>1. Centrifuge at 5,000xg for 5min.</li> <li>2. Carefully open the tube and add 100ul of sterile water to dissolve the DNA.</li> <li>3. Close the tube and incubate for 10 minutes at room temperature.</li> <li>4. Briefly vortex the tube and then do a quick spin (less than 5000xg) to concentrate the liquid at the bottom.</li> <li>5. Store the suspended plasmid at -20°C. The DNA is stable for at least one year from date of shipping when stored at -20°C.</li> </ol>
<b>RefSeq:</b>	<a href="#">NM_001042669.2</a>
<b>RefSeq Size:</b>	4195 bp
<b>RefSeq ORF:</b>	1962 bp
<b>Locus ID:</b>	83478
<b>UniProt ID:</b>	<a href="#">Q8N264</a>
<b>Cytogenetics:</b>	4q21.23-q21.3
<b>Gene Summary:</b>	This gene encodes a Rho-GTPase activating protein, which is specific for the small GTPase family member Rac. Binding of the encoded protein by filamin A targets it to sites of membrane protrusion, where it antagonizes Rac. This results in suppression of lamellae formation and promotion of retraction to regulate cell polarity. Alternative splicing results in multiple transcript variants. [provided by RefSeq, Sep 2016]