

Product datasheet for **RG211869**

PATZ1 (NM_014323) Human Tagged ORF Clone

Product data:

Product Type:	Expression Plasmids
Product Name:	PATZ1 (NM_014323) Human Tagged ORF Clone
Tag:	TurboGFP
Symbol:	PATZ1
Synonyms:	dj400N23; MAZR; PATZ; RIAZ; ZBTB19; ZNF278; ZSG
Mammalian Cell Selection:	Neomycin
Vector:	pCMV6-AC-GFP (PS100010)
E. coli Selection:	Ampicillin (100 ug/mL)



[View online »](#)

ORF Nucleotide Sequence:

>RG211869 representing NM_014323
 Red=Cloning site Blue=ORF Green=Tags(s)

TTTTGTAATACGACTCACTATAGGGCGGCCGGGAATTCGTCGACTGGATCCGGTACCGAGGAGATCTGCC
 GCC**CGGATCGCC**

ATGGAGCGGGTGAACGACGCTTCGTGCGGCCCGTCTGGCTGCTACACATACCAGGTGAGCAGACACAGCA
 CGGAGATGCTGCACAACCTGAACCAGCAGCGCAAAAACGCGGGCGCTTCGCGACGTGCTTTGCGGGT
 AGGCGACGAGAGCTTCCAGCGCACCGCGCCGTGCTGGCCGCTGCAGCGAGTACTTTGAGTCGGTGTT
 AGCGCCAGTTGGGCGACGGCGGAGCTGCGGACGGGGTCCGGCTGATGTAGGGGCGCGACGGCAGCAC
 CAGGGCGGGGGCGGGGCGAGCCGGGAGCTGGAGATGCACACTATCAGCTCCAAGGATTTGGGGACAT
 TCTGGACTTCGCCTACACTTCCCGCATCGTGGTGCCTTGGAGAGCTTCCCGAACTCATGACGGCCGCC
 AAGTTCCTGCTGATGAGGTGGTTATCGAGATCTGCCAGGAAGTCATCAAACAGTCCAACGTACAGATCC
 TGGTACCCCTGCCCGCGCGATATAATGCTCTTTCGCCCCCTGGGACCTCGGACTTGGCTTCCCTTT
 GGACATGACCAACGGGGCAGCCTTGGCAGCCAACAGCAATGGCATCGCCGCGAGCATGCAGCCAGAGGAG
 GAGGCAGCTCGGGCGGCTGGTGCAGCCATTGCAGGCCAAGCCTCTTTGCCTGTGTACCTGGGGTGGACC
 GCTTGCCCATGGTGGCTGGACCCATATCCCCCAACTGCTGACTTCCCCATTCCCCAGTGTGGCATCCAG
 TGCCCCCTCCCCTGACTGGCAAGCGAGGCCGGGGCGCCCAAGGAAGGCCAACCTGCTGGACTCAATGTTT
 GGGTCCCCAGGGGCGCTGAGGGAGGCAGGCATCCTTCCATGCGGTCTATGTGTAAGGTGTTCACTGATG
 CCAACCGGCTCCGGCAGCAGGAGGCCAGCAGGTGTCAACAGCTCCAGCTGGGCTACATCGACCTTCC
 TCCTCCGAGGCTGGGTGAGAATGGGCTACCCATCTCTGAAGACCCCGACGGCCCCGAAAGAGGAGCCGG
 ACCAGGAAGCAGGTGGCTTGTGAGATCTGCGGCAAGATCTCCGTGATGTGTATCATCTTAACCGGCACA
 AGCTGTCCCACTCTGGGAGAAGCCCTACTCCTGCCCTGTGTGGGTTGCGGTTCAAGAGAAAAGACCG
 CATGTCTTACCATGTGCGGTCCCATGATGGGTCCGTGGCAAGCCTTACATCTGCCAGAGCTGTGGGAAA
 GGCTTCTCCAGGCTGATCACTTGAACGGACATATCAAGCAGGTGCACACTTCTGAGCGGCTCACAAAGT
 GTCAGACCTGCAATGCTTCTTTGCCACCCGAGACCGTCTGCGCTCCACCTGGCCTGTCATGAAGACAA
 GGTGCCCTGCCAGGTGTGGGAAGTACTTGGGGCAGCATAACATGGCAGACCACCTGAAGAAGCACAGC
 GAGGGGCCAGCAACTTCTGCAGTATCTGTAACCGAGGTTTCTCCTCTGCCTCCTACTTAAAGGTCCATG
 TAAAACCCACCACGGTGTCCCTTCCCAGGTCTCCAGGCACCAGGAGCCCATCTGAATGGGGGAGC
 AGCCTTCCACTGCGCCAGGACCTATGGCAACAAGAAGGCCAGAAATGCTCACATCAGGATCCGATTGAG
 AGCTCTGACTCCTATGGTGACCTCTCAGATGCCAGCGACCTGAAGACGCCAGAGAAGCAGAGTGCCAATG
 GCTCTTTCTCCTGCGACATGGCAGTCCCCAAAAACAAAATGGAGTCTGATGGGGAGAAGAAGTACCCATG
 CCCTGAATGTGGGAGCTTCTCCGCTCTAAGTCTACTTGAACAAACACATCCAGAAGGTGCATGTCCGG
 GCTCTCGGGGGCCCCCTGGGGGACCTGGGCCCTGCCCTTGGCTCACCTTTCTCCTCAGCAGAACATGT
 CTCTCCTCGAGTCTTTGGGTTTCAGATTGTTTCAGTCGGCATTTCGTCATCTTTAGTAGATCCTGAGGT
 TGACCAGCAGCCCATGGGGCCTGAAGGGAAA

ACGCGTACGCGGCCGCTCGAG - GFP Tag - GTTTAA

Protein Sequence: >RG211869 representing NM_014323
Red=Cloning site Green=Tags(s)

```
MERVNDASCGPSGCYTYQVSRHSTEMLHNLNQRKNGGRFCVLLRVGDESFP AHRVLAACSEYFESVF
SAQLGDGGAADGGPADVGGATAAPGGGAGGSRELEMHTISSKVF GDILDFAYTSRIVRLESFPELMTAA
KFLLMRSVIEICQEVIKQSNVQILVPPARADIMLFRPPGTS DLGFPLDMTNGAALAANSNGIAGSMQPEE
EAARAAGAAIAGQASLPVLPVLDRLPMVAGPLSPQLLTS PFPSVASSAPPLTGKRGRGRPRKANLLDSMF
GSPGGLREAGILPCGLCGKVF TDANRLRQHEAQHGVTSLQLGYIDLPP PRLGENGLPISEDPGPRKRSR
TRKQVACEICGKIFRDVYHLNRHKLSHSGEKPYSCPVCGLRFKRKDRMSYHVRSHDGSVGPYICQSCGK
GFSRPDHLNGHIKQVHTSERPHKCQTCNASFATRDLRSHLACHEDKVP CQVCGKYLRAAYMADHLKKHS
EGPSNFCICNRGFSSASYLKVHVKTHHGVP LQVSRHQEPILNGGA AFHCARTYGNKEGQKCSHQDPIE
SSDSYGLSDASDLKTPEKQSANGSFSCDMAVPKNKMSDGEKKYPCPEC GSFRRKSYLNKHIQKVHVR
ALGGPLGDLGPALGSPFSPQQNMSLLESFGFQIVQSAFASSLVDPEVDQ QPMGPEGK
```

TRTRPLE - GFP Tag - V

Restriction Sites: SgfI-MluI

Cloning Scheme:



ACCN: NM_014323

ORF Size: 2061 bp

OTI Disclaimer: The molecular sequence of this clone aligns with the gene accession number as a point of reference only. However, individual transcript sequences of the same gene can differ through naturally occurring variations (e.g. polymorphisms), each with its own valid existence. This clone is substantially in agreement with the reference, but a complete review of all prevailing variants is recommended prior to use. [More info](#)

OTI Annotation: This clone was engineered to express the complete ORF with an expression tag. Expression varies depending on the nature of the gene.

Components: The ORF clone is ion-exchange column purified and shipped in a 2D barcoded Matrix tube containing 10ug of transfection-ready, dried plasmid DNA (reconstitute with 100 ul of water).

Reconstitution Method:

1. Centrifuge at 5,000xg for 5min.
2. Carefully open the tube and add 100ul of sterile water to dissolve the DNA.
3. Close the tube and incubate for 10 minutes at room temperature.
4. Briefly vortex the tube and then do a quick spin (less than 5000xg) to concentrate the liquid at the bottom.
5. Store the suspended plasmid at -20°C. The DNA is stable for at least one year from date of shipping when stored at -20°C.

RefSeq: [NM_014323.3](#)

RefSeq Size: 3812 bp

RefSeq ORF: 2064 bp

Locus ID: 23598

UniProt ID: [Q9HBE1](#)

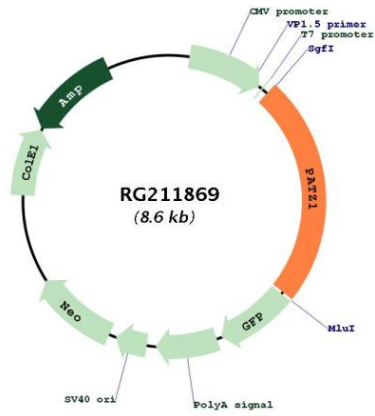
Cytogenetics: 22q12.2

Domains: BTB, AT_hook, zf-C2H2

Protein Families: Transcription Factors

Gene Summary: The protein encoded by this gene contains an A-T hook DNA binding motif which usually binds to other DNA binding structures to play an important role in chromatin modeling and transcription regulation. Its Poz domain is thought to function as a site for protein-protein interaction and is required for transcriptional repression, and the zinc-fingers comprise the DNA binding domain. Since the encoded protein has typical features of a transcription factor, it is postulated to be a repressor of gene expression. In small round cell sarcoma, this gene is fused to EWS by a small inversion of 22q, then the hybrid is thought to be translocated (t(1;22)(p36.1;q12). The rearrangement of chromosome 22 involves intron 8 of EWS and exon 1 of this gene creating a chimeric sequence containing the transactivation domain of EWS fused to zinc finger domain of this protein. This is a distinct example of an intra-chromosomal rearrangement of chromosome 22. Four alternatively spliced transcript variants are described for this gene. [provided by RefSeq, Jul 2008]

Product images:



Circular map for RG211869