

Product datasheet for **RG211866**

Glucuronic Acid Epimerase (GLCE) (NM_015554) Human Tagged ORF Clone

Product data:

Product Type:	Expression Plasmids
Product Name:	Glucuronic Acid Epimerase (GLCE) (NM_015554) Human Tagged ORF Clone
Tag:	TurboGFP
Symbol:	GLCE
Synonyms:	HSEPI
Mammalian Cell Selection:	Neomycin
Vector:	pCMV6-AC-GFP (PS100010)
E. coli Selection:	Ampicillin (100 ug/mL)



[View online »](#)

ORF Nucleotide Sequence:

>RG211866 representing NM_015554
 Red=Cloning site Blue=ORF Green=Tags(s)

TTTTGTAATACGACTCACTATAGGGCGGCCGGAATTCGTCGACTGGATCCGGTACCGAGGAGATCTGCC
 GCC**GCGATCGCC**

ATGCGTTGCTTGGCAGCTCGGGTCAACTATAAGACTTTGATTATTATCTGCGCACTTCTCACTTTGGTCA
 CAGTACTTTTGTGGAATAAGTGTCCAGTGACAAAGCAATCCAGTTTCCACGGCGTTTCGAGTAGTGGCTT
 CAGAGTGGATGGTTTGAAGAAAGAGCAGCAGCATCTGAGAGTAACAACATATGAACCAGTGGCCAAA
 CAACAGTCTGAGGAAGCATTCCCTCAGGAACAGCAGAAAGCACCCCTGTGTTGGGGGCTTCAATAGCA
 ATGTGGGAAGTAAGTGTAGGGCTCAAATATGAAGAAATTGACTGTCTCATAAATGATGAACACACAAT
 TAAAGGGAGACGAGAGGGGAACGAAGTCTTTCTCCATCACTTGGGTTGAGAAAATTTTGTATTTTAT
 GGAAGGTGGTTCAGTATGATGGCTATGATCGGTTTGAATTCTCTCATAGCTATTCAAAGTCTATGCAC
 AGAGAGCCCCCTATCACCCGATGGTGTGTTTATGTCTTTGAAGGCTACAATGTGGAAGTCCGAGACAG
 AGTCAAGTGCATAAGTGGGTTGAAGGTGTGCCATTATCTACACAATGGGGACCTCAAGGCTATTTCTAT
 CCAATCCAGATTGCACAGTATGGATTAAGTCATTACAGCAAGAATCTAACTGAGAAACCTCTCACATAG
 AGGTATATGAAACAGCAGAAGACAGAGCAAAAAACAAGCCTAATGACTGGACTGTGCCAAAGGGTCTT
 TATGGCGAATGTGGCTGATAAGTCTAGATTACCAATGTCAAACAGTTTATTGCACCAGAAAACAGTGAA
 GGTGTATCCTTGAACACTGGGAAACACAAAAGATTTTATTATTTCACTTGGACCTCAAGTCTTGACAAATG
 GAAGTGTGTCCGTGGTCTAGAGACCACAGAAAAGAAATCAGCTTCTCACTATACATTATGTCTCAAATGC
 TCAGCTAATTGCTTTTAAAGAAAGAGATATATACTATGGCATTGGGCCAGAACTTTCATGGAGCACAGTT
 ACCAGGGACCTGGTCACTGACCTCAGGAAAGGAGTGGGCTTTTCAAACACAAAAGCTGTCAAGCCAAACA
 AAATAATGCCCAAGAAGGTGGTTAGGTTGATTGCAAAAGGTAAGGGATTCTCTGACAACATTACCATCTC
 TACCACAGCCCACATGGCTGCATTTTTTGTCTAGTATTGGCTAGTAAGGAACCCAGGATGAGAAAGGT
 GGCTGGCCAATTATGGTGACCCGTAAGTTAGGGGAAGGGTTCAAGTCTTTAGAGCCAGGATGGTATTCTG
 CCATGGCCCAAGGGCAAGCCATTCTACATTAGTCAGGGCCTATCTGTTAACAAGACCATATATTCTT
 CAATTCAGCTTTAAGGGCAACAGCCCCTTATAAGTTTCTATCTGAGCAGCATGGAGTTAAAGCTGTGTTT
 ATGAATAAACATGACTGGTATGAAGAATATCCAACCACACCTAGCTCTTTTGTTTTAAATGGCTTTATGT
 ATTCTTTAATTGGGCTGTATGACTTAAAAGAACTGCAGGGGAAAACTCGGAAAAGAAGCAAGTCTT
 GTATGAGCGTGGCATGGAATCTCTTAAAGCCATGCTGCCCTTGTATGACTGGCTCAGGAACCATCTAT
 GACCTCCGTCACCTCATGCTTGGCATCGCTCCTAACCTGGCTCGTGGGACTATCATACCACCCACATCA
 ATCAGTTGCAGCTACTCAGTACCATTGATGAGTCCCAGTCTTCAAAGAATTTGTCAAGAGTGGAAAAG
 CTACCTTAAAGGCAGCAGGGCAAAGCACAAAC

ACGCGTACGCGGCCGCTCGAG – GFP Tag – GTTTAA

Protein Sequence:

>RG211866 representing NM_015554
 Red=Cloning site Green=Tags(s)

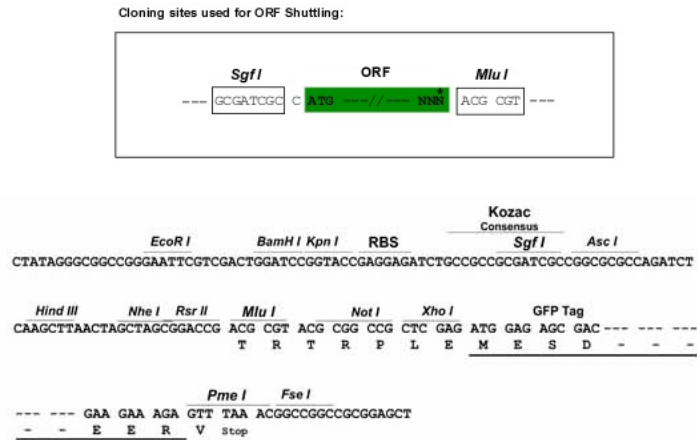
MRCLAARVNYKTLIIICALFTLVTVLLWNKCSSDKAIQFRRSSSGFRVDGFEEKRAAASESNMNHVAK
 QQSEEFQEQKAPPVVGGFNSNVGSKVLGLKYEEIDCLINDEHTIKGRREGNEVFLPFTWVEKYFDVY
 GKVVQYDGYDRFEFSHSYSKVYAQRAPYHPDGVFMSFEGYNVEVRDRVKCISGVEGVPLSTQWGPQGYFY
 PIQIAQYGLSHYSKNL TEKPPHIEVYETAEDRDKNKPNWDVTPKGCFFMANVADKSRFTNVKQFIAPETSE
 GVSLLQLGNTKDFIISFDLKF LTNGSVSVVLETTTEKNQLFTIHYVSNAQLIAFKERDIYYIGPRTSWSTV
 TRDLVTDLRKGVGLSNTKAVKPTKIMPKKVVRLLIAKGGKFLDNITISTTAHMAAFFAASDWLVRNQDEKG
 GWPIMVTRKLGEGFKSLEPGWYSAMAQQQAISTLVRAYLLTKDHIFLNSALRATAPYKFLSEQHGKAVF
 MNKHDWYEEYPTTSSFLNNGFMYSLIGLYDLKETAGEKLGKEARSLYERGMESLKAMPLYDTSGSTIY
 DLRFHMLGIAPNLRWDYHTTHINQLQLLSTIDESPVFKEFVKRWKSYLKGSRKHN

TRTRPLE – GFP Tag – V

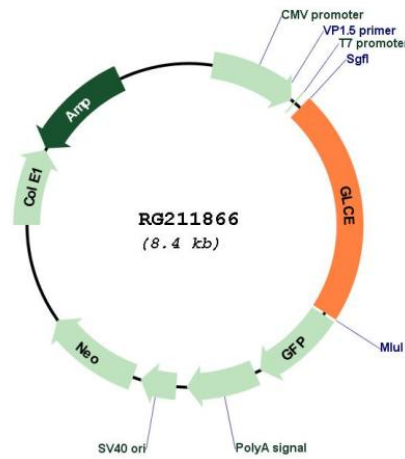
Restriction Sites:

Sgfl-MluI

Cloning Scheme:



Plasmid Map:



ACCN: NM_015554
 ORF Size: 1851 bp

OTI Disclaimer:	The molecular sequence of this clone aligns with the gene accession number as a point of reference only. However, individual transcript sequences of the same gene can differ through naturally occurring variations (e.g. polymorphisms), each with its own valid existence. This clone is substantially in agreement with the reference, but a complete review of all prevailing variants is recommended prior to use. More info
OTI Annotation:	This clone was engineered to express the complete ORF with an expression tag. Expression varies depending on the nature of the gene.
Components:	The ORF clone is ion-exchange column purified and shipped in a 2D barcoded Matrix tube containing 10ug of transfection-ready, dried plasmid DNA (reconstitute with 100 ul of water).
Reconstitution Method:	<ol style="list-style-type: none"> 1. Centrifuge at 5,000xg for 5min. 2. Carefully open the tube and add 100ul of sterile water to dissolve the DNA. 3. Close the tube and incubate for 10 minutes at room temperature. 4. Briefly vortex the tube and then do a quick spin (less than 5000xg) to concentrate the liquid at the bottom. 5. Store the suspended plasmid at -20°C. The DNA is stable for at least one year from date of shipping when stored at -20°C.
RefSeq:	NM_015554.3
RefSeq Size:	5043 bp
RefSeq ORF:	1854 bp
Locus ID:	26035
UniProt ID:	O94923
Cytogenetics:	15q23
Protein Families:	Transmembrane
Protein Pathways:	Heparan sulfate biosynthesis, Metabolic pathways
Gene Summary:	Converts D-glucuronic acid residues adjacent to N-sulfate sugar residues to L-iduronic acid residues, both in maturing heparan sulfate (HS) and heparin chains. This is important for further modifications that determine the specificity of interactions between these glycosaminoglycans and proteins.[UniProtKB/Swiss-Prot Function]