

## Product datasheet for **RG211824**

### GRK7 (NM\_139209) Human Tagged ORF Clone

#### Product data:

Product Type:	Expression Plasmids
Product Name:	GRK7 (NM_139209) Human Tagged ORF Clone
Tag:	TurboGFP
Symbol:	GRK7
Synonyms:	GPRK7
Mammalian Cell Selection:	Neomycin
Vector:	pCMV6-AC-GFP (PS100010)
E. coli Selection:	Ampicillin (100 ug/mL)



[View online »](#)

**ORF Nucleotide Sequence:**

>RG211824 representing NM\_139209  
 Red=Cloning site Blue=ORF Green=Tags(s)

TTTTGTAATACGACTCACTATAGGGCGGCCGGGAATTCGTCGACTGGATCCGGTACCGAGGAGATCTGCC  
 GCC**CGGATCGCC**

ATGGTGGACATGGGGCCCTGGACAACCTGATCGCCAACACCCGCTACCTGCAGGCCCGGAAGCCCTCGG  
 ACTGCGCAGCAAAGAGCTGCAGCGCGCGCGCTAGCCTGGCCCTGCCCGGCTGCAGGGCTGCGCGGA  
 GCTCCGCCAGAAGCTGTCCCTGAACTTCCACAGCCTGTGTGAGCAGCAGCCCATCGGTCGCCCTCTTC  
 CGTGACTTCTAGCCACAGTGCCACGTTCCGCAAGGCGGCAACCTTCTAGAGGACGTGCAGAAGTGGG  
 AGCTGGCCGAGGAGGCCACCAAGACAGCGCGCTGCAGGGGCTGGTGGCCACTTGTGCGAGTCCCC  
 TGCCCCGGGAACCCGCAACCTTCTCAGCCAGGCGTGGCCACCAAGTCCAAGCAGCCACCCTGAG  
 GAAGAGCGAGTGGCTGCAGTGACGCTGGCAAGGCTGAGGCCATGGCTTCTTGAAGAGCAGCCCTTTA  
 AGGATTCGTGACCAGCGCTTCTACGACAAGTTCTGCAGTGGAACTTCTGAGATGCAACCAGTGTC  
 AGACAAGTACTTCACTGAGTTCAGAGTGTGGGAAAGTGGTTTGGGGAGGTATGTGCCGTCCAGGTG  
 AAAAAGCTGGGAAGATGTATGCCTGTAAGAACTGGACAAGAAGCGGCTGAAGAAGAAAGTGGCGAGA  
 AGATGGCTCTCTTGGAAAAGGAAATCTTGGAGAAGGTCAGCAGCCCTTTCATTGTCTCTTGGCCTATGC  
 CTTTGAGAGCAAGACCCATCTCTGCCTTGTGATGAGCCTGATGAATGGGGGAGACCTCAAGTTCCACATC  
 TACAACGTGGGCACGCGTGGCCTGGACATGAGCCGGGTGATCTTTACTCGGCCAGATAGCCTGTGGGA  
 TGCTGCACCTCCATGAACTCGGCATCGTCTATCGGGACATGAAGCCTGAGAATGTCTTGGATGACCT  
 CGGCAACTGCAGGTTATCTGACCTGGGGCTGGCGTGGAGATGAAGGGTGGCAAGCCCATACCCAGAGG  
 GCTGGAACCAATGGTTACATGGCTCTGAGATCCTAATGGAAAAGTAAGTTATTCCTATCTCTGGGATA  
 GGTGTCAGTAAAGAGGATCTGAAGCAAAGAACTCTGCAAGACGAGGTCAAATTCAGCATGATAACTCACA  
 GAGGAAGCAAAAGATATTTGAGGCTCTTCTTGGCTAAGAAACCAGAGCAACGCTTAGGAAGCAGAGAAA  
 AGTCTGATGATCCAGGAAACATCATTTCTTAAACGATCAACTTCTCGCCTGGAAGCTGGCCTAAT  
 TGAACCCCATTTGTGCCAGACCCTTCAAGTGGTTATGCCAAAGACATCGCTGAAATTGATGATTTCTCT  
 GAGGTTCCGGGGGTGGAATTTGATGACAAAGATAAGCAGTTCTTCAAAAACCTTTCGACAGGTGCTGTT  
 CTATAGCATGGCAGGAAGAAATTATAGAAACGGGACTGTTTGAGGAACTGAATGACCCCAACAGACCTAC  
 GGGTTGTGAGGAGGTAATTCATCAAGTCTGGCGTGTGTTGTTATTG

AG**CGGACCG**ACGCGTACGCGGCCGCTCGAG - GFP Tag - GTTTAA

**Protein Sequence:**

>RG211824 representing NM\_139209  
 Red=Cloning site Green=Tags(s)

MVDMGALDNLIANAYLQARKPSDCDSKELQRRRRSLALPGLQGCAELRQKLSLNFHSLCEQQPIGRRLF  
 RDFLATVPTFRKAATFLEDVQNWELAEEGPTKDSALQGLVATCASAPAGNPQPFLLSQAVATKCCQAATTE  
 EERVAAVTLAKAEAMAFLEQEPFKDFVTSAFYDKFLQWKLQFEMQPVSDKYFTEFRVLGKGGFGEVCAVQV  
 KNTGKMYACKKLDKRLKKGGEKMALEKEILEKVSSPFIVSLAYAFESKTHLCLVMSLMNGGDLKFHI  
 YNVGTRGLDMSRVIFYSAQIACGMLHLHELGIYVYRDMKPEENVLLDDLGNCRSLDLGLAVEMKGGKPIQQR  
 AGTNGYMAPEILMEKVSYSYPVDWVAMGCSIYEMVAGRTPFKDYKEKVSKEKDLKQRTLQDEVKQFQHDNFT  
 EEAKDICRLFLAKKPEQRLGSREKSDDPKHHFFKTIINFPRLAAGLIEPPFVDPSPVYAKDIAEIDDFS  
 EVRGVEFDDKDKQFFKNFATGAVPIAWQEIIETGLFEELNDPNRPTGCEEENSSKSGVCLLL

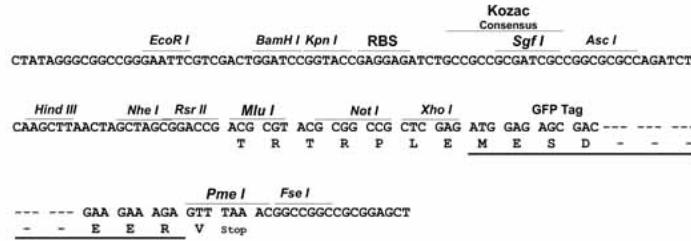
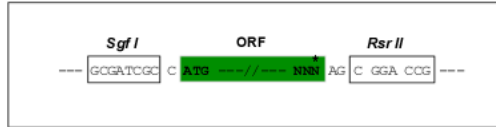
SGP**TRRRLE** - GFP Tag - V

**Restriction Sites:**

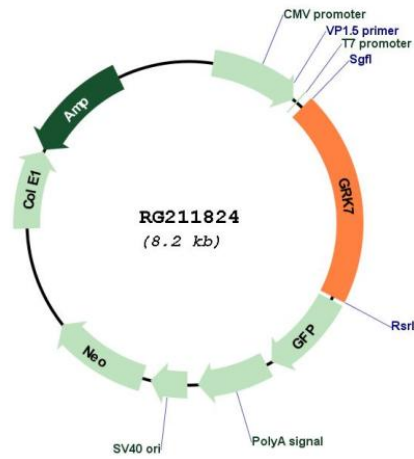
Sgfl-RsrII

Cloning Scheme:

Cloning sites used for ORF Shuttling:



Plasmid Map:



<b>ACCN:</b>	NM_139209
<b>ORF Size:</b>	1659 bp
<b>OTI Disclaimer:</b>	The molecular sequence of this clone aligns with the gene accession number as a point of reference only. However, individual transcript sequences of the same gene can differ through naturally occurring variations (e.g. polymorphisms), each with its own valid existence. This clone is substantially in agreement with the reference, but a complete review of all prevailing variants is recommended prior to use. <a href="#">More info</a>
<b>OTI Annotation:</b>	This clone was engineered to express the complete ORF with an expression tag. Expression varies depending on the nature of the gene.
<b>Components:</b>	The ORF clone is ion-exchange column purified and shipped in a 2D barcoded Matrix tube containing 10ug of transfection-ready, dried plasmid DNA (reconstitute with 100 ul of water).
<b>Reconstitution Method:</b>	<ol style="list-style-type: none"><li>1. Centrifuge at 5,000xg for 5min.</li><li>2. Carefully open the tube and add 100ul of sterile water to dissolve the DNA.</li><li>3. Close the tube and incubate for 10 minutes at room temperature.</li><li>4. Briefly vortex the tube and then do a quick spin (less than 5000xg) to concentrate the liquid at the bottom.</li><li>5. Store the suspended plasmid at -20°C. The DNA is stable for at least one year from date of shipping when stored at -20°C.</li></ol>
<b>RefSeq:</b>	<a href="#">NM_139209.2</a> , <a href="#">NP_631948.1</a>
<b>RefSeq Size:</b>	1746 bp
<b>RefSeq ORF:</b>	1662 bp
<b>Locus ID:</b>	131890
<b>UniProt ID:</b>	<a href="#">Q8WTQ7</a>
<b>Cytogenetics:</b>	3q23
<b>Protein Families:</b>	Druggable Genome, Protein Kinase
<b>Protein Pathways:</b>	Chemokine signaling pathway, Endocytosis
<b>Gene Summary:</b>	This gene encodes a member of the guanine nucleotide-binding protein (G protein)-coupled receptor kinase subfamily of the Ser/Thr protein kinase family. It is specifically expressed in the retina and the encoded protein has been shown to phosphorylate cone opsins and initiate their deactivation. [provided by RefSeq, Jul 2008]