

## Product datasheet for **RG211812**

### **ROD1 (PTBP3) (NM\_005156) Human Tagged ORF Clone**

#### **Product data:**

Product Type:	Expression Plasmids
Product Name:	ROD1 (PTBP3) (NM_005156) Human Tagged ORF Clone
Tag:	TurboGFP
Symbol:	PTBP3
Synonyms:	ROD1
Mammalian Cell Selection:	Neomycin
Vector:	pCMV6-AC-GFP (PS100010)
E. coli Selection:	Ampicillin (100 ug/mL)



[View online »](#)

**ORF Nucleotide Sequence:**

>RG211812 representing NM\_005156  
 Red=Cloning site Blue=ORF Green=Tags(s)

TTTTGTAATACGACTCACTATAGGGCGGCCGGAATTCGTCGACTGGATCCGGTACCGAGGAGATCTGCC  
 GCC**CGCATCGCC**

ATGGATGGTGTGTTACAGATCTTATAACAGTCGGTTAAAGCGGGGATCTGATGAGCTTCTTTCTCTG  
 GCATCATTAAACGGACCTTTACCATGAATAGTTCTACTCCTTCTACAGCTAATGGGAATGACAGCAAGAA  
 ATTTAAACGAGATAGACCTCCCTGTTCCGCTTCCCGTGTCTCCATCTTCGAAAAATCCATGTGATGTC  
 ACCGAAGCAGAGATCATATCATTAGGTCTACCATTGGCAAAGTAACTAATCTTTTGATGTTGAAAGGAA  
 AAAGCCAGGCTTTCTTAGAAATGGCTTCTGAGGAAGCTGCCGTTACTATGGTGAATTATTACACTCCTAT  
 TACTCCTCACCTTCGAAGCCAGCCTGTTTATATTCAGTATTCCAATCACAGAGAAGCTAAGACTGACAAT  
 CTACCTAATCAAGCTCGAGCCAAAGCTGCACTGCAGGCTGTCAGTGCCGTCGAATCAGGAAGCCTGGCCC  
 TTTCTGGAGGTCCTTCCAATGAAGGCACAGTCTACCTGGGCAGAGCCCTGTGCTTCGAATAATTATTGA  
 AAACCTCTTTACCTGTACCCTGGAAGTTCTTCATCAGATATTTCTAAATTTGGCACAGTCTTGAAG  
 ATTATCACCTTTACAAAGAATAATCAGTTTCAAGCCTTGCTTCAGTATGCTGACCCAGTAAATGCACATT  
 ATGCCAAAATGGCTCTGGATGGCCAGAATATCTATAATGCATGCTGCACTCTGCGCATTGACTTCTCCAA  
 GCTCACCAGCCTTAATGTGAAATATAATAATGACAAAAGCAGAGACTTCACTCGCTTAGACCTTCTACT  
 GGTGATGGCCAGCCATCCCTTGAACCCCTATGGCTGCTGCTTTTGGTGCACCGGTATAATTTCTTAC  
 CATATGCAGGGGCTGCTGGATTTGCCCCAGCCATTGGATTTCTCAAGCTACAGGCTATCAGTTCACGC  
 TGTTCTGGAGCTCTGGTCTCTACAATCACCTCTTCTGCTGCACTGGAAGGATGGCCATTCTGGG  
 GCTAGTGGTATACCAGGAAATCTGTTCTACTCGTCACAAATCTCAATCCTGATCTTATCACACCACATG  
 GGCTTTTTATCCTATTTGGAGTCTATGGTGTACATCGAGTGAAGATTATGTTTAATAAGAAAGAAAA  
 TGCCCTTGTTTCAGATGGCGGATGCAAAATCAAGCTCAGCTAGCAATGAACCATCTAAGTGGTCAGAGACTT  
 TATGGGAAAGTGCTTCGTGCTACACTGTCCAAACATCAAGCAGTACAGCTTCTCGAGAGGGACAAGAAG  
 ACCAAGGTCTGACTAAGGATTTAGCAATAGTCTTTGCATCGCTTAAAAAGCCGGGCTCTAAAAACTT  
 CCAGAATATCTTCCACCATCAGCCACTCTGCATCTTCCAAACATTCCCCTTCTGTTACAGTGGATGAT  
 CTGAAGAACCCTTTTCATAGAAGCTGGATGTTTCAAGGCTTTTAAATCTTTCAGAAAGATCGCAAAA  
 TGGCGCTCATTCAATTGGGATCTGTGGAAGAAGCAATTCAGGCCCTCATTGAGCTTCATAACCATGACCT  
 TGGAGAAAATCACCACTCAGAGTTTCTTCTCAAATCTACAATC

**ACGCGTACGCGGCCGCTCGAG** - GFP Tag - GTTTAA

**Protein Sequence:**

>RG211812 representing NM\_005156  
 Red=Cloning site Green=Tags(s)

MDGVVVDLITVGLKRGSDLELLSGIINGPFTMNSSTPSTANGNDSKFKRDRPPCSPSRVLHLRKPICDV  
 TEAEIISLGLPFGKVTNLLMLKGSQAFLEMASEEAAVTMVNYYPITPHLRSQPVYIQYSNHRELKTDN  
 LPNQARAQALQAVSAVQSGSLALSGGPSNEGTVLPGQSPVLRRIIENLFYPVTLEVLHQIFSKFGTVLK  
 IITFTKNNQFQALLQYADPVNAHYAKMALDQNIYNACCTLRIDFSKLTSLNVKYNNDKSRDFTRLDLPT  
 GDGQPSLEPPMAAAFAPGPIISSPYAGAAGFAPAIIGFPQATGLSVPVAVGALGPLITSSAVTGRMAIPG  
 ASGIPGNSVLLVTNLNPDLPITPHGLFILFGVYGDVHRVKIMFNKKNALVQMADANQAQLAMNHL SGQRL  
 YGKVLRLATLSKHQAVQLPREGQEDQGLTKDFSNSPLHRFKKPGSKNFQNIFFPSATLHLSNIPPSVTVDD  
 LKNLFI EAGCSVKAFKFFQKDRKMAL IQLGSVEEAIQALIELHNHDLGENHHLRVSFSKSTI

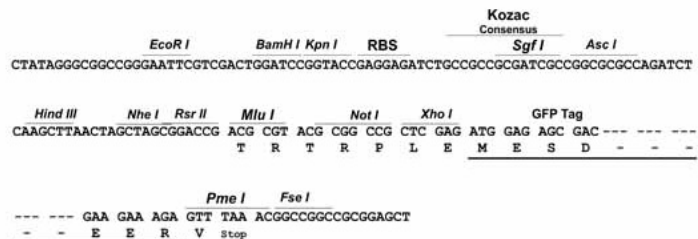
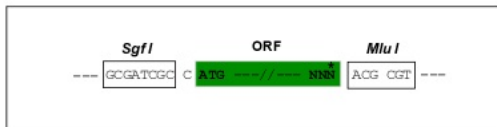
**TRTRPLE** - GFP Tag - V

**Restriction Sites:**

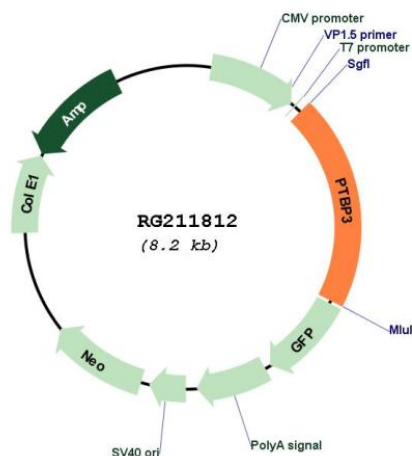
Sgfl-MluI

### Cloning Scheme:

Cloning sites used for ORF Shutting:



### Plasmid Map:



<b>ACCN:</b>	NM_005156
<b>ORF Size:</b>	1656 bp
<b>OTI Disclaimer:</b>	The molecular sequence of this clone aligns with the gene accession number as a point of reference only. However, individual transcript sequences of the same gene can differ through naturally occurring variations (e.g. polymorphisms), each with its own valid existence. This clone is substantially in agreement with the reference, but a complete review of all prevailing variants is recommended prior to use. <a href="#">More info</a>
<b>OTI Annotation:</b>	This clone was engineered to express the complete ORF with an expression tag. Expression varies depending on the nature of the gene.
<b>Components:</b>	The ORF clone is ion-exchange column purified and shipped in a 2D barcoded Matrix tube containing 10ug of transfection-ready, dried plasmid DNA (reconstitute with 100 ul of water).
<b>Reconstitution Method:</b>	<ol style="list-style-type: none"><li>1. Centrifuge at 5,000xg for 5min.</li><li>2. Carefully open the tube and add 100ul of sterile water to dissolve the DNA.</li><li>3. Close the tube and incubate for 10 minutes at room temperature.</li><li>4. Briefly vortex the tube and then do a quick spin (less than 5000xg) to concentrate the liquid at the bottom.</li><li>5. Store the suspended plasmid at -20°C. The DNA is stable for at least one year from date of shipping when stored at -20°C.</li></ol>
<b>RefSeq:</b>	<a href="#">NM_005156.7</a>
<b>RefSeq Size:</b>	2997 bp
<b>RefSeq ORF:</b>	1659 bp
<b>Locus ID:</b>	9991
<b>UniProt ID:</b>	<a href="#">O95758</a>
<b>Cytogenetics:</b>	9q32
<b>Domains:</b>	RRM
<b>Protein Families:</b>	Druggable Genome
<b>Gene Summary:</b>	The protein encoded by this gene binds RNA and is a regulator of cell differentiation. The encoded protein preferentially binds to poly(G) and poly(U) sequences in vitro. Several transcript variants encoding different isoforms have been found for this gene. [provided by RefSeq, Oct 2011]