

## Product datasheet for **RG211797**

### Oxytocin Receptor (OXTR) (NM\_000916) Human Tagged ORF Clone

#### Product data:

Product Type:	Expression Plasmids
Product Name:	Oxytocin Receptor (OXTR) (NM_000916) Human Tagged ORF Clone
Tag:	TurboGFP
Symbol:	Oxytocin Receptor
Synonyms:	OT-R; OTR
Mammalian Cell Selection:	Neomycin
Vector:	pCMV6-AC-GFP (PS100010)
E. coli Selection:	Ampicillin (100 ug/mL)
ORF Nucleotide Sequence:	>RG211797 representing NM_000916 Red=Cloning site Blue=ORF Green=Tags(s)

TTTTGTAATACGACTCACTATAGGGCGGCCGGAATTCGTCGACTGGATCCGGTACCGAGGAGATCTGCC  
GCC**CGATCGCC**

ATGGAGGGCGCGCTCGCAGCCAACTGGAGCGCCGAGGCAGCCAACGCCAGCGCCGCGCCGGGGCCG  
AGGGCAACCGCACCGCCGACCCCGGGCGCAACGAGGCCCTGGCGCGCGTGGAGGTGGCGGTGCTGTG  
TCTCATCTGCTCCTGGCGCTGAGCGGGAACGCGTGTGTGCTGCTGGCGTGGCACCACAGCCAGAAG  
CACTCGCGCTCTTCTTTCATGAAGCACCTAAGCATCGCCGACCTGGTGGTGGCAGTGTTCAGGTGC  
TGCCGAGTTGCTGTGGACATCACCTTCGCTTCTACGGGCCGACCTGCTGTGCCGCTGGTCAAGTA  
CTTGCAGGTGGTGGCATGTTCCGCTCCACCTACCTGCTGCTGCTCATGTCCCTGGACCGCTGCCTGGCC  
ATCTGCCAGCCGCTGCGCTCGCTGCGCCGCCGACCGACCGCCTGGCAGTGTCCGACGTTGGCTCGGCT  
GCCTGGTGGCCAGCGCGCCGAGGTGCACATCTTCTCTGCGCGAGGTGGCTGACGGCGTCTTCGACTG  
CTGGGCGCTTTCATCCAGCCCTGGGGACCCAAGGCCTACATCACATGGATCACGCTAGCTGTCTACATC  
GTGCCGTCATCGTGTGCTGCTGCTACGGCCTTATCAGTTCAGATCTGGCAGAATTGCGGCTCA  
AGACCGCTGCAGCGCGCGCCGAGGGCCAGAGGGCGCGCGGCTGGCGATGGGGGCGCGTGGCCCT  
GGCGGTGTCAGCAGCGTCAAGTCACTCCAAGGCCAAGATCCGACCGTCAAGATGACTTTCATCATC  
GTGCTGGCCTTTCATCGTGTGCTGGACGCTTCTTCTTCTGTCAGATGTGGAGCGTGGGATGCCAAG  
CGCCCAAGGAAGCCTCGGCCTTTCATCATCGTGTGCTGCTGCTGCGCCAGCCTCAACAGCTGCTGCAACCCCTG  
GATCTACATGCTGTTACGGGCCACCTTTCACGAACTCGTGCAGCGCTTCTGTGCTGCTCCGCCAGC  
TACCTGAAGGGCAGACGCTGGGAGAGACGAGTGCCAGCAAAAAGAGCAACTCGTCTCCTTGTCTGTA  
GCCATCGCAGCTCCAGCCAGAGGAGTGTCCAGCCATCCAGGCG

AGCGGACCGACGCGTACGCGGCCGCTCGAG - GFP Tag - GTTTAA



[View online »](#)

**Protein Sequence:** >RG211797 representing NM\_000916  
 Red=Cloning site Green=Tags(s)

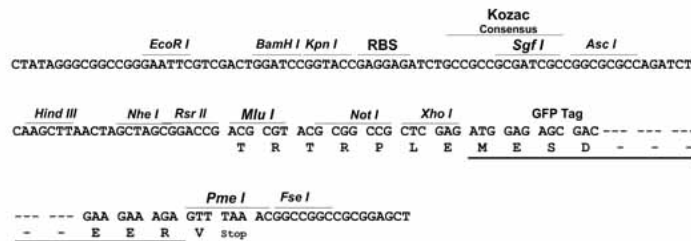
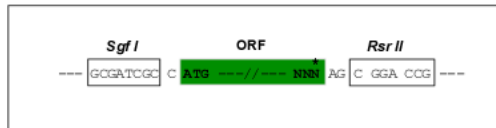
MEGALAAANWSAEANASAAPPGAEGNRTAGPPRRNEALARVEVAVLCLILLLALSGNACVLLALRTTRQK  
 HSRLFFFMKHL SIADL VVAVFQVLPQLLWDITFRFYGPDLLCRLVKYLQVVMFASTYLLLLMSLDRCLA  
 ICQPLRSLRRRTDRLAVLATWLGLVASAPQVHIFSLREVADGVFDCWAVFIQPWGPKEYITWITLAVYI  
 VPIVLAACYGLISFKIWQNLRLKTAATAAAEAPEGAAAGDGGRRVALARVSSVKLISKAKIRTVKMTFII  
 VLAFIGVWTPFFVQMWVWDANAPKEASAFIIIVMLLASLNSCCNPWIYMLFTGHLFHEL VQRFLCCSAS  
 YLKGRRRLGETSASKKSNSSSFVLSHRSSQRSCSQPSTA

SGPTRRRLE - GFP Tag - V

**Restriction Sites:** SgfI-RsrII

**Cloning Scheme:**

Cloning sites used for ORF Shuttling:



**ACCN:** NM\_000916

**ORF Size:** 1167 bp

**OTI Disclaimer:** The molecular sequence of this clone aligns with the gene accession number as a point of reference only. However, individual transcript sequences of the same gene can differ through naturally occurring variations (e.g. polymorphisms), each with its own valid existence. This clone is substantially in agreement with the reference, but a complete review of all prevailing variants is recommended prior to use. [More info](#)

**OTI Annotation:** This clone was engineered to express the complete ORF with an expression tag. Expression varies depending on the nature of the gene.

**Components:** The ORF clone is ion-exchange column purified and shipped in a 2D barcoded Matrix tube containing 10ug of transfection-ready, dried plasmid DNA (reconstitute with 100 ul of water).

**Reconstitution Method:**

1. Centrifuge at 5,000xg for 5min.
2. Carefully open the tube and add 100ul of sterile water to dissolve the DNA.
3. Close the tube and incubate for 10 minutes at room temperature.
4. Briefly vortex the tube and then do a quick spin (less than 5000xg) to concentrate the liquid at the bottom.
5. Store the suspended plasmid at -20°C. The DNA is stable for at least one year from date of shipping when stored at -20°C.

**Note:** Plasmids are not sterile. For experiments where strict sterility is required, filtration with 0.22um filter is required.

**RefSeq:** [NM\\_000916.3](#), [NP\\_000907.2](#)

**RefSeq Size:** 4361 bp

**RefSeq ORF:** 1170 bp

**Locus ID:** 5021

**UniProt ID:** [P30559](#)

**Cytogenetics:** 3p25.3

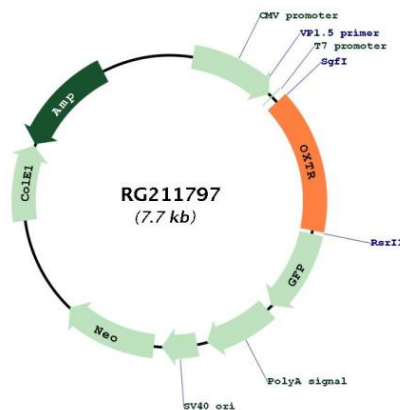
**Domains:** 7tm\_1

**Protein Families:** Druggable Genome, GPCR, Transmembrane

**Protein Pathways:** Calcium signaling pathway, Neuroactive ligand-receptor interaction

**Gene Summary:** The protein encoded by this gene belongs to the G-protein coupled receptor family and acts as a receptor for oxytocin. Its activity is mediated by G proteins which activate a phosphatidylinositol-calcium second messenger system. The oxytocin-oxytocin receptor system plays an important role in the uterus during parturition. [provided by RefSeq, Jul 2008]

### Product images:



Circular map for RG211797