

## Product datasheet for **RG211794**

### **ARHGAP9 (NM\_001080157) Human Tagged ORF Clone**

#### **Product data:**

Product Type:	Expression Plasmids
Product Name:	ARHGAP9 (NM_001080157) Human Tagged ORF Clone
Tag:	TurboGFP
Symbol:	ARHGAP9
Synonyms:	10C; RGL1
Mammalian Cell Selection:	Neomycin
Vector:	pCMV6-AC-GFP (PS100010)
E. coli Selection:	Ampicillin (100 ug/mL)



[View online »](#)

**ORF Nucleotide Sequence:**

>RG211794 representing NM\_001080157  
 Red=Cloning site Blue=ORF Green=Tags(s)

TTTTGTAATACGACTCACTATAGGGCGGCCGGGAATTCGTCGACTGGATCCGGTACCGAGGAGATCTGCC  
 GCC**GCGATCGCC**

ATGCTATCCAGCCGGTGGTGGCCAAGTTCTGGGGATCCTAGGGCTGGGCCCCGAAGCCCTCTCGGG  
 GATCCCAGCTCTGTGCCCTCTATGCCTTACTTATACTGGGGCAGATGGCCAGCAGGTGTCTCTGGCTGA  
 AGGGGATAGGTTCTACTGCTTCGAAAGACCAACTCCGACTGGTGGTTGGCAAGACGCCTAGAAGCTCCC  
 TCCACCTCTCGACCCATCTTCGTCGCCAGCAGCCTATATGATAGAGGAATCCATCCCTTCCAGAGTCCAA  
 CTACCGTCATCCCCGGCCAATTGCTCTGGACTCCTGGGCCGAAGTTGTTTCATGGTTCCCTGGAGGAGTT  
 GTCTCAGGCCCTCCAAGCAGGGCTCAGGCTAGCTCGGAGCAGCCTCTCCACTTCCCGCAAATGTGT  
 AGGAGCGTCAGCACTGACAATCTGAGCCCCAGCCTTCTGAAGCCTTCCAGGAAGACCAAGCGGAAGAT  
 CCCTCTCCAGGAAGACTTGCCGTGAGAAGCCAGTGCCAGCACAGCAGGCCCCAGCCCCATGTCAGA  
 GCCCCTGTGTACTGTAACCTGGTGGACCTTCGCCGTGTCTCGGTCCCACCCAGGCCCTGCATGC  
 CCCTGTGTCAGAGGCTGGATGCCTGGGAGCAGCACTGGACCCAACTCTGGACGCTGTTCTACATAA  
 ATTCACTGACTGGCTGCAAGTCCTGGAAGCCCCGCGCCGAGTCGCAGCGAGACGAACCTGGCTCCAT  
 GGAGGGGACACAGACCCTGAAGAGGAACAATGATGTCTGCAACCTCAGGCAAAGGGCTTCAGATCTGAC  
 ACAGGGACCCAGAACCCTTGACCCACAGGGTCACTCAGCCTCAGCCAACGCACCTCGCAGCTTGACC  
 CTCCAGCCTTGCAAGGCCCTCGACCTCTGCCGAGCTCCTGGACGACCCCATGAGGTGGAAAAGTCGGG  
 TCTGCTCAACATGACCAAGATTGCCAAGGGGGCGCAAGCTCAGGAAGAACTGGGGCCCGTCTTGGGTG  
 GTGTTAACGGGTAACAGCCTGGTGTCTACCGAGAGCCACCGCCAGCAGGCCCTCTCAGGCTGGGGAC  
 CAGCGGTAGCCGGCCGAAAGTAGCGTGGACCTGCGCGGGCGGCCCTGGCGCACGGCCACCTGTC  
 CAGCCCGCGCAACGTCTGCACATCCGCACGATCCCTGGCCACGAGTTCCTGCTGCAGTCGGACCCAG  
 ACAGAGCTGCGAGCCTGGCACCGCGCTGCGGACTGTCATCGAGCGGCTGGATCGGGAGAACCCCTGG  
 AGCTGCGTCTGTGCGGCTCTGGACCCGCGGAGCTGAGCGCCGGGAGGACGAAGAAGAGGAGTCGGAGCT  
 GGTGTCCAAGCCGCTGCTGCGCCTCAGCAGCCGCGGAGCTCCATTGGGGGCCCGAAGGCCAGCAGCAG  
 AACCGCTGCGCAACAACTAAAGCGGCTCATCGCAAGAGACCGCCCTTACAAAGCCTGCAGGAGCGGG  
 GTCTGCTCCGAGACCAGGTGTCGGCTGCCAGTTGGAATCACTCTGCCAGCGGGAAGGAGACACGGTGCC  
 CAGCTTTTTCGGCTCTGCATTGCTGCTGTGGATAAAAGAGGTCTAGATGTGGATGGCATTATCGGGTG  
 AGCGGAACTTGGCAGTGGTCCAGAAGCTTCGCTTCTGGTGGACAGAGCGTGGGTACCTCCGATG  
 GGAGGTATGTGTTCCAGAACAGCCAGGACAAGAAGGTGCGTTAGATTTGGACAGTACTAGTGGGATGA  
 CATTATGTGGTACCGGAGCCCTGAAGCTTTTTCTCCGGGAGCTGCCCCAGCCTCTGGTCCACCACCTG  
 CTGCTGCCCATTTCCGTGCTGCCCTTGGG

**ACGCGT**ACGCGGCCGCTCGAG – GFP Tag – GTTTAA

**Protein Sequence:**

>RG211794 representing NM\_001080157  
 Red=Cloning site Green=Tags(s)

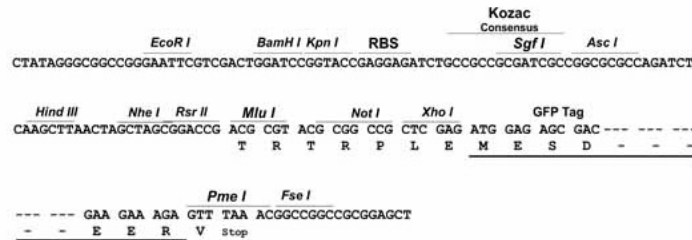
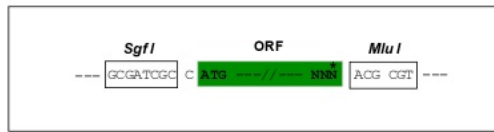
MLSSRWVPSSWGILGLGPRSPRGSQCALYAFTYTADGQQVSLAEGDRFLLLRKTNSDWWLARLEAP  
 STSRPIFVPAAYMIEESIPSQSPTTIVIPQQLWTPGPKLFHGSLEELSQLPSRAQASSEQPPLPRKMC  
 RSVSTDNLSPSLLKPFQEGPSGRSLSQEDLPSEASASTAGPQPLMSEPPVYCNLVDLRRCPSPPPGPAC  
 PLLQRLDAWEQHLDPNNGRCFYINSLTGCKSWKPPRRSRSETNPGSMEGTQTLKRNDVLPQAKGFRSD  
 TGTPEPLDPQGSLSLQRTSQLDPPALQAPRPLPQLDDPHEVEKSGLLNMTKIAQGGKRLRKNWGPSWV  
 VLTGNLSLVFYREPPPTAPSSGWGPAGSRPESSVDLRGAALAHGRHLSSRRNVLHIRTIPGHEFLQSDHE  
 TELRAWHRALRTVIERLDRENPLELRLSGSPAEL SAGEDEEEESELVSKPLRLSSRRSSIRGPEGTEQ  
 NRVRNKLRKLIKRPLQLSERGLLRDQVFGQLESLESLCQREGDTVPSFLRLCIAAVDKRGLDVGDIYRV  
 SGNLAVVQKLRFLVDRERAVTSDGRYVFPEQPQEGRLDLSTEWDDIHVVGTGALKLFLRELQPLVPPL  
 LLPHFRAALG

**TRTRPLE** – GFP Tag – V

Restriction Sites: SgfI-MluI

Cloning Scheme:

Cloning sites used for ORF Shutting:



ACCN: NM\_001080157

ORF Size: 1920 bp

OTI Disclaimer: The molecular sequence of this clone aligns with the gene accession number as a point of reference only. However, individual transcript sequences of the same gene can differ through naturally occurring variations (e.g. polymorphisms), each with its own valid existence. This clone is substantially in agreement with the reference, but a complete review of all prevailing variants is recommended prior to use. [More info](#)

OTI Annotation: This clone was engineered to express the complete ORF with an expression tag. Expression varies depending on the nature of the gene.

Components: The ORF clone is ion-exchange column purified and shipped in a 2D barcoded Matrix tube containing 10ug of transfection-ready, dried plasmid DNA (reconstitute with 100 ul of water).

Reconstitution Method:

1. Centrifuge at 5,000xg for 5min.
2. Carefully open the tube and add 100ul of sterile water to dissolve the DNA.
3. Close the tube and incubate for 10 minutes at room temperature.
4. Briefly vortex the tube and then do a quick spin (less than 5000xg) to concentrate the liquid at the bottom.
5. Store the suspended plasmid at -20°C. The DNA is stable for at least one year from date of shipping when stored at -20°C.

RefSeq: [NM\\_001080157.2](#)

RefSeq Size: 2604 bp

RefSeq ORF: 1923 bp

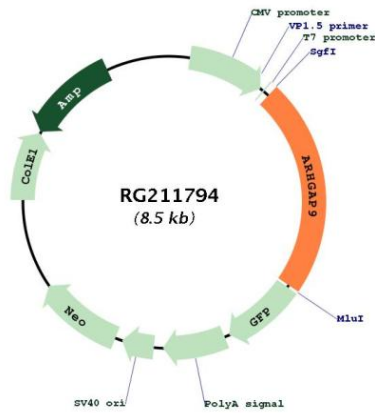
Locus ID: 64333

UniProt ID: [Q9BRR9](#)

**Cytogenetics:** 12q13.3

**Gene Summary:** This gene encodes a member of the Rho-GAP family of GTPase activating proteins. The protein has substantial GAP activity towards several Rho-family GTPases in vitro, converting them to an inactive GDP-bound state. It is implicated in regulating adhesion of hematopoietic cells to the extracellular matrix. Multiple transcript variants encoding different isoforms have been found for this gene. [provided by RefSeq, Jul 2008]

**Product images:**



Circular map for RG211794