

Product datasheet for **RG211767**

BRSK1 (NM_032430) Human Tagged ORF Clone

Product data:

Product Type:	Expression Plasmids
Product Name:	BRSK1 (NM_032430) Human Tagged ORF Clone
Tag:	TurboGFP
Symbol:	BRSK1
Synonyms:	hSAD1
Mammalian Cell Selection:	Neomycin
Vector:	pCMV6-AC-GFP (PS100010)
E. coli Selection:	Ampicillin (100 ug/mL)



[View online »](#)

ORF Nucleotide Sequence:

>RG211767 representing NM_032430
 Red=Cloning site Blue=ORF Green=Tags(s)

TTTTGTAATACGACTCACTATAGGGCGGCCGGAATTCGTCGACTGGATCCGGTACCGAGGAGATCTGCC
 GCC**CGGATCGCC**

ATGTCGTCGGGGCCAAGGAGGGAGGTGGGGGCTCTCCCGCTACCACCTCCCCACCCCCACCCCACC
 CACCCCAGCACGCCAATATGTGGGCCCTATCGGCTGGAGAAGACGCTGGGCAAAGGACAGACAGGGCT
 GGTAAACTCGGGTCCACTGCATCACGGTCAGAAGGTCGCCATCAAGATCGTGAACCGGAGAAAGCTG
 TCGGAGTCGGTGCTGATGAAGGTGGAGCGGAGATCGCCATCCTGAAGCTCATCGAACCCACATGTCC
 TCAAGCTCCACGACGTCTACGAGAACAAGAAATATTTGTACCTGGTTCTGGAGCACGTCTCGGGGGTGA
 GCTATTCGACTACCTGGTAAAGAAGGGGAGACTGACGCCCAAGGAGGCCGAAAGTTCTTCGCCAGATT
 GTGTCTGCGCTGGACTTCTGCCACAGCTACTCCATCTGCCACAGAGACCTAAAGCCCGAGAACCTGCTTT
 TGGATGAGAAAAACAACATCCGCATTGCAGACTTCGGCATGGCGTCCCTGCAGGTGGGGGACAGCCTCCT
 GGAGACCAGCTCGGGTCCCCCATTATGCGTGTCCAGAGGTGATTAAGGGGAAAAATATGATGGCCGC
 CGGCAGACATGTGGAGCTGTGGAGTATCCTCTTCGCCCTGCTCGTGGGGGCTCTGCCCTTTGATGACG
 ACAACCTCCGCCAGCTGCTGGAGAAGGTGAAACGGGGCGTCTTCCACATGCCCCACTTCATTCTCCAGA
 TTGCCAGAGCCTCCTGAGGGGAATGATCGAAGTGGAGCCGAAAAAGGCTCAGTCTGGAGCAAATTCAG
 AAACATCCTTGGTACCTAGGCGGAAACACGAGCCAGACCCGTGCCTGGAGCCAGCCCCTGGCCGCCGGG
 TAGCCATGCGGAGCCTGCCATCCAACGGAGAGCTGGACCCGACGTCCTAGAGAGCATGGCATACTGGG
 CTGCTTCAGGGACCGGAGAGGCTGCATCGCGAGCTGCGCAGTGAGGAGGAGAACCAAGAAAAGATGATA
 TATTATCTGCTTTTGGATCGGAAGGAGCGGTATCCAGCTGTGAGGACCAGGACCTGCCTCCCCGGAATG
 ATGTTGACCCCCCGGAAGCGTGTGGATTCTCCCATGCTGAGCCGTACGGGAAGCGGACAGAGAGCG
 GAAGTCCATGGAAGTCTGAGCATCACCGATGCCGGGGTGGTGGCTCCCCTGTACCCACCCGACGGGCC
 TTGGAGATGGCCAGCACAGCCAGAGATCCCGTAGCGTCACTGGAGCCTCCACGGGTCTGTCTCCAGCC
 CTCTAAGCAGCCCAAGGAGTCCGGTCTTTTCTTTTACCAGGAGCCGGGGCTGGAGATGAGGCTCGAGG
 CGGGGGCTCCCCGACTTCCAAAACGACAGCCTGCCTTCTCGGGGCCAGGGGTGGGGGCGCCGGGGAG
 CAGCCCCGCCCCCAGTCCCGCTCCACACCCCTGCCCGCCCCCAGGCTCCCCGCGCTCCTCTGGCG
 GGACCCCTTGCCTCTGCACACGCCCCGGCCAGTCCCACCGGACCCCGGGGACAACACCACC
 CCCCAGCCCCGGCGTGGCGTGGGGGAGCCGCTGGAGGAGTCTGCTCAACTCCATCCGCAACAGCTTC
 CTGGGCTCCCCTCGCTTACCAGCGCAAGATGCAGGTCCCTACCGCTGAGGAGATGTCCAGCTTGACGC
 CAGAGTCTCCCCGGAGCTGGCAAACGCTCCTGGTTCGGGAACCTCATCTCCTTGACAAAAGAAGAACA
 AATATTCCTCGTCTAAAGGACAAACCTCTCAGCAGCATCAAAGCAGACATCGTCCATGCCTTTCTGTCTG
 ATCCCCAGCCTGAGTACAGTGTGCTGTACAGACCAGCTTACGGGCGGAGTACAAGGCCAGTGGCGGCC
 CCTCCGCTTCCAAAAGCCCGTCCGCTTCCAGGTGGACATCAGCTCCTCTGAGGGTCCAGAGCCCTCCCC
 GCGACGGGACGGCAGCGGAGGTGGTGGCATCTACTCCGTCACCTTCACTCTATCTCGGGTCCCAGCCGT
 CGGTTCAAGCGAGTGGTGGAGACCATCCAGGCACAGCTCCTGAGCACTCATGACCAGCCCTCCGTGCAGG
 CCCTGGCAGACGAGAAGAACGGGGCCAGACCCGGCTGCTGGTCCCCACCCGAAGCCTGCAGCCCCC
 ACCCGGCCGCCAGACCAGAGCTGAGCAGCTCTCCCCGCGAGGCCCCCAAGGACAAGAAGCTCCTG
 GCCACCAACGGGACCCCTCTGCC

ACGCGTACGCGGCCGCTCGAG - GFP Tag - GTTTAA

Protein Sequence: >RG211767 representing NM_032430
 Red=Cloning site Green=Tags(s)

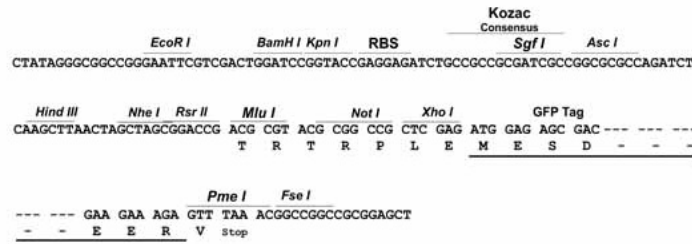
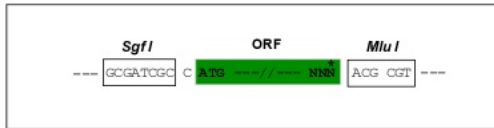
```
MSSGAKEGGGGSPAYHLPHPHPPQHAQYVGPYRLEKTLGKGQTGLVKLGVHCITGQKVAIKIVNREKL
SESVLMKVEREIAILKLIEHPHVLKLDVYENKKYLYLVLEHVSGGELFDYLVKKGRLTPKEARKFFRQI
VSALDFCHSYSICHRDLKPENLLLDEKNNIRIADFGMASLQVGDLSLETSCGSPHYACPEVIKGEKYDGR
RADMWSCGVILFALLVGALPFDDNLRQLLEKVKRGVFMHPHFIPPDCQSLLRGMIEVEPEKRLSLEQIQ
KHPWYLGKHEPDPCLEPAPGRRVAMRSLPSNGELDPDVLLESMASLGCFRDRERLHREL RSEENQEKMI
YYLLLLDRKERYPSCEDQDLPPRNDVPPRKRVDSPMLSRHGKRRPERKSMEVLSITDAGGGGSPVPTRRR
LEMAQHSQRSVSGASTGLSSSPLSSPRSPVFSFPEPGAGDEARGGGSPSTKTQTLPSRGRGGGAGE
QPPPPSARSTPLPGPPGSPRSSGGTPLHSLHTPRASPTGTPGTTPPPSPGGVGGAAWRSRLNSIRNSF
LGSPRFHRRKMVPTAEEMSSLTPESP ELAKRSWFGNFISLDKEEQIFLVLDKDKPLSSIKADIVHAFLS
IPSLSHSVLSQTSFRAEYKASGGPSVFKPVRVQVDISSSEGPEPSRRDGSGGGIYSVFTLISGPSR
RFKRVVETIQALLSTHDQPSVQALADEKNGAQTRPAGAPPRSLQPPGPRDPPELSSSPRRGPPKDKLL
ATNGTPLP
```

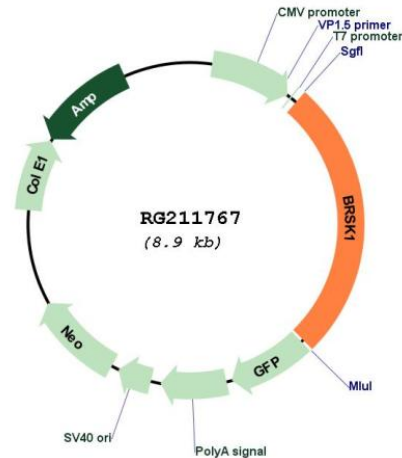
TRTRPLE - GFP Tag - V

Restriction Sites: SgfI-MluI

Cloning Scheme:

Cloning sites used for ORF Shuttling:



Plasmid Map:


ACCN: NM_032430

ORF Size: 2334 bp

OTI Disclaimer: Due to the inherent nature of this plasmid, standard methods to replicate additional amounts of DNA in *E. coli* are highly likely to result in mutations and/or rearrangements. Therefore, OriGene does not guarantee the capability to replicate this plasmid DNA. Additional amounts of DNA can be purchased from OriGene with batch-specific, full-sequence verification at a reduced cost. Please contact our customer care team at custsupport@origene.com or by calling 301.340.3188 option 3 for pricing and delivery.

The molecular sequence of this clone aligns with the gene accession number as a point of reference only. However, individual transcript sequences of the same gene can differ through naturally occurring variations (e.g. polymorphisms), each with its own valid existence. This clone is substantially in agreement with the reference, but a complete review of all prevailing variants is recommended prior to use. [More info](#)

OTI Annotation: This clone was engineered to express the complete ORF with an expression tag. Expression varies depending on the nature of the gene.

Components: The ORF clone is ion-exchange column purified and shipped in a 2D barcoded Matrix tube containing 10ug of transfection-ready, dried plasmid DNA (reconstitute with 100 ul of water).

Reconstitution Method:

1. Centrifuge at 5,000xg for 5min.
2. Carefully open the tube and add 100ul of sterile water to dissolve the DNA.
3. Close the tube and incubate for 10 minutes at room temperature.
4. Briefly vortex the tube and then do a quick spin (less than 5000xg) to concentrate the liquid at the bottom.
5. Store the suspended plasmid at -20°C. The DNA is stable for at least one year from date of shipping when stored at -20°C.

RefSeq:	NM_032430.2
RefSeq Size:	3109 bp
RefSeq ORF:	2337 bp
Locus ID:	84446
UniProt ID:	Q8TDC3
Cytogenetics:	19q13.42
Protein Families:	Druggable Genome, Protein Kinase
Gene Summary:	<p>Serine/threonine-protein kinase that plays a key role in polarization of neurons and centrosome duplication. Phosphorylates CDC25B, CDC25C, MAPT/TAU, RIMS1, TUBG1, TUBG2 and WEE1. Following phosphorylation and activation by STK11/LKB1, acts as a key regulator of polarization of cortical neurons, probably by mediating phosphorylation of microtubule-associated proteins such as MAPT/TAU at 'Thr-529' and 'Ser-579'. Also regulates neuron polarization by mediating phosphorylation of WEE1 at 'Ser-642' in post-mitotic neurons, leading to down-regulate WEE1 activity in polarized neurons. In neurons, localizes to synaptic vesicles and plays a role in neurotransmitter release, possibly by phosphorylating RIMS1. Also acts as a positive regulator of centrosome duplication by mediating phosphorylation of gamma-tubulin (TUBG1 and TUBG2) at 'Ser-131', leading to translocation of gamma-tubulin and its associated proteins to the centrosome. Involved in the UV-induced DNA damage checkpoint response, probably by inhibiting CDK1 activity through phosphorylation and activation of WEE1, and inhibition of CDC25B and CDC25C.[UniProtKB/Swiss-Prot Function]</p>