

## Product datasheet for **RG211750**

### CAIN (CABIN1) (NM\_012295) Human Tagged ORF Clone

#### Product data:

Product Type:	Expression Plasmids
Product Name:	CAIN (CABIN1) (NM_012295) Human Tagged ORF Clone
Tag:	TurboGFP
Symbol:	CABIN1
Synonyms:	CAIN; KB-318B8.7; PPP3IN
Mammalian Cell Selection:	Neomycin
Vector:	pCMV6-AC-GFP (PS100010)
E. coli Selection:	Ampicillin (100 ug/mL)
ORF Nucleotide Sequence:	>RG211750 representing NM_012295 Red=Cloning site Blue=ORF Green=Tags(s)

TTTTGTAATACGACTCACTATAGGGCGGCCGGAATTCGTCGACTGGATCCGGTACCGAGGAGATCTGCC  
GCC**CGATCGCC**

ATGATTCGAATTGCAGCCTTAAATGCCAGCTCCACCATTGAGGATGATCATGAAGGAAGCTTTAAAAGTC  
ACAAAACCCAGACAAAGGAGGCTCAGGAAGCAGAGGCTTTTGCAATTGTACCACAAGGCCCTTGATCTGCA  
GAAACATGACCGTTTGAGGAGTCTGCCAAAGCCTACCATGAGCTCTGGAGGCGAGCCTGCTGCGGGAG  
GCAGTTTCATCCGGTGATGAGAAAGAGGGTTGAAACACCCTGGGCTGATACTGAAATATCCACTTATA  
AGAACTTGGCCCAGCTGGCAGCCAGCGGAGGATCTGGAGACAGCCATGGAGTTCTACTTAGAGGCAGT  
GATGCTGGACTCCACAGATGTCAACCTCTGGTATAAGATTGGACATGTGGCCCTGAGGCTCATCCGGATC  
CCCCTGGCTCGCCATGCTTTTGAGGAAGGGCTGCGGTGCAATCCTGACCACTGGCCCTGTTTGGATAACC  
TAATCACTGTCCTGTACACCCTCAGTGATTACACAACATGTCTGTACTTCATCTGCAAAGCTTTGGAGAA  
GGATTGCCGTTACAGCAAAGGGCTGGTCTCAAGGAGAAGATTTTGGAGGAGCAGCCTTGCTCCGGGAG  
GACTCTCTCAGAAATGTTCCCTCAAATGTGACATGTGATTCACGATGTTTCGGTGAGTGCAGCTGAGACAC  
AGGCGATTGTAGATGAGGCCTTGGGGCTGCGAAAAAGAGGCAAGCGCTGATTGTGCGGGAGAAGGAGCC  
GGACCTGAAACTTGTGCAGCCCATTCTTTCTTACCTGGAAGTGCCCGGAGAGAGCTTGCTGGCCATG  
TACAATCATCTCACACCTGTGAGCCCCACGTCCCAGCCTTGGCAAAGGATTGATTTGCGGACTACC  
AGGACCCAGCCAGCCTCTTGAGTCTCCATGGTGGTGACGCCAGTTAAGTGATCCAGCCAAGCACTGT  
CAGCACCAACCCAGCTGTGGCTGTGCGCGAGCCTGTGGTCTCCTACACCTCTGTGGCTACAACAGCTTC  
CCTGTCACAGTCTGGTCTGTTGGAGACAGCGCTCCTGTGGGTGATATTTCTGGGGGAGATAAATCCA  
AGAAAGGGGTAACCGGAAGAAGATTTCAGAAGAGAGTGGAGAAACAGCAAAGCGCGGTCTGCCGTGT  
CCGAAACACCAAGTGCAAAAAGAAGAGAAAGTAGACTCCAGGAGCTTCTGATGAAGTTCTTCCCGTCC  
AGGTTAAGAAAGCTGGACCCTGAGGAGGAAGATGATTCCTTTAATAACTATGAAGTCCAGTCAGAAGCCA  
AACTGAAAGCTTCCAAGCATTGGCCCTCAAAGCTGTCAATTTGACTCAGCCACATTATGGAATCTGA  
AAAGCAGGACGTGCATGAGTTCTGCTGGAGAACCTAACCAACGGGGCATCCTGGAGCTGATGATCGCC



[View online »](#)

TACCTGAAAGCCATGGGCCACAAGTTCTTGGTAAGGTGGCCTCCAGGCTTGGCGGAGGTCGTGCTCAGCG  
TCTACCACAGCTGGAGGAGGCACAGCACCAGCCTGCCAACCCGCTGCTGAGGGACTGCAGCAACAAGCA  
CATCAAGGACATGATGCTGATGTCTCTCTCCTGCATGGAAGTCCAGCTGGACCAGTGGCTGCTGACCAAA  
GGCAGAAGCTCTGCAGTGTCTCCTCGGAACTGTCTGCTGGTATGGTGAATGGCAGATTTGGACCTGACT  
TCCCAGGGACCCACTGCCTGGGTGACCTCCTACAGCTGCATTTGGCTCGTCCCAGCGCGACCTGTTCTGA  
GGATGGTTGGCTGGAGTTTGTGGTCCGTGTTTACTGGCTGAAGGCTCGCTTCTGGCGCTGCAGGGAGAC  
ATGGAGCAGGCCCTGGAGAAGTATGACATCTGCACAGAAATGCTCCAGAGTTCCACCGCCATCCAGGTGG  
AGGCAGGGGCTGAACGAAGAGACATTGTATCCGGCTGCCAACCTCCATAATGACTCTGTGGTTTCCCT  
GGAGGAGATTGATAAGAAGCTGAAGTCGCTGGAGCGGTGCCAGTCCCTGGAGGAGATTACAGCGGCTGTAT  
GAAGCAGGCGACTACAAGGCTGTTGTGCATCTGCTCCGCCCACTTTGTGCACCAGTGGGTTTGACCGGG  
CCAAACACCTGGAGTTTATGACTTCCATTCTGAGAGGCCAGCCAGCTGCTTCTTCTGCAGGACTCCTT  
GCTCCGGTGAAGGACTATCGGCAGTGTGTTGAGTGTCCGATGTGGCTCTGAACGAGGCTGTCCAGCAG  
ATGGTGAAGTCAAGTGGGCTGCCGCCAAGGAGGAGTGGGTGGCCACAGTGAACCACTGCTGATGGGCA  
TCGAGCAGGCCCTCTCTCGGACAGCAGTGGTAGCATCCTGAAGGTATCATCCTCCACCCTGACCTTGT  
GCGGCTCACCAACAACCTCATCCAGGTCATTGACTGCAGCATGGCTGTGCAGGAGGAGGCCAAGGAGCCC  
CAGCTCTCTTCAAGTGTACCCTGGATCATTCTACACCGGATCATCTGGCAGGAGGAAGACACCTTCCATT  
CTCTGTGCCACCAGCAGCAGCTCCAAAACCCAGCGGAGGAAGGGATGTCAGAGACGCCATGCTCCCATC  
CTCCCTCATGCTGCTGAACACAGCCACAGTATTTGGGCAGAAGGTCTGGTGTGCAATTCAGATGGG  
GCTCTGCTGCGATTCTATGTGCGAGTACTCCAGAAGGAAGTGGTGCATCCACCTCTGAAGACACGCACC  
CTTACAAGGAGGAGCTGGAGACAGCCTTGGAGCAGTGTCTACTGCCTGTACAGCTTCCCAGCAAGAA  
GAGTAAGGCCAGGTACCTGGAGGAACACTCGGCCAGCAGGTGGATCTTATATGGGAGGATGCACTGTTC  
ATGTTTGAATTTTTAAGCCCAAGACCTTCTGAAATTTGACAGCTATAAGACCAGCACCTGTCTGTGTA  
ACTTGGCCAACCTACTGAAGAGAATTGCCACATTGTGCCTGCACAGAGAGGCCACCTTAGCCTGGA  
CAAAGTCTCGCCTACATTGAGGGAAGTCAAACTGAGGTACCCTGCCTCCCAGAGGGGGCTACCCCTCC  
CCTCCAGTGGTGAACGAGCTTACTACCTCCTGGCTGATTATCATTTCAAAAACAAGGAGCAGTCCAAGG  
CCATCAAGTTCTACATGCATGACATCTGCATCTGCCCAATAGGTTTGAATCCTGGGCAGGCATGGCTCT  
GGCCCGGGCCAGCCGATTCCAGGACAAGCTGAAGTCCAATGAGCTGAAGAGTGTGGGCCATTTGGAAG  
CATGCCACGCCGCTTGAAGTCTTCCGTCCGGCCCTGGAGATTGACAGCTCCAAGTGTCCCTATGGA  
TTGAGTATGGCACCATGTCTATGCCTTGCACTATTGCCTCACGTCAATTGAAGCAGTGGAGAGGCGA  
GCTGCCCCCTGAGCTCGTGCAGCAGATGGAGGGCCGGCGCAGCATGTAGAGACAGCCAAGCACTGT  
TTCACATCAGCAGCCGCTGCGAGGGTGTGGTACGAGGAGGAGTGGCTCATCCACTACATGCTGGGCA  
AGGTGGCTGAGAAGCAGCAGCAGCCACCACCGTTTACTTGTGCTACTACAGGCAGGCTGGCCACTACCT  
GCACGAGGAGGCTGCCCGTACCACAAGAGATCCACTACCACAACCCACCTGAGCTGGCCATGGAGGCC  
CTGGAGGTGACTTTCGGCTCCATGCTTCCATCCTGAAGTCTGGGGAAGCCGATTCTGGGGTTGGTG  
CAGAGGTCTGGTCAACTTTATGAAGGAGGCTGCAGAAGGACCCTTTGCCAGGGGCGAGGAGAAGAACAC  
ACCCAAAGCTTCAAGAAAGGAGAAGGCCTGCCTGGTGGACGAGGACTCCCACTCTTCAAGTGGGACACTG  
CCGGGCCCCGGAGCCTCCCTCCCTCCTCTGGCCAGGTCTGACATCCCCACCTTACACAGCCACTC  
CGATTACACGATTACGTCAAATGTAAAAACCCACCAGCAGGCAACGCCGGACGCCAAGCCAGGA  
CAGCAGCCGTAGCACTCTCAGACTCTAGCTCAACGAGGACTTCTTTAATGAGCCACCAGCTTACTG  
GAAGGCTCCAGGAAATCCTACACAGAGAAGAGGCTGCCATTCTCAGTTCCTCAAGCAGGAGCGACGGTA  
AAGATCTTCAGGGGGCCACAGAAGAAAGAGGAAAAACGAGGAGTCAATTGGAGAGTACAGAAGGCTTCCG  
GGCTGCAGAGCAAGGTGTCCAGAAGCCTGCTGCAGAAACCCAGCCTCTGCTTGCATCCCTGGCAAGCCC  
TCAGCATCCACACCCACCCTGTGGGATGGGAAGAAGAGAGGGGACCTCCCAGGGGAGCCAGTGGCCTTCC  
CCCAGGGGCTGCCGGCTGGTGTGAGGAGCAGCGGAGTTTCTCACAGAGCAGTGCATCGCTCCTTCCG  
CCTGTGCCTGAGCCGCTTCCCCAGCACTATAAGAGTCTCTACCGTCTGGCCTTCTCTACACCTACAGC  
AAGACCCACCGAACCTCCAGTGGGCCCGCAGCTGTTGCTAGGCAGCAGTATCCCGTGGCAACAACCTGC  
AGCAGATGCCGGCACAGGGGCTTCTCTGCGAGAGGAACAAGACCAATTTCTTCAACGGCATCTGGCGGAT  
CCCCGTGACGAGATTGACCGGCCGGGAGCTTTGCCTGGCAGATGAACCGCTCCATCGTGTGCTGCTC  
AAGGTGTGGCCAGCTGCGGGACCACAGCACCCTGCTGAAGGTGTCTCCATGCTTACAGCGGACCCAG  
ACCAGGGCAAGAAGTATCTGCGAGATGCTGACCGCAGGTCTGGCGCAGCGGGCCTTATCCTCACTGT  
GAAGGTGCTCGAAGACACGCTGAGCGAGCTCGCAGAGGGGTGAGAACGCCAGGGGCCAAGGTCTGTGGC  
CTCCCCGAGCCAGGATGACCACCGATGTCTCACACAAGGCCAGTCTGAGGATGGCCAGGAGGGCTCC

```
CCCAGCCGAAGAAGCCCCCTCTGGCTGATGGCTCAGGGCCAGGGCCCGAGCCAGGAGGCAAAGTGGGCCT
CCTCAACCACCGGCTGTGGCCATGGATGCAGGAGACAGTGCAGACCAAAGCGGGGAGCGGAAGGATAAA
GAGAGCCACGGGCGAGGGCCACTGAGCCCATGGACACGAGTGGAGCCACTGTTTGCCACTCAGACTTGG
AGCGGACACCACCCTGCTGCCAGGTGCCCCGCAAGGGACCGGGGCCCCGAGAGCCGGCCACTGAGCT
GTCCTTGAGGAGCTGAGCATCAGTGCCCGGCAGCAGCCACCCCGCTACCCAGCCAGCCAGCCCCC
GCCCGGCCCCCGCCACCACCAGGGACCAGGGCAGGGGGCCACCCGGAGGAGCCGCTCTCCCGGCTCA
GCCGAAAGAGGAAGCTCCTGGAGGACACAGAGTCAGGCAAGACACTTCTGTTGGATGCCTACCGTGTGTG
GCAGCAGGGCCAGAAGGGTGTGGCCTATGACCTGGGCCGTGTGGAGAGGATCATGTCGGAGACCTACATG
CTCATCAAGCAGGTGGATGAGGAGGCTGCGCTGGAGCAGGCTGTGAAGTCTGCCAGGTCCATCTTGGGG
CTGCCGCCAGAGACAGGCTCGGGGGACACCCCACTCCAAAGCACCCCAAAGACAGCCGAGAGAA
CTTCTTTCTGTGACAGTGGTGCCACAGCCCCTGACCTGTGCCAGTGACTCTGTCCAGCGGCCAGT
GATGCTCACACCAAGCCTCGCCCTGCACTAGCTGCCGCCACAATTATTACACTGCCCTCCGTGAGCAT
CAGTTCCACCCTGGACCAGTCCAAGGACCCTGGGCCTCCCGGCCACACAGGCCTGAAGTACCCCCAG
CATGGCCTCTCTGGGCCAGAGGAGAAGAGCTGGCGAGAGTGGCAGAGGGCACCAGCTTCCCGCCTCAG
GAGCCACGGCACAGTCCGAGGTGAAGATGGCCCCACAAGTCCCGGCCAGAGCCACACTGCTGGCCGG
CAGAGGCTGCCCTGGGCACAGGCCTGAGCCACCTGCAGCCAGGAGGGAAACTGAGGCCTGAGCCGAG
AAGGGATGGGGAGGCTCAGGAGGCTGCGAGTGAGACTCAGCCCCTGAGCTCTCCCCAACAGCTGCCAGC
TCCAAGGCCCCAGCAGTGGGAGTGCCAGCCACCAGAGGGTCACCCAGGCAAGCCTGAGCCAGCCGGG
CTAAGTCCCGCCCCCTGCCAACATGCCAAAGCTGGTCATCCCCTCCCGCCGCCACCAAGTCCCCCTGA
GATCACCGTCACGCCACCCACCCCAACCCTGCTCTCCCCAAAGGCAGCATCTCGGAGGAGACCAAGCAG
AAGCTGAAGTCAGCCATCCTTTCTGCCAGTCTGCTGCCAACGTGAGGAAGGAGAGCCTATGCCAGCCAG
CCCTGGAGTCTTGAGACATCCAGCCAGGAGTCTCGCTGGAGAGCGAGACAGACGAGGACGACGACTA
CATGGACATT
```

ACGCGTACGCGGCCGCTCGAG – GFP Tag – GTTTAA

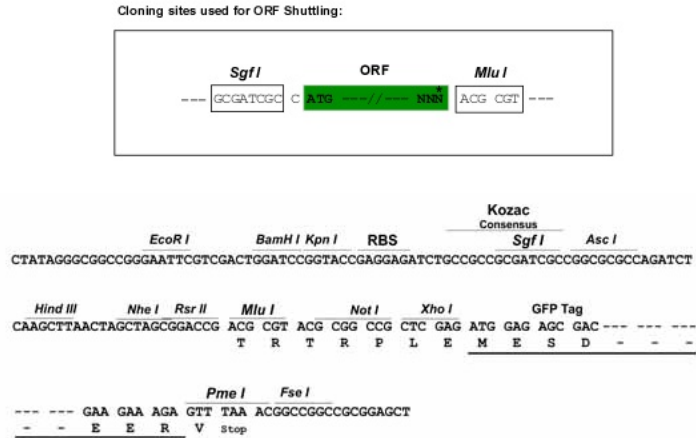
**Protein Sequence:** >RG211750 representing NM\_012295  
 Red=Cloning site Green=Tags(s)

MIRIAALNASSTIEDDHEGSFKSHKTQTKEAQEAEAFALYHKALDLQKHDRFEESAKAYHELLEASLLRE  
 AVSSGDEKEGLKHPGLILKYSTYKNLAQLAAQREDLETAMEFYLEAVMLDSTDVNLWYKIGHVALRLIRI  
 PLARHAFEELRCNPDHWPCLDNLITVL YTLSDYTTCLYFICKALEKDCRYSKGLVLKEIFEEQPCLRK  
 DSLRMFLKCDMSIHDVSVSAAETQAIVDEALGLRKKRQALIVREKEPDLKLVQPIPFPTWKCLGESLLAM  
 YNHLTTCEPPRPSLGRIDLSDYQDPSQPLESSMVVTPVNVIQPSTVSTNPVAVAVAEPPVSVYTSVATTSF  
 PLHSPGLLETGAPVGDISGGDKSKKGVKRKKISEESGETAKRRSARVRNTKCKKEEKVDFQELLMKFLPS  
 RLRKLDPEEEDDSFNNEYVQSEAKLESFSPSIGPQRLSFDSATFMESEKQDVHEFLEENLTNGGILELMMR  
 YLKAMGHKFLVRWPPGLAEVVLVSYHSWRRHSTSLPNPLLRDCSNKHDKMMLMSLSCMELQDQWLLTK  
 GRSSAVSPRNCAGMVNRFGRFPDGFTHCLGDLQLSFASSQRDLFEDGWLEFVVRYWYLKARFLALQGD  
 MEQALENYDICTEMLSSTAIQVEAGAERRDIVIRL PNLHNSVVSLEEIDKNLKSLEERCQSLEEIQRLY  
 EAGDYKAVVHLLRPTLCTSGFDRAKHLEFMTSIPERPAQLLLLQDSSLRLKDYRQCFECSVALNEAVQQ  
 MVNSGEEAAKEEWVATVTQLLMGIEQALSADSSGSILKVSSTTGLVRLTNNLIQVIDCSMAVQEEAKEP  
 HVSSVLPWIIILHRIIWQEEDTFHSLCHQQQLQNPAAEGMSETPMLPSSMLLNTAHEYLRGRSSWCCNSDG  
 ALLRFYVRVLQKELAASTSEDTHPYKEELETALQCFYCLYSFSPKSKARYLEEHSAAQQVDLIWEDALF  
 MFEYFKPKTLPEFDSYKTSTVSADLANLLKRIATIVPRTERPALSLDKVSAYIEGTSTEVPLPEGADPS  
 PPVVNELYYLLADYHFKNKEQSKAIKFYMHDIICPNRFD SWAGMALARASRIQDKLNSNELKSDGPIWK  
 HATPVLNCFRRALIDSSNLSLWIEYGTMSYALHSFASRLKQWRGELPELVQMEGRDRSMLETAKHC  
 FTSARCEGDGDEEELIHYMLGKVAEKQQQPPTVYLLHYRQAGHYLHEEAARYPKKIHYHNPPELAMEA  
 LEVYFRLHASILKLLGKPD SGVGAEVLVNFMKEAAEGPFARGEKNTPKASEKEKACLVEDSHSSAGTL  
 PGPASLPSSSGPGLTSPPYTATPIDHDYVKCKPHQQTATPDDRSQDSTAVALSDDSSTQDFNEPTSL  
 EGSRSYTEKRLPILSSQAGATGKDLQGATEERGNESLESTEGFRAAEQGVQKPAEAETPASACIPGKP  
 SASTPTLWDGKKRGDLPGEVAFVQGLPAGAEERQFLTEQCIASFRLCLSRFPQHYKSLYRLAFLYTYS  
 KTHRNQLWARDVLLGSSIPWQQLQHMPAQGLFCERNKTNFFNGIWRIPVDEIDRPGSFAWHMNRIVLLL  
 KVLAQLRDHSTLLKVSSMLQRTPDQGGKYL RDADRQVLAQRAFILTVKVLEDTLSELAEGSERPGPKVCG  
 LPGARMTDVS HKASPEDGQGLPQPKPPLADGSGPPEPGGKVGLLNHRPVAMDAGDSADQSGERKDK  
 ESPRAGPTEPMDTSEATVCHSDLERTPPLLGRPARDRGPESRPTLSLEELISARQQPTLTPAQAPAP  
 APAPATTTGTRAGGHPEEPLSRLSRKRKLEDETESGKTL LLDAYRVWQQGQGVAYDLGRVERIMSETYM  
 LIKQVDEEAALQAVKFCQVHLGAAARQASGDTPTTPKHPKDSRENFFPVTVVPTADPVPADSVQRPS  
 DAHTKPRPALAAATTIITCPPSASASTLDQSKDPGPPRPHRPEATPSMASLGPEGEELARVAEGTSFPPQ  
 EPRHSPQVKMAPTSSPAEPHCWPAEALGTGAEPTCSQEGKLRPEPRRDGEAQEAASETQPLSSPPTAAS  
 SKAPSSGSAQPPEGHPGKPEPSRAKSRPLNMPKLVIPSAATKFPPEITVTPPTLLSPKGSISEETKQ  
 KLSAILSAQSAANVRKESLCPALEVLETSSQESSLESETDEDDDDYMDI

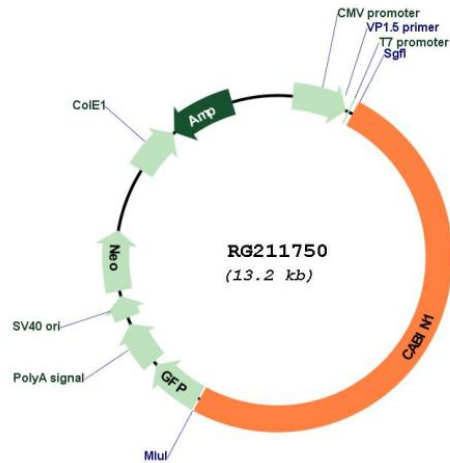
TRTRPLE - GFP Tag - V

**Restriction Sites:** Sgfl-MluI

Cloning Scheme:



Plasmid Map:



ACCN:

NM\_012295

ORF Size:

6660 bp

OTI Disclaimer:

The molecular sequence of this clone aligns with the gene accession number as a point of reference only. However, individual transcript sequences of the same gene can differ through naturally occurring variations (e.g. polymorphisms), each with its own valid existence. This clone is substantially in agreement with the reference, but a complete review of all prevailing variants is recommended prior to use. [More info](#)

OTI Annotation:

This clone was engineered to express the complete ORF with an expression tag. Expression varies depending on the nature of the gene.

Components:

The ORF clone is ion-exchange column purified and shipped in a 2D barcoded Matrix tube containing 10ug of transfection-ready, dried plasmid DNA (reconstitute with 100 ul of water).

**Reconstitution Method:**

1. Centrifuge at 5,000xg for 5min.
2. Carefully open the tube and add 100ul of sterile water to dissolve the DNA.
3. Close the tube and incubate for 10 minutes at room temperature.
4. Briefly vortex the tube and then do a quick spin (less than 5000xg) to concentrate the liquid at the bottom.
5. Store the suspended plasmid at -20°C. The DNA is stable for at least one year from date of shipping when stored at -20°C.

**RefSeq:** [NM\\_012295.2](#), [NP\\_036427.1](#)

**RefSeq Size:** 7222 bp

**RefSeq ORF:** 6663 bp

**Locus ID:** 23523

**UniProt ID:** [Q9Y6J0](#)

**Cytogenetics:** 22q11.23

**Domains:** TPR

**Protein Families:** Druggable Genome

**Gene Summary:** Calcineurin plays an important role in the T-cell receptor-mediated signal transduction pathway. The protein encoded by this gene binds specifically to the activated form of calcineurin and inhibits calcineurin-mediated signal transduction. The encoded protein is found in the nucleus and contains a leucine zipper domain as well as several PEST motifs, sequences which confer targeted degradation to those proteins which contain them. Alternative splicing results in multiple transcript variants encoding two different isoforms. [provided by RefSeq, Jan 2011]