

Product datasheet for **RG211728**

CYP11A1 (NM_001099773) Human Tagged ORF Clone

Product data:

Product Type: Expression Plasmids
Product Name: CYP11A1 (NM_001099773) Human Tagged ORF Clone
Tag: TurboGFP
Symbol: CYP11A1
Synonyms: CYP11A; CYPXIA1; P450SCC
Mammalian Cell Selection: Neomycin
Vector: pCMV6-AC-GFP (PS100010)
E. coli Selection: Ampicillin (100 ug/mL)
ORF Nucleotide Sequence: >RG211728 representing NM_001099773
 Red=Cloning site Blue=ORF Green=Tags(s)

TTTTGTAATACGACTCACTATAGGGCGGCCGGAATTCGTCGACTGGATCCGGTACCGAGGAGATCTGCC
 GCC**CGATCGCC**

ATGGCTCCAGAGGCCACCAAGAAGCTTTTGGCCCTGTTGGATGCAGTGTCTCGGGACTTCGTCAGTGTCC
 TGCACAGGCGCATCAAGAAGGCGGGCTCCGAAATTAAGTGGGGACATCAGTGTACCTGTTCCGCTT
 TGCCTTTGAGTCCATCACTAACGTCATTTTGGGAGCGCCAGGGGATGCTGGAGGAAGTAGTGAACCC
 GAGGCCAGCGATTCATTGATGCCATCTACCAGATGTTCCACACCAGCGTCCCATGCTCAACCTCCCC
 CAGACCTGTTCCGTCTGTTCCAGACCAAGACCTGGAAGGACCATGTGGCTGCATGGGACGTGATTTTCAG
 TAAAGCTGACATATACCCAGAAGCTTCTACTGGGAATTGAGACAGAAAGGAAGTGTTCACCACGATTAC
 CGTGGCATCCTCTACAGACTCCTGGGAGACAGCAAGATGTCTTCGAGGACATCAAGGCCAACGTACAG
 AGATGCTGGCAGGAGGGGTGGACACGACGTCCATGACCCTGCAGTGGCACTTGTATGAGATGGCAGCAA
 CCTGAAGGTGCAGGATATGCTGCGGGCAGAGGTCTTGGCTGCGCGGCACCCAGGCCAGGGAGACATGGCC
 ACGATGCTACAGCTGGTCCCCCTCTCAAAGCCAGCATCAAGGAGACACTAAGACTTCACCCCATCTCCG
 TGACCTGCAGAGATATCTTGAAATGACTTGGTCTTCGAGATTACATGATTCTGCCAAGACACTGGT
 GCAAGTGGCCATCTATGCTCTGGGCCGAGAGCCACCTTCTTCTCGACCCGAAAATTTTGACCAACC
 CGATGGCTGAGCAAAGACAAGAACATCACCTACTCCGGAATTTGGCTTTGGCTGGGGTGTGGCGCAGT
 GTCTGGGACGGCGGATCGCTGAGCTAGAGATGACCATCTTCTCATCAATATGCTGGAGAAGCTCAGAGT
 TGAAATCCAACACCTCAGCGATGTGGGCACCACATTCAACCTCATTCTGATGCCTGAAAAGCCCATCTCC
 TTCACCTTCTGGCCCTTAAACCAGGAAGCAACCCAGCAG

ACGGTACGCGGCCGCTCGAG - GFP Tag - GTTTAA



[View online »](#)

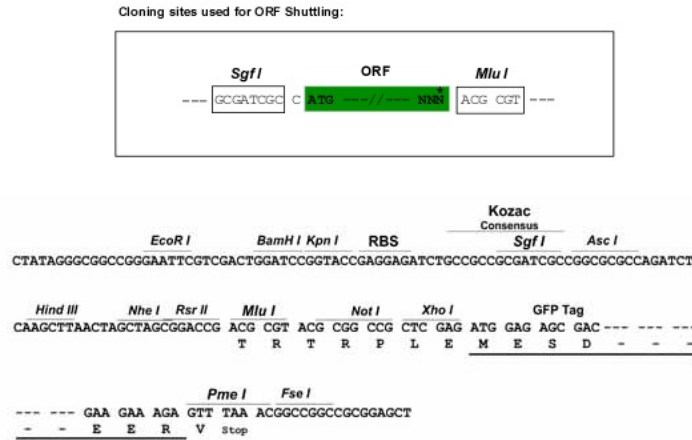
Protein Sequence: >RG211728 representing NM_001099773
 Red=Cloning site Green=Tags(s)

MAPEATKNFLPLLDVSRDFVSVLHRRRIKAGSGNYSGDISDDLFRFAFESITNVIFGERQGMLEEVVNP
 EAQRFIDAIYQMFHTSVPMLNLPDLFRLFRKTWKDHVAAWDVIFSKADIYTQNFYWELRQKGSVHHDY
 RGILYRLLGDSKMSFEDIKANVTEMLAGGVDTTSMTLQWHL YEMARNLKVQDMLRAEVL AARHQ AQGDMA
 TMLQLVPLLKASIKETLRLHPISVTLQRYLVNDLVLRDYMIPAKTLVQVAIYALGREPTFFFDPENFDPT
 RWLSKDKNITYFRNLGFGWVRQCLGRRIAELEMTIFLINMLENFRVEIQHLSDVGTTFNLI LMPEKPIS
 FTFWPFNQEATQQ

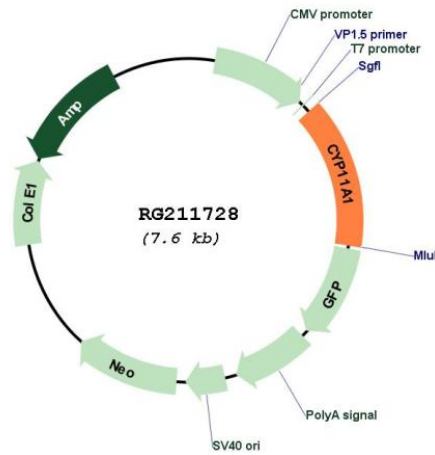
TRTRPLE - GFP Tag - V

Restriction Sites: SgfI-MluI

Cloning Scheme:



Plasmid Map:



ACCN: NM_001099773

ORF Size:	1089 bp
OTI Disclaimer:	The molecular sequence of this clone aligns with the gene accession number as a point of reference only. However, individual transcript sequences of the same gene can differ through naturally occurring variations (e.g. polymorphisms), each with its own valid existence. This clone is substantially in agreement with the reference, but a complete review of all prevailing variants is recommended prior to use. More info
OTI Annotation:	This clone was engineered to express the complete ORF with an expression tag. Expression varies depending on the nature of the gene.
Components:	The ORF clone is ion-exchange column purified and shipped in a 2D barcoded Matrix tube containing 10ug of transfection-ready, dried plasmid DNA (reconstitute with 100 ul of water).
Reconstitution Method:	<ol style="list-style-type: none">1. Centrifuge at 5,000xg for 5min.2. Carefully open the tube and add 100ul of sterile water to dissolve the DNA.3. Close the tube and incubate for 10 minutes at room temperature.4. Briefly vortex the tube and then do a quick spin (less than 5000xg) to concentrate the liquid at the bottom.5. Store the suspended plasmid at -20°C. The DNA is stable for at least one year from date of shipping when stored at -20°C.
RefSeq:	NM_001099773.2
RefSeq Size:	2010 bp
RefSeq ORF:	1092 bp
Locus ID:	1583
UniProt ID:	P05108
Cytogenetics:	15q24.1
Protein Families:	Druggable Genome, P450
Protein Pathways:	C21-Steroid hormone metabolism, Metabolic pathways
Gene Summary:	This gene encodes a member of the cytochrome P450 superfamily of enzymes. The cytochrome P450 proteins are monooxygenases which catalyze many reactions involved in drug metabolism and synthesis of cholesterol, steroids and other lipids. This protein localizes to the mitochondrial inner membrane and catalyzes the conversion of cholesterol to pregnenolone, the first and rate-limiting step in the synthesis of the steroid hormones. Two transcript variants encoding different isoforms have been found for this gene. The cellular location of the smaller isoform is unclear since it lacks the mitochondrial-targeting transit peptide. [provided by RefSeq, Jul 2008]