

Product datasheet for **RG211718**

DOK5 (NM_018431) Human Tagged ORF Clone

Product data:

Product Type:	Expression Plasmids
Product Name:	DOK5 (NM_018431) Human Tagged ORF Clone
Tag:	TurboGFP
Symbol:	DOK5
Synonyms:	C20orf180; IRS-6; IRS6
Mammalian Cell Selection:	Neomycin
Vector:	pCMV6-AC-GFP (PS100010)
E. coli Selection:	Ampicillin (100 ug/mL)
ORF Nucleotide Sequence:	>RG211718 representing NM_018431 Red=Cloning site Blue=ORF Green=Tags(s)

TTTTGTAATACGACTCACTATAGGGCGGCCGGAATTCGTCGACTGGATCCGGTACCGAGGAGATCTGCC
GCC**CGATCGCC**

ATGGCTTCCAATTTTAAATGACATAGTGAAGCAAGGGTACGTGAGGATCCGGAGCAGACGCCTCGGGATTT
ATCAGCGATGCTGGTTAGTATTCAAGAAAGCTTCAAGCAAAGGTCCAAAAAGACTGGAGAAATTTTCTGA
TGAACGTGCTGCATTTTCAGGTGTTATCATAAGGTTACAGAACTCAATAATGTGAAGAACGTAGCTCGA
TTGCCAAAAAGCACCAAGAAACATGCCATAGGGATTTATTTCAATGACGATACCTCAAGACTTTTGCTT
GCGAATCAGATCTTGAGGCTGATGAGTGGTCAAAGTACTCCAGATGGAGTGTGTAGGAACACGGATCAA
TGACATCAGCCTTGAGAGCCTGACTTACTGGCCACTGGGGTTGAGAGAGAACAGAGTGAGAGATTCAAT
GTGATTTTGATGCCATCTCCTAACTTAGATGTACATGGCGAATGTGCCTTGACAGATTACATATGAGTATA
TCTGTCTTTGGGACGTCCAGAATCCCAGAGTCAAACATCTCTTTGGCCGCTAAGCGCCCTGCGCGGGTA
TGGACGTGATACTACGTGGTTCACCTTTTGGAGCAGGGAGGATGTGTGAGACTGGTGAAGGGCTGTTTATC
TTTCAGACCCGAGACGGGGAGGCCATCTATCAGAAAGTCCACTCTGCTGCCTTGGCCATAGCCGAGCAGC
ACGAGCGCTTGTACAGAGTGTGAAAACTCGATGCTCCAGATGAAGATGAGTGAAGCGGGCCGCTCGCT
GAGCACCATGGTCCCCCTGCCTCGCAGCGCCTACTGGCAGCACATCACACGGCAGCACAGCAGCGGGACAG
CTCTACCGCTTGCAAGATGTTTCCAGCCCTCTGAAGCTTCATCGAACAGAGACTTTTCCAGCCTACAGAT
CTGAGCAC

ACGCGTACGCGGCCGCTCGAG - GFP Tag - GTTTAA



[View online »](#)

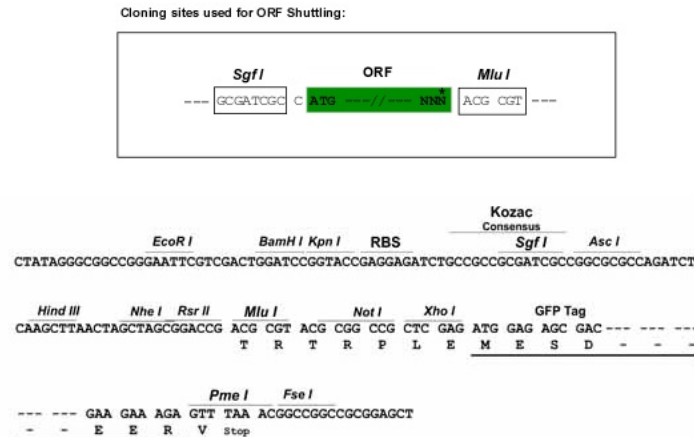
Protein Sequence: >RG211718 representing NM_018431
Red=Cloning site Green=Tags(s)

MASNFNDIVKQGYVIRSRRLGIYQRCWLVFKKASSKGPKRLEKFSDERAAYFRCYHKVTELNNVKNVAR
 LPKSTKKHAIGIYFNDDTSKTFACESDLEADWCKVLQMECVGTRINDISLGEPELLATGVEREQSERFN
 VYLMPSNLDVHGECALQITYEYICLDWDVQNPRVKLISWPLSALRRYGRDITWTFEAGRMCEGGLFI
 FQTRDGEAIYQKVHSAALIAEQHERLLQSVKNSMLQMKMSERAASLSTMVPLPR SAYWQHITRQHSTGQ
 LYRLQDVSSPLKLHRTETFPAYRSEH

TRTRPLE - GFP Tag - V

Restriction Sites: SgfI-MluI

Cloning Scheme:



ACCN: NM_018431

ORF Size: 918 bp

OTI Disclaimer: The molecular sequence of this clone aligns with the gene accession number as a point of reference only. However, individual transcript sequences of the same gene can differ through naturally occurring variations (e.g. polymorphisms), each with its own valid existence. This clone is substantially in agreement with the reference, but a complete review of all prevailing variants is recommended prior to use. [More info](#)

OTI Annotation: This clone was engineered to express the complete ORF with an expression tag. Expression varies depending on the nature of the gene.

Components: The ORF clone is ion-exchange column purified and shipped in a 2D barcoded Matrix tube containing 10ug of transfection-ready, dried plasmid DNA (reconstitute with 100 ul of water).

Reconstitution Method:

1. Centrifuge at 5,000xg for 5min.
2. Carefully open the tube and add 100ul of sterile water to dissolve the DNA.
3. Close the tube and incubate for 10 minutes at room temperature.
4. Briefly vortex the tube and then do a quick spin (less than 5000xg) to concentrate the liquid at the bottom.
5. Store the suspended plasmid at -20°C. The DNA is stable for at least one year from date of shipping when stored at -20°C.

RefSeq: [NM_018431.5](#)

RefSeq Size: 1833 bp

RefSeq ORF: 921 bp

Locus ID: 55816

UniProt ID: [Q9P104](#)

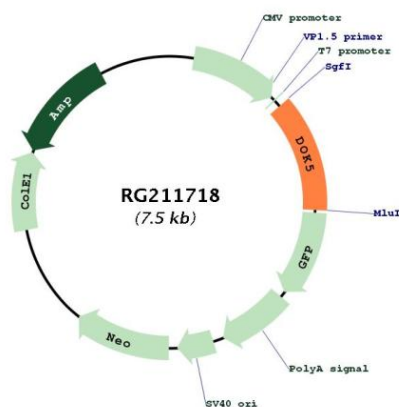
Cytogenetics: 20q13.2

Domains: PH, IRS

Protein Families: Druggable Genome

Gene Summary: The protein encoded by this gene is a member of the DOK family of membrane proteins, which are adapter proteins involved in signal transduction. The encoded protein interacts with phosphorylated receptor tyrosine kinases to mediate neurite outgrowth and activation of the MAP kinase pathway. Unlike other DOK family proteins, this protein does not interact with RASGAP. This protein is up-regulated in patients with systemic sclerosis and is associated with fibrosis induced by insulin-like growth factor binding protein 5. Alternative splicing of this gene results in multiple transcript variants. [provided by RefSeq, Jun 2014]

Product images:



Circular map for RG211718