

## Product datasheet for **RG211687**

### LILRB5 (NM\_006840) Human Tagged ORF Clone

#### Product data:

Product Type:	Expression Plasmids
Product Name:	LILRB5 (NM_006840) Human Tagged ORF Clone
Tag:	TurboGFP
Symbol:	LILRB5
Synonyms:	CD85C; LIR-8; LIR8
Mammalian Cell Selection:	Neomycin
Vector:	pCMV6-AC-GFP (PS100010)
E. coli Selection:	Ampicillin (100 ug/mL)



[View online »](#)

**ORF Nucleotide Sequence:**

>RG211687 representing NM\_006840  
 Red=Cloning site Blue=ORF Green=Tags(s)

TTTTGTAATACGACTCACTATAGGGCGGCCGGAATTCGTCGACTGGATCCGGTACCGAGGAGATCTGCC  
 GCC**CGGATCGCC**

ATGACCCTCACCTCTCAGTCTGATTTGCTCGGGCTGAGTGTGGGCCCCAGGACCTGCGTGCAGGCAG  
 GCACCCTCCCAACCACCTCTGGGCTGAGCCAGCCTCTGTAGCTCGGGGAAGCCCGTGACCCT  
 CTGGTGTGAGGGCCCTGGAGACTGAGGAGTACCGTCTGGATAAGGAGGGACTCCCATGGGCCCGAAG  
 AGACAGAACCCACTGGAGCCTGGAGCCAAGGCCAAGTTCCACATCCATCCACGGTGTATGACAGTGCAG  
 GGCGATACCGCTGCTACTATGAGACCCCTGCAGGCTGGTGCAGAGCCAGTGACCCCTGGAGCTGGTGGC  
 GACAGGCGTGTCTAGGAAGCCCTCCCTCTGATCCCGCAGGGCTCTGTCTGGCCCGGGAGGCAGCCTG  
 ACCCTGCAGTGTCTGCTGGTGTGGCTATGACATATTCGTTCTGTACAAGGAGGGGAACATGACCTCG  
 TCCAGGGCTCTGGCCAGCAGCCCAGGCTGGGCTCTCCAGGCCAACTTACCCTGGGCCCTGTGAGCCG  
 CTCCACGGGGCCAGTACAGATGCTACGGTGCACACAACCTCTCCCTAGGTGGTGGCCCGCAGCGAC  
 CCCTGGACATCCTGATCGCAGGACTGATCCCTGACATACCCGCCCTCTCGGTGCAGCCGGCCCAAGG  
 TGGCTCAGGAGAGAACGTGACCCTGCTGTGTCAGTCATGGCATCAGATAGACACTTTCTTTTTGACAA  
 GGAGGGGGCAGCCATCCCCCGTGTGTCTAAAGTCAAAGTACCAGTCTTATAGACACCAGGCTGAATTC  
 TCCATGAGTCTGTGACCTCAGCCAGGGTGAACCTACCGATGCTACAGCGCAATCAGGTCCTACCCT  
 ACCTGTGTCCAGCCCTAGTTACCCCAAGGAGCTCGTGGTCTCAGGACCTCTGGGGATCCAGCCTCTC  
 ACCTACAGGCTCCACCCACACCTGGCCCTGAGGACCAGCCCTCACCCACGGGGTTGGATCCCCAG  
 AGTGGTCTGGGAAGGCACCTGGGGTTGTGACTGGGTCTCAGTGGCCTTCGTCCTGCTGCTGTTCTCC  
 TCCTCTTCTCCTCCGACATCGGCATCAGAGCAAACACAGGACATCGGCCATTTCTACCGCTCTGC  
 AGGGGCTGCGGGCCAGAGCCCAAGGACCAGGGCCTGCAGAAGAGGGCCAGCCAGTTGCTGACATCCAG  
 GAGGAAATTCATGCTGCCGTGAAGGACACACAGCCCAAGGACGGGGTGGAGATGGACTCGGCAGA  
 GCCCACACGATGAAGACCCAGGACAGTACGATGCGGAGGTGAAACACTCCAGACCTAGGAGAGAAAT  
 GGCTCTCCTCCCTCCCACTGTCTGGGAATTCCTGGACAAAAGGACAGACAGGCAGAGAGGACAGA  
 CAGATGGACTGAGAGAGTCTTCTCTCCAGGCCCCAGGCTCCCAACCCACCACGTTCTCTCC  
 CTCTACTCTCCCGCTGCAGGCTGCTGCATCTGAAGCCCCCAGGATG

**ACGCGTACGCGGCCGCTCGAG** – GFP Tag – GTTTAA

**Protein Sequence:**

>RG211687 representing NM\_006840  
 Red=Cloning site Green=Tags(s)

MTLTLVLIICLGLSVGPRTCVQAGTLPKPTLWAEPASVIARGKPVTLWCQPLETEEYRLDKEGLPWARK  
 RQNPLEPGAKAKFHIPSTVYDSAGRYRCYYETPAGWSEPSDPLELVATGVSARKPSLLIPQGSVVARGGSL  
 TLQCRSGVGYDIFVLYKEGEHDLVQSGQPPQAGLSQANFTLGPVSRSHGGQYRCYGAHNLSPRWSAPSD  
 PLDILIAGLIPDIPALSVQPGPKVASGENVTLLCQSWHQIDTFLLTKEGAHPPLCLKSKYQSYRQAEF  
 SMSPVTSAQGGTYRCYSAIRSYPYLLSSPSYPQELVVSQPSGDPSSLPTGPTPGPEDQPLTPTGLDPQ  
 SGLGRHLGVVTGVSFAVLLFLLLFLLLRHRHQSKHRTSAHFYRPAGAAGPEPKDQGLQKRASPVADIQ  
 EEILNAAVKDTQPKDGVEMDTRQSPHDEDPQAVTYAEVKHSRPRREMASPPSPLSGEFLDTKDRQAEEDR  
 QMDTERVLSPPGQASPPPPRSFPLTLPRCLLHLKPPRM

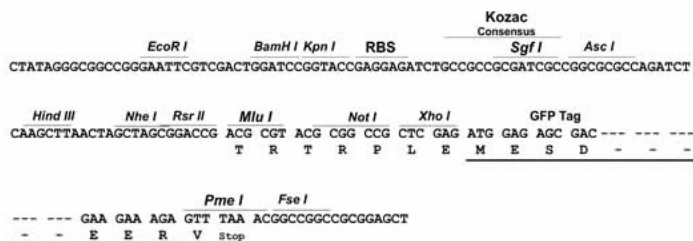
**TRTRPLE** – GFP Tag – V

**Restriction Sites:**

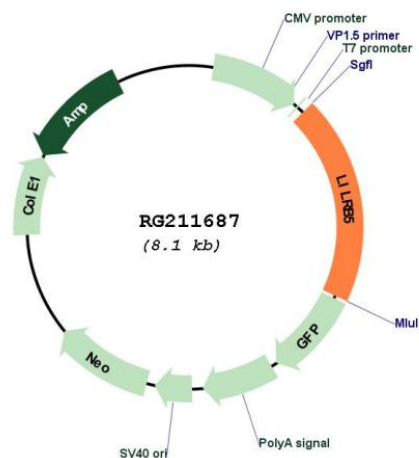
Sgfl-MluI

## Cloning Scheme:

Cloning sites used for ORF Shutting:



## Plasmid Map:



<b>ACCN:</b>	NM_006840
<b>ORF Size:</b>	1770 bp
<b>OTI Disclaimer:</b>	The molecular sequence of this clone aligns with the gene accession number as a point of reference only. However, individual transcript sequences of the same gene can differ through naturally occurring variations (e.g. polymorphisms), each with its own valid existence. This clone is substantially in agreement with the reference, but a complete review of all prevailing variants is recommended prior to use. <a href="#">More info</a>
<b>OTI Annotation:</b>	This clone was engineered to express the complete ORF with an expression tag. Expression varies depending on the nature of the gene.
<b>Components:</b>	The ORF clone is ion-exchange column purified and shipped in a 2D barcoded Matrix tube containing 10ug of transfection-ready, dried plasmid DNA (reconstitute with 100 ul of water).
<b>Reconstitution Method:</b>	<ol style="list-style-type: none"><li>1. Centrifuge at 5,000xg for 5min.</li><li>2. Carefully open the tube and add 100ul of sterile water to dissolve the DNA.</li><li>3. Close the tube and incubate for 10 minutes at room temperature.</li><li>4. Briefly vortex the tube and then do a quick spin (less than 5000xg) to concentrate the liquid at the bottom.</li><li>5. Store the suspended plasmid at -20°C. The DNA is stable for at least one year from date of shipping when stored at -20°C.</li></ol>
<b>RefSeq:</b>	<a href="#">NM_006840.2</a> , <a href="#">NP_006831.1</a>
<b>RefSeq Size:</b>	2114 bp
<b>RefSeq ORF:</b>	1773 bp
<b>Locus ID:</b>	10990
<b>UniProt ID:</b>	<a href="#">O75023</a>
<b>Cytogenetics:</b>	19q13.42
<b>Domains:</b>	ig
<b>Protein Families:</b>	Transmembrane
<b>Gene Summary:</b>	This gene is a member of the leukocyte immunoglobulin-like receptor (LIR) family, which is found in a gene cluster at chromosomal region 19q13.4. The encoded protein belongs to the subfamily B class of LIR receptors which contain two or four extracellular immunoglobulin domains, a transmembrane domain, and two to four cytoplasmic immunoreceptor tyrosine-based inhibitory motifs (ITIMs). Several other LIR subfamily B receptors are expressed on immune cells where they bind to MHC class I molecules on antigen-presenting cells and inhibit stimulation of an immune response. Multiple transcript variants encoding different isoforms have been found for this gene. [provided by RefSeq, Jul 2008]