

## Product datasheet for **RG211682**

### UTF1 (NM\_003577) Human Tagged ORF Clone

#### Product data:

Product Type: Expression Plasmids  
 Product Name: UTF1 (NM\_003577) Human Tagged ORF Clone  
 Tag: TurboGFP  
 Symbol: UTF1  
 Mammalian Cell Selection: Neomycin  
 Vector: pCMV6-AC-GFP (PS100010)  
 E. coli Selection: Ampicillin (100 ug/mL)  
 ORF Nucleotide Sequence: >RG211682 representing NM\_003577  
 Red=Cloning site Blue=ORF Green=Tags(s)

TTTTGTAATACGACTCACTATAGGGCGGCCGGGAATTCGTCGACTGGATCCGGTACCGAGGAGATCTGCC  
 GCC**CGATCGCC**

ATGCTGCTCCGGCCCCGAGGCCGCCCGCTCGCGCCCCCGCGCCGCCCTCGCCCGCCAGCCCCGACC  
 CCGAGCCGCGGACACCCGGAGACGCCCGGGGACCCCGCCCGGAGGCCCGCCTCGCCAGCGCGCTGGG  
 GGAACTCGGGTTGCCGGTGTCCCGGGCTCGGCGCAGCGCACGCCCTGGAGCGCCCGGAGACGGAGCTG  
 CTGCTGGGGACGCTGCTGCAACCGGCCGTGTGGCGCGCTGCTCCTGGACCGCCCGCCAGGCCCTGCCCA  
 CCTACCGCGCGTGTGGCCCGCTGGCCAGCAGCAGTGCGCCGACCCCGCGCAGTGCCCGCCGCC  
 CTACAAGTTCCTTAAAGACAAGTTTCGCGAGGCGCACGGCCAGCCGCCCGGGCCCTTCGACGAGCAGATC  
 CGGAAGCTCATGGGGCTGCTGGGCGACAACGGGCGCAAACGGCCCTCGCCCGCGCTCCCGGGGTCCGGGC  
 GCCCCAGCGCGCCCGCCCGGTCGCCAACGCGCACGCGCCGGCTCCAGCGAACAGACGCCACCCC  
 GCTGCCACCGCCCGCGACCGCGACGCGGACCCACCTGGACGCTCCGCTTCAGCCCGTCCCGCCGAA  
 TCTGGGGACGCTCCCGCCCGGCTCCCGCCAGCTCCCGCCCGACCGCCCTCGCCACCTGCATCC  
 CCGAGGACCGCGCCCGTCCCGGGCCCGGGTCCCGCCGCCACCCCGGCCCGAAGACCCCGACTC  
 GCCGCCCGCCCGCCCGAGGACTGCGCGCCCCCTCCGGCCCGCCCGCTCGCTGAACACCGCCCTGCTG  
 CAGACCCTGGGGACCTGGGCGACATCGCGAACATCCTGGGCCCGCTGCGCGACCAGCTGCTGACCTTGA  
 ACCAGCACGTGGAGCAGCTGCGCGGCCCTTCGACCAGACAGTGTCCCTGGCCGTGGGCTTCATTCTGGG  
 CAGCGCGCCCGCCGAGCGAGGGTCTCAGGGACCCGTGCCAG

**ACGCGT**ACGCGGCCGCTCGAG - GFP Tag - GTTTAA



[View online »](#)

**Protein Sequence:** >RG211682 representing NM\_003577  
Red=Cloning site Green=Tags(s)

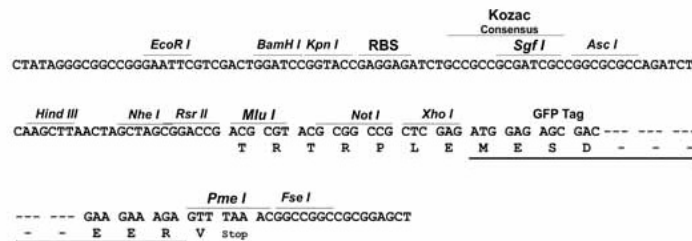
MLLRPRRPPPLAPPAPPSPASPDPEPRTPGDAPGTTPRRRPASPSALGELGLPVSPGSAQRTPWASARETEL  
 LLGTLLQPAVWRALLLDRRQALPTYRRVSAALAQQVRRTPAQCRRRYKFLKDKFREAHGQPPGPFDEQI  
 RKLMLGLDNGRKRPRRRSPGSRPQRARRPVPNAHAPAPSEPDATEPLPTARDRDADPTWTLRFSPSPPK  
 SADASPAPGSPAPAPTALATCIPEDRAPVRGPGSPPPPPAREDPSPGPRPEDCAPPAAPPPLNTALL  
 QTLGHLGDIANILGPLRDQLLTLNQHVEQLRGAFDQTVSLAVGFILGSAEAERGVLDRDPCQ

TRTRPLE - GFP Tag - V

**Restriction Sites:** SgfI-MluI

**Cloning Scheme:**

Cloning sites used for ORF Shutting:



**ACCN:** NM\_003577

**ORF Size:** 1023 bp

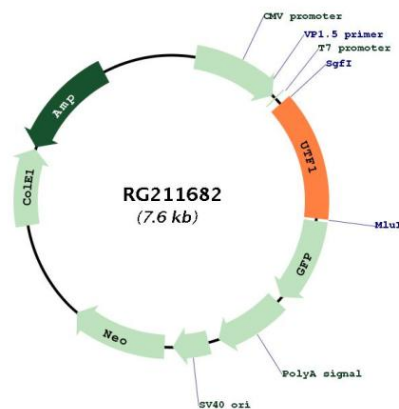
**OTI Disclaimer:** Due to the inherent nature of this plasmid, standard methods to replicate additional amounts of DNA in E. coli are highly likely to result in mutations and/or rearrangements. Therefore, OriGene does not guarantee the capability to replicate this plasmid DNA. Additional amounts of DNA can be purchased from OriGene with batch-specific, full-sequence verification at a reduced cost. Please contact our customer care team at [custsupport@origene.com](mailto:custsupport@origene.com) or by calling 301.340.3188 option 3 for pricing and delivery.

The molecular sequence of this clone aligns with the gene accession number as a point of reference only. However, individual transcript sequences of the same gene can differ through naturally occurring variations (e.g. polymorphisms), each with its own valid existence. This clone is substantially in agreement with the reference, but a complete review of all prevailing variants is recommended prior to use. [More info](#)

**OTI Annotation:** This clone was engineered to express the complete ORF with an expression tag. Expression varies depending on the nature of the gene.

<b>Components:</b>	The ORF clone is ion-exchange column purified and shipped in a 2D barcoded Matrix tube containing 10ug of transfection-ready, dried plasmid DNA (reconstitute with 100 ul of water).
<b>Reconstitution Method:</b>	<ol style="list-style-type: none"> <li>1. Centrifuge at 5,000xg for 5min.</li> <li>2. Carefully open the tube and add 100ul of sterile water to dissolve the DNA.</li> <li>3. Close the tube and incubate for 10 minutes at room temperature.</li> <li>4. Briefly vortex the tube and then do a quick spin (less than 5000xg) to concentrate the liquid at the bottom.</li> <li>5. Store the suspended plasmid at -20°C. The DNA is stable for at least one year from date of shipping when stored at -20°C.</li> </ol>
<b>RefSeq:</b>	<a href="#">NM_003577.3</a>
<b>RefSeq Size:</b>	1157 bp
<b>RefSeq ORF:</b>	1026 bp
<b>Locus ID:</b>	8433
<b>UniProt ID:</b>	<a href="#">Q5T230</a>
<b>Cytogenetics:</b>	10q26.3
<b>Protein Families:</b>	Embryonic stem cells, ES Cell Differentiation/IPS, Induced pluripotent stem cells, Transcription Factors
<b>Gene Summary:</b>	The protein encoded by this gene is a leucine zipper-containing transcriptional coactivator that may link the upstream activator ATF2 with the basal transcription complex. The encoded protein is closely associated with chromatin and is required for the proper differentiation of embryonic carcinoma and embryonic stem cells. Found nearly exclusively in pluripotent cells, this protein can also serve as a transcriptional repressor. [provided by RefSeq, Nov 2015]

### Product images:



Circular map for RG211682