

Product datasheet for **RG211676**

PKC mu (PRKD1) (NM_002742) Human Tagged ORF Clone

Product data:

Product Type:	Expression Plasmids
Product Name:	PKC mu (PRKD1) (NM_002742) Human Tagged ORF Clone
Tag:	TurboGFP
Symbol:	PKC mu
Synonyms:	CHDED; PKC-MU; PKCM; PKD; PRKCM
Mammalian Cell Selection:	Neomycin
Vector:	pCMV6-AC-GFP (PS100010)
E. coli Selection:	Ampicillin (100 ug/mL)



[View online »](#)

ORF Nucleotide
Sequence:

>RG211676 representing NM_002742
 Red=Cloning site Blue=ORF Green=Tags(s)

TTTTGTAATACGACTCACTATAGGGCGGCCGGGAATTCGTCGACTGGATCCGGTACCGAGGAGATCTGCC
 GCCGCGATCGCC

ATGAGCGCCCCTCCGGTCTGCGGCCGCCAGTCCGCTGCTGCCGTGGCGGCGGCAGCTGCCGACGCG
 CCGCCGCACTGGTCCCAGGGTCCGGGCCGGGCCCGCCGCGCTTCTTGGCTCCTGTGCGGGCCCCGGTCGG
 GGGCATCTCGTTCATCTGCAGATCGGCCCTGAGCCGTGAGCCGGTGTGCTGCTGCAAGACTCGTCCGGG
 GACTACAGCCTGGCGCACGTCCGCGAGATGGCTTGTCCATTGTCGACCAGAAGTCCCTGAATGTGGTT
 TCTACGGAATGTATGATAAGATCCTGCTTTTTCGCCATGACCCTACCTCTGAAAACATCCTTCAGCTGGT
 GAAAGCGGCCAGTGATATCCAGGAAGGCGATCTTATTGAAGTGGTCTTGTGAGCTTCCGCCACCTTTGAA
 GACTTTCAGATTCGTCGCCACGCTCTTTTGTTCATTACACAGAGCTCCAGCTTCTGTGATCACTGTG
 GAGAAATGCTGTGGGGGCTGGTACGTCAAGGTCTTAAATGTGAAGGTGTGGTCTGAATTACCATAAGAG
 ATGTGCATTTAAAATACCAACAATTGCAGCGGTGTGAGGCGGAGAAGGCTCTCAAACGTTTCCCTCACT
 GGGGTACGACCATCCGCACATCATCTGCTGAACCTCTCTACAAGTGCCCTGATGAGCCCTTCTGCAAA
 AATCACCATCAGAGTCGTTTATTGGTTCGAGAGAAGAGGTCAAATTCATCATACATTGGACGACCAAT
 TCACCTTGACAAGATTTTGATGTCTAAAGTTAAAGTGCCGCACACATTTGTATCCACTCCTACACCCGG
 CCCACAGTGTGCCAGTACTGCAAGAAGCTTCTGAAGGGGCTTTTCAGGCAGGGCTTGCAGTGCAAGATT
 GCAGATCAACTGCCATAAAAGTGTGCACCGAAAAGTACCAACAACCTGCCTTGGCGAAGTGACCATTAA
 TGGAGATTTGCTTAGCCCTGGGGCAGAGTCTGATGTGGTTCATGGAAGAAGGGAGTGATGACAATGATAGT
 GAAAGGAACAGTGGGCTCATGGATGATATGGAAGAAGCAATGGTCCAAGATGCAGAGATGGCAATGGCAG
 AGTCCCAGAACGACAGTGGCGAGATGCAAGATCCAGACCCAGACCAGGAGACGCCAACCAACCATCAG
 TCCATCAACAAGCAACAATATCCCACTCATGAGGGTAGTGCAGTCTGTCAAACACACGAAGAGGAAAAGC
 AGCACAGTCATGAAAGAAGGATGGATGGTCCACTACACCAGCAAGGACACGCTGCGGAAAACGGCACTATT
 GGAGATTGGATAGCAAATGTATTACCCTCTTTCAGAATGACACAGGAAGCAGGACTACAAGGAAATTC
 TTTATCTGAAATTTTGTCTCTGGAACAGTAAAAACTTCAGCTTTAATTCCTAATGGGGCAATCCTCAT
 TGTTTTGAAATCACTACGGCAAATGTAGTGTATTATGTGGGAGAAAATGTGGTCAATCCTTCCAGCCCAT
 CACCAAATAACAGTGTCTCACCAGTGGCGTTGGTGCAGATGTGGCCAGGATGTGGGAGATAGCCATCCA
 GCATGCCCTTATGCCCGTCAATCCCAAGGGCTCCTCCGTGGGTACAGGAACCAACTGCACAGAGATATC
 TCTGTGAGTATTTAGTATCAAATGCCAGATTCAAGAAAATGTGGACATCAGCACAGTATATCAGATTT
 TTCTGATGAAGTACTGGTTCTGGACAGTTTGAATTTTATGGAGGAAAACATCGTAAAACAGGAAG
 AGATGTAGCTATTAATAATCATTGACAAATTACGATTTCCAACAAAACAAGAAAGCCAGCTTCGTAATGAG
 GTTGCAATTCTACAGAACCTTATCACCCTGGTGTGTAATTTGGAGTGTATGTTTGAGACGCCTGAAA
 GAGTGTGTTGTTATGGAAAACTCCATGGAGACATGCTGGAATGATCTTGTCAAGTAAAAGGGCAG
 GTTGCCAGAGCACATAACGAAGTTTTAATTACTCAGATACTCGTGGCTTTCGCGCACCTTCATTTTAAA
 AATATCGTTCAGTGTGACCTCAAACCAGAAAATGTGTTGCTAGCCTCAGCTGATCCTTTTCTCAGGTGA
 AACTTTGTGATTTTGGTTTTGCCCGGATCATCGGAGAGAAGTCTTCCGGAGGTCAGTGGTGGGTACCCC
 CGCTTACCTGGCTCCTGAGGTCCTAAGGAACAAGGGCTACAATCGCTCTCTAGACATGGGTCTGTTGGG
 GTCATCATCTATGTAAGCCTAAGCGGCACATTCCTTTAATGAAGATGAAGACATACACGACCAATTC
 AGAATGCAGCTTTCATGTATCCACCAAATCCCTGGAAGGAAATATCTCATGAAGCCATTGATCTTATCAA
 CAATTTGCTGCAAGTAAAATGAGAAAGCGCTACAGTGTGGATAAGACCTTGAGCCACCCTTGGCTACAG
 GACTATCAGACCTGGTTAGATTTGCGAGAGCTGGAATGCAAAAATCGGGGAGCGCTACATACCCCATGAAA
 GTGATGACCTGAGGTGGGAGAAGTATGCAGGCGAGCAGGGGCTGCAGTACCCACACACCTGATCAATCC
 AAGTGCTAGCCACAGTGACACTCCTGAGACTGAAGAAACAGAAAATGAAAGCCCTCGGTGAGCGTGCAGC
 ATCCTC

ACGCGTACGCGGCCGCTCGAG - GFP Tag - GTTTAA

Protein Sequence: >RG211676 representing NM_002742
 Red=Cloning site Green=Tags(s)

```

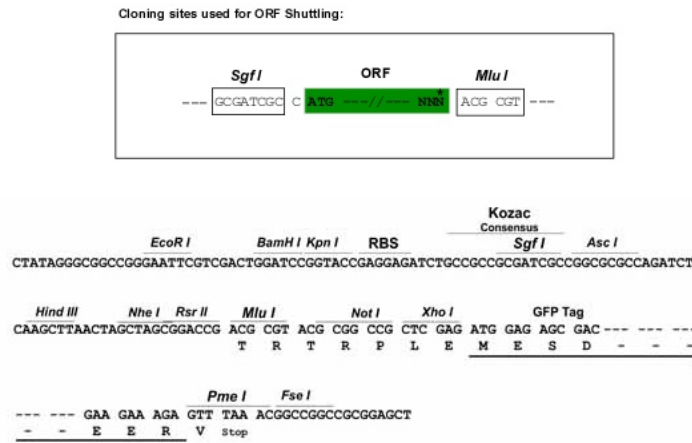
MSAPPVLRPPSPLLPVAAAAAAAAAALVPGSGPGPAPFLAPVAAPVGGISFHLQIGLSREPVLQLQDSSG
DYSLAHVREMACSIVDQKFPECGFYGMYDKILLFRHDPTSENLQLVKAASDIQEGDLIEVVLASATFE
DFQIRPHALFVHSYRAPAFCDHCGEMLWGLVRQGLKCEGCLNYHKRCFAKIPNNCSGVRRRRLSNVSLT
GVSTIRTSAAELSTSAPDEPLLQKSPSESFIGREKRSNSQSYIGRPIHLDKILMSKVKVPHTFVIHSYTR
PTVCQYCKKLLKGLFRQGLQCKDCRFNCHKRCAPKVPNNCLGEVTINGDLLSPGAESDVVMEEGSDNDNS
ERNSGLMDDMEEAMVQDAEMAMAECQNDSGEMQDPDPDHEDANRTISPSTSNNIPLMRVQSVKHTKRKS
STVMKEGWMVHYTSKDTLRKRHYWRLDSKCITLQNDTGSRYYEIPLSEILSLEPVKTSALIPNGANPH
CFEITTANVVVVYGENVVNPSSPSPNNSVLTSGVGADVARMWEIAIQHALMPVIPKGSSVGTGTLNHRDI
SVSISVSNQCIQENVDISTVYQIFPDEVLGSGQFGIVYGGKHKRKTGRDVAIKIIDKLRFPPTKQESQLRNE
VAILQNLHHPGVNLECMFETPERVVFVMEKLGDMLEMILSSEKGRLEPHITKFLITQILVALRHLHFK
NIVHCDLKPENVLLASADFPQVKLCDFGFARIIGEKSFRRSVVGTTPAYLAPEVLRNKGYNRSLDMWSVG
VIIVVSLSGTFFPNEDEDIHDQIQNAAFMYPPNPWKEISHEAIDLINLLQVKMRKRYSDKTLSPWLG
DYQTLWDLRELECKIGERYITHESDDLWEKYAGEQGLQYPTHLINPSASHSDTPETEEMKALGERV
IL
    
```

TRTRPLE - GFP Tag - V

Restriction Sites:

SgfI-MluI

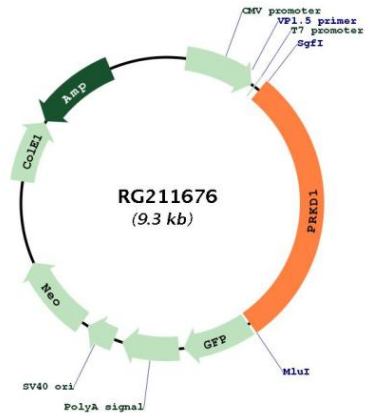
Cloning Scheme:



ACCN: NM_002742

ORF Size:	2736 bp
OTI Disclaimer:	The molecular sequence of this clone aligns with the gene accession number as a point of reference only. However, individual transcript sequences of the same gene can differ through naturally occurring variations (e.g. polymorphisms), each with its own valid existence. This clone is substantially in agreement with the reference, but a complete review of all prevailing variants is recommended prior to use. More info
OTI Annotation:	This clone was engineered to express the complete ORF with an expression tag. Expression varies depending on the nature of the gene.
Components:	The ORF clone is ion-exchange column purified and shipped in a 2D barcoded Matrix tube containing 10ug of transfection-ready, dried plasmid DNA (reconstitute with 100 ul of water).
Reconstitution Method:	<ol style="list-style-type: none">1. Centrifuge at 5,000xg for 5min.2. Carefully open the tube and add 100ul of sterile water to dissolve the DNA.3. Close the tube and incubate for 10 minutes at room temperature.4. Briefly vortex the tube and then do a quick spin (less than 5000xg) to concentrate the liquid at the bottom.5. Store the suspended plasmid at -20°C. The DNA is stable for at least one year from date of shipping when stored at -20°C.
RefSeq:	NM_002742.1 , NP_002733.1
RefSeq Size:	3742 bp
RefSeq ORF:	2739 bp
Locus ID:	5587
UniProt ID:	Q15139
Cytogenetics:	14q12
Domains:	pkinase, TyrKc, PH, DAG_PE-bind, S_TKc
Protein Families:	Druggable Genome, Protein Kinase
Gene Summary:	The protein encoded by this gene is a serine/threonine protein kinase involved in many cellular processes, including Golgi body membrane integrity and transport, cell migration and differentiation, MAPK8/JNK1 and Ras pathway signaling, MAPK1/3 (ERK1/2) pathway signaling, cell survival, and regulation of cell shape and adhesion. [provided by RefSeq, Jan 2017]

Product images:



Circular map for RG211676