

Product datasheet for **RG211632**

DISC1 (NM_001012958) Human Tagged ORF Clone

Product data:

Product Type:	Expression Plasmids
Product Name:	DISC1 (NM_001012958) Human Tagged ORF Clone
Tag:	TurboGFP
Symbol:	DISC1
Synonyms:	C1orf136; SCZD9
Mammalian Cell Selection:	Neomycin
Vector:	pCMV6-AC-GFP (PS100010)
E. coli Selection:	Ampicillin (100 ug/mL)
ORF Nucleotide Sequence:	>RG211632 representing NM_001012958 Red=Cloning site Blue=ORF Green=Tags(s)

TTTTGTAATACGACTCACTATAGGGCGGCCGGGAATTCGTCGACTGGATCCGGTACCGAGGAGATCTGCC
GCC**CGATCGCC**

ATGCCAGGCGGGGTCTCAGGGCGCCCCAGCCGCCCGCGGGCGGGCGGTGAGCCACCGCAGGCA
GCCGGATTGCTTACCACCTGCAGCGTCTTTTCGGAGGCGGGCTGGCACGGAGGCCGGGTACATGAG
AAGCTCGACAGGGCTGGGATCGGGTTCCTTTCCCAGCAGTGGGCACACTGTTCCGGTCCCAGGAGGG
GTGTCTGGCGAGGAGTCCCACTCGGAGTCCAGGGCCAGACAGTGTGGCCTTGACTCGAGAGGCCTCT
TGGTCCGAGCCCTGTTTCCAAGAGTGCAGCAGCCCTACTGTGACCTCTGTGAGAGGAACCTCGGCGCA
CTTTGGGATTCAGCTCAGAGGTGGCACCAGATTGCCTGACAGGCTTAGCTGGCCGTGTGGCCTGGGAGT
GCTGGGTGGCAGCAAGAGTTTGCAGCCATGGATAGTTCTGAGACCCTGGACGCCAGCTGGGAGGCAGCCT
GCAGCGATGGAGCAAGGCGTGTCCGGGCAGCAGGCTCTCTGCCATCAGCAGAGTTGAGTAGCAACAGCTG
CAGCCCTGGCTGTGGCCCTGAGGTCCCCCAACCCTCTGGCTCTCACAGTGCCTTTACCTCAAGCTTT
AGCTTTATTCGGCTCTCGCTTGGCTCTGCCGGGAACGTGGAGAAGCAGAAGGCTGCCACCATCCAGAG
AGGCTGAGTCCCATTGCCAGAGCCCCAGGAGATGGGAGCCAAAGCTGCCAGCTTGGACGGGCTCACGA
GGACCCGCGATGTCTCTCGGCCCTTCAGTCTCTTGGCTACACGGGTCTCTGCAGACTTGGCCCAGGCC
GCAAGGAACAGCTCCAGGCCAGAGCGTGACATGCATTCTTTACCAGACATGGACCCTGGCTCCTCCAGTT
CTCTGGATCCCTCACTGGCTGGCTGTGGTGGTGTGGGAGCAGCGGCTCAGGGGATGCCACTCTTGGGA
CACCTGCTCAGGAAATGGGAGCCAGTGTGCGGGACTGCTGCTGAGAAACCGGAGGCAGATGGAGCTG
GAACCAATTGCTTTGGATCCACCATGGAAGCCTCGACATCCTGAACCAAACCTCTAT

ACGGTACGCGGCCGCTCGAG - GFP Tag - GTTTAA



[View online »](#)

Protein Sequence: >RG211632 representing NM_001012958
 Red=Cloning site Green=Tags(s)

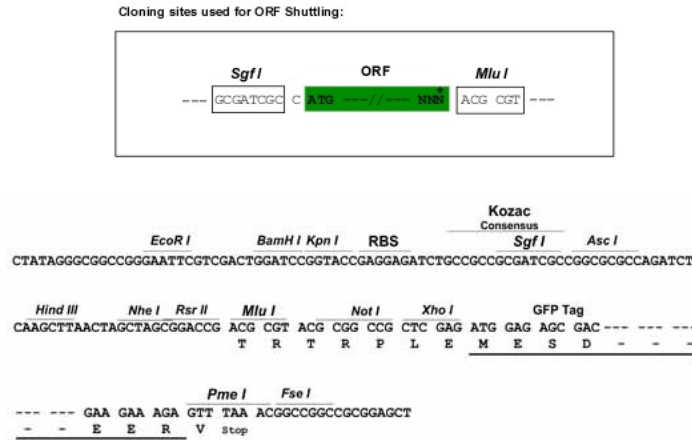
MPGGGPQGAPAAAGGGGVSHRAGSRDCLPPAACFRRRRLARRPGYMRSSSTGPGIGFLSPAVGTLFRFPGG
 VSGEESHSESRARQCGLDSRGLLVRSVPVSKSAAAPT VTSVRGTSAHFGIQLRGGTRL PDRLSWPCGPGS
 AGWQQEFAAMDSSSETLDASWEAACSDGARRVRAAGSLPSAELSSNSCSPGCGPEVPPTPPGSHSAFTSSF
 SFIRLSLGSAGERGEAEGCPPSREAE SHCQSPQEMGAKAASLDGPHEDPRCLSRPF SLLATRVSADLAQA
 ARNSSRPERDMHSLPMDPGSSSLDPSLAGCGGDGSSGSGDAHSWDTLLRKWEPVLRDCLLRNRRQMEL
 EPIALDPPWKPRHPEPNYSY

TRTRPLE - GFP Tag - V

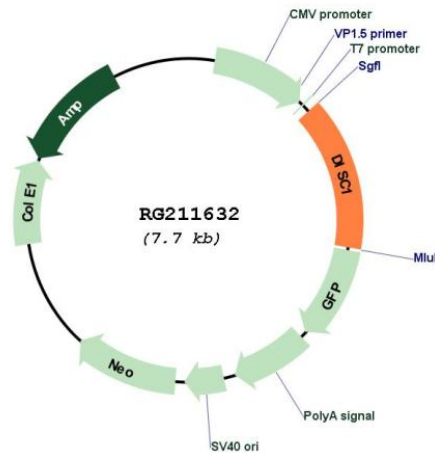
Restriction Sites:

SgfI-MluI

Cloning Scheme:



Plasmid Map:



ACCN:

NM_001012958

ORF Size:	1107 bp
OTI Disclaimer:	The molecular sequence of this clone aligns with the gene accession number as a point of reference only. However, individual transcript sequences of the same gene can differ through naturally occurring variations (e.g. polymorphisms), each with its own valid existence. This clone is substantially in agreement with the reference, but a complete review of all prevailing variants is recommended prior to use. More info
OTI Annotation:	This clone was engineered to express the complete ORF with an expression tag. Expression varies depending on the nature of the gene.
Components:	The ORF clone is ion-exchange column purified and shipped in a 2D barcoded Matrix tube containing 10ug of transfection-ready, dried plasmid DNA (reconstitute with 100 ul of water).
Reconstitution Method:	<ol style="list-style-type: none"> 1. Centrifuge at 5,000xg for 5min. 2. Carefully open the tube and add 100ul of sterile water to dissolve the DNA. 3. Close the tube and incubate for 10 minutes at room temperature. 4. Briefly vortex the tube and then do a quick spin (less than 5000xg) to concentrate the liquid at the bottom. 5. Store the suspended plasmid at -20°C. The DNA is stable for at least one year from date of shipping when stored at -20°C.
RefSeq:	NM_001012958.2
RefSeq Size:	2636 bp
RefSeq ORF:	1110 bp
Locus ID:	27185
UniProt ID:	Q9NRI5
Cytogenetics:	1q42.2
Gene Summary:	This gene encodes a protein with multiple coiled coil motifs which is located in the nucleus, cytoplasm and mitochondria. The protein is involved in neurite outgrowth and cortical development through its interaction with other proteins. This gene is disrupted in a t(1;11) (q42.1;q14.3) translocation which segregates with schizophrenia and related psychiatric disorders in a large Scottish family. Alternate transcriptional splice variants, encoding different isoforms, have been characterized. [provided by RefSeq, Jul 2008]