

Product datasheet for **RG211611**

MYRIP (NM_015460) Human Tagged ORF Clone

Product data:

Product Type:	Expression Plasmids
Product Name:	MYRIP (NM_015460) Human Tagged ORF Clone
Tag:	TurboGFP
Symbol:	MYRIP
Synonyms:	SLAC2-C; SLAC2C
Mammalian Cell Selection:	Neomycin
Vector:	pCMV6-AC-GFP (PS100010)
E. coli Selection:	Ampicillin (100 ug/mL)



[View online »](#)

ORF Nucleotide Sequence:

>RG211611 representing NM_015460
 Red=Cloning site Blue=ORF Green=Tags(s)

TTTTGTAATACGACTCACTATAGGGCGGCCGGAATTCGTCGACTGGATCCGGTACCGAGGAGATCTGCC
 GCC**CGCATCGCC**

ATGGGGAGGAAGCTGGACCTGTCTGGTTTGACTGATGATGAAACAGAGCATGTTCTTCAGGTGGTTCAAA
 GAGACTTCAATCTTCGCAAAAAAGAAGAAGAACGACTAAGTGAGCTGAAGCAGAAGCTGGATGAGGAAGG
 CAGCAAGTGCAGCATCCTCTCGAAGCACCAGCAGTTTGTGGAGCACTGCTGCATGCGCTGCTGCTCGCCC
 TTCACCTTCTCGTCAACACCAAGCGCCAGTGTGGAGATTGCAAATTCATGTCTGCAAGAGCTGCTGCT
 CCTACCAGAAGCAGAAAAGGCTGGGTCTGCTGCGTCTGCCAGCAAGCGAGGCTTCTGAGGGCCCAATC
 TCTGGAATGGTTCTACAATAATGTGAAGAGCCGCTTCAAGCGCTTGGCAGTGCCAAGGTTCTGAAGAAC
 CTGTACAGGAAGCACCAGTGGAGAGTGGCGCTGCTTCGACATTCTAGGAGGAAGCCTTTTGGAGTCAA
 ACCTGGAGAATGAAGGAAGCATTCTGGCAGTGATTCAACATTTATAGGCAGTCAGAAGGACATAGTGT
 GATGGACACCTTGGCTGTGGCCCTACGGGTGGCTGAAGAGGCCATTGAGGAAGCAATTTCCAAGCAGAG
 GCATATGGGGACAGCCTGGACAAGCAAAATGAGGCCAGTTACCTGCGGGACCACAAGGAGGAGCTAACTG
 AGGAACTGGCCACGACAATCCTGCAAGAAGATTATACGAAAACAGAAGAGCAAAAGTGAGCAGCAAGTGGA
 AGAAGAGCCAGGATGGCCACATCCCAGAGTTGCAGCACAAAGGTGGCAGATGAGGGGACCTCAGCATCC
 CCTGGAGGCTACCGTGTCCCGTGCCTCTGGAGGTCCCAGTCTGCCTTCTCAATCACTGGAGAAGAAG
 CCCTGAAGACCCCTCCAGTGGAGACTCCATCGAGGCAGCAAGGGACCAAGGCCAACACCCGAGAGCAGA
 GTCTGCTCTGCCAGCTGGAAGAGTGTGGACAGGCTGGATGAAACAAACCTGGCCCCAGTTTTGCAGAGC
 CCCGACGGAACTGGGTGGCCCTGAAGGATGGCGCTCCACCCCAACCCGACTACTGGCCAAACCTAAGA
 GCGGGACGTTTTAGGCCCTGGAGTGGCCTCCAGTGTGGCATCTGCCTACGATGAGATGGCTCCGATAG
 CGAGGAAGACTTTGACTGGAGTGAAGCCTTGAGCAAGCTGTGTCCAGGTCCCGGCCCTGCCCAGGAAC
 CCCAGCCTCAGCCACACAGGCCAGAGCTCTGACCAAGGCCCATAGCTGCCTCCCCATCCTCTGCAC
 TCTCCCCAACCTGAGGCCATGTGCTCTGACTCGGAGACCTCCTCCGAGGCTCTTCCCGAGAAGTTGG
 GCACCAGGCCAGACTGTCTGGTGCAGAGGAAGGCCCCAGGAACCTGCAGCTGAGAAGATGCGCTTG
 CATGGAGAGCTGGACGTGAACCTCAACCCCAAGTTGGCCAGCAGGGAGACCTCGGACAGCAGCGAGCCGG
 AGGAGGCCCCACACCACAGACCAGCGGGCCAGGAGGTGGAGAAGAGCCCGATTGGGCTCAGAAGAGCC
 AAGCAAAGAACCATCTTCCCGCAGCCAGCTCCGGATCTAGACACACATCAGGTGTCGGATGATTTA
 TCAGAGACAGACATCAGCAATGAGGCTCCGGATCCCAGACTCTCACAGACACCACAGAGGAGAAACGGA
 GAAACAGGCTGTACGAGTTAGCAATGAAAATGAGTGAAAAGGAGACTTCTCAGGGGAGGATCAGGAGTC
 TGAGCCCAAGACAGAATCTGAGAACCAGAAGGAAAGTCTGTCTCTGAAGACAACAGCCAGAGTGTCCAG
 GAAGAGCTGAAGAAGAAGTTTTCTGCTGTTTCTCTCTGCAACATCTCCACAGAAGTCTGAAAGTATCA
 ATGCCACAGAGGAGTTGATAGCAGGATCTACAGGGCCCTGGGAGTCCCCACAAGTCCCTCCTGACAGACA
 GAAGGGGATGTTTCTCGTGGGACAGACCAAGTGAAGTGGATGAGCAGCTGACTTCCCTGGAAGAAAAT
 GTATACCTGGCAGCAGGCACTGTGTATGGACTGGAGACCCAGTACTGAGCTAGAAGATGCCGCCCGCT
 GCATCCACAGCGCACTGATGAGACCACTGGCGGATCTGGAGGACCAGGTGGCCACGGCTGCAGCCCA
 AGTCCACCATGCTGAACCTCAGATTTTCAAGATTTGAGAGCCGGATTTTCAAGCCTGACCATTGAGGATTA
 AACATAGCACCATGTGTGCGCTTCAACAAGAAGACGGGATCAGAAGCAAAGGACCCAGGTACAACCATAG
 ATACATCAAGGCAGCAAAGGAGGAAACTGCCTGCTCCACCGGTGAAAGCTGAAAAAATTGAGACATCTTC
 AGTGACTACCATTAACATTTAACCACAACCTTATTCTCAAGGCTCCTCAACAAACAGGACTAAGGAA
 AGGAAAGGCACCACCAAGGATTTGATGGAGCCTGCTCTGGAGTCAGCTGTGATGTAC

ACGCGTACGCGGCCGCTCGAG - GFP Tag - GTTTAA

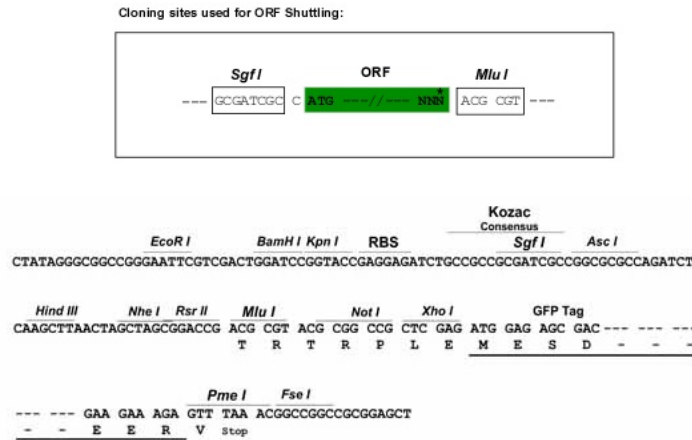
Protein Sequence: >RG211611 representing NM_015460
 Red=Cloning site Green=Tags(s)

```
MGRKLDL SGLT DDETEHVLQVVQRDFNLRKKEEERLSELKQKLDEEGSKCSILSKHQQFVEHCCMRCCSP
FTFLVNTKRQCGDCKFNVCKSCCSYQKHEKAWCCVCQARLLRAQSLEWFYNNVKSRFKRFGSAKVLKN
LYRKHRL ESGACFDILGGSLFESNLENEGSI SGSDSTFYRQSEGHVMDTLAVALRVAEEAIEEAI SKAE
AYGDSL DKQNEASYLRDHKEELTEELATTILQKIIRKQKSKSEQVEEPEGWPHQPQSCSTKVADEGTSAS
PGGYRAPAALWRSQSAFSITGEEALKTPPVETPSRQPRDQGHPRAESALPSWKSVDRLDETNLAPVLQS
PDGNWVALKDGAPPTRLLAKPKSGTFQALEVASSVASAYDEMGSDSEEDFDWSEALSKLCPRSRALPRN
PQPQPTQAQSSDQGPIAASPSSALSPNPEAMCSDSETSSAGSSREVGHQARLSWLQRKAPRNPAAEKMRL
HGELDVNFNPQLASRETS DSSEPEEAPHTTDRRARRRRARLGSEEPSKEPSSPSAQLRDL DTHQVSDDL
SETDISNEARDPQTLTDTTEEKRRNRLYELAMKMSEKETSSGEDQESEPKTESENQKESL SSEDNSQSVQ
EELKKKFSAVSLCNISTEVLKVINATEELIAGSTGPWESPQVPPDRQKGMFPRGTDQVRLDEQLTSLEEN
VYLAAGTVYGLETQLTELEDAARCIHSGTDETHLADLEDQVATAAAQVHHAELQISDI ESRI SALT IAGL
NIAPCVRFTRRRDQKQRTQVQTIDTSRQQRRKLPAPPVKAEKIETSSVTTIKTFNHNFI LQGSSTNRTKE
RKGTTKDLMEPALESAMVY
```

TRTRPLE - GFP Tag - V

Restriction Sites: Sgfl-MluI

Cloning Scheme:



ACCN: NM_015460

ORF Size: 2577 bp

OTI Disclaimer: The molecular sequence of this clone aligns with the gene accession number as a point of reference only. However, individual transcript sequences of the same gene can differ through naturally occurring variations (e.g. polymorphisms), each with its own valid existence. This clone is substantially in agreement with the reference, but a complete review of all prevailing variants is recommended prior to use. [More info](#)

OTI Annotation: This clone was engineered to express the complete ORF with an expression tag. Expression varies depending on the nature of the gene.

Components: The ORF clone is ion-exchange column purified and shipped in a 2D barcoded Matrix tube containing 10ug of transfection-ready, dried plasmid DNA (reconstitute with 100 ul of water).

Reconstitution Method:

1. Centrifuge at 5,000xg for 5min.
2. Carefully open the tube and add 100ul of sterile water to dissolve the DNA.
3. Close the tube and incubate for 10 minutes at room temperature.
4. Briefly vortex the tube and then do a quick spin (less than 5000xg) to concentrate the liquid at the bottom.
5. Store the suspended plasmid at -20°C. The DNA is stable for at least one year from date of shipping when stored at -20°C.

RefSeq: [NM_015460.2](#), [NP_056275.2](#)

RefSeq Size: 4884 bp

RefSeq ORF: 2580 bp

Locus ID: 25924

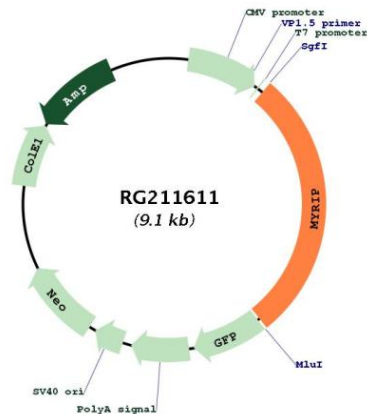
UniProt ID: [Q8NFW9](#)

Cytogenetics: 3p22.1

Domains: MOBP

Gene Summary: Rab effector protein involved in melanosome transport. Serves as link between melanosome-bound RAB27A and the motor proteins MYO5A and MYO7A. May link RAB27A-containing vesicles to actin filaments. Functions as a protein kinase A-anchoring protein (AKAP). May act as a scaffolding protein that links PKA to components of the exocytosis machinery, thus facilitating exocytosis, including insulin release (By similarity).[UniProtKB/Swiss-Prot Function]

Product images:



Circular map for RG211611